

PROVIDER MANUAL SUPPLEMENT

THIRD-PARTY LIABILITY

TABLE OF CONTENTS

INTRODUCTION.....	1
HEALTH INSURANCE RECORDS.....	1
ACCESS TO CARE	1
Health Insurance Premium Payment Project.....	2
Eligibility Verification.....	2
REPORTING TPL INFORMATION TO MEDICAID	2
Health Insurance Information Referral Forms.....	3
COORDINATION OF BENEFITS	3
COST AVOIDANCE VS. PAY & CHASE	3
Resources Secondary to Medicaid	4
COPAYMENTS AND TPL	4
DENIALS AND EOBs.....	5
POLICY TYPES	5
TIMELY FILING REQUIREMENTS	5
REASONABLE EFFORT	6
Reasonable Effort and Insurance Companies	6
Reasonable Effort and Beneficiaries	7
Reasonable Effort Documentation Form.....	7
REPORTING TPL INFORMATION ON CLAIMS	8
Carrier Codes	8
Policy Numbers	9
PHARMACY CLAIMS	9
NURSING FACILITY CLAIMS	9
PROFESSIONAL, INSTITUTIONAL, AND DENTAL CLAIMS.....	10
Professional Paper Claims	11
Institutional Paper Claims.....	12
Dental Paper Claims.....	12
Web-Submitted Claims.....	13

PROVIDER MANUAL SUPPLEMENT

THIRD-PARTY LIABILITY

TABLE OF CONTENTS

REJECTED CLAIMS	13
Insurance Edits.....	13
CLAIM ADJUSTMENTS AND REFUNDS	14
RECOVERY	14
Retro Medicare	15
Retro Health and Pay & Chase.....	15
CONCLUSION	16
TPL RESOURCES.....	17
SAMPLE FORMS	19

THIRD-PARTY LIABILITY SUPPLEMENT

INTRODUCTION

“Third-party liability” (TPL) refers to the responsibility of parties other than Medicaid to pay for health insurance costs. Medicaid is always the payer of last resort, which means that Medicaid will not pay a claim for which someone else may be responsible until the party liable before Medicaid has been billed. For the most part, this means providers are responsible for billing third parties before billing Medicaid.

Third parties can include:

- Private health insurance
- Medicare
- Employment-related health insurance
- Medical support from non-custodial parents
- Long-term care insurance
- Other federal programs
- Court judgments or settlements from a liability insurer
- State workers’ compensation
- First party probate-estate recoveries

Private health insurers and Medicare are the most common types of third party that providers are required to bill. For information on casualty cases and estate recovery, see Section 1 of your provider manual.

HEALTH INSURANCE RECORDS

Medicaid Insurance Verification Services (MIVS), Medicaid’s TPL contractor, researches third-party insurance information. Sources of information include providers, eligibility offices, long-term care workers, private insurers, other government agencies, and beneficiaries themselves.

It can take up to 25 days for a new policy record to be added to a beneficiary’s eligibility file and five days for corrections and updates of an existing record. New policy information and updates are added to the Medicaid Management Information System (MMIS) every working day.

ACCESS TO CARE

As a provider, your role in the TPL process begins as soon as you agree to treat a Medicaid-eligible patient. You should ask every patient and/or the patient’s responsible party about other insurance coverage.

According to 42 CFR 447.20(b), **you cannot refuse to treat a Medicaid patient simply because he or she has other health insurance.** You and the patient should work together to decide whether you will consider the individual a Medicaid patient or a private-pay patient. If you accept the individual as a Medicaid patient, you are obligated to follow Medicaid’s third-party liability guidelines and other policies. Remember, you agree to treat a patient as a Medicaid

THIRD-PARTY LIABILITY SUPPLEMENT

patient for an entire spell of illness; you cannot change a beneficiary's status in the midst of a course of treatment.

When you first accept a Medicaid beneficiary, and at every service encounter thereafter, you will check to see whether the patient is eligible for Medicaid. At the same time, you will check for any other insurers you may need to bill. You should also perform a Medicaid eligibility check again when entering a claim, as eligibility and TPL information are constantly being updated.

South Carolina Healthy Connections (Medicaid) does not require you to obtain copies of other insurance cards from the beneficiary. You can obtain from South Carolina Healthy Connections (Medicaid) all the information you need to file with another insurer or to code TPL information on a Medicaid claim, including policy numbers, policy types, and contact information for the insurer, as long as Medicaid has that information on file.

Health Insurance Premium Payment Project

The Health Insurance Premium Payment (HIPP) project allows SCDHHS to pay private health insurance premiums for Medicaid beneficiaries who may be at risk of losing the private insurance coverage. SCDHHS will pay such premiums if the payment is deemed cost effective; see Section 1 of your provider manual for more information on qualifying situations. Maintaining good communication with your patients will help you identify candidates for referral to the HIPP program.

Eligibility Verification

- **Medicaid Card:** Possession of a Medicaid card means only that a beneficiary was eligible for Medicaid when the card was issued. You must use other eligibility resources for up-to-date eligibility and TPL information.
- **Point-of-Sale Devices and Eligibility Verification Vendors:** Check with your vendor to see how TPL information is reported.
- **Web Tool:** The Eligibility Verification function of the South Carolina Healthy Connections (Medicaid) Web-based Claims Submission Tool provides information about third-party coverage. See the Web Tool User Guide for instructions on checking eligibility.

REPORTING TPL INFORMATION TO MEDICAID

Providers are an important source of information from beneficiaries about third-party insurers. You can report this information to Medicaid in two ways: enter the information on claims submitted to Medicaid, or submit Health Insurance Information Referral Forms to Medicaid. When primary health insurance information appears on a claim form, the insurance information is passed to MIVS electronically for verification. This referral process is conducted weekly and contributes to timely additions and updates to the policy file.

THIRD-PARTY LIABILITY SUPPLEMENT

Health Insurance Information Referral Forms

The SCDHHS Health Insurance Information Referral Form is used to document third-party insurance coverage, policy changes, beneficiary coverage changes, carrier changes, and policy lapse information. You should fill out this form when you discover third-party coverage information that Medicaid does not know about, or when you have insurance documentation that indicates the TPL health insurance record needs an update.

A copy of the form is included in the Forms section of your provider manual, and samples appear at the end of this supplement. Send or fax the completed forms to:

South Carolina Healthy Connections
PO Box 101110
Columbia, SC 29211-9804
Fax: (803) 252-0870

COORDINATION OF BENEFITS

Health insurers adhere to “coordination of benefits” provisions to avoid duplicating payments. The health plan or payer obligated to pay a claim first is called the “primary” payer, the next is termed “secondary,” and the third is called “tertiary.” Together, the payers coordinate payments for services up to 100% of the covered charges at a rate consistent with the benefits.

Medicaid does not participate in coordination of benefits in the same way as other insurers. Medicaid is never primary, and it will only make payments up to the Medicaid allowable. However, you should understand how other companies coordinate payments.

COST AVOIDANCE VS. PAY & CHASE

South Carolina Healthy Connections (Medicaid) is required by the federal government to reject claims for which another party might be liable; this policy is known as “cost avoidance.” Providers must report primary payments and denials to Medicaid to avoid rejected claims. The majority of services covered by Medicaid are subject to cost avoidance.

For certain services, Medicaid does not cost-avoid claims and will pursue recovery under a policy known as “Pay & Chase.” Medicaid remains the payer of last resort in all cases; however, under Pay & Chase it temporarily behaves like a primary payer.

Services that fall under Pay & Chase are:

- Preventive pediatric services
- Dental EPSDT services
- Maternal health services
- Title IV – Child Support Enforcement insurance records
- Certain Department of Health and Environmental Control (DHEC) services under Title V

While providers of such services are encouraged to file with any liable third party before Medicaid, if they choose not to do so, SCDHHS will pay the claims and bill liable third parties directly through the Benefit Recovery program. More information on recovery appears later in

THIRD-PARTY LIABILITY SUPPLEMENT

this supplement. If you choose to bill both a third party and Medicaid, you must enter the TPL filing information on your Medicaid claim as outlined in this supplement – rendering Pay & Chase-eligible services does not exempt you from the requirement to correctly code for TPL.

Resources Secondary to Medicaid

Certain programs funded only by the state of South Carolina (*i.e.*, without matching federal funds) should be billed secondary to Medicaid. The TPL claim processing subsystem does not reject claims for resources that may pay after Medicaid. These resources are:

- BabyNet
- Best Chance Network
- Black Lung
- Commission for the Blind
- Community Health
- Crime Victims Compensation Fund
- CRS (Children's Rehabilitative Services)
- Department of Corrections
- DHEC Cancer
- DHEC Family Planning (DHEC Maternal Child Health)
- DHEC Heart
- DHEC Hemophilia
- DHEC Migrant Health
- DHEC Sickle Cell
- DHEC TB
- Indian Health
- Other Indigent (hospital charity)
- Other Sponsor
- Ryan White Program
- State Aid Cancer Program
- Vaccine Injury Compensation
- Veterans Administration
- Vocational Rehabilitation Services

COPAYMENTS AND TPL

For certain services, Medicaid beneficiaries must make a Medicaid copayment. SCDHHS deducts this amount from what Medicaid pays the provider. Copayments are described in detail in Section 3 of your provider manual (if they apply to the services you provide).

Remember, as a Medicaid provider you have agreed to accept Medicaid's payment as payment in full. You can never balance bill a beneficiary receiving Medicaid-covered services for anything other than the Medicaid copayment. (You may, however, bill a beneficiary for services that Medicaid does not cover.)

When a beneficiary has Medicare or private insurance, he or she is still responsible for the Medicaid copayment. However, if the sum of the copayment and the Medicare/third-party payment would exceed the Medicaid-allowed amount, you must adjust or eliminate the copayment. In other words, though you may accept a primary insurance payment higher than what Medicaid would pay, the beneficiary's copayment cannot contribute to the excess revenue.

Medicaid beneficiaries with private insurance are **not** charged the copayment amount of the primary plan(s). When you accept a patient as a Medicaid patient, all Medicaid rules, including the Medicaid copayment rules, apply to that individual. These rules are federal law; they protect the Medicaid beneficiary by limiting his or her liability for payment for medical services.

THIRD-PARTY LIABILITY SUPPLEMENT

Medicaid determines payment in full and the patient's liability. Therefore, when you file a secondary claim with Medicaid, you can only apply the Medicaid copayment and cannot require the primary plan copayment as you would for a private pay patient.

DENIALS AND EOBs

When you bill a primary health insurer, you should obtain either a payment or a denial. You should also receive an Explanation of Benefits (EOB) that explains how the payment was calculated and any reasons for non-payment. Once you have received a reply from all potentially liable parties, if there are still charges that are not paid in full that might be covered by Medicaid, you may then bill Medicaid. This process is known as sequential billing.

Note that you must receive a *valid* denial before billing Medicaid. A request for more information or corrected information does not count as a valid denial.

POLICY TYPES

Each private policy listed in a patient's insurance record has an entry for "policy type," the most common of which is Health No Restrictions (HN). Another policy type you may encounter is HI, Health Indemnity; such policies pay per diem for hospital stays, surgeries, anesthesia, etc. HS, Health Supplemental, refers to policies that cover Medicare coinsurance and deductibles. Other policy types include Accident (HA) and Cancer (HC).

The policy type HN may be applied to a pharmacy carve-out, a mental health claim administrator, or a dental policy. The policy type does not provide specific information about the types of services covered, so you may have to take extra steps to determine whether to bill a particular carrier:

1. Ask the beneficiary. He or she should be able to tell you what kind of policy it is.
2. Look at the name of the carrier in the full list of carrier codes. The name may help you figure out the type of coverage (*e.g.*, ABC Dental Insurers).
3. Call SCDHHS Provider Service Center (PSC). Providers can also submit an online inquiry at <http://scdhhs.gov/contact-us> and a provider support representative will respond to you directly. He or she can look up more details of the plan in the TPL policy file.

TIMELY FILING REQUIREMENTS

Providers must file claims with Medicaid within a year of the date of service. If a claim is rejected, you must file a new claim within that year, and Void/Replacement adjustments must be made within that year as well – all activity related to the claim must occur within a year of the date of service in order for you to be paid.

Because of this timely filing requirement, you should bill third parties as soon as possible after service delivery. SCDHHS recommends that you file a claim with the primary insurer within 30 days of the date of service.

THIRD-PARTY LIABILITY SUPPLEMENT

Regardless of how long the third party takes to reply, providers must still meet Medicaid's timeliness requirements. Delays by other insurers are not a sufficient excuse for timeliness extensions.

Timely Filing	
Medicaid claims	One year
Medicare-primary claims to Medicaid	Two years or within six months from Medicare adjudication
Primary health insurance	30 days recommended

Late claim filing to the primary insurer and gaps in activity related to obtaining payment from a primary carrier are not reasonable practices. SCDHHS will not consider payment if a claim is not successfully adjudicated by the MMIS within the time frames above.

REASONABLE EFFORT

Providers occasionally encounter difficulties in obtaining documentation and payment from third parties and beneficiaries. For example, the third-party insurer may refuse to send a written denial or explanation of benefits, or a beneficiary may be missing or uncooperative. It is your responsibility as a provider to seek a solution to such problems.

“Reasonable effort” consists of taking logical, timely steps at each stage of the billing process. Such steps may include submitting new claims, making follow-up phone calls, and sending additional requested information. Many resources are available to help you pursue third-party payments. The PSC can work with you to explore these options.

Reasonable Effort and Insurance Companies

Below is a suggested process for filing to insurance companies. A flowchart based on this process can be found at the end of this supplement.

A. Send a claim to the insurance company.

If after **thirty days** you have received no response:

B. Call the company's customer service department to determine the status of the claim.

- **If the company has not received the claim:**

1. Refile the claim. Stamp the claim as a repeat submission or send a cover note.
2. Repeat follow-up steps as needed.

- **If the company has received the claim but considers the billing insufficient:**

1. Supply all additional information requested by the company.
2. Confirm that all requested information has been submitted.

THIRD-PARTY LIABILITY SUPPLEMENT

3. Allow thirty more days for the claim to be processed.
4. If there is no response within thirty days and all information has been supplied as requested, proceed as instructed below.
 - **If the company has received the claim, considers the billing valid, and has not suspended the claim:**
 1. Make a note in your files.
 2. Follow up with a written request for a response.

C. If after two more weeks you have still received no response:

1. Write to the company citing this history of difficulties. Copy the South Carolina Department of Insurance Consumer Division on your letter.

Remember, difficulties with insurance companies do not exempt you from timely filing requirements. It is important that you file a claim as soon as possible after providing a service so that, should you encounter any difficulty, you have time to pursue the steps described above.

Once the Department of Insurance has resolved an issue (which usually takes about 90 days), you should have adequate information to bill Medicaid correctly. Following all the steps above should take no more than 180 days, well within the Medicaid timely filing limit of one year.

Reasonable Effort and Beneficiaries

Difficulties can arise when a beneficiary does not cooperate with an insurer's request for information. For example, U.S. military beneficiaries must report changes in their status and eligibility to the Defense Eligibility and Enrollment Reporting System (DEERS); a delay by a beneficiary may delay a provider's response from the insurer. An insurer may also need a beneficiary to send in subrogation forms related to a hospitalization.

It is in your interest to contact the beneficiary, whether by phone, certified letter, or otherwise. You may offer to help the beneficiary understand and fill out forms. Be sure to document all your attempts at contact and inform the insurer of such actions.

Occasionally insurers will pay a beneficiary instead of a provider. If you know an insurance payment will be made to a patient, you should consider having the patient sign an agreement indicating that the total payment will be turned over to the provider, and that failure to cooperate with the agreement will result in the beneficiary no longer being accepted as a Medicaid patient.

Reasonable Effort Documentation Form

In cases where you have made all reasonable efforts to resolve a situation, you can submit a Reasonable Effort Documentation form. The form must demonstrate that you have made sustained efforts to contact the insurance company or beneficiary. This document is used only as a last resort, when all other attempts at contact and payment collection have failed.

Attach the form to a claim filed as a denial. Attach copies of all documents that demonstrate your efforts (correspondence with the insurer and the Department of Insurance, notes from your files, etc.). If you are filing electronically, you must keep the Reasonable Effort Documentation form

THIRD-PARTY LIABILITY SUPPLEMENT

and all supporting documentation on file. A blank Reasonable Effort Documentation form can be found in the Forms section of your provider manual, and examples appear at the end of this supplement.

REPORTING TPL INFORMATION ON CLAIMS

When you file a claim that includes TPL information, you will report up to five pieces of TPL information, depending on the type of claim:

For each insurer:

1. The carrier code
2. The insured's policy number
3. A payment amount or "0.00"

For the whole claim:

4. A denial indicator when at least one payer has not made payment
5. The total of all payments by other insurers

Carrier Codes

Medicaid, in conjunction with the South Carolina Hospital Association (SCHA), assigns every third-party insurer a unique three-digit alphanumeric code. Among the SCHA carrier codes are a few five-digit codes created by SCDHHS to satisfy carrier-specific claim filing requirements; these are identified by the suffix RX (pharmacy plans). SCHA carrier codes are used to identify insurers and other payers (including the Medicare Advantage plans) on dental, professional, and institutional claims. A complete list of carrier codes can be found in Appendix 2 of those provider manuals.

SCDHHS maintains an entirely separate list of five-digit carrier codes for pharmacy claims submission. Providers should visit <http://southcarolina.fhsc.com> or the SCDHHS Provider Information page at <http://provider.scdhhs.gov/> to view the pharmacy carrier codes list.

With very few exceptions, the alphanumeric carrier codes assigned by the SCHA are three digits, alpha-numeric-alpha. However, if you file hard copy, you may want to indicate a zero as Ø to ensure it is keyed correctly.

If you cannot find a particular carrier or carrier code in your manual, please visit the SCDHHS Provider Information page at <http://provider.scdhhs.gov/> to view the most current carrier codes list.

If you are billing a company for which you cannot find a code, you may use 199, the generic carrier code. MIVS will then call you to ask about the new insurer. You may prefer to submit a Health Insurance Information Referral Form to MIVS while you have the carrier information easily accessible, as MIVS may call you up to one month after the claim has been processed.

You may encounter the "CAS" carrier code when checking a beneficiary's eligibility. This code represents an open casualty case. Medicaid does not cost avoid claims with casualty coverage. You may decide to bill Medicaid directly and forgo participation in the case, or you may take

THIRD-PARTY LIABILITY SUPPLEMENT

action with the liable party and not bill Medicaid. Timely filing requirements still apply even where there is a possible casualty settlement, so you must make your decision prior to the one-year Medicaid timely filing deadline.

Policy Numbers

Many insurance companies use Social Security numbers (SSNs) as policy numbers, but some are transitioning to policy numbers that do not rely on confidential information. You should use the number that appears on the beneficiary's health insurance card.

SCDHHS has begun adding these new policy numbers to beneficiary records. If one of your claims is rejected for failure to file to a private insurer (edit 150) and you have already filed to that insurer, there may be a policy number discrepancy; you should code the claim with the beneficiary's SSN. Edit codes and rejected claims are discussed in more detail below.

PHARMACY CLAIMS

TPL policies apply to all Medicaid services. Like other providers, pharmacists must bill all other potentially liable parties, including Medicare, before billing Medicaid. However, pharmacists' billing procedures differ from those of other providers. Pharmacists do not use the carrier codes assigned by the SCHA; South Carolina Healthy Connections (Medicaid) maintains separate carrier codes for pharmacy claims submission. Providers should visit the SCDHHS Provider Information page at <http://provider.scdhhs.gov> for pharmacy carrier codes. These unique codes may also be found at <http://southcarolina.fhsc.com>.

Pharmacists receive two-character NCPDP edit codes rather than South Carolina Healthy Connections (Medicaid) edit codes. Code 41 indicates that you need to file to a third-party payer, to include Medicare Parts B and D, if applicable.

Pharmacy services are generally cost-avoided; however, SCDHHS performs Pay & Chase billing for insurance resources that are Child Support Enforcement-ordered and in situations where the insurance company will not pay the Medicaid-assigned claim and instead makes payment to the subscriber. Pharmacists who file to primary plans but do not receive the insurance payment should report that fact to MIVS or SCDHHS so that Pay & Chase may be implemented instead of cost avoidance.

The point-of-sale contractor's Pharmacy Provider Manual contains complete instructions on how to submit TPL information on Medicaid claims.

NURSING FACILITY CLAIMS

Nursing facilities are required to follow Medicaid's TPL policies by billing other liable parties before billing Medicaid. The nursing facility claim form, the Turn Around Document, does not provide fields for coding TPL information. In order to have TPL payments calculated, you will report TPL payments and denials on a Health Insurance Information Referral Form and/or submit the insurance EOB with a new DHHS Form 181.

If you discover third-party coverage that Medicaid does not yet have on file, bill the third party and send a Health Insurance Information Referral Form to MIVS so that the insurance record

THIRD-PARTY LIABILITY SUPPLEMENT

may be put online. If Medicaid has already paid, you are responsible for refunding the insurance payment. Failure to report insurance that will likely be subsequently discovered may result in the claim being put into benefit recovery and recouped in a recovery cycle (see the section on recovery for more information).

To initiate Medicaid billing for a resident also covered by a third-party payer, submit a claim to Medicaid and receive a rejection (edit code 156 for commercial insurance) for having failed to file with the other liable third parties. This establishes your willingness to accept a resident as a Medicaid beneficiary. It also shows that you intend to adhere to Medicaid's timely filing requirements.

When you receive a rejected claim, attach all EOBs and submit a new DHHS Form 181 to the Medicaid Claims Control System (MCCS); they will route it to the Medicaid TPL department for processing. If you are subsequently paid by a third party, use Form 205 to refund part or all of your Medicaid payment. Mark "health insurance" as the reason for the refund, supply the insurance information, and attach a check for the amount being refunded.

Remember that claims in recovery have timely filing requirements. SCDHHS suggests that as soon as you receive a 156 edit and/or discover that a resident has third-party coverage, you check your records and bill the third party for previous claims for the current calendar year and for one year prior for which Medicaid should not have paid primary. If you wait for the next recovery cycle, you may run into timely filing deadlines. All previously paid claims that were not filed with the insurance company or third parties are subject to recovery by Medicaid.

Should MIVS mail you a letter of recovery, make sure you follow all procedures and timelines as required. The PSC will be able to assist you in completing all requirements from MIVS in order to avoid a take-back or to reverse a previous take-back.

If you have any other questions or concerns about third-party liability issues, call the PSC. Because nursing home billing cycles are often longer than those of other providers, it is essential that you contact SCDHHS early in the TPL billing process, before timely filing requirements become a concern.

The Nursing Facility Services Provider Manual contains complete billing instructions for nursing facilities. Please see also the following sections of this supplement: Eligibility Verification, Reporting TPL Information to Medicaid, Cost Avoidance vs. Pay & Chase, Timely Filing Requirements, and Reasonable Effort.

PROFESSIONAL, INSTITUTIONAL, AND DENTAL CLAIMS

The CMS-1500 and UB-04 claim forms have space to report two payers other than Medicaid. If there are three or more insurers, you will need to code your claim with the payers listed that pay primary and secondary. When your claim receives edit 151, you must submit a new claim and write in the carrier code, policy number, and amount paid in the third occurrences of fields 24, 25, and 26 of the CMS-1500, Claims submitted electronically will be processed automatically with up to ten primary payers.

THIRD-PARTY LIABILITY SUPPLEMENT

Professional Paper Claims

The CMS-1500 has two areas for entering other insurers: block 9 (fields 9a, 9c, and 9d) and block 11 (fields 11, 11b, and 11c). If there is only one primary insurer, you can use either block. If there are two insurers, use both blocks.

CMS-1500 TPL Fields

9a Other Insured's Policy or Group Number Enter the policy number.	11 Insured's Policy Group or FECA Number Enter the policy number.
9c Reserved for NUCC Use If the insurance has paid, indicate the amount paid in this field. If the insurance has denied payment, enter "0.00" in this field.	11b Other Claim ID (Designated by NUCC) If the insurance has paid, indicate the amount paid in this field. If the insurance has denied payment, enter "0.00" in this field.
9d Insurance Plan Name or Program Name Enter the three-character carrier code.	11c Insurance Plan Name or Program Name Enter the three-character carrier code.

10d Claim Codes (Designated by NUCC)

Enter the appropriate TPL indicator for this claim.

The valid TPL indicators are:

- 1** Insurance denied
- 6** Crime victim
- 8** Uncooperative beneficiary

If either insurer denied payment, you will put the TPL indicator "1" in field 10d. "6" is used to alert SCDHHS to potential criminal proceedings and restitution. "8" is used in conjunction with the Reasonable Effort Documentation form to show that you have been unable to contact a beneficiary from whom you need information and/or payment.

29 Amount Paid

Enter the total amount paid from all insurance sources.
This amount is the sum of 9c and 11b.

Complete instructions for filling out CMS-1500 claim forms can be found in Section 3 of provider manuals for professional services. Sample CMS-1500s with TPL information appear at the end of this supplement.

THIRD-PARTY LIABILITY SUPPLEMENT

Institutional Paper Claims

Unlike other claim types, the UB claim form has a section for listing all parties being billed, **including Medicaid**. Medicaid's carrier code, 619, must be entered on all UB claims submitted to Medicaid.

Fields 50, 54, and 60 are the main fields for coding TPL information.

- Identify all other payers, with the primary payer on line A.
- For each payer other than Medicaid, enter the three-digit carrier code in field 50 and the corresponding payment in field 54.
- For denials, enter the carrier code in field 50 and "0.00" in field 54. Then, enter occurrence code 24 and the date of denial in item 31, 32, 33, or 34.
- You are not required to enter a provider number for payers other than Medicaid, though doing so will not affect your claim.
- Enter Medicaid (619) on line B or C. Leave field 54 of the Medicaid line blank; there will never be a prior payment.
- Enter the patient's 10-digit Medicaid ID number on the lettered line (A, B, or C) that corresponds to the Medicaid line in fields 50 – 54. Enter the other policy numbers on the same lettered line as the code and payment for that carrier.

UB-04 TPL Fields

	50 PAYER	51 PROVIDER NO	54 PRIOR PAYMENTS
A	618/620 (Medicare carrier code)		\$33.01
B	401 (BCBS carrier code)		\$255.39
C	619 (Medicaid carrier code)		

60 CERT.-SSN-HIC.-ID NO.
ABQ1111222
123456789-1212
1234567890

If one claim spans multiple claim forms, fields 50, 51, and 54 must be completed in exactly the same way on each page of the claim.

Complete instructions for filling out UB claim forms can be found in the Hospital Services and Psychiatric Hospital Services provider manuals, and a sample UB-04 with TPL information appears at the end of this supplement.

Dental Paper Claims

For samples and complete instructions for filling out the ADA and CMS-1500 claim forms, refer to the DentaQuest Dental Office Reference Manual (ORM) at <http://www.DentaQuest.com>

THIRD-PARTY LIABILITY SUPPLEMENT

Web-Submitted Claims

The Web Tool User Guide contains instructions for entering TPL information for all claim types except Dental using the Web Tool. The basic steps are the same as for paper claims.

REJECTED CLAIMS

If you file a claim to Medicaid for which you should have first billed a third-party insurer, your claim will be rejected unless 1) the policy has not yet been uploaded to the MMIS, or 2) the service is in Pay & Chase. The Eligibility section on the Web Tool will supply information you need to file with the third-party payer.

Insurance Edits

There are six edit codes indicating that a claim has not been filed to other insurers:

- 150: TPL coverage verified/filing not indicated on claim
- 151: Multiple insurance policies/not all filed – call TPL
- 155: Possible, not positive, insurance match/other errors
- 156: TPL verified/filing not indicated on claim
- 157: TPL coverage; no amount other sources on claim
- 953: Buy-in indicated – possible Medicare payer

If you receive one of these edit codes and have not filed a claim with all third parties listed under the Eligibility section on the Web Tool, you must do so. **Whenever you receive one of these edits, your subsequent attempts to obtain Medicaid payment must have at least one TPL carrier code and policy number even when there is no primary payment.** If a policy has lapsed by the time a claim is processed, SCDHHS will be unable to correctly identify the claim as TPL-related unless you enter the TPL information on a new claim.

The insurance carrier code, the policy number, and the name of the policyholder are all listed under the Eligibility section on the Web Tool, while the carrier's address and telephone number may be found in Appendix 2 of your provider manual or on the SCDHHS Web site. Because of timely filing requirements, you should file with the primary insurer as soon as possible.

If you have already filed a claim with all third parties listed on the Web Tool, check to see that all the information you entered is correct. Compare the carrier code and policy number you entered on the rejected claim and submit a new claim. You must re-enter all TPL information when filing a new claim.

Other TPL-related edit codes include:

- 165:** TPL balance due/patient responsibility must be present and numeric
- 316:** Third party code invalid
- 317:** Invalid injury code
- 390:** TPL payment amount not numeric
- 400:** TPL carrier and policy number must both be present

THIRD-PARTY LIABILITY SUPPLEMENT

- 401:** Amount in other sources, but no TPL carrier code
- 555:** TPL payment is greater than payment due from Medicaid
- 557:** Carrier payments must equal payments from other sources
- 565:** Third-party payment, but no third-party ID
- 690:** Amount from other sources more than Medicaid amount
- 732:** Payer ID number not on file
- 733:** Insurance information coded, but payment or denial indicator missing
- 953:** Buy-in indicated on CIS – possible Medicare

Resolution instructions for these edit codes can be found in Appendix 1 of your provider manual.

CLAIM ADJUSTMENTS AND REFUNDS

If you are paid by a third-party insurer after you have been paid by Medicaid, you should initiate a claim adjustment if you wish to refund the original paid claim in full. You must use the Void/Replacement rather than the Void Only option. Unless there is a replacement claim, new TPL information will not be available to MIVS for investigation and addition to the policy file in the MMIS.

If the refund is for an amount less than the original Medicaid payment, contact MIVS for a manual TPL debit or send a refund check for the appropriate amount. Complete instructions for filing adjustments are in Section 3 of your provider manual, and sample Adjustment Form 130s appear at the end of this supplement. Please remember that hospital providers, pharmacists, and nursing facilities do not use the Form 130.

If you submit a refund to SCDHHS and subsequently discover that it was in error, SCDHHS must receive your credit adjustment request within 90 days of the refund.

Remember: you should not send a check when you make a claim-level adjustment. However, if you need to send a reimbursement check for any reason, fill out the Form for Medicaid Refunds (Form 205 – see the Forms section of your provider manual) and send it with the check to the following address:

South Carolina Healthy Connections
Cash Receipts
PO Box 8355
Columbia, SC 29202

RECOVERY

“Recovery” refers to all situations where Medicaid or the provider pursues third parties who are liable for claims that Medicaid has already paid. Recovery categories include Retro Medicare, Retro Health, and Pay & Chase.

MIVS is responsible for mailing recovery invoices and posting benefit recovery responses. If you have questions about recovery, please contact them directly. See the contact list at the end of the supplement.

THIRD-PARTY LIABILITY SUPPLEMENT

Retro Medicare

SCDHHS invoices institutional and professional medical providers at the beginning of each month for retroactive Medicare coverage (Retro Medicare). You will receive a letter indicating that your account will be debited. The letter identifies Medicare-eligible beneficiaries, claim control numbers, and dates of service, as well as the check date of the automated adjustment and an “own reference number” to identify the debit(s).

You are expected to file the affected claims to Medicare within 30 days of the invoice. After filing to Medicare, you have the option of filing a claim to Medicaid for consideration of an additional payment toward the coinsurance and deductible. Requests for reconsideration of the debit must be received within 90 days of the debit.

If Medicare has denied, you may submit a claim to Medicaid. Provider adjustments will not be submitted for payment in order to eliminate the possibility of duplicate payments. Certain claims for patients with Medicare Part B only, when it is impossible to file them within the one-year timely filing limit, may be an exception.

Despite the extended timely filing deadlines for Medicare-primary claims (six months from Medicare payment or two years from the date of service), you may encounter difficulties with timely filing when Medicare does not make a payment and a claim is in Retro Medicare. If a claim sent to Medicaid is denied with edit 510 for being more than one year after the date of service or six months after the Medicare remittance date, mail, or fax the rejected claim, with supporting documentation to MIVS. If the patient is Part B-only and a UB claim form has received edit 510, the rejected claim, with supporting documentation, should be forwarded or faxed to MIVS. If MIVS determines that the late filing is valid, they will make a credit adjustment.

Claims pulled into Retro Medicare, when filed within 30 days should meet Medicare one year timely filing rule.

Please note that the computer logic also reviews the procedures on the claims and does not pull into recovery procedure codes that are not Medicare covered.

South Carolina Healthy Connections (Medicaid) is responsible for attempting to recover all claims that can be filed within timely filing limits.

Retro Health and Pay & Chase

SCDHHS invoices institutional providers each month for Retro Health and Pay & Chase claims. Providers are expected to file the claims to the primary medical plan within the month of the invoice and to respond to the recovery letter upon receiving the primary adjudication.

One month after the first recovery letter, providers are notified of any claims for which there has been no response. Three months after the first invoice, claims for which there was no response are automatically debited. Requests for reconsideration of the debit must be received within 90 days of the debit. SCDHHS will not reconsider requests after the nine-month cycle.

THIRD-PARTY LIABILITY SUPPLEMENT

Retro Health Example

January 2018	Initial invoice
February 2018	Second letter
March 2018	Notification: Automated debit on last check date of the month

You should submit claims promptly to the primary carriers to avoid receiving timely filing denials from the primary health plans for cost avoidance and for recovery. If you fail to meet timely filing requirements and thus fail to meet a primary carrier's deadline, this is not an acceptable denial; however, when an insurer's timely filing deadline for a date of service is within approximately six weeks of an invoice in Retro Health or possibly before the Medicaid invoice, SCDHHS will accept the insurer's denial and stop a subsequent debit of the Medicaid paid claim from your account.

Insurers occasionally recoup payments made to providers who have put the insurance payment on a Medicaid secondary claim or who have refunded the Medicaid primary payment under Retro Health or Pay & Chase. When the provider submits proof of return of the primary payment, SCDHHS will consider reinstating payment by manual adjustment when the request is received within 90 days of the primary plan request to the provider.

CONCLUSION

Medicaid's ability to fund health care for low-income people relies in part on the success of its cost avoidance measures. For providers, third-party liability responsibilities can be summarized as follows:

- Bill all other liable parties before billing Medicaid.
- Make reasonable, good-faith efforts to get responses from insurers and beneficiaries.
- Code TPL information correctly on claims.

THIRD-PARTY LIABILITY SUPPLEMENT

TPL RESOURCES

The PSC is your first source for questions about third-party liability. Listed below are some other resources.

Dental Claims: Provider questions about third party liability should be directed to the DentaQuest Call Center at 1-888-307-6553 or via e-mail at denclaims@dentaquest.com.

SCDHHS Web site: <http://www.scdhhs.gov>

- Carrier codes
- Provider manuals
- Edit codes and resolutions

Provider Enrollment and Education Web site: <http://MedicaideLearning.com>

- Web Tool User Guide and Addenda

Medicaid Insurance Verification Services

South Carolina Healthy Connections
PO Box 101110
Columbia, SC 29211-9804
Email: MIVS@BCBSSC.com

Main Number	1-888-289-0709 option 5
Other Health Insurance	1-888-289-0709, option 5, option 1 803-252-0870 Fax
Fund Recovery	1-888-289-0709, option 5, option 1 803-462-2582 Fax
General Correspondence	1-888-289-0709, option 5, option 1 803-462-2583 Fax

Casualty, Estate Recovery, and HIPA Correspondence

South Carolina Healthy Connections
PO Box 100127
Columbia, SC 29202-3127

Casualty	1-888-289-0709, option 5, option 2 803-462-2579 Fax
Estate Recovery	1-888-289-0709, option 5, option 3 803-462-2579 Fax

THIRD-PARTY LIABILITY SUPPLEMENT

Health Insurance Premium Payment
Project (HIPP)

1-888-289-0709, option 5, option 4
803-462-2580 Fax

Special Needs Trust

1-888-289-0709, option 5, option 5
803-462-2579 Fax

South Carolina Department of Insurance

300 Arbor Lake Drive, Suite 1200
PO Box 100105
Columbia, SC 29223
<http://www.doi.sc.gov/>

THIRD-PARTY LIABILITY SUPPLEMENT**SAMPLE FORMS**

Form
Health Insurance Information Referral Form: Carrier change
Health Insurance Information Referral Form: Coverage ended
Reasonable Effort Documentation Form: Failure to respond – beneficiary
Reasonable Effort Documentation Form: Failure to respond – insurer
Reasonable Effort Flowchart
Adjustment Form 130: Primary insurer paid after the appeal process
Adjustment Form 130: Primary insurer payment received after Medicaid payment
UB-04: Medicare paid; private insurer denied
CMS-1500: Two private insurers; one paid, one denied
CMS-1500: Medicare and private insurer paid

THIRD-PARTY LIABILITY SUPPLEMENT



SOUTH CAROLINA DEPARTMENT OF HEALTH AND HUMAN SERVICES MEDICAID HEALTH INSURANCE INFORMATION REFERRAL FORM

Provider or Department Name: Acme Dental Clinic Provider ID or NPI: 1234560000

Contact Person: Richard Roe Phone #: 803-555-5555 Date: 03/01/10

I ADD INSURANCE FOR A MEDICAID BENEFICIARY WITH NO INSURANCE IN THE MEDICAID MANAGEMENT INFORMATION SYSTEM (MMIS) – ALLOW 25 DAYS

Beneficiary Name: Jim Smith Date Referral Completed: 02/29/2010

Medicaid ID#: 2222222222 Policy Number: AZ999999999999

Insurance Company Name: OmniCorp Insurers Group Number: 390-OP-777777

Insured's Name: N/A Insured SSN: 777-77-0000

Employer's Name/Address: Retired

II CHANGES TO AN INSURANCE RECORD THAT IS IN THE MMIS – MIV'S SHALL WORK WITHIN 5 DAYS

- ☐ a. beneficiary has never been covered by the policy – close insurance.
- ☒ b. beneficiary coverage ended - terminate coverage (date) 12/31/2009
- ☐ c. subscriber coverage lapsed - terminate coverage (date) _____
- ☐ d. subscriber changed plans under employer - new carrier is _____
- new policy number is _____
- ☐ e. beneficiary to add to insurance already in MMIS for subscriber or other family member.
(name) _____

ATTACH A COPY OF THE APPROPRIATE DOCUMENTATION TO THIS FORM.

Submit this information to Medicaid Insurance Verification Services (MIVS).

Fax: 803-252-0870 or Mail: Post Office Box 101110
Columbia, SC 29211-9804

III NEW POLICY NUMBERS FOR INSURANCE IN THE MMIS WITH THE SUBSCRIBER SSN (SCDHHS is collecting new unique policy numbers and plans to replace existing insurance records through MMIS online modification as computer resources are available.)

Medicaid Beneficiary ID: _____ SSN: _____

Carrier Name/Code: _____ New Unique Policy Number: _____

Submit this information to South Carolina Department of Health and Human Services (SCDHHS).

Fax: 803-255-8225 or Mail: Post Office Box 8206, Attention TPL
Columbia, SC 29202-8206

THIRD-PARTY LIABILITY SUPPLEMENT



SOUTH CAROLINA DEPARTMENT OF HEALTH AND HUMAN SERVICES MEDICAID HEALTH INSURANCE INFORMATION REFERRAL FORM

Provider or Department Name: Acme Dental Clinic Provider ID or NPI: 1234560000

Contact Person: Richard Roe Phone #: 803-555-5555 Date: 03/01/2010

I ADD INSURANCE FOR A MEDICAID BENEFICIARY WITH NO INSURANCE IN THE MEDICAID MANAGEMENT INFORMATION SYSTEM (MMIS) – ALLOW 25 DAYS

Beneficiary Name: John Doe Date Referral Completed: 02/28/2010

Medicaid ID#: 9999999999 Policy Number: DH123456

Insurance Company Name: National Dental Insurance Group Number: QWE1234

Insured's Name: Jane Doe Insured SSN: 123-45-6789

Employer's Name/Address: South Carolina State Library, 1500 Senate Street, Columbia, SC 29201

II CHANGES TO AN INSURANCE RECORD THAT IS IN THE MMIS – MIV'S SHALL WORK WITHIN 5 DAYS

- ☐ a. beneficiary has never been covered by the policy – close insurance.
- ☐ b. beneficiary coverage ended - terminate coverage (date) _____
- ☐ c. subscriber coverage lapsed - terminate coverage (date) _____
- ☒ d. subscriber changed plans under employer - new carrier is GloboChem
- new policy number is A1111111110

- ☐ e. beneficiary to add to insurance already in MMIS for subscriber or other family member.
(name) _____

ATTACH A COPY OF THE APPROPRIATE DOCUMENTATION TO THIS FORM.

Submit this information to Medicaid Insurance Verification Services (MIVS).

Fax: _____ or Mail: _____
803-252-0870 Post Office Box 101110
Columbia, SC 29211-9804

III NEW POLICY NUMBERS FOR INSURANCE IN THE MMIS WITH THE SUBSCRIBER SSN (SCDHHS is collecting new unique policy numbers and plans to replace existing insurance records through MMIS online modification as computer resources are available.)

Medicaid Beneficiary ID: _____ SSN: _____

Carrier Name/Code: _____ New Unique Policy Number: _____

Submit this information to South Carolina Department of Health and Human Services (SCDHHS).

Fax: _____ or Mail: _____
803-255-8225 Post Office Box 8206, Attention TPL
Columbia, SC 29202-8206

THIRD-PARTY LIABILITY SUPPLEMENT



SOUTH CAROLINA DEPARTMENT OF HEALTH AND HUMAN SERVICES REASONABLE EFFORT DOCUMENTATION

PROVIDER Acme Orthopedic **DOS** 01/01/10
NPI or MEDICAID PROVIDER ID 1234567890
MEDICAID BENEFICIARY NAME Jane Doe
MEDICAID BENEFICIARY ID# 1111111111
INSURANCE COMPANY NAME Jones Health Insurance
POLICYHOLDER Jane Doe
POLICY NUMBER 987654321J
ORIGINAL DATE FILED TO INSURANCE COMPANY 01/15/10
DATE OF FOLLOW UP ACTIVITY 02/16/10

RESULT:

Called insurer to check claim status. Insurer needs bene to fill out subrogation forms

FURTHER ACTION TAKEN:

Called beneficiary on 02/16/10, 02/18/10, and 02/28/10. No answer and no answering machine. No other contact info on file w/ Medicaid or insurer.

DATE OF SECOND FOLLOW UP 03/05/10

RESULT:

Sent certified letter offering to help bene fill out forms. Bene refused letter. Called insurer 8/10/08; they will not act without forms.

I HAVE EXHAUSTED ALL OPTIONS FOR OBTAINING A PAYMENT OR SUFFICIENT RESPONSE FROM THE PRIMARY INSURER.

Mary Orthopaed 03/12/10
(SIGNATURE AND DATE)

ATTACH A COPY OF FORM TO A NEW CLAIM AND FORWARD TO YOUR MEDICAID CLAIMS PROCESSING POST OFFICE BOX.

Revised 04/2014

THIRD-PARTY LIABILITY SUPPLEMENT**SOUTH CAROLINA DEPARTMENT OF HEALTH AND HUMAN SERVICES
REASONABLE EFFORT DOCUMENTATION**PROVIDER Dr. Betty Smith DOS 03/05/10NPI or MEDICAID PROVIDER ID 1231231230MEDICAID BENEFICIARY NAME John JonesMEDICAID BENEFICIARY ID# 9999999999INSURANCE COMPANY NAME Global HealthPOLICYHOLDER John JonesPOLICY NUMBER 8888888888ORIGINAL DATE FILED TO INSURANCE COMPANY 03/07/10DATE OF FOLLOW UP ACTIVITY 04/06/10**RESULT:**

Called insurer. They received claim and have not suspended it. Sent follow-up letter requesting a response on 04/10/10.

FURTHER ACTION TAKEN:

04/27/10: No response from insurer. Called again; they could not find claim. Resubmitted on 04/29/10.

DATE OF SECOND FOLLOW UP 05/30/10**RESULT:**

Called insurer; no action on claim. Notified Dept. of Insurance 05/31/10. Case is still open; Dept. of Ins. advised that we file with Medicaid now, as decision may take some time.

I HAVE EXHAUSTED ALL OPTIONS FOR OBTAINING A PAYMENT OR SUFFICIENT RESPONSE FROM THE PRIMARY INSURER.

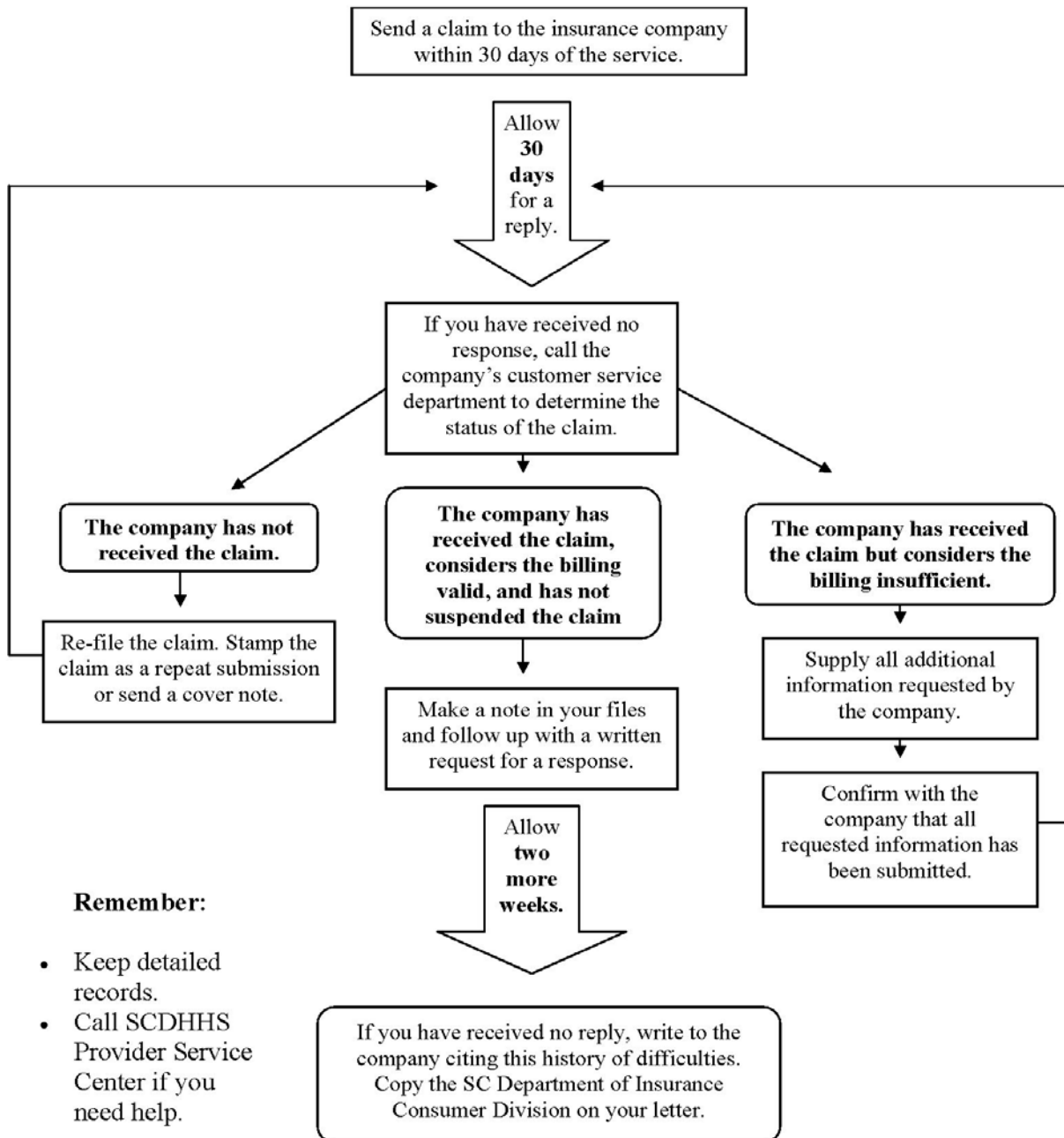
Betty Smith 05/03/10**(SIGNATURE AND DATE)**

ATTACH A COPY OF THE FORM TO A NEW CLAIM AND FORWARD TO YOUR MEDICAID CLAIMS PROCESSING POST OFFICE BOX.

Revised 04/2014

THIRD-PARTY LIABILITY SUPPLEMENT

How to Obtain a Response from Insurance Company A Suggested Third-Party Filing Process



THIRD-PARTY LIABILITY SUPPLEMENT

South Carolina Department of Health and Human Services - Claim Adjustment Form 130

Provider Name: (Please use black or blue ink when completing form)

Johnson DME Supply

Provider Address :

111 Oak Lane

Provider City , State, Zip:

Anywhere, SC 22222-2222

Total paid amount on the original claim:

\$1244.00

Original CCN:

5 5 5 5 5 5 5 5 5 5 5 5 5 5 5 5 A

Provider ID:

A B C 1 2 3

NPI:

1 2 3 4 5 6 7 8 9 0

Recipient ID:

2 2 2 2 2 2 2 2 2 2

Adjustment Type:

☐ Void☒ Void/Replace

Originator:

☐ DHHS☐ MCCS☒ Provider☐ MIVS

Reason For Adjustment: (Fill One Only)

☒ Insurance payment different than original claim☐ Keying errors☐ Incorrect recipient billed☐ Voluntary provider refund due to health insurance☐ Voluntary provider refund due to casualty☐ Voluntary provider refund due to Medicare☐ Medicaid paid twice - void only☐ Incorrect provider paid☐ Incorrect dates of service paid☐ Provider filing error☐ Medicare adjusted the claim☐ Other

For Agency Use Only

Analyst ID:

☐ Hospital/Office Visit included in Surgical Package☐ Independent lab should be paid for service☐ Assistant surgeon paid as primary surgeon☐ Multiple surgery claims submitted for the same DOS☐ MMIS claims processing error☐ Rate change☐ Web Tool error☐ Reference File error☐ MCCS processing error☐ Claim review by Appeals

Comments:

Primary insurer paid after the appeal process.

Signature: Jane Doe

Date: 04/01/10

Phone: (555) 555-5555

DHHS Form 130 Revision date: 03-13-2007

THIRD-PARTY LIABILITY SUPPLEMENT

South Carolina Department of Health and Human Services - Claim Adjustment Form 130

Provider Name: (Please use black or blue ink when completing form)

Dr. Joe Jones

Provider Address :

123 Main Street

Provider City , State, Zip:

Somewhere, SC 22222-0000

Total paid amount on the original claim:

\$230

Original CCN:

8	8	8	8	8	8	8	8	8	8	8	8	8	8	8	8	A
---	---	---	---	---	---	---	---	---	---	---	---	---	---	---	---	---

Provider ID:

--	--	--	--	--	--

NPI:

9	8	7	6	5	4	3	2	1	0
---	---	---	---	---	---	---	---	---	---

Recipient ID:

7	7	7	7	7	7	7	7	7	7
---	---	---	---	---	---	---	---	---	---

Adjustment Type:

☐ Void
 ☒ Void/Replace

Originator:

☐ DHHS
 ☐ MCCS
 ☒ Provider
 ☐ MIVS

Reason For Adjustment: (Fill One Only)

☐ Insurance payment different than original claim

☐ Keying errors

☐ Incorrect recipient billed

☒ Voluntary provider refund due to health insurance

☐ Voluntary provider refund due to casualty

☐ Voluntary provider refund due to Medicare

☐ Medicaid paid twice - void only

☐ Incorrect provider paid

☐ Incorrect dates of service paid

☐ Provider filing error

☐ Medicare adjusted the claim

☐ Other

For Agency Use Only

Analyst ID:

--	--	--	--	--	--

☐ Hospital/Office Visit included in Surgical Package

☐ Independent lab should be paid for service

☐ Assistant surgeon paid as primary surgeon

☐ Multiple surgery claims submitted for the same DOS

☐ MMIS claims processing error

☐ Rate change

☐ Web Tool error

☐ Reference File error

☐ MCCS processing error

☐ Claim review by Appeals

Comments:

Primary insurance payment received after Medicaid payment.

Signature: *Mary Smith* Date: **04/01/10**

Phone: **(803) 555-5555**

DHHS Form 130 Revision date: 03-13-2007

THIRD-PARTY LIABILITY SUPPLEMENT

1 ABC MEDICAL CENTER 111 OAK LANE ANYWHERE SC 22222-0000		2		3a PAT. CNTL. # DOE1234		4 TYPE OF BILL 111	
5 MED. REG. # 654321-654321		6 FED. TAX NO. 00-000000		7 STATEMENT COVERS PERIOD FROM 030910 THROUGH 031010			
8 PATIENT NAME JANE DOE		9 PATIENT ADDRESS 222 MAPLE STREET		10 COLUMBIA		11 SC 22222-2222	
12 BIRTHDATE 01011960		13 SEX F		14 DATE 030910		15 HR 2	
16 DATE 030910		17 STAT 01		18 19 20 21 22 23 24 25 26 27 28 29 ACTY STATE		30	
31 OCCURRENCE DATE 24 033110		32 OCCURRENCE DATE		33 OCCURRENCE DATE		34 OCCURRENCE DATE	
35 CODE		36 CODE		37 CODE		38 CODE	
39 CODE		40 CODE		41 CODE		42 CODE	
43 CODE		44 CODE		45 CODE		46 CODE	
47 CODE		48 CODE		49 CODE		50 CODE	
51 CODE		52 CODE		53 CODE		54 CODE	
55 CODE		56 CODE		57 CODE		58 CODE	
59 CODE		60 CODE		61 CODE		62 CODE	
63 CODE		64 CODE		65 CODE		66 CODE	
67 CODE		68 CODE		69 CODE		70 CODE	
71 CODE		72 CODE		73 CODE		74 CODE	
75 CODE		76 CODE		77 CODE		78 CODE	
79 CODE		80 CODE		81 CODE		82 CODE	
83 CODE		84 CODE		85 CODE		86 CODE	
87 CODE		88 CODE		89 CODE		90 CODE	
91 CODE		92 CODE		93 CODE		94 CODE	
95 CODE		96 CODE		97 CODE		98 CODE	
99 CODE		100 CODE		101 CODE		102 CODE	
103 CODE		104 CODE		105 CODE		106 CODE	
107 CODE		108 CODE		109 CODE		110 CODE	
111 CODE		112 CODE		113 CODE		114 CODE	
115 CODE		116 CODE		117 CODE		118 CODE	
119 CODE		120 CODE		121 CODE		122 CODE	
123 CODE		124 CODE		125 CODE		126 CODE	
127 CODE		128 CODE		129 CODE		130 CODE	
131 CODE		132 CODE		133 CODE		134 CODE	
135 CODE		136 CODE		137 CODE		138 CODE	
139 CODE		140 CODE		141 CODE		142 CODE	
143 CODE		144 CODE		145 CODE		146 CODE	
147 CODE		148 CODE		149 CODE		150 CODE	
151 CODE		152 CODE		153 CODE		154 CODE	
155 CODE		156 CODE		157 CODE		158 CODE	
159 CODE		160 CODE		161 CODE		162 CODE	
163 CODE		164 CODE		165 CODE		166 CODE	
167 CODE		168 CODE		169 CODE		170 CODE	
171 CODE		172 CODE		173 CODE		174 CODE	
175 CODE		176 CODE		177 CODE		178 CODE	
179 CODE		180 CODE		181 CODE		182 CODE	
183 CODE		184 CODE		185 CODE		186 CODE	
187 CODE		188 CODE		189 CODE		190 CODE	
191 CODE		192 CODE		193 CODE		194 CODE	
195 CODE		196 CODE		197 CODE		198 CODE	
199 CODE		200 CODE		201 CODE		202 CODE	
203 CODE		204 CODE		205 CODE		206 CODE	
207 CODE		208 CODE		209 CODE		210 CODE	
211 CODE		212 CODE		213 CODE		214 CODE	
215 CODE		216 CODE		217 CODE		218 CODE	
219 CODE		220 CODE		221 CODE		222 CODE	
223 CODE		224 CODE		225 CODE		226 CODE	
227 CODE		228 CODE		229 CODE		230 CODE	
231 CODE		232 CODE		233 CODE		234 CODE	
235 CODE		236 CODE		237 CODE		238 CODE	
239 CODE		240 CODE		241 CODE		242 CODE	
243 CODE		244 CODE		245 CODE		246 CODE	
247 CODE		248 CODE		249 CODE		250 CODE	
251 CODE		252 CODE		253 CODE		254 CODE	
255 CODE		256 CODE		257 CODE		258 CODE	
259 CODE		260 CODE		261 CODE		262 CODE	
263 CODE		264 CODE		265 CODE		266 CODE	
267 CODE		268 CODE		269 CODE		270 CODE	
271 CODE		272 CODE		273 CODE		274 CODE	
275 CODE		276 CODE		277 CODE		278 CODE	
279 CODE		280 CODE		281 CODE		282 CODE	
283 CODE		284 CODE		285 CODE		286 CODE	
287 CODE		288 CODE		289 CODE		290 CODE	
291 CODE		292 CODE		293 CODE		294 CODE	
295 CODE		296 CODE		297 CODE		298 CODE	
299 CODE		300 CODE		301 CODE		302 CODE	
303 CODE		304 CODE		305 CODE		306 CODE	
307 CODE		308 CODE		309 CODE		310 CODE	
311 CODE		312 CODE		313 CODE		314 CODE	
315 CODE		316 CODE		317 CODE		318 CODE	
319 CODE		320 CODE		321 CODE		322 CODE	
323 CODE		324 CODE		325 CODE		326 CODE	
327 CODE		328 CODE		329 CODE		330 CODE	
331 CODE		332 CODE		333 CODE		334 CODE	
335 CODE		336 CODE		337 CODE		338 CODE	
339 CODE		340 CODE		341 CODE		342 CODE	
343 CODE		344 CODE		345 CODE		346 CODE	
347 CODE		348 CODE		349 CODE		350 CODE	
351 CODE		352 CODE		353 CODE		354 CODE	
355 CODE		356 CODE		357 CODE		358 CODE	
359 CODE		360 CODE		361 CODE		362 CODE	
363 CODE		364 CODE		365 CODE		366 CODE	
367 CODE		368 CODE		369 CODE		370 CODE	
371 CODE		372 CODE		373 CODE		374 CODE	
375 CODE		376 CODE		377 CODE		378 CODE	
379 CODE		380 CODE		381 CODE		382 CODE	
383 CODE		384 CODE		385 CODE		386 CODE	
387 CODE		388 CODE		389 CODE		390 CODE	
391 CODE		392 CODE		393 CODE		394 CODE	
395 CODE		396 CODE		397 CODE		398 CODE	
399 CODE		400 CODE		401 CODE		402 CODE	
403 CODE		404 CODE		405 CODE		406 CODE	
407 CODE		408 CODE		409 CODE		410 CODE	
411 CODE		412 CODE		413 CODE		414 CODE	
415 CODE		416 CODE		417 CODE		418 CODE	
419 CODE		420 CODE		421 CODE		422 CODE	
423 CODE		424 CODE		425 CODE		426 CODE	
427 CODE		428 CODE		429 CODE		430 CODE	
431 CODE		432 CODE		433 CODE		434 CODE	
435 CODE		436 CODE		437 CODE		438 CODE	
439 CODE		440 CODE		441 CODE		442 CODE	
443 CODE		444 CODE		445 CODE		446 CODE	
447 CODE		448 CODE		449 CODE		450 CODE	
451 CODE		452 CODE		453 CODE		454 CODE	
455 CODE		456 CODE		457 CODE		458 CODE	
459 CODE		460 CODE		461 CODE		462 CODE	
463 CODE		464 CODE		465 CODE		466 CODE	
467 CODE		468 CODE		469 CODE		470 CODE	
471 CODE		472 CODE		473 CODE		474 CODE	
475 CODE		476 CODE		477 CODE		478 CODE	
479 CODE		480 CODE		481 CODE		482 CODE	
483 CODE		484 CODE		485 CODE		486 CODE	
487 CODE		488 CODE		489 CODE		490 CODE	
491 CODE		492 CODE		493 CODE		494 CODE	
495 CODE		496 CODE		497 CODE		498 CODE	
499 CODE		500 CODE		501 CODE		502 CODE	
503 CODE		504 CODE		505 CODE		506 CODE	
507 CODE		508 CODE		509 CODE		510 CODE	
511 CODE		512 CODE		513 CODE		514 CODE	
515 CODE		516 CODE		517 CODE		518 CODE	
519 CODE		520 CODE		521 CODE		522 CODE	
523 CODE		524 CODE		525 CODE		526 CODE	
527 CODE		528 CODE		529 CODE		530 CODE	
531 CODE		532 CODE		533 CODE		534 CODE	
535 CODE		536 CODE		537 CODE		538 CODE	
539 CODE		540 CODE		541 CODE		542 CODE	
543 CODE		544 CODE		545 CODE		546 CODE	
547 CODE		548 CODE		549 CODE		550 CODE	
551 CODE		552 CODE		553 CODE		554 CODE	
555 CODE		556 CODE		557 CODE		558 CODE	
559 CODE		560 CODE		561 CODE		562 CODE	
563 CODE		564 CODE		565 CODE		566 CODE	
567 CODE		568 CODE		569 CODE		570 CODE	
571 CODE		572 CODE		573 CODE		574 CODE	
575 CODE		576 CODE		577 CODE		578 CODE	
579 CODE		580 CODE		581 CODE		582 CODE	
583 CODE		584 CODE		585 CODE		586 CODE	
587 CODE		588 CODE		589 CODE		590 CODE	
591 CODE		592 CODE		593 CODE		594 CODE	
595 CODE		596 CODE		597 CODE		598 CODE	
599 CODE		600 CODE		601 CODE		602 CODE	
603 CODE		604 CODE		605 CODE		606 CODE	
607 CODE		608 CODE		609 CODE		610 CODE	
611 CODE		612 CODE		613 CODE		614 CODE	
615 CODE		616 CODE		617 CODE		618 CODE	
619 CODE		620 CODE		621 CODE		622 CODE	
623 CODE		624 CODE		625 CODE		626 CODE	
627 CODE		628 CODE		629 CODE		630 CODE	
631 CODE		632 CODE		633 CODE		634 CODE	
635 CODE		636 CODE		637 CODE		638 CODE	
639 CODE		640 CODE		641 CODE		642 CODE	
643 CODE		644 CODE		645 CODE		646 CODE	
647 CODE		648 CODE		649 CODE		650 CODE	
651 CODE		652 CODE		653 CODE		654 CODE	
655 CODE		656 CODE		657 CODE		658 CODE	
659 CODE		660 CODE		661 CODE		662 CODE	
663 CODE		664 CODE		665 CODE		666 CODE	
667 CODE		668 CODE		669 CODE		670 CODE	
671 CODE		672 CODE		673 CODE		674 CODE	
675 CODE		676 CODE		677 CODE		678 CODE	
679 CODE		680 CODE		681 CODE		682 CODE	
683 CODE		684 CODE		685 CODE		686 CODE	
687 CODE		688 CODE		689 CODE		690 CODE	
691 CODE		692 CODE		693 CODE		694 CODE	
695 CODE		696 CODE		697 CODE		698 CODE	
699 CODE		700 CODE		701 CODE		702 CODE	
703 CODE		704 CODE		705 CODE		706 CODE	
707 CODE		708 CODE		709 CODE		710 CODE	
711 CODE		712 CODE		713 CODE		714 CODE	
715 CODE		716 CODE		717 CODE		718 CODE	
719 CODE		720 CODE		721 CODE		722 CODE	
723 CODE		724 CODE		725 CODE		726 CODE	
727 CODE		728 CODE		729 CODE		730 CODE	
731 CODE		732 CODE		733 CODE		734 CODE	
735 CODE		736 CODE		737 CODE		738 CODE	
739 CODE		740 CODE		741 CODE		742 CODE	
743 CODE		744 CODE		745 CODE		746 CODE	
747 CODE		748 CODE		749 CODE		750 CODE	
751 CODE		752 CODE		753 CODE		754 CODE	
755 CODE		756 CODE		757 CODE		758 CODE	
759 CODE		760 CODE		761 CODE		762 CODE	
763 CODE		764 CODE		765 CODE		766 CODE	
767 CODE		768 CODE		769 CODE		770 CODE	
771 CODE		772 CODE		773 CODE		774 CODE	
775 CODE		776 CODE		777 CODE		778 CODE	
779 CODE		780 CODE		781 CODE		782 CODE	
783 CODE		784 CODE		785 CODE		786 CODE	
787 CODE		788 CODE		789 CODE		790 CODE	
791 CODE		792 CODE		793 CODE		794 CODE	
795 CODE		796 CODE		797 CODE		798 CODE	
799 CODE		800 CODE		801 CODE		802 CODE	
803 CODE		804 CODE		805 CODE		806 CODE	
807 CODE		808 CODE		809 CODE		810 CODE	
811 CODE		812 CODE		813 CODE		814 CODE	
815 CODE		816 CODE		817 CODE		818 CODE	
819 CODE		820 CODE		821 CODE		822 CODE	
823 CODE		824 CODE		825 CODE		826 CODE	
827 CODE		828 CODE		829 CODE		830 CODE	

THIRD-PARTY LIABILITY SUPPLEMENT



HEALTH INSURANCE CLAIM FORM

APPROVED BY NATIONAL UNIFORM CLAIM COMMITTEE (NUCC) 02/12

One Carrier Paid; One Carrier Denied

PICA										PICA									
1. MEDICARE <input type="checkbox"/> MEDICAID <input checked="" type="checkbox"/> TRICARE <input type="checkbox"/> CHAMPVA <input type="checkbox"/> GROUP HEALTH PLAN <input checked="" type="checkbox"/> FECA BULK LUNG <input type="checkbox"/> OTHER <input type="checkbox"/> <small>(Medicare#) (Medicaid#) (ID#/DoD#) (Member ID#) (ID#) (ID#)</small>										1a. INSURED'S I.D. NUMBER (For Program in Item 1) 1234567890									
2. PATIENT'S NAME (Last Name, First Name, Middle Initial) Doe, Jane A										3. PATIENT'S BIRTH DATE MM DD YY SEX 01 01 1947 M <input type="checkbox"/> F <input checked="" type="checkbox"/>									
5. PATIENT'S ADDRESS (No., Street) 123 Windy Lane CITY Anytown STATE SC ZIP CODE 29999 TELEPHONE (Include Area Code) () ()										4. INSURED'S NAME (Last Name, First Name, Middle Initial) 7. INSURED'S ADDRESS (No., Street) CITY STATE ZIP CODE TELEPHONE (Include Area Code) () ()									
9. OTHER INSURED'S NAME (Last Name, First Name, Middle Initial) a. OTHER INSURED'S POLICY OR GROUP NUMBER A111111111122 b. RESERVED FOR NUCC USE c. RESERVED FOR NUCC USE 0.00 d. INSURANCE PLAN NAME OR PROGRAM NAME 134										10. IS PATIENT'S CONDITION RELATED TO: a. EMPLOYMENT? (Current or Previous) <input type="checkbox"/> YES <input checked="" type="checkbox"/> NO b. AUTO ACCIDENT? <input type="checkbox"/> YES <input checked="" type="checkbox"/> NO PLACE (State) _____ c. OTHER ACCIDENT? <input type="checkbox"/> YES <input checked="" type="checkbox"/> NO 10d. CLAIM CODES (Designated by NUCC) 1									
12. PATIENT'S OR AUTHORIZED PERSON'S SIGNATURE I authorize the release of any medical or other information necessary to process this claim. I also request payment of government benefits either to myself or to the party who accepts assignment below. SIGNED: Signature on File DATE:										11. INSURED'S POLICY GROUP OR FECA NUMBER 012345678 a. INSURED'S DATE OF BIRTH MM DD YY SEX M <input type="checkbox"/> F <input type="checkbox"/> b. OTHER CLAIM ID (Designated by NUCC) 10.00 c. INSURANCE PLAN NAME OR PROGRAM NAME 400 d. IS THERE ANOTHER HEALTH BENEFIT PLAN? <input checked="" type="checkbox"/> YES <input type="checkbox"/> NO If yes, complete items 9, 9a, and 9d.									
14. DATE OF CURRENT ILLNESS, INJURY, OR PREGNANCY (M/P) MM DD YY QUAL. 17a. NPI 17b. NPI										16. DATES PATIENT INADJACENT TO WORK IN CURRENT OCCUPATION FROM MM DD YY TO MM DD YY 18. HOSPITALIZATION DATES RELATIVE TO CURRENT SERVICES FROM MM DD YY TO MM DD YY 20. OUTSIDE LAB? <input type="checkbox"/> YES <input type="checkbox"/> NO \$ CHARGES 22. RESUBMISSION CODE ORIGINAL REF. NO. 23. PRIOR AUTHORIZATION NUMBER									
21. DIAGNOSIS OR NATURE OF ILLNESS OR INJURY Relate A-L to service line below (24E) A. 295.35 B. C. D. E. F. G. H. I. J. K. L.										24. A. DATE(S) OF SERVICE From MM DD YY To MM DD YY B. PLACE OF SERVICE C. EMG D. PROCEDURES, SERVICES, OR SUPPLIES (Explain Unusual Circumstances) CPT/HCPCS MODIFIER E. DIAGNOSIS POINTER F. \$ CHARGES G. DAYS OR UNITS H. SPOT/FAMILY PLAN I. ID. QUAL. J. RENDERING PROVIDER ID. #									
25. FEDERAL TAX I.D. NUMBER SSN EIN <input checked="" type="checkbox"/> 26. PATIENT'S ACCOUNT NO. DOE1234 27. ACCEPT ASSIGNMENT? (For gov. claims, see back) <input checked="" type="checkbox"/> YES <input type="checkbox"/> NO										28. TOTAL CHARGE \$ 20 00 29. AMOUNT PAID \$ 10 00 30. Flwd for NUCC Use 10 00									
31. SIGNATURE OF PHYSICIAN OR SUPPLIER INCLUDING DEGREES OR CREDENTIALS (I certify that the statements on the reverse apply to this bill and are made a part thereof.) SIGNED: DATE:										32. SERVICE FACILITY LOCATION INFORMATION a. NPI b. ZZ12121212									
33. BILLING PROVIDER INFO & PH # (555) 5555555 ABC Clinic 111 Main Street Anytown, SC 22222-2222 a. 1234567890 b. ZZ12121212																			

NUCC Instruction Manual available at: www.nucc.org

PLEASE PRINT OR TYPE

APPROVED OMB-0938-1197 FORM 1500 (02-12)

THIRD-PARTY LIABILITY SUPPLEMENT



HEALTH INSURANCE CLAIM FORM

APPROVED BY NATIONAL UNIFORM CLAIM COMMITTEE (NUCC) 02/12

Medicare Paid; Private Carrier Paid

<input type="checkbox"/> PICA		<input type="checkbox"/> PICA	
1. MEDICARE <input checked="" type="checkbox"/> (Medicare#) <input checked="" type="checkbox"/> MEDICAID <input type="checkbox"/> (Medicaid#) <input type="checkbox"/> (ID#/DoD#) <input type="checkbox"/> CHAMPVA <input type="checkbox"/> (Member ID#) <input checked="" type="checkbox"/> GROUP HEALTH PLAN <input type="checkbox"/> (ID#) <input type="checkbox"/> FECA BLK(LING) <input type="checkbox"/> (ID#) <input type="checkbox"/> OTHER <input type="checkbox"/> (ID#)		1a. INSURED'S I.D. NUMBER (For Program in Item 1) 1234567890	
2. PATIENT'S NAME (Last Name, First Name, Middle Initial) Doe, Jane A		3. PATIENT'S BIRTH DATE MM DD YY 01 01 1947 M <input type="checkbox"/> F <input checked="" type="checkbox"/>	
4. INSURED'S NAME (Last Name, First Name, Middle Initial)		5. INSURED'S ADDRESS (No., Street) 123 Windy Lane	
6. PATIENT RELATIONSHIP TO INSURED Self <input type="checkbox"/> Spouse <input type="checkbox"/> Child <input type="checkbox"/> Other <input type="checkbox"/>		7. INSURED'S ADDRESS (No., Street)	
8. RESERVED FOR NUCC USE		9. OTHER INSURED'S NAME (Last Name, First Name, Middle Initial)	
10. IS PATIENT'S CONDITION RELATED TO: a. EMPLOYMENT? (Current or Previous) <input type="checkbox"/> YES <input checked="" type="checkbox"/> NO b. AUTO ACCIDENT? <input type="checkbox"/> YES <input checked="" type="checkbox"/> NO c. OTHER ACCIDENT? <input type="checkbox"/> YES <input checked="" type="checkbox"/> NO		11. INSURED'S POLICY GROUP OR FECA NUMBER 111222333A	
12. PATIENT'S OR AUTHORIZED PERSON'S SIGNATURE I authorize the release of any medical or other information necessary to process this claim. I also request payment of government benefits either to myself or to the party who accepts assignment below. Signature on File		13. INSURED'S OR AUTHORIZED PERSON'S SIGNATURE I authorize payment of medical benefits to the undersigned physician or supplier for services described below.	
14. DATE OF CURRENT INJURY OR PHASE OF INJURY (LINE 1) MM DD YY 01 01 13		15. DATE OF CURRENT INJURY OR PHASE OF INJURY (LINE 2) MM DD YY 01 01 13	
16. NAME OF REFERRING PROVIDER OR OTHER REFERRER 16a. NAME 16b. NPI		17. NAME OF REFERRING PROVIDER OR OTHER REFERRER 17a. NAME 17b. NPI	
19. ADDITIONAL CLAIM INFORMATION (Designated by NUCC)		20. OUTSIDE LAB? <input type="checkbox"/> YES <input type="checkbox"/> NO	
21. DIAGNOSIS OR NATURE OF ILLNESS OR INJURY Relate A-L to service line below (24E) A. 295.35 B. C. D. E. F. G. H. I. J. K. L.		22. RESUBMISSION CODE ORIGINAL REF. NO.	
24. A. DATE(S) OF SERVICE From To B. PLACE OF SERVICE C. EMG D. PROCEDURES, SERVICES, OR SUPPLIES (Explain Unusual Circumstances) CPT/HCPCS MODIFIER E. DIAGNOSIS POINTER		25. FEDERAL TAX I.D. NUMBER SSN EIN 55555555 <input type="checkbox"/> <input checked="" type="checkbox"/> 26. PATIENT'S ACCOUNT NO. DOE1234 27. ACCEPT ASSIGNMENT? (For govt. claims, see back) <input checked="" type="checkbox"/> YES <input type="checkbox"/> NO	
28. TOTAL CHARGE \$ 20 00 29. AMOUNT PAID \$ 15 00 30. Paid for NUCC Use 5 00		31. SIGNATURE OF PHYSICIAN OR SUPPLIER INCLUDING DEGREES OR CREDENTIALS (I certify that the statements on the reverse apply to this bill and are made a part thereof.)	
32. SERVICE FACILITY LOCATION INFORMATION		33. BILLING PROVIDER INFO & PH # (555) 5555555	
34. SIGNATURE DATE		35. SIGNATURE DATE	

NUCC Instruction Manual available at: www.nucc.org

PLEASE PRINT OR TYPE

APPROVED OMB-0938-1197 FORM 1500 (02-12)

THIRD-PARTY LIABILITY SUPPLEMENT

This page was intentionally left blank.