

Environmental Modifications and Ramps Guidance for MMPs



This document summarizes the processes and conditions that apply to authorizing environmental modifications and ramps for Healthy Connections Prime members, either as a Community Long Term Care (CLTC) waiver service or as an MMP-approved waiver-like service. The source material for this information is the CLTC Community Choices Policy and Procedure Manual, last updated July 1, 2017. As the manual is updated occasionally, please refer to that document for the most up-to-date information.

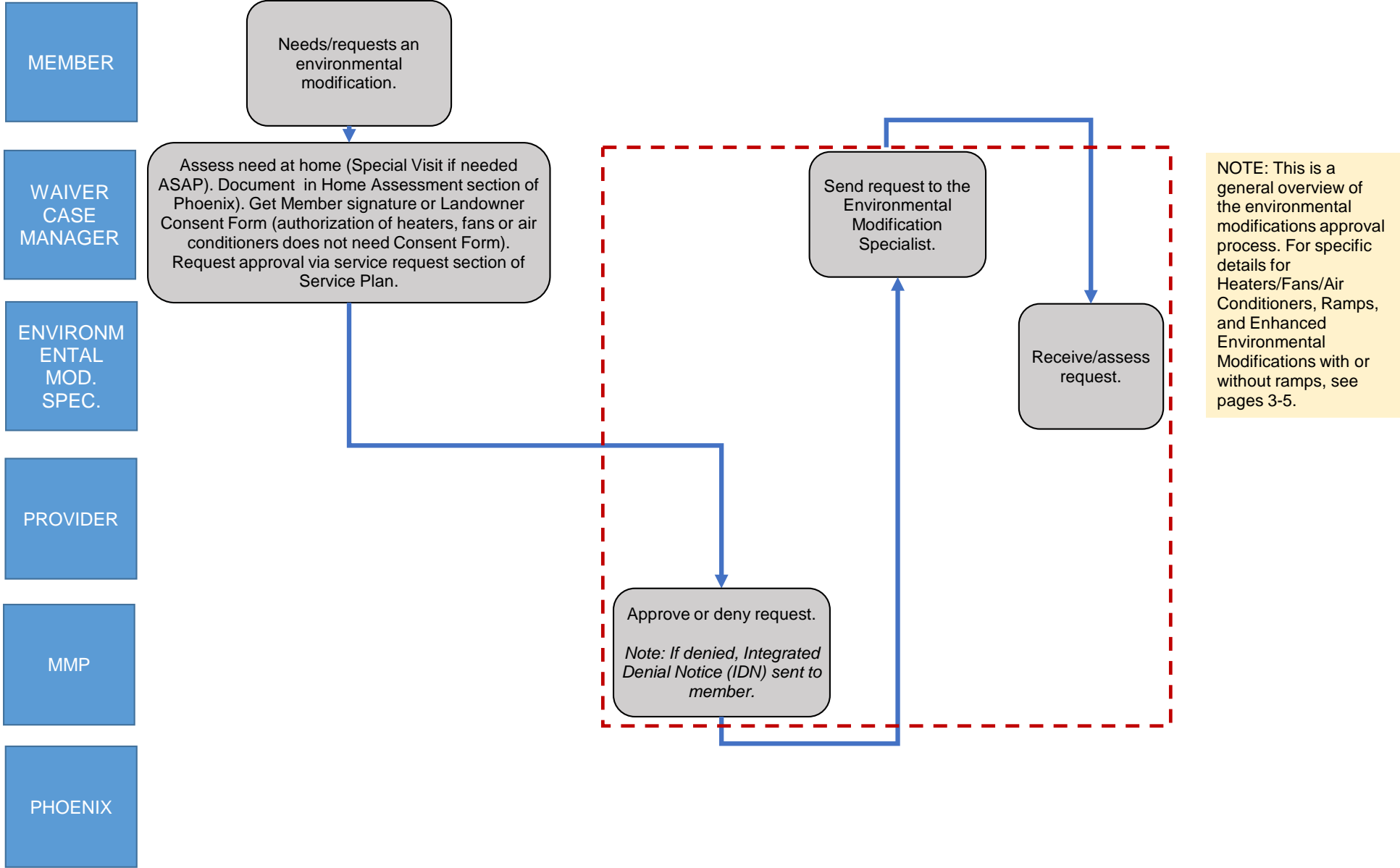
Summary of Service Authorization Conditions

NOTE: All modifications must be for the benefit of the participant and necessary to ensure their health, wellness, & safety

	Environmental Modifications (Section 7H)	Heaters/Fans/Air Conditioners (Section 7H-1)	ONLY Ramp (Section 7H-2)	Enhanced Environmental Modifications ONLY (Section 7H-3)	Enhanced Environmental Modifications with Ramp (Section 7H-4)
Landowner requirements	Must complete landowner consent	Does NOT require landowner consent	Must complete landowner consent	Own their home or home owned by family member (no rent paid)	Own their home or home owned by family member (no rent paid)
Service Cap - \$7,500 lifetime cap for all environmental modifications, ramps, heaters, fans, A/C	Must be within lifetime cap	One of each item will be authorized every 2 years (note: recently changed from every 3 years)	Must be within lifetime cap <i>(Note: Only one ramp may be authorized at a time. If a participant moves or a current ramp is deemed unsafe, the Case Manager may make a home visit and assess need. Additional ramp may be approved if within lifetime cap.)</i>	Must be within lifetime cap	Must be within lifetime cap
Pricing	N/A	- A/C reimbursed at \$415 including installation & 1 year warranty - Box fans reimbursed at \$40 - Heaters reimbursed at \$65 including delivery and setup, with 1 year warranty	- Ramp: \$45/foot - Landings: \$15/ft - Wedges: \$12/ft - Deck raising: \$4/ft - Adding layer of 2 x 6 or 5/4 x 6 to existing structure: \$5/ft - Adding railing to existing structure: \$13/ft	N/A	N/A
Non-financial limitations	N/A	- A/C must be 10,000 BTU - Box fans must have 3 speeds - Heaters must have safety shut off feature. Alternatives allowed: Lasko2 Heat Tower electric space heater Model 6251 Item# 142570 and Warmwave 1,500 watt ceramic portable tower heater Model HPQ15M.	Ramp must be ADA compliant and meet CLTC requirements. Required permits are the responsibility of the provider. Participants are responsible for ramp maintenance.	See "landowner requirements"	See "landowner requirements"

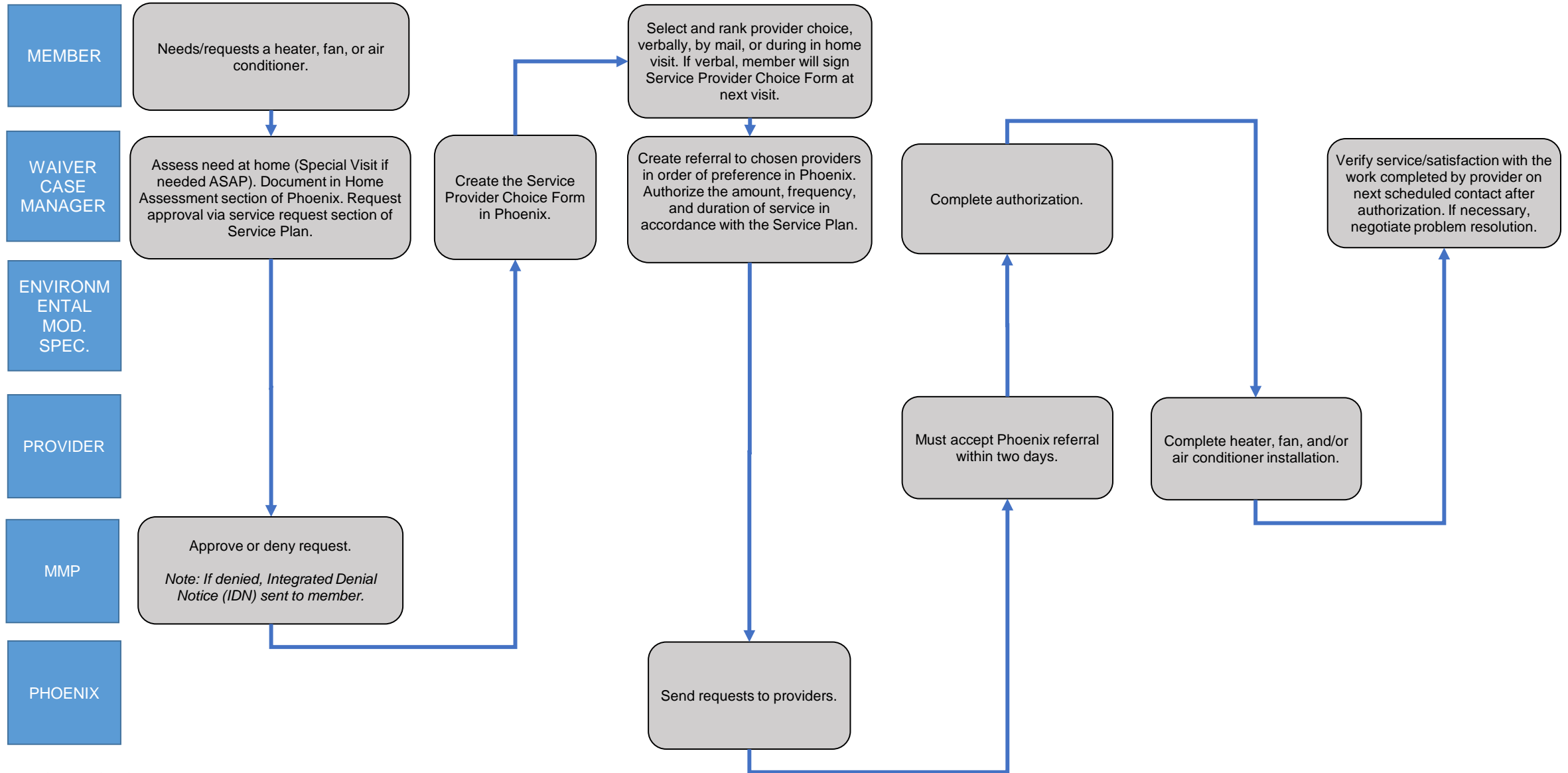
Environmental Modifications Overview

Blue boxes represent a responsible party/individual; gray boxes represent action items. Yellow boxes are comments.



Heaters/Fans/Air Conditioners

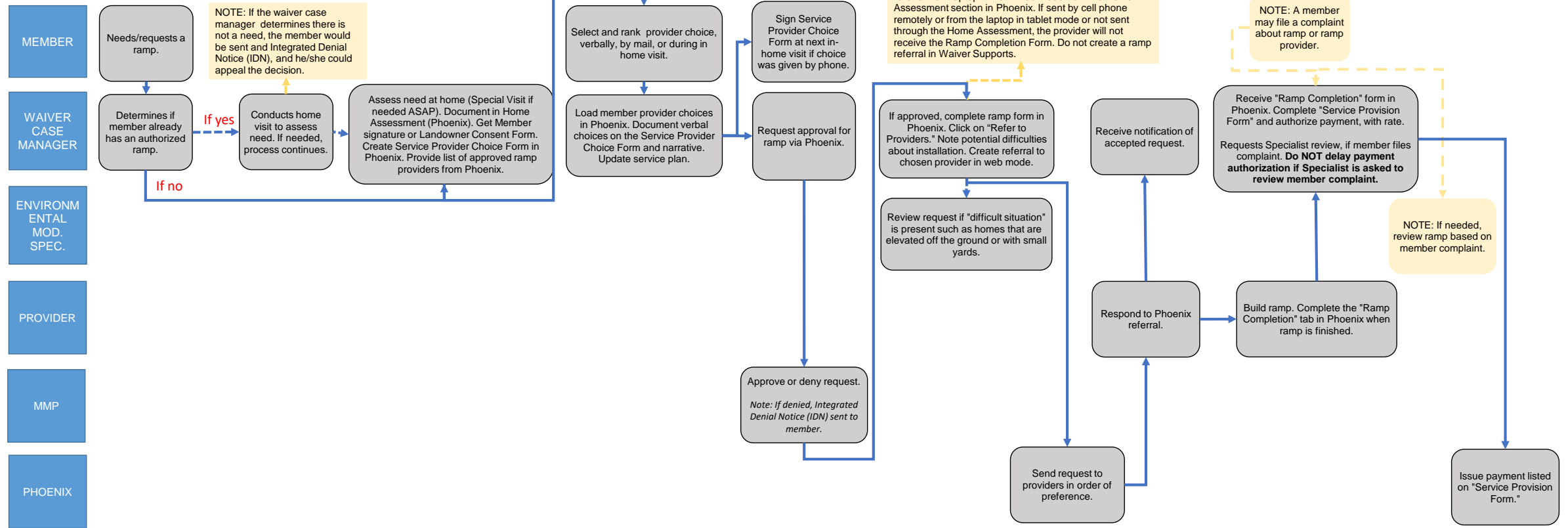
Blue boxes represent a responsible party/individual; gray boxes represent action items.



Source: CLTC Policy and Procedure Manual, version July 1, 2017

Home Modifications: Ramps ONLY

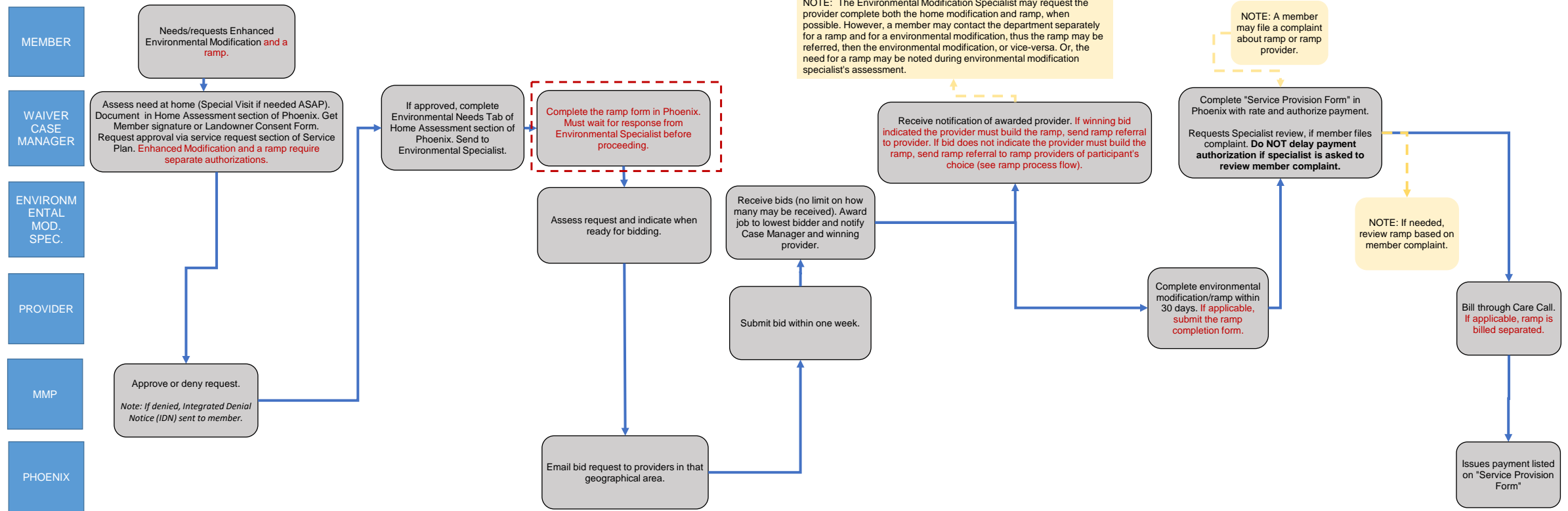
Blue boxes represent a responsible party/individual; gray boxes represent action items. Yellow boxes are comments.



Source: CLTC Policy and Procedure Manual, version July 1, 2017

Enhanced Environmental Modifications with or without Ramp

Blue boxes represent a responsible party/individual; gray boxes represent action items. Red dashed box and items in red font represents a step that only occurs if a ramp is requested. Yellow boxes are comments



Note: If there is a critical need for the ramp and it cannot wait for the enhanced modification bids, Case Manager may authorize ramp according to ramp policy. See "Ramp" process flow details regarding this process.
 Source: CLTC Policy and Procedure Manual, version July 1, 2017