



RBHS Clubhouse Program Presentation



February 29, 2016

Today's Agenda

- **Provide an overview of the Healthy Connections Prime program**
- **Discuss upcoming enrollment activities**
- **Discuss How Healthy Connections Prime and RBHS providers may interact**

Background

- **New program** for seniors age 65 and older with Medicare and Medicaid
- **Healthy Connections Prime** is part of a **national initiative** jointly administered by CMS and SCDHHS, designed to integrate all the services of Medicare, Medicare Part D, and Medicaid under a **single Medicare-Medicaid plan**
- **41 counties** participating

<Health Plan Name and/or Logo>		Healthy Connections PRIME 
Member Name: Member ID: Health Plan (80840):		 MedicareRx <small>Prescription Drug Coverage</small>
PCP Name: PCP Phone:		
<CMS Contract #>	<Plan Benefit Package #>	RxBIN: RxPCN: RxGRP: RxID:



Healthy Connections Prime is designed to promote:

- Better care through **a single set of benefits** representing all services under Medicare, Medicare Part D and Medicaid
- Better value through a **care team and care manager** that works with the individual and his/her providers
- Better health through flexible benefits that **help seniors stay at home as long as possible**

Healthy Connections Prime will cover the following services:

- 24– hour nurse advice line
- Adult day health services
- Care manager (*coordinates care from different providers*)
- Community long term care
- Dental services
- Diabetes management services
- Doctor visits (*unlimited*)
- Help transitioning back home from hospital or nursing home
- Home health
- Hospital and urgent care
- In-home safety assessments
- Lab tests, x-rays and imaging
- Medical equipment (*blood sugar monitors, walkers, wheelchairs, etc.*)
- Mental health services
- Nursing facility
- Nutritional supplements
- Personal care
- Prescription drug coverage
- Prosthetics
- Skilled nursing facility care
- Support for family caregivers
- Therapy (*physical, occupational, speech/ language*)
- Transportation to medical appointments



What does Healthy Connections Prime offer beneficiaries?

Services*	Healthy Connections Prime	Original Medicare	Medicare Part D	Healthy Connections Medicaid
Doctor Visits and Lab Tests/X-rays	★	★		
Urgent and Hospital Care	★	★		
Nursing Facility Care	★	★		
Medical Equipment (blood sugar monitors, walkers, wheelchairs, etc.)	★	★		★
Prescription Drugs	★		★	
Community Long Term Care (CLTC) (personal care, home-delivered meals, etc.)	★			★
Right to hire, fire, and manage your home care attendant	★			★
Support for family caregivers	★			★
Transportation to medical appointments	★			★
Dental Services	★			★
Vision Benefits (offered by some plans)	★			

Plus...

- ✓ One plan
- ✓ One insurance card
- ✓ One member services number to call
- ✓ No insurance premiums
- ✓ No costs for doctor visits and hospital stays
- ✓ A personal care coordinator
- ✓ A care team of the member's choosing
- ✓ 6-month continuity of care

Continuity of Care

- 6-month continuity of care period
- Members maintain providers and services
- No change in service authorization levels for direct care waiver services
- Standard Part D transition rules apply

CONTINUITY OF CARE OPTIONS

- 1 Full Contract**
Serve any member
- 2 Single Case Agreement**
Serve one particular member beyond the six month transition period
- 3 Transition Process**
Serve for up to six months while member transitions to a Healthy Connections Prime provider

Out-of-network providers reimbursed at current Medicare and Medicaid fee-for-service rates



Enrollment

Individuals may be eligible to enroll if they are:

- Age 65 or older;
- Have Medicare benefits;
- Have full Healthy Connections Medicaid benefits; and
- Are living at home

Enrollment Phase	Information
<p>Open Enrollment (~51,000 eligible enrollees)</p>	<ul style="list-style-type: none"> • Ongoing • Medicare-Medicaid enrollees choose to participate with Healthy Connections Prime
<p>Passive Enrollment (~12,800 eligible enrollees)</p>	<ul style="list-style-type: none"> • Will occur in two initial phases, and is on going monthly • Eligible enrollees are automatically assigned to a Medicare-Medicaid plan

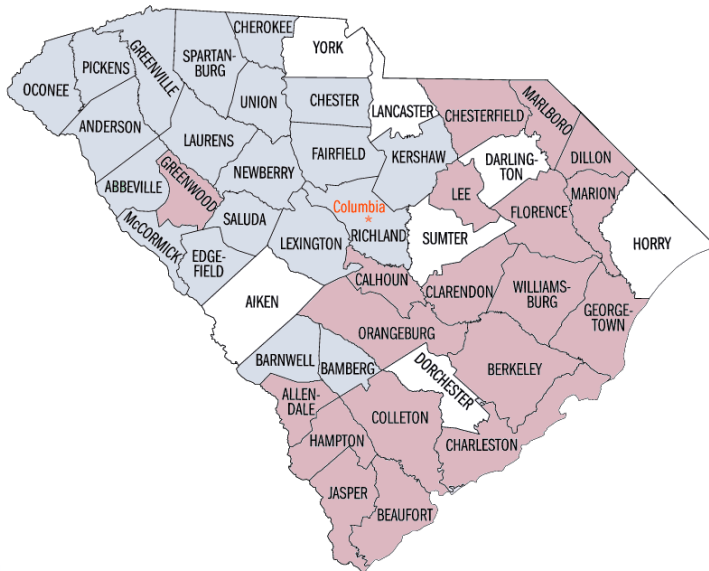
Passive Enrollment Timeline*

Wave 1

- Effective April 1, 2016
- Upstate Region
- Projected Eligibles = 5,300

Wave 2

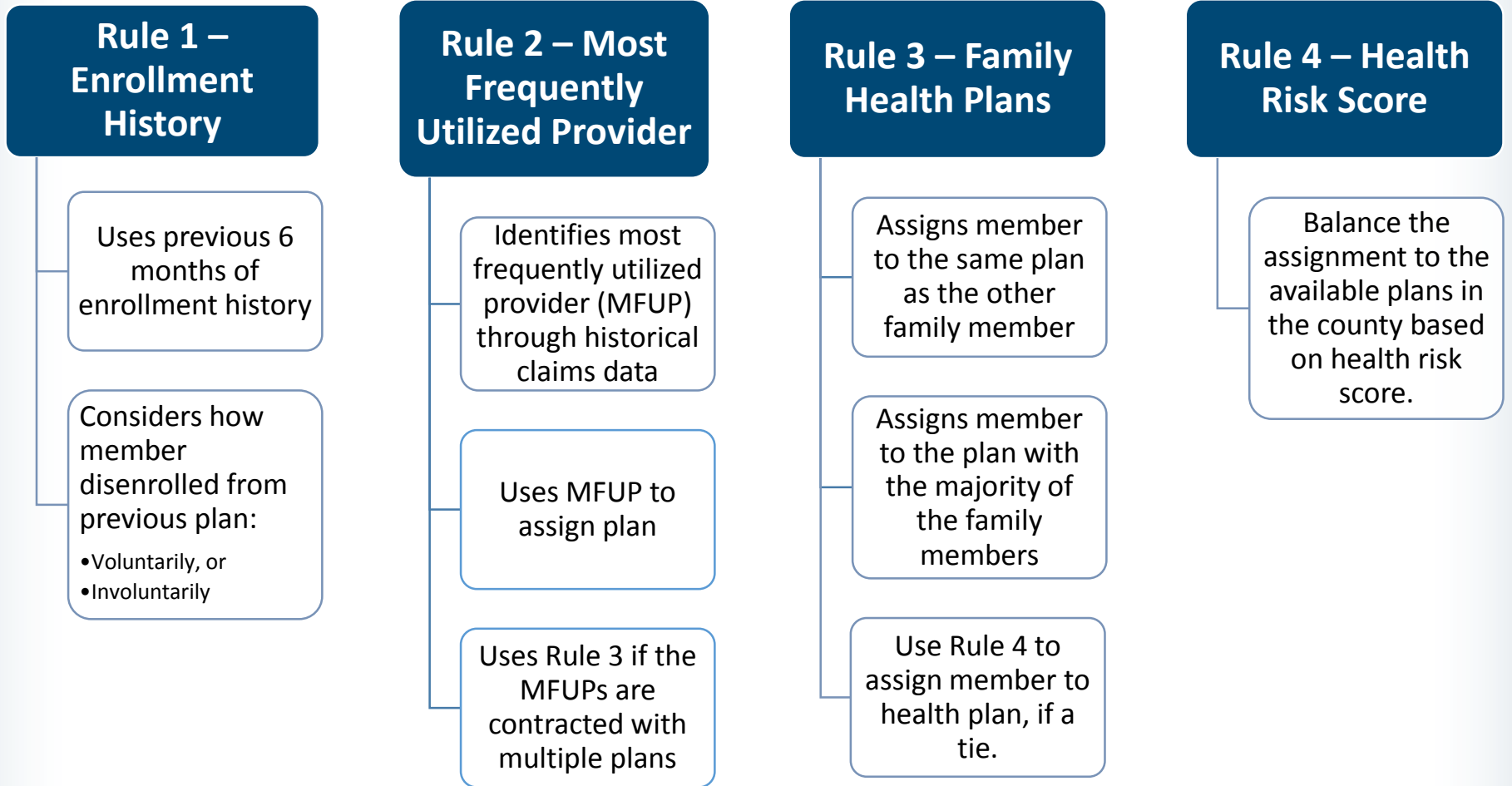
- Effective July 1, 2016
- Coastal Region and CLTC Waiver Population
- Projected Eligibles = 7,500



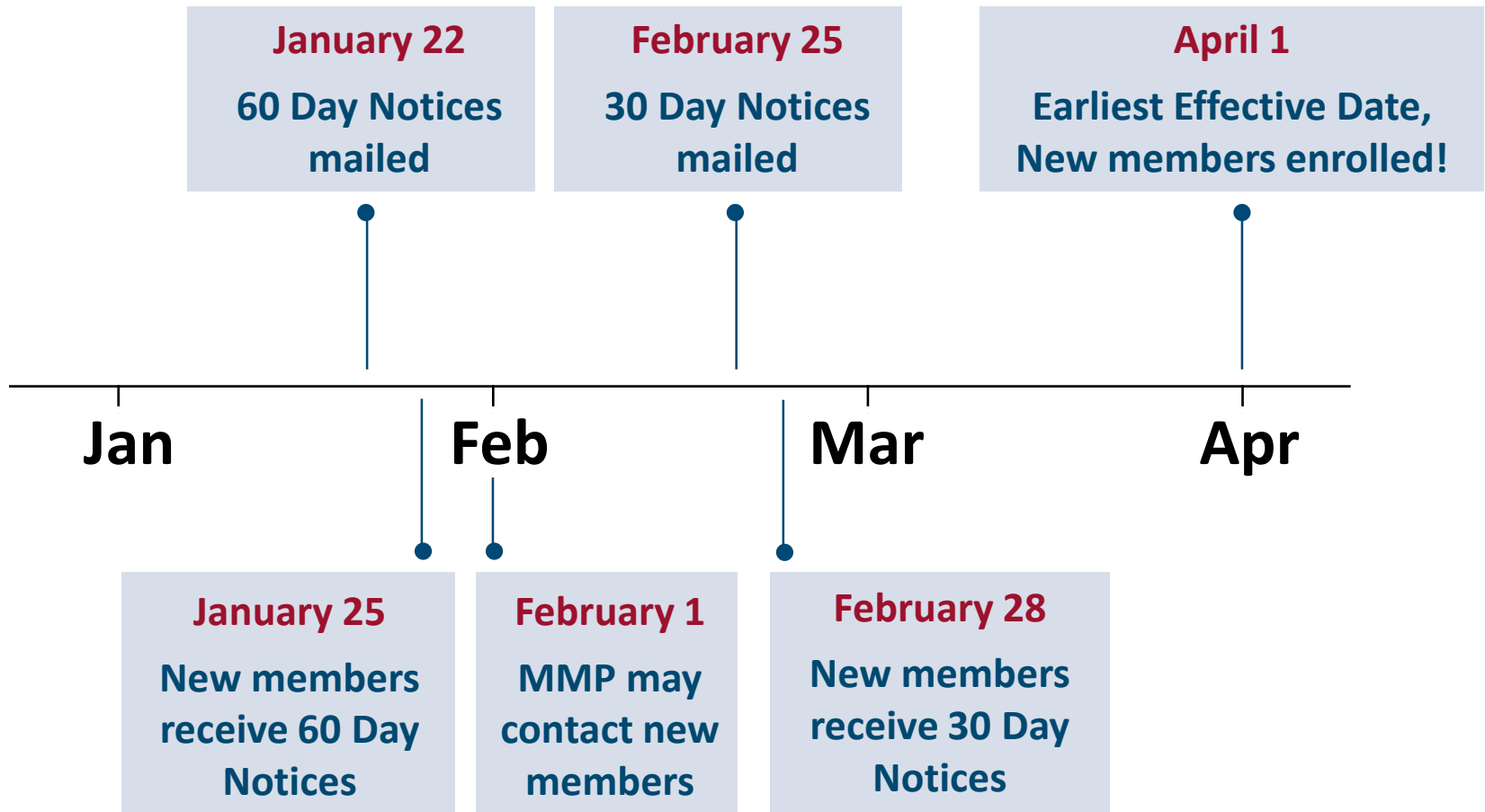
*Members with comprehensive insurance or who have previously been passively enrolled into a standalone prescription drug plan are excluded from passive enrollment.

Note: Aiken and Dorchester counties are eligible for “choice only” enrollment. In addition, the following counties are not participating in Healthy Connections Prime : Lancaster, Horry, Darlington, Sumter and York.

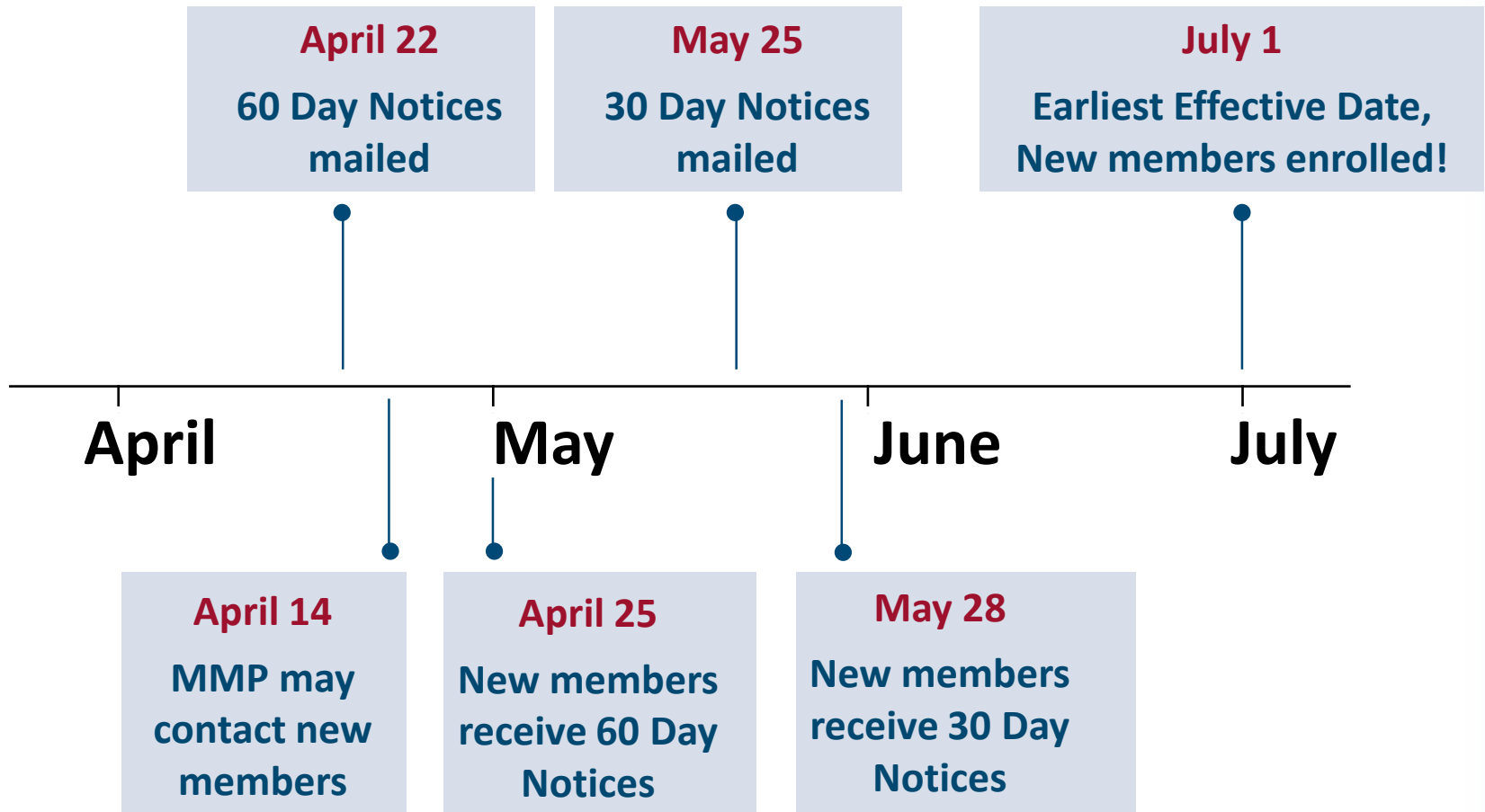
Passive Enrollment Intelligent Assignment Criteria



Wave 1 Communications to Members (2016)



Wave 2 Communications to Members (2016)



Sample 60 day passive enrollment notification to beneficiaries

SOUTH CAROLINA
Healthy Connections
MEDICAID


Nikki R. Haley GOVERNOR
 Christian L. Saura DIRECTOR
 P.O. Box 8206 > Columbia, SC 29202
 www.scdhhs.gov

<Member's Name> <Medicaid ID Number>
 <Address> <Date>
 <City State Zip>
 <City>, <State> <ZIP>

Dear <Name>:

IMPORTANT: YOU ARE BEING ENROLLED INTO A NEW HEALTH AND PRESCRIPTION DRUG PLAN FOR YOUR MEDICARE AND MEDICAID SERVICES

You are getting this letter because you have both Medicare and Medicaid and the way you get your health care is changing. You will soon be enrolled in a new program called Healthy Connections Prime that covers your Medicare, South Carolina Healthy Connections Medicaid and prescription drug benefits. This Healthy Connections Prime Medicare-Medicaid plan is designed to help your Medicare and Medicaid work better together, and includes new benefits and services that are not available to you now, such as no insurance premiums, no costs for doctor visits and hospital stays, a care team and a personalized care plan that fits your needs. We chose <Plan Name> for you because other members in your household are enrolled in this plan, your doctors work with this plan or this plan operates in your county.

Your new coverage starts <START DATE>

If you do nothing, you will be automatically enrolled in <Plan Name>. If you do not make another choice by <date = last calendar day of the month prior to Start Date>, your new coverage will start on <start date>. <Plan Name> will send you a new health and drug member ID card to use. This new card will replace the Medicare and Medicaid cards you use now.

For more information about <Plan Name> or to find out what benefits <Plan Name> covers, call South Carolina Healthy Connections Choices at (877) 552-4642 Monday-Friday from 8 a.m.–6 p.m. TTY users should call (877) 552-4670. This call is free.

You have other options

If you do not want to be enrolled in <Plan Name>, you have other options, including:

- Keep your current Medicare and Healthy Connections Medicaid coverage. Call South Carolina Healthy Connections Choices at (877) 552-4642 before <start date> and tell

South Carolina Department of Health and Human Services  *Better care. Better value. Better health.*

Members will now receive their prescription drug benefit from their new Medicare-Medicaid Plan.

- Enrollment triggers disenrollment for existing comprehensive insurance and stand-alone Medicare Part D plans.
- Medicare Part D plans will notify beneficiaries of their disenrollment from their Part D plans.
- Individuals cannot be in both a Medicare-Medicaid Plan and a stand-alone Medicare Part D.

Sample Part D disenrollment letter

Exhibit 10c: Confirmation of Disenrollment Due to Passive Enrollment into a Medicare-Medicaid Plan
 Referenced in section: 50.4.1

IMPORTANT INFORMATION ABOUT YOUR UPCOMING DISENROLLMENT FROM YOUR MEDICARE PRESCRIPTION DRUG PLAN

<Date>

Dear <Name of Member>:

Your state has enrolled you into a new plan that will provide all of your Medicare and Medicaid benefits, including prescription drugs. You should have already gotten a letter from your state telling you about the new plan.

This letter confirms your disenrollment from <PDP name>. You will continue to get your Medicare benefits from <PDP name> until <disenrollment effective date>. Beginning <day following disenrollment effective date>, your new plan will cover your health care.

You will be automatically enrolled in your new plan starting <day following disenrollment effective date>, so you don't have to do anything if you want to be a member of this new plan. In a few weeks, you should get a letter from your new plan confirming your enrollment. **There will be no gap in your Medicare and Medicaid coverage, including your prescription drug coverage.**

The letter from your new plan will tell you how to contact them. You can call your new plan with questions about your new coverage or to see if you can still see your current doctors in your new plan. You can also ask for lists of network primary care providers, covered drugs and pharmacies.

If you have questions about your disenrollment from <PDP name>, please call us at <phone number> (TTY users should call <TTY number>). We are open <days and hours of operation>. If you do not wish to be automatically enrolled in a new plan, call your state or call Medicare at 1-800-MEDICARE (1-800-633-4227), 24 hours a day, 7 days a week. Call 1-877-486-2048 if you use a TTY. You can also call 1-800-MEDICARE if you have questions about Medicare or need help with your Medicare options.

Thank you.

Outreach Activities and Member Experience

For Beneficiaries

- 60 day and 30 notices, April 1 earliest effective date
- SHIP counselors/advocates trained
- Member experience survey conducted Spring 2016

For Providers

- Additional resources available for providers
- Direct notification
- Medicare and Medicaid provider alerts

“I tell everyone about my plan. I love it, my doctor loves it, it’s great!”



After our member’s hospital stay, her Care Coordinator worked closely with the doctor to review her post-discharge care. During the discussion, the Care Coordinator discovered that she missed a gastroenterology appointment because of the hospital stay. The appointment was quickly rescheduled and during that appointment, some serious issues were identified. The Care Coordinator’s involvement helped our member uncover a serious issue and possibly avoid another hospital admission.



**RBHS and Healthy
Connections Prime**

Healthy Connections Prime and RBHS Provider Interaction

- **Providers will bill the MMP for services as RBHS services are carved into Healthy Connections Prime**
- **For clients with Healthy Connections Prime coverage, providers may work with the MMP's Care Coordinator to manage services**
- **RBHS Providers may participate in the member's Multi-Disciplinary Team (MDT)**

Partners and Resources

Healthy Connections Medicare-Medicaid Plans



www.mmp.absolutetotalcare.com

(855) 735-4398



www.advicarehealth.com

(844) 564-0143



www.firstchoicevipcareplus.com

(877) 703-9109



www.molinahealthcare.com/duals

(855) 701-4887

SC Thrive

- **Helps individuals interested in enrolling or who want to learn more information about Healthy Connections Prime.**
- **Available to conduct education sessions for beneficiaries, caregivers and advocates**



**SC Thrive Customer Service | 800-726-8774 (TTY/TDD: 711)
Monday to Friday, 8:30am – 5pm**

Healthy Connections Prime = Medicare + Medicaid

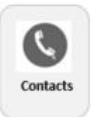
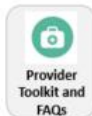
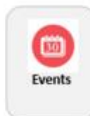


One plan
One card
No insurance premiums
No drug copays

[To Learn More or Enroll](#)

Healthy Connections Prime is a new program that combines all of the benefits of Medicare and South Carolina Healthy Connections Medicaid under a single Medicare-Medicaid plan to make it easier for members to get needed health services.

NAVIGATION



LATEST NEWS

Jan 7, 2015 | Press Release

Medicare-Medicaid Plan and Doctor Information

The health plan selection website for South Carolina Healthy Connections Choices now has...

Sep 2, 2014 | Press Release

Stakeholder Engagement: Nursing Facilities

Sep 2, 2014 | Press Release

Notification to Amend Medicaid Home and Community-Based Waivers

Sep 2, 2014 | Press Release

South Carolina Hospital Association Agency, Payer, and Provider Summit

Sep 16, 2013 | Press Release

SCDuE Weekly Update | September 16, 2013

SCDuE Weekly Update | September 16, 2013

[MORE](#)

MEMBER STORIES



"I like the personal touches my plan brings. I feel like I joined a family and not an insurance plan. My plan cares about their members."

[Read More](#)

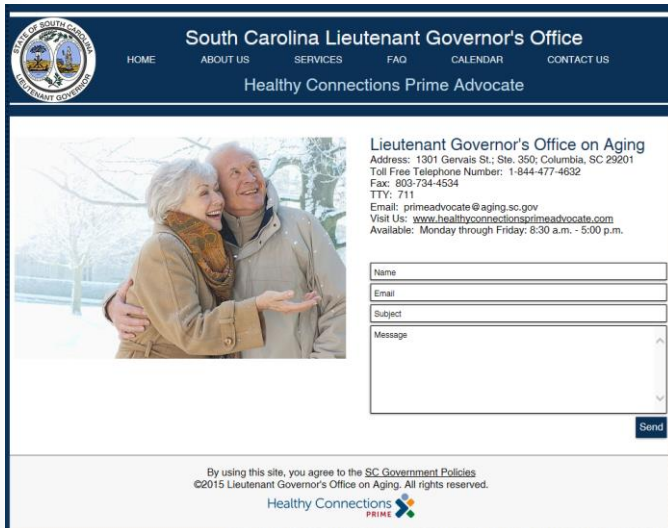
Please visit our
Website:

www.scdhhs.gov/prime

- FAQs
- Educational events
- Member stories
- Program data
- Latest updates
- Provider toolkit
- Additional materials
- Contacts

Healthy Connections Prime Advocate

- Services as the demonstration's ombudsman and serves as a consumer advocate
- Offers services such as:
 - Member assistance with billing and service related issues
 - Member education and support on appeals and grievances, including the State Fair Hear process



The screenshot shows the website for the South Carolina Lieutenant Governor's Office, specifically the Healthy Connections Prime Advocate section. The header includes the state seal and navigation links: HOME, ABOUT US, SERVICES, FAQ, CALENDAR, CONTACT US. The main content area features a photograph of an elderly couple and contact details for the Lieutenant Governor's Office on Aging: 1301 Gervais St., Ste. 350, Columbia, SC 29201; Toll Free Telephone Number: 1-844-477-4632; Fax: 803-734-4534; TTY: 711; Email: primeadvocate@aging.sc.gov; Visit Us: www.healthyconnectionsprimeadvocate.com; Available: Monday through Friday, 8:30 a.m. - 5:00 p.m. Below the contact info is a contact form with fields for Name, Email, Subject, and Message, and a Send button. At the bottom, there is a disclaimer: "By using this site, you agree to the SC Government Policies ©2015 Lieutenant Governor's Office on Aging. All rights reserved." and the Healthy Connections Prime logo.

Lt. Governor's Office on Aging
844-477-4632 (TTY/TDD: 711)
Monday to Friday, 8:30am – 5pm

<http://www.healthyconnectionsprimeadvocate.com/>



Questions

Thank you!