

Healthy Connections Prime Monthly Enrollment Dashboards

2020

January - December

Glossary of Key Terms

- **Active Enrollment:** Members with active coverage under Healthy Connections Prime. This does not include individuals who are enrolled but whose coverage has not started yet.
- **Cancellation:** A request by an individual to be removed from the program **before** the coverage effective date. For example: An individual has been passively enrolled into a Medicare-Medicaid Plan but they ask to leave the program before the coverage effective date. This request will delete the enrollment from all enrollment systems. This would be considered a cancellation.
- **Community:** At home or in a community-based setting, such as a Community Residential Care Facility (CRCF). Not in a nursing facility.
- **Community Residential Care Facility (CRCF):** CRCFs offer room and board and, unlike boarding homes, provide a degree of personal care for a period in excess of 24 consecutive hours for 2 or more persons, 18 years old or older.
- **Custodial Stay:** Member's stay in a nursing facility under an approved Medicaid Long Term Care Stay, and not for temporary rehabilitation.
- **Disenrollment:** A request by an individual to be removed from the program **after** the coverage effective date. For example: An individual has opted into a Medicare-Medicaid Plan but they ask to leave the program after the coverage effective date. This request will end the current enrollment coverage at the end of the month it is submitted. This would be considered a disenrollment.
- **Home and Community Based Services (HCBS) Waiver:** HCBS waivers provide services and supports for persons eligible for nursing home care stay longer in the community (home and community-based settings). Examples of such services and supports are: assistance getting dressed, home delivered meals, and wheelchair ramps. HCBS are offered through one of three waivers: Community Choices, HIV/AIDS, and Mechanical Ventilator Dependent. Plans also offer these services to non-waiver participants based on medical need.
- **Non-Custodial Stay:** A member's stay in a nursing facility for temporary rehabilitation and not for long term care.
- **Opt-in Enrollment:** A request by an eligible individual to actively join a Medicare-Medicaid Plan.
- **Opt-out:** A request by an individual to affirmatively decline passive enrollment into the Healthy Connections Prime program. Once an individual has opted out, the State must document this and exclude him/her from future passive enrollment processing. There are three scenarios where opt-out requests can be received:
 - The individual opts-in or is passively enrolled, and then opts out **before** the enrollment effective date. The State must **cancel** the enrollment along with opting the individual out of the program.
 - The individual opts-in or is passively enrolled, and then opts out **on or after** the enrollment effective date. The State must **disenroll** the individual along with opting the individual out of the program.
 - An individual **has not opted-in** to the program and he/she **has not been passively enrolled** but he/she requests to opt-out. The State must opt the individual out of passive enrollment into the program.
- **Passive Enrollment:** An auto assignment into a Medicare-Medicaid Plan for an eligible individual who has not actively chosen to join the program. Please note that if an individual does not take action to end their coverage, their membership in the program will be considered voluntary.
- **Plan:** A Medicare-Medicaid Plan (MMP) that is offering coverage under Healthy Connections Prime.

For More Information

Please visit our website at <http://www.scdhhs.gov/prime> or call the SC Thrive Customer Service Center at (800) 726-8774, Monday-Friday, 8:30 a.m. – 5 p.m. TTY users call 711. This call is free.

Table of Contents

<u>Glossary of Key Terms</u>	3
<u>January 2020</u>	5
<u>February 2020</u>	10
<u>March 2020</u>	15
<u>April 2020</u>	20
<u>May 2020</u>	25
<u>June 2020</u>	30
<u>July 2020</u>	35
<u>August 2020</u>	40
<u>September 2020</u>	45
<u>October 2020</u>	50
<u>November 2020</u>	56
<u>December 2020</u>	61

Glossary of Key Terms

Glossary of Key Terms

- **Active Enrollment:** Members with active coverage under Healthy Connections Prime. This does not include individuals who are enrolled but whose coverage has not started yet.
- **Cancellation:** A request by an individual to be removed from the program **before** the coverage effective date. For example: An individual has been passively enrolled into a Medicare-Medicaid Plan but they ask to leave the program before the coverage effective date. This request will delete the enrollment from all enrollment systems. This would be considered a cancellation.
- **Community:** At home or in a community-based setting, such as a Community Residential Care Facility (CRCF). Not in a nursing facility.
- **Community Residential Care Facility (CRCF):** CRCFs offer room and board and, unlike boarding homes, provide a degree of personal care for a period in excess of 24 consecutive hours for 2 or more persons, 18 years old or older.
- **Custodial Stay:** Member's stay in a nursing facility under an approved Medicaid Long Term Care Stay, and not for temporary rehabilitation.
- **Disenrollment:** A request by an individual to be removed from the program **after** the coverage effective date. For example: An individual has opted into a Medicare-Medicaid Plan but they ask to leave the program after the coverage effective date. This request will end the current enrollment coverage at the end of the month it is submitted. This would be considered a disenrollment.
- **Home and Community Based Services (HCBS) Waiver:** HCBS waivers provide services and supports for persons eligible for nursing home care stay longer in the community (home and community-based settings). Examples of such services and supports are: assistance getting dressed, home delivered meals, and wheelchair ramps. HCBS are offered through one of three waivers: Community Choices, HIV/AIDS, and Mechanical Ventilator Dependent. Plans also offer these services to non-waiver participants based on medical need.
- **Non-Custodial Stay:** A member's stay in a nursing facility for temporary rehabilitation and not for long term care.
- **Opt-in Enrollment:** A request by an eligible individual to actively join a Medicare-Medicaid Plan.
- **Opt-out:** A request by an individual to affirmatively decline passive enrollment into the Healthy Connections Prime program. Once an individual has opted out, the State must document this and exclude him/her from future passive enrollment processing. There are three scenarios where opt-out requests can be received:
 - The individual opts-in or is passively enrolled, and then opts out **before** the enrollment effective date. The State must **cancel** the enrollment along with opting the individual out of the program.
 - The individual opts-in or is passively enrolled, and then opts out **on or after** the enrollment effective date. The State must **disenroll** the individual along with opting the individual out of the program.
 - An individual **has not opted-in** to the program and he/she **has not been passively enrolled** but he/she requests to opt-out. The State must opt the individual out of passive enrollment into the program.
- **Passive Enrollment:** An auto assignment into a Medicare-Medicaid Plan for an eligible individual who has not actively chosen to join the program. Please note that if an individual does not take action to end their coverage, their membership in the program will be considered voluntary.
- **Plan:** A Medicare-Medicaid Plan (MMP) that is offering coverage under Healthy Connections Prime.

For More Information

Please visit our website at <http://www.scdhhs.gov/prime> or call the SC Thrive Customer Service Center at (800) 726-8774, Monday-Friday, 8:30 a.m. – 5 p.m. TTY users call 711. This call is free.

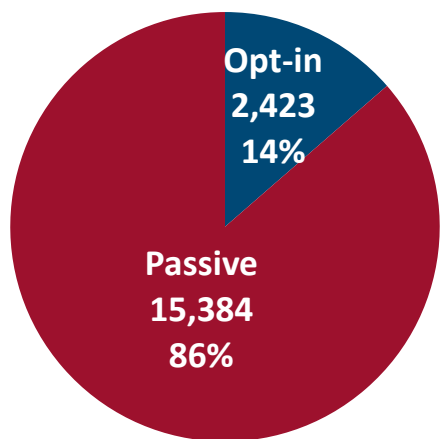
January 2020

January 2020 Active Enrollments

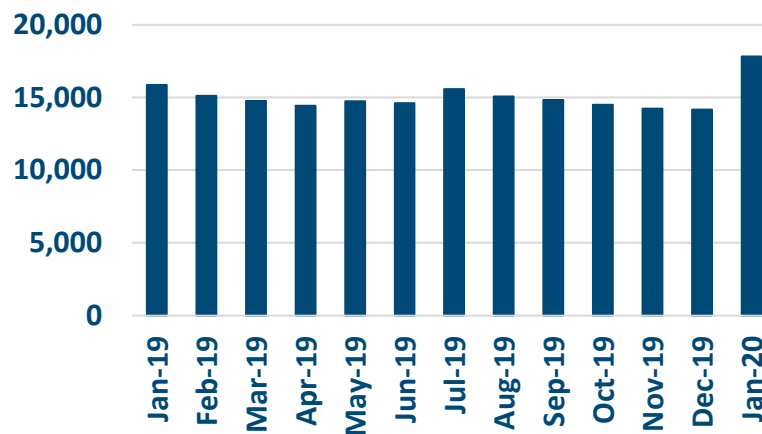


Enrollment Breakdown by Source

OPT-IN VS. PASSIVE ENROLLMENTS



TOTAL ENROLLMENT BY MONTH*



January Active Enrollments
17,807

December Active Enrollments
14,158

Monthly Enrollment Change
26%

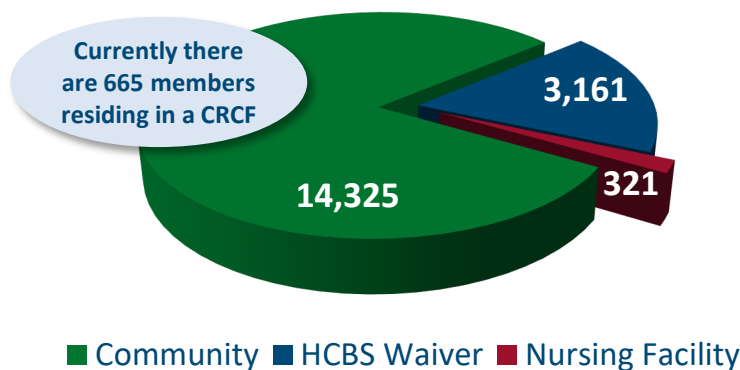
Nursing Facility Usage and Enrollee Demographics

NURSING FACILITY UTILIZATION

Type of Stay	Total
Custodial	321
Non-Custodial**	168
Total	489

** Portions of this chart are self-reported MMP data.

ENROLLEE POPULATION BREAKDOWN



Member Stories

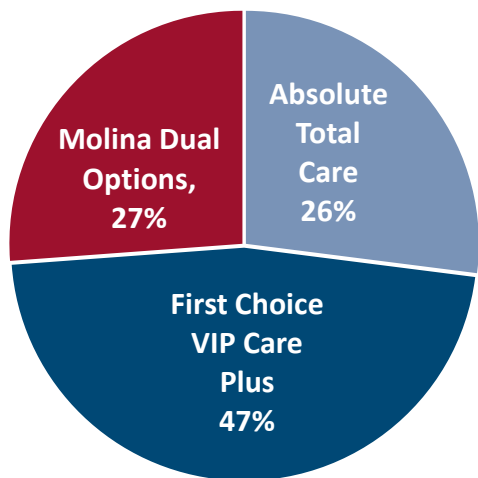
“Great things get done when people come together as one.”

Visit our [Testimonials](#) page and read stories about our some of our members’ experiences in Healthy Connections Prime, including how a member was discharged from the ER on a Friday after fracturing his foot and urgently needed a wheelchair. His MMP worked quickly with the doctor and a durable medical equipment provider to secure a wheelchair before the weekend began.

January 2020 Active Enrollments

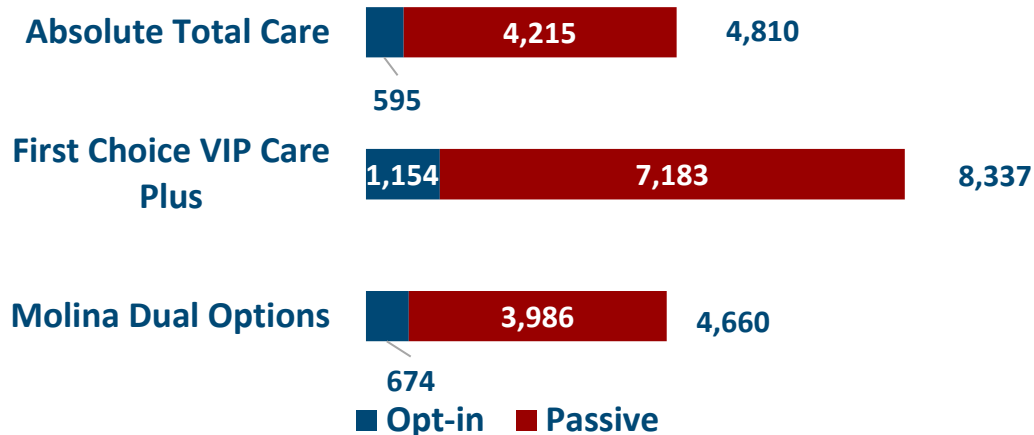


Enrollment by Plan

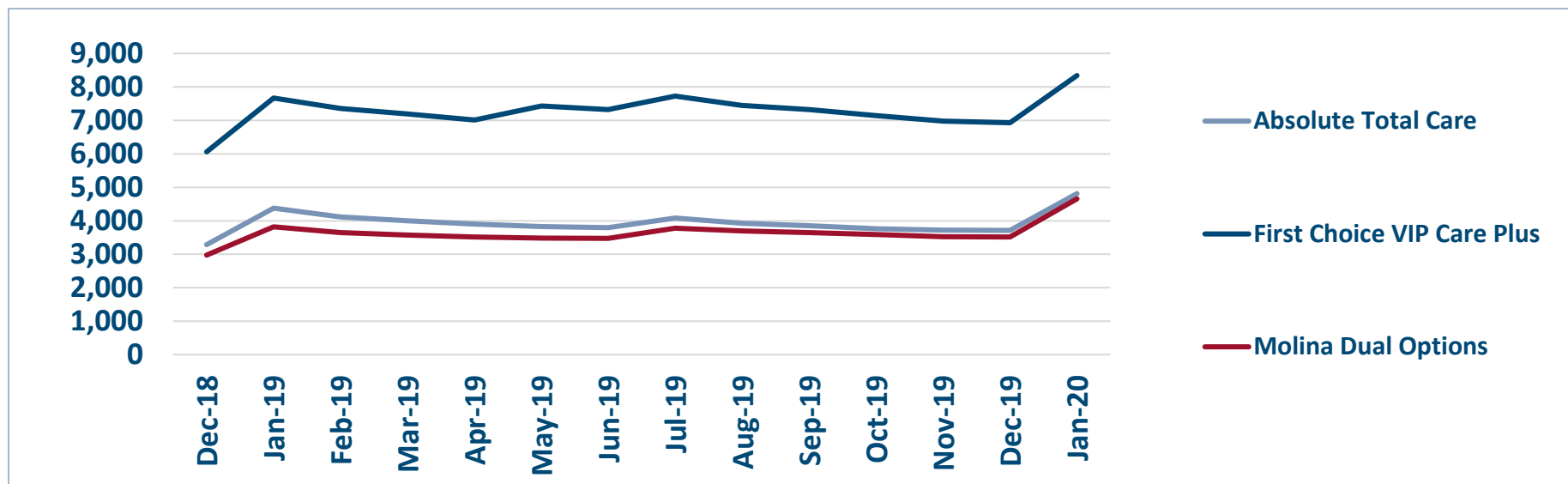


ENROLLMENT SOURCE BY PLAN

Total: 17,807



Monthly Enrollment By Plan



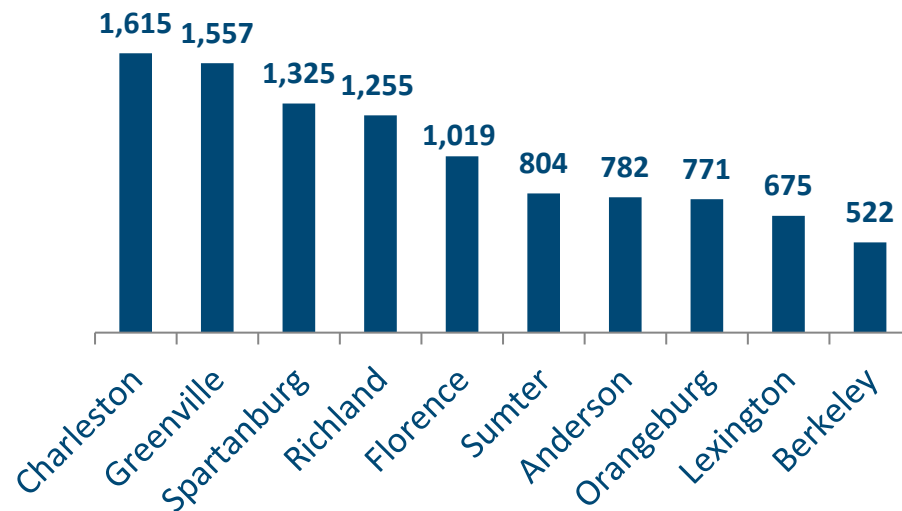
Sources: SCDHHS Medicaid Management Information System, CMS Monthly Full Enrollment Data File (Updated January 2020)

Healthy Connections Prime Active Enrollment

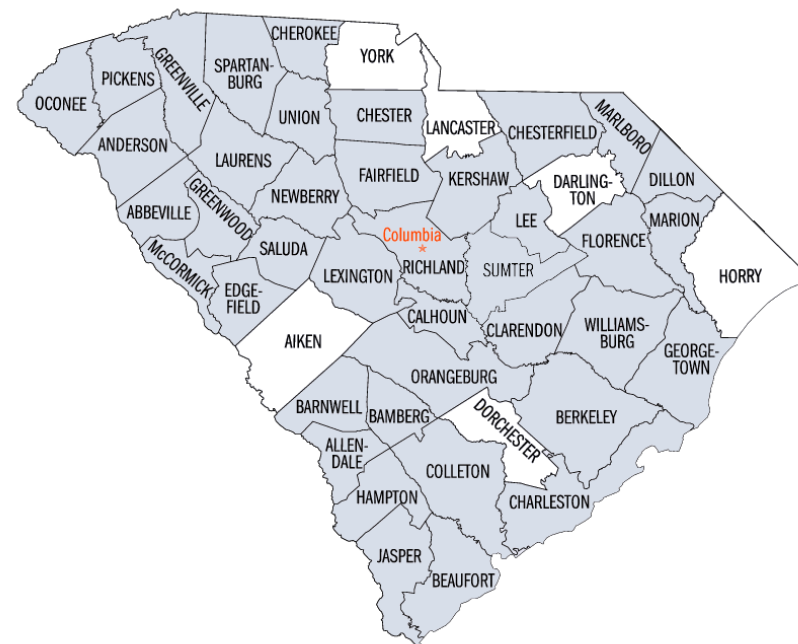
Jan 2020

County	Absolute Total Care	First Choice VIP Care Plus	Molina Dual Options	County Total
Abbeville	31	74	43	148
Aiken	0	0	0	0
Allendale	28	46	32	106
Anderson	96	574	112	782
Bamberg	59	54	49	162
Barnwell	48	53	59	160
Beaufort	175	223	0	398
Berkeley	263	259	0	522
Calhoun	27	34	49	110
Charleston	543	569	503	1615
Cherokee	0	308	0	308
Chester	56	66	80	202
Chesterfield	98	104	98	300
Clarendon	115	133	50	298
Colleton	101	97	131	329
Darlington	0	0	0	0
Dillon	90	99	102	291
Dorchester	0	0	0	0
Edgefield	32	47	59	138
Fairfield	47	80	74	201
Florence	309	359	351	1019
Georgetown	163	216	51	430
Greenville	481	545	531	1557
Greenwood	32	254	35	321
Hampton	72	72	53	197
Horry	0	0	0	0
Jasper	71	56	22	149
Kershaw	79	136	145	360
Lancaster	0	0	0	0
Laurens	94	155	119	368
Lee	55	79	74	208
Lexington	155	204	316	675
Marion	79	83	77	239
Marlboro	13	32	25	70
McCormick	93	103	135	331
Newberry	43	78	88	209
Oconee	0	303	53	356
Orangeburg	308	359	104	771
Pickens	127	206	100	433
Richland	362	442	451	1255
Saluda	28	45	39	112
Spartanburg	284	753	288	1325
Sumter	0	804	0	804
Union	28	97	38	163
Williamsburg	125	136	124	385
York	0	0	0	0
Total	4,810	8,337	4,660	17,807

TOP 10 COUNTIES BY ENROLLMENT



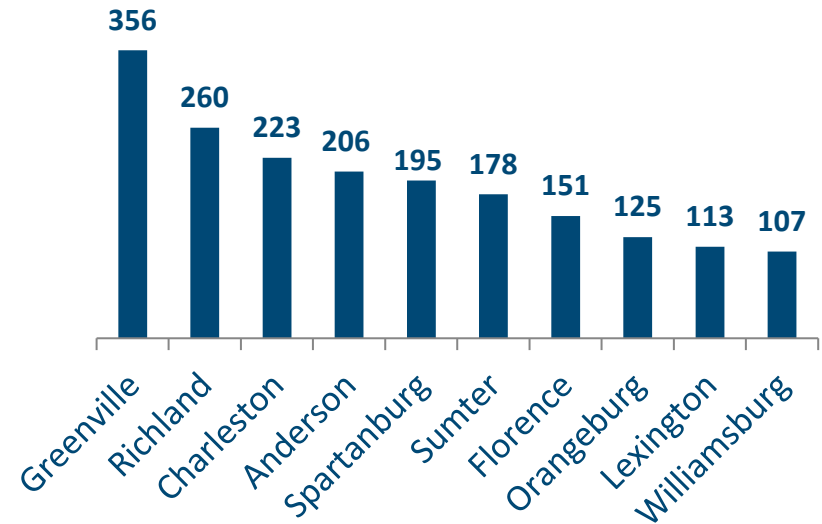
HEALTHY CONNECTIONS PRIME COUNTY PARTICIPATION



Sources: SCDHHS Medicaid Management Information System, CMS Monthly Full Enrollment Data File (Updated January 2020)

Healthy Connections Prime HCBS Waiver Enrollment				Jan 2020
County	Absolute Total Care	First Choice VIP Care Plus	Molina Dual Options	County Total
Abbeville	7	17	8	32
Aiken	0	0	0	0
Allendale	6	4	10	20
Anderson	18	150	38	206
Bamberg	12	11	5	28
Barnwell	6	4	12	22
Beaufort	17	37	0	54
Berkeley	33	37	0	70
Calhoun	1	8	10	19
Charleston	58	77	88	223
Cherokee	0	32	0	32
Chester	2	13	11	26
Chesterfield	6	11	10	27
Clarendon	33	37	12	82
Colleton	10	17	13	40
Darlington	0	0	0	0
Dillon	10	20	17	47
Dorchester	0	0	0	0
Edgefield	7	3	7	17
Fairfield	14	19	16	49
Florence	45	56	50	151
Georgetown	37	36	9	82
Greenville	104	129	123	356
Greenwood	5	33	7	45
Hampton	9	20	11	40
Horry	0	0	0	0
Jasper	8	7	2	17
Kershaw	9	18	24	51
Lancaster	0	0	0	0
Laurens	14	20	14	48
Lee	8	24	10	42
Lexington	23	39	51	113
Marion	19	24	30	73
Marlboro	6	7	8	21
McCormick	5	4	6	15
Newberry	4	13	13	30
Oconee	0	66	10	76
Orangeburg	49	57	19	125
Pickens	29	50	20	99
Richland	76	93	91	260
Saluda	6	4	8	18
Spartanburg	43	121	31	195
Sumter	0	177	1	178
Union	4	19	2	25
Williamsburg	35	32	40	107
York	0	0	0	0
Total	778	1,546	837	3,161

CURRENT TOP 10 COUNTIES BY WAIVER ENROLLMENT



HCBS WAIVER UTILIZATION

Waiver Service	Total
Community Choices	3,118
HIV/AIDS	42
Mechanical Ventilator Dependent	1
Total	3,161

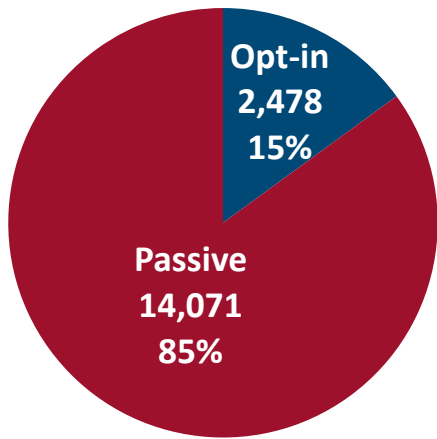
February 2020

February 2020 Active Enrollments

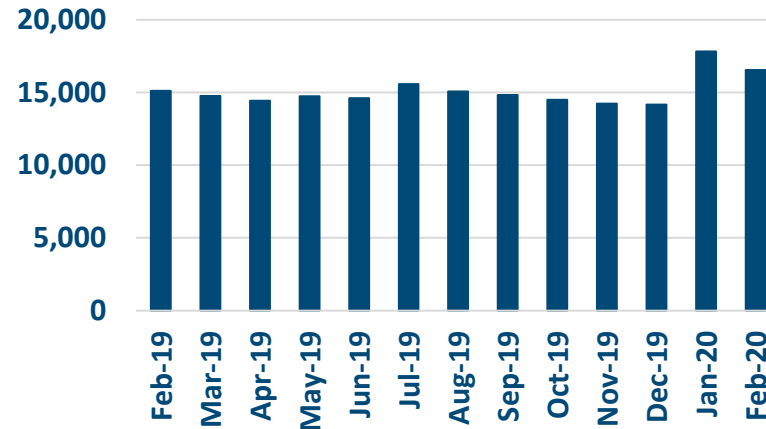


Enrollment Breakdown by Source

OPT-IN VS. PASSIVE ENROLLMENTS



TOTAL ENROLLMENT BY MONTH*



February Active Enrollments
16,549

January Active Enrollments
17,807

Monthly Enrollment Change
-7%

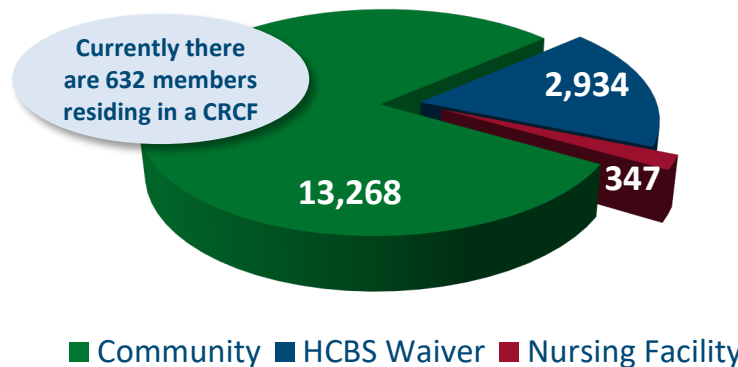
Nursing Facility Usage and Enrollee Demographics

NURSING FACILITY UTILIZATION

Type of Stay	Total
Custodial	347
Non-Custodial**	241
Total	588

** Portions of this chart are self-reported MMP data.

ENROLLEE POPULATION BREAKDOWN



2019 Program Data

The full 12 months of Enrollment Dashboards and Eligible Beneficiaries data for 2019 has been posted to our [Program Data](#) page. Visit the page to access these files and other useful program information, such as our county coverage map and our program updates.

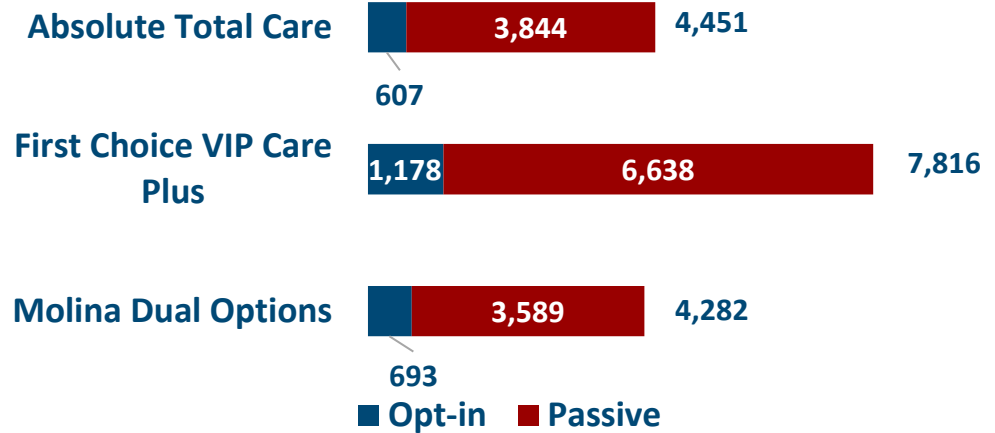
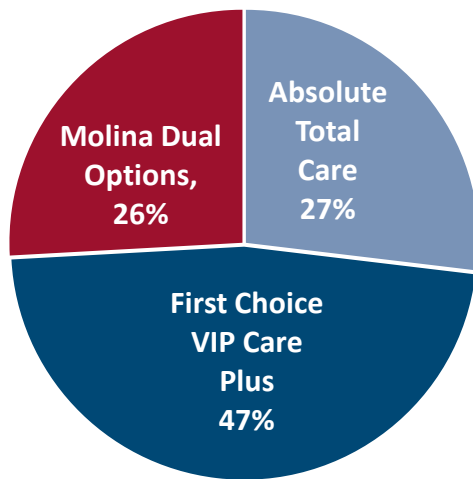
February 2020 Active Enrollments



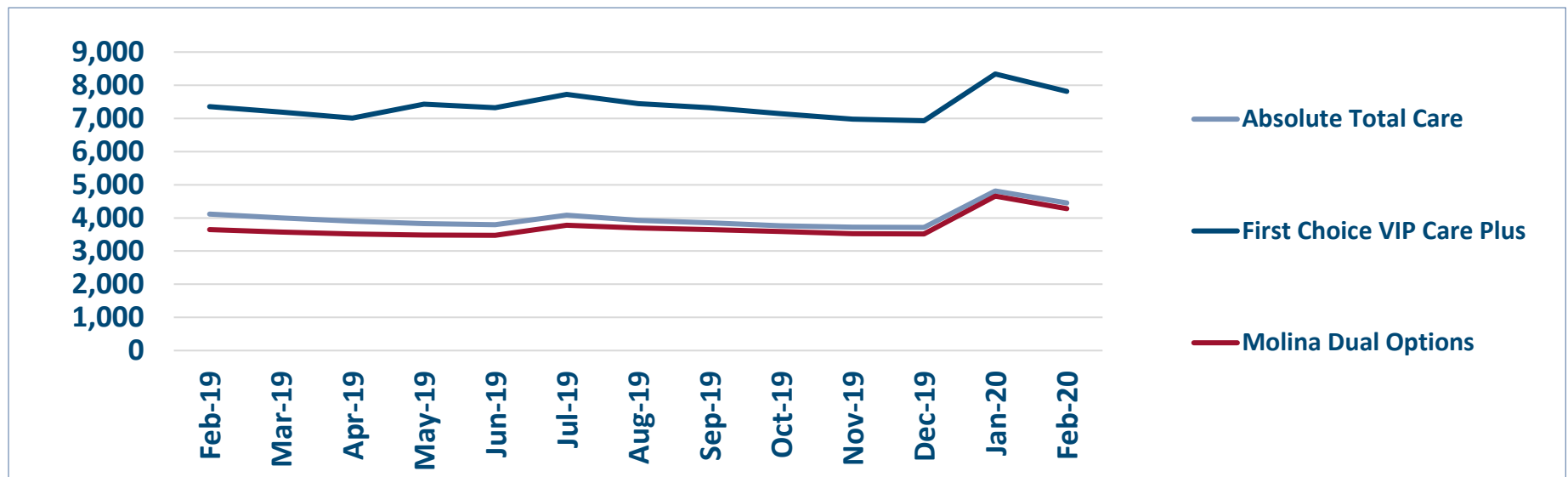
Enrollment by Plan

ENROLLMENT SOURCE BY PLAN

Total: 16,549



Monthly Enrollment By Plan



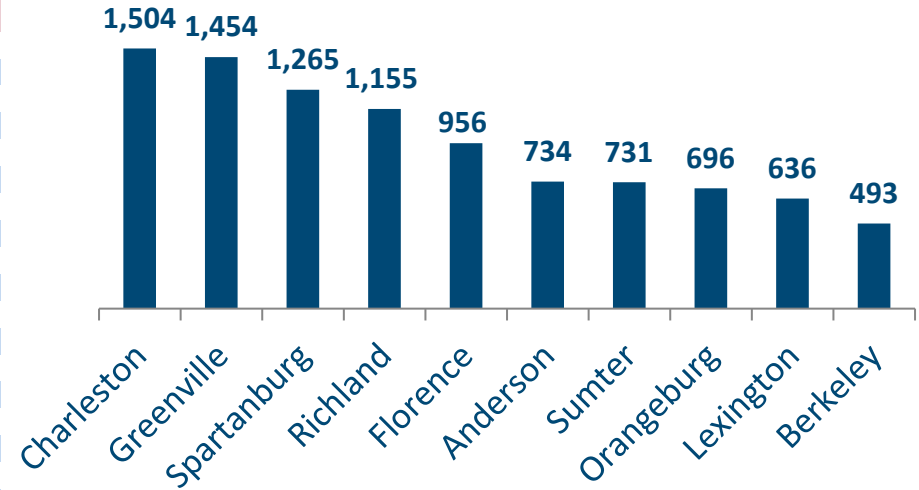
Sources: SCDHHS Medicaid Management Information System, CMS Monthly Full Enrollment Data File (Updated February 2020)

Healthy Connections Prime Active Enrollment

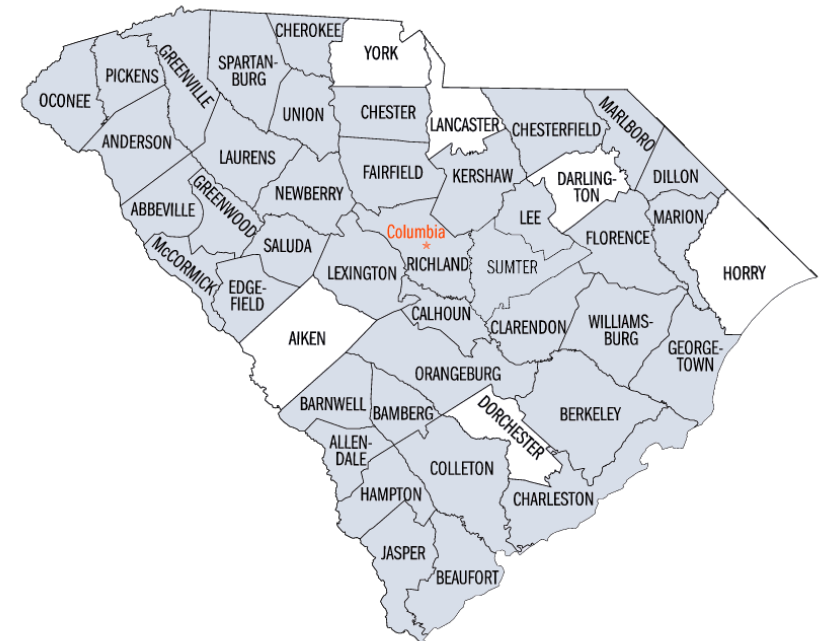
Feb 2020

County	Absolute Total Care	First Choice VIP Care Plus	Molina Dual Options	County Total
Abbeville	31	68	41	140
Aiken	0	0	0	0
Allendale	24	43	29	96
Anderson	80	559	95	734
Bamberg	52	47	48	147
Barnwell	44	50	56	150
Beaufort	163	209	0	372
Berkeley	250	243	0	493
Calhoun	23	32	45	100
Charleston	512	531	461	1,504
Cherokee	0	300	0	300
Chester	52	60	74	186
Chesterfield	95	99	98	292
Clarendon	107	125	40	272
Colleton	91	80	111	282
Darlington	0	0	0	0
Dillon	87	91	99	277
Dorchester	0	0	0	0
Edgefield	29	40	52	121
Fairfield	46	71	69	186
Florence	289	339	328	956
Georgetown	158	203	43	404
Greenville	451	510	493	1,454
Greenwood	28	251	27	306
Hampton	58	70	50	178
Horry	0	0	0	0
Jasper	64	47	19	130
Kershaw	73	126	136	335
Lancaster	0	0	0	0
Laurens	93	151	116	360
Lee	51	70	68	189
Lexington	143	193	300	636
McCormick	83	97	131	311
Marion	73	76	72	221
Marlboro	11	26	24	61
Newberry	37	73	81	191
Oconee	0	294	49	343
Orangeburg	279	333	84	696
Pickens	115	186	90	391
Richland	335	411	409	1,155
Saluda	27	41	36	104
Spartanburg	265	732	268	1,265
Sumter	0	731	0	731
Union	27	89	34	150
Williamsburg	105	119	106	330
York	0	0	0	0
Total	4,451	7,816	4,282	16,549

TOP 10 COUNTIES BY ENROLLMENT



HEALTHY CONNECTIONS PRIME COUNTY PARTICIPATION



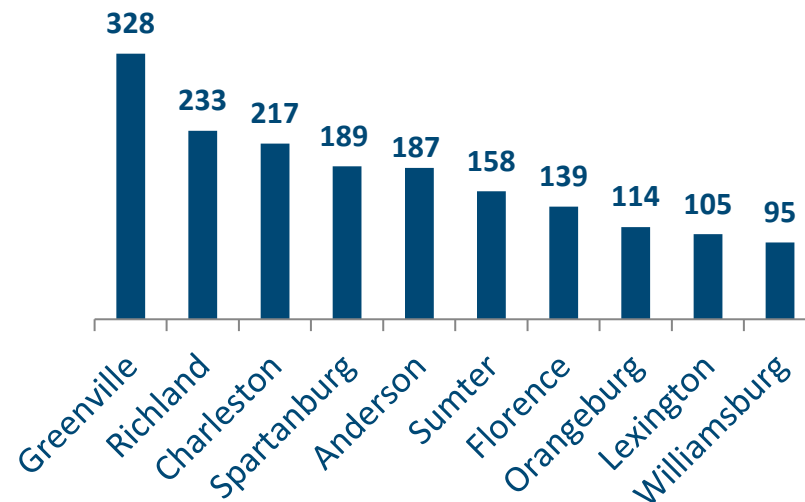
Sources: SCDHHS Medicaid Management Information System, CMS Monthly Full Enrollment Data File (Updated February 2020)

Healthy Connections Prime HCBS Waiver Enrollment

Feb 2020

County	Absolute Total Care	First Choice VIP Care Plus	Molina Dual Options	County Total
Abbeville	7	16	6	29
Aiken	0	0	0	0
Allendale	6	4	9	19
Anderson	11	146	30	187
Bamberg	10	8	6	24
Barnwell	6	3	12	21
Beaufort	17	34	0	51
Berkeley	33	37	0	70
Calhoun	1	7	9	17
Charleston	56	74	87	217
Cherokee	0	31	0	31
Chester	2	12	10	24
Chesterfield	5	10	9	24
Clarendon	30	34	10	74
Colleton	8	14	11	33
Darlington	0	0	0	0
Dillon	10	19	16	45
Dorchester	0	0	0	0
Edgefield	6	2	5	13
Fairfield	13	16	15	44
Florence	41	53	45	139
Georgetown	35	33	8	76
Greenville	97	123	108	328
Greenwood	6	35	5	46
Hampton	8	19	11	38
Horry	0	0	0	0
Jasper	7	7	2	16
Kershaw	10	18	24	52
Lancaster	0	0	0	0
Laurens	17	20	13	50
Lee	8	20	10	38
Lexington	21	36	48	105
Marion	19	22	33	74
Marlboro	6	7	7	20
McCormick	4	3	5	12
Newberry	3	12	13	28
Oconee	0	65	10	75
Orangeburg	42	54	18	114
Pickens	24	44	18	86
Richland	69	84	80	233
Saluda	5	3	6	14
Spartanburg	38	121	30	189
Sumter	0	158	0	158
Union	4	19	2	25
Williamsburg	32	32	31	95
York	0	0	0	0
Total	717	1,455	762	2,934

CURRENT TOP 10 COUNTIES BY WAIVER ENROLLMENT



HCBS WAIVER UTILIZATION

Waiver Service	Total
Community Choices	2,893
HIV/AIDS	40
Mechanical Ventilator Dependent	1
Total	2,934

Sources: SCDHHS Medicaid Management Information System, CMS Monthly Full Enrollment Data File (Updated February 2020)

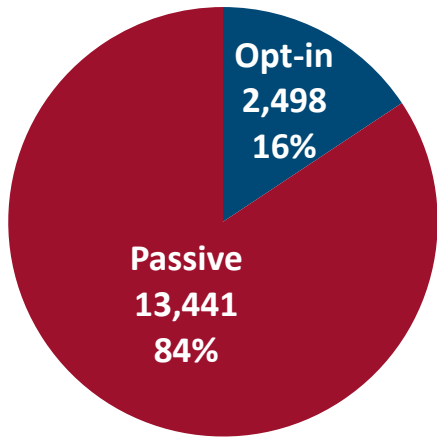
March 2020

March 2020 Active Enrollments

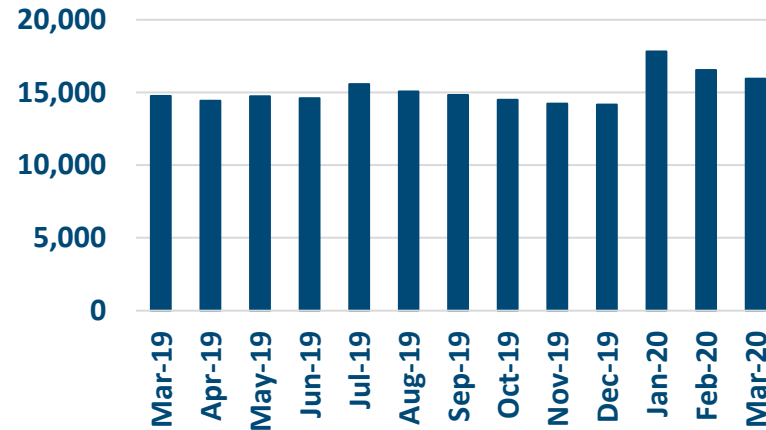


Enrollment Breakdown by Source

OPT-IN VS. PASSIVE ENROLLMENTS



TOTAL ENROLLMENT BY MONTH*



March Active Enrollments
15,939

February Active Enrollments
16,549

Monthly Enrollment Change
-4%

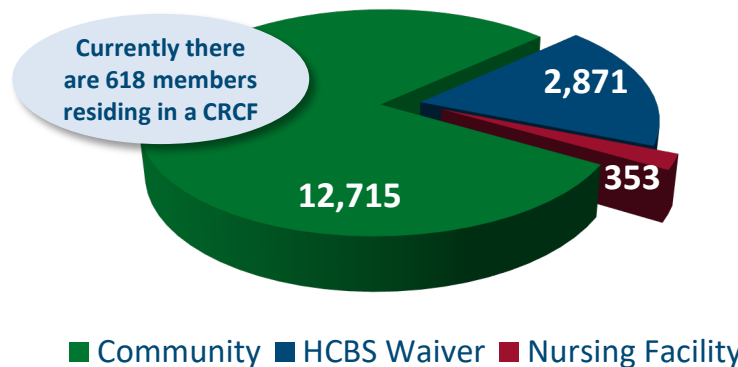
Nursing Facility Usage and Enrollee Demographics

NURSING FACILITY UTILIZATION

Type of Stay	Total
Custodial	353
Non-Custodial**	212
Total	565

** Portions of this chart are self-reported MMP data.

ENROLLEE POPULATION BREAKDOWN



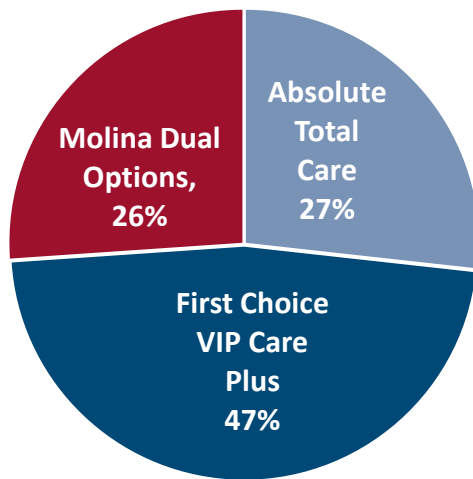
New County Expansions

Healthy Connections Prime is now available for enrollment in Aiken and Dorchester Counties for Select Health. Beneficiaries can call Healthy Connections Choices at 1-877-552-4642 for details on enrollment options.

March 2020 Active Enrollments

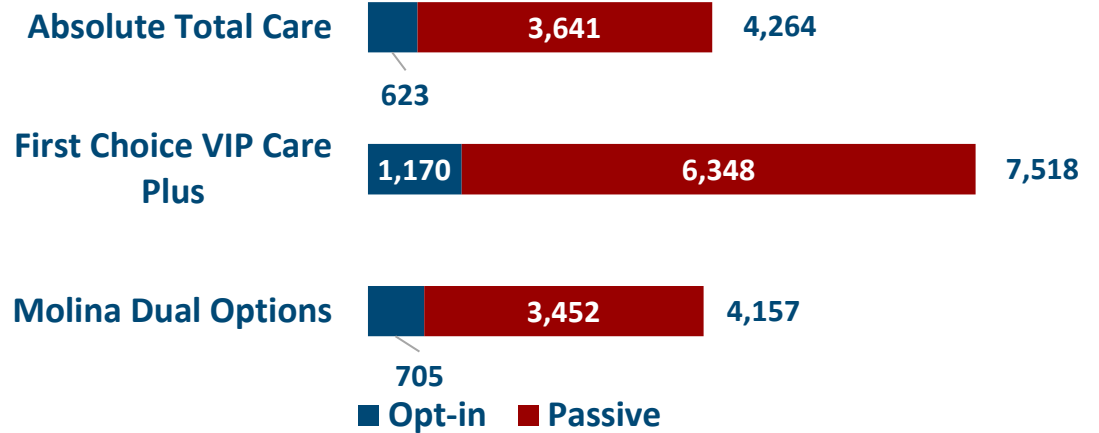


Enrollment by Plan

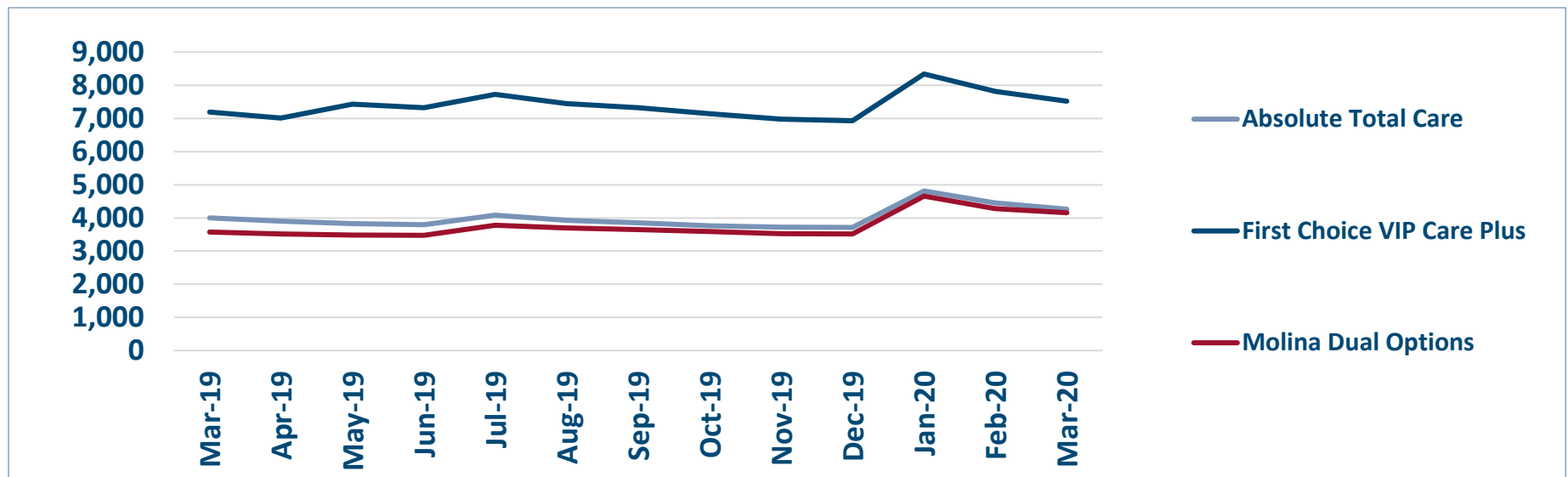


ENROLLMENT SOURCE BY PLAN

Total: 15,939



Monthly Enrollment By Plan

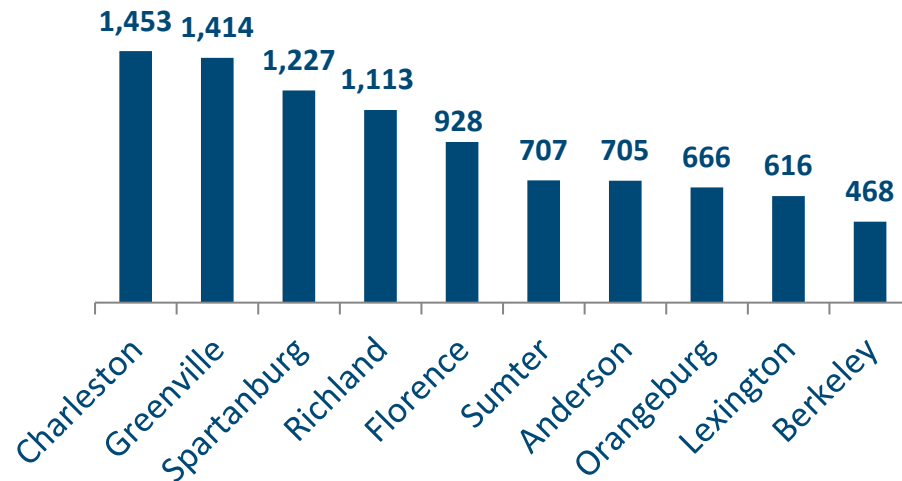


Healthy Connections Prime Active Enrollment

Mar 2020

County	Absolute Total Care	First Choice VIP Care Plus	Molina Dual Options	County Total
Abbeville	32	69	38	139
Aiken	0	0	0	0
Allendale	23	42	30	95
Anderson	73	541	91	705
Bamberg	48	44	46	138
Barnwell	43	49	56	148
Beaufort	150	198	0	348
Berkeley	233	235	0	468
Calhoun	20	28	40	88
Charleston	493	512	448	1,453
Cherokee	0	282	0	282
Chester	52	54	71	177
Chesterfield	94	93	97	284
Clarendon	101	120	39	260
Colleton	83	77	109	269
Darlington	0	0	0	0
Dillon	83	85	98	266
Dorchester	0	0	0	0
Edgefield	29	39	51	119
Fairfield	40	71	65	176
Florence	280	328	320	928
Georgetown	154	199	43	396
Greenville	435	496	483	1,414
Greenwood	28	245	26	299
Hampton	58	63	44	165
Horry	0	0	0	0
Jasper	63	47	19	129
Kershaw	69	127	125	321
Lancaster	0	0	0	0
Laurens	79	146	115	340
Lee	49	68	68	185
Lexington	138	189	289	616
McCormick	83	89	124	296
Marion	73	73	74	220
Marlboro	9	23	19	51
Newberry	35	71	76	182
Oconee	0	280	49	329
Orangeburg	266	315	85	666
Pickens	113	179	89	381
Richland	323	396	394	1,113
Saluda	25	41	36	102
Spartanburg	259	702	266	1,227
Sumter	0	707	0	707
Union	26	84	34	144
Williamsburg	102	111	100	313
York	0	0	0	0
Total	4,264	7,518	4,157	15,939

TOP 10 COUNTIES BY ENROLLMENT



HEALTHY CONNECTIONS PRIME COUNTY PARTICIPATION



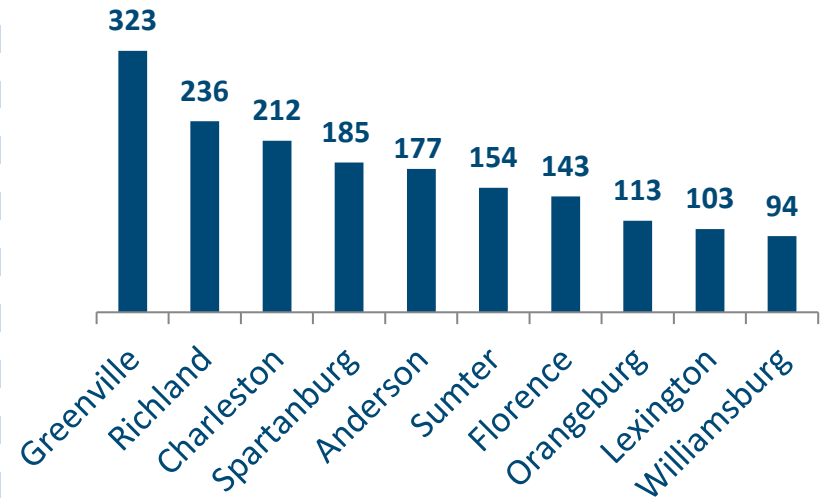
Sources: SCDHHS Medicaid Management Information System, CMS Monthly Full Enrollment Data File (Updated March 2020)

Healthy Connections Prime HCBS Waiver Enrollment

Mar 2020

County	Absolute Total Care	First Choice VIP Care Plus	Molina Dual Options	County Total
Abbeville	7	16	6	29
Aiken	0	0	1	1
Allendale	6	7	9	22
Anderson	10	140	27	177
Bamberg	10	8	6	24
Barnwell	6	3	13	22
Beaufort	17	29	0	46
Berkeley	28	37	0	65
Calhoun	0	6	9	15
Charleston	56	73	83	212
Cherokee	0	34	0	34
Chester	3	10	10	23
Chesterfield	5	10	10	25
Clarendon	27	30	7	64
Colleton	9	12	11	32
Darlington	0	0	0	0
Dillon	10	19	18	47
Dorchester	0	0	0	0
Edgefield	6	2	5	13
Fairfield	11	16	13	40
Florence	41	55	47	143
Georgetown	35	33	9	77
Greenville	93	123	107	323
Greenwood	6	33	5	44
Hampton	10	16	9	35
Horry	0	0	0	0
Jasper	6	8	2	16
Kershaw	9	14	21	44
Lancaster	0	0	0	0
Laurens	16	22	12	50
Lee	7	19	10	36
Lexington	18	35	50	103
Marion	19	23	30	72
Marlboro	7	6	7	20
McCormick	3	2	5	10
Newberry	4	14	11	29
Oconee	0	67	10	77
Orangeburg	42	53	18	113
Pickens	22	44	17	83
Richland	72	86	78	236
Saluda	4	3	6	13
Spartanburg	39	116	30	185
Sumter	0	154	0	154
Union	3	17	3	23
Williamsburg	32	32	30	94
York	0	0	0	0
Total	699	1,427	745	2,871

CURRENT TOP 10 COUNTIES BY WAIVER ENROLLMENT



HCBS WAIVER UTILIZATION

Waiver Service	Total
Community Choices	2,828
HIV/AIDS	42
Mechanical Ventilator Dependent	1
Total	2,871

Sources: SCDHHS Medicaid Management Information System, CMS Monthly Full Enrollment Data File (Updated March 2020)

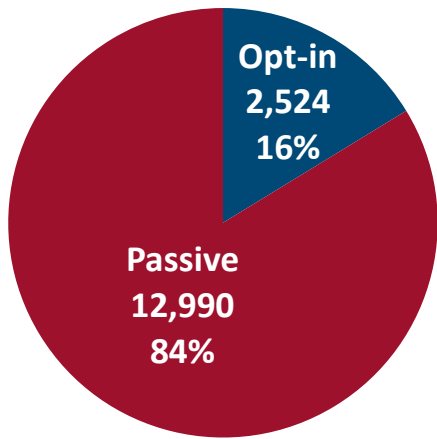
April 2020

April 2020 Active Enrollments

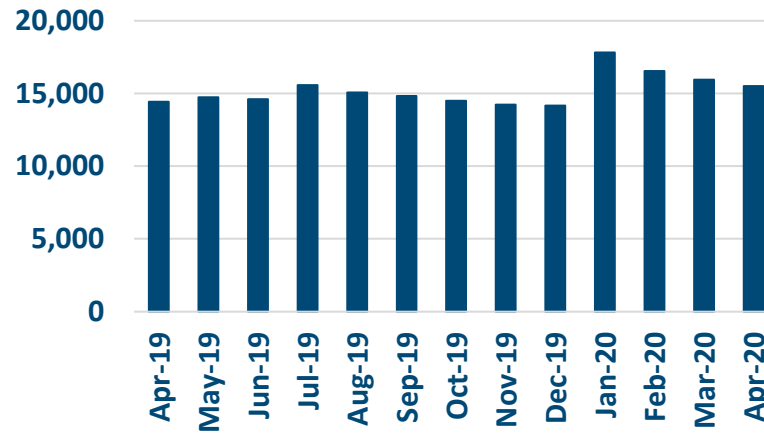


Enrollment Breakdown by Source

OPT-IN VS. PASSIVE ENROLLMENTS



TOTAL ENROLLMENT BY MONTH*



April Active Enrollments
15,514

March Active Enrollments
15,939

Monthly Enrollment Change
-3%

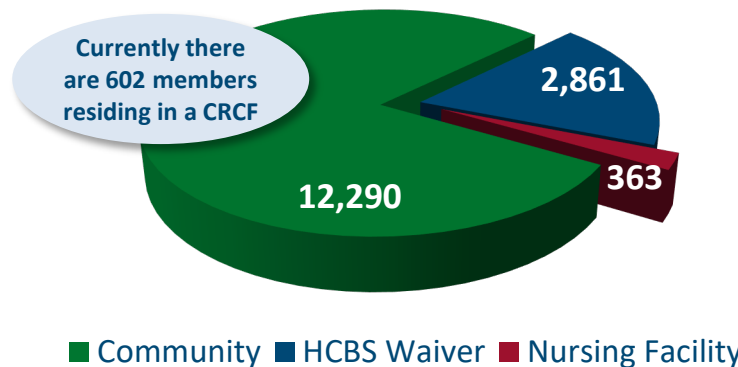
Nursing Facility Usage and Enrollee Demographics

NURSING FACILITY UTILIZATION

Type of Stay	Total
Custodial	363
Non-Custodial**	234
Total	597

** Portions of this chart are self-reported MMP data.

ENROLLEE POPULATION BREAKDOWN



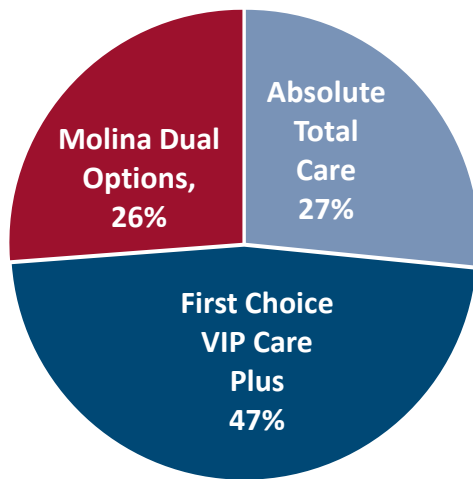
COVID-19 Information

Providers can visit <https://msp.scdhhs.gov/covid19> for more information on temporary provider policy changes that give providers needed flexibility to help ensure members continue to have access to care while supporting important social distancing measures.

April 2020 Active Enrollments

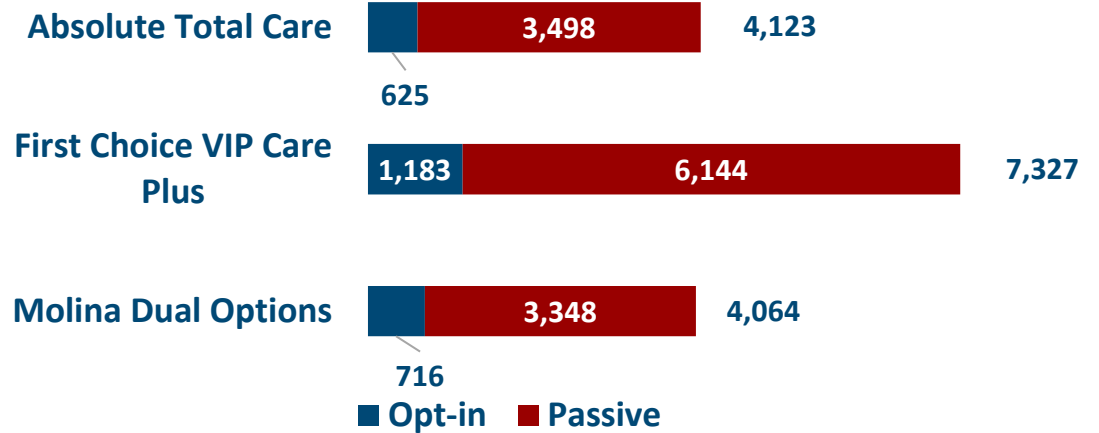


Enrollment by Plan

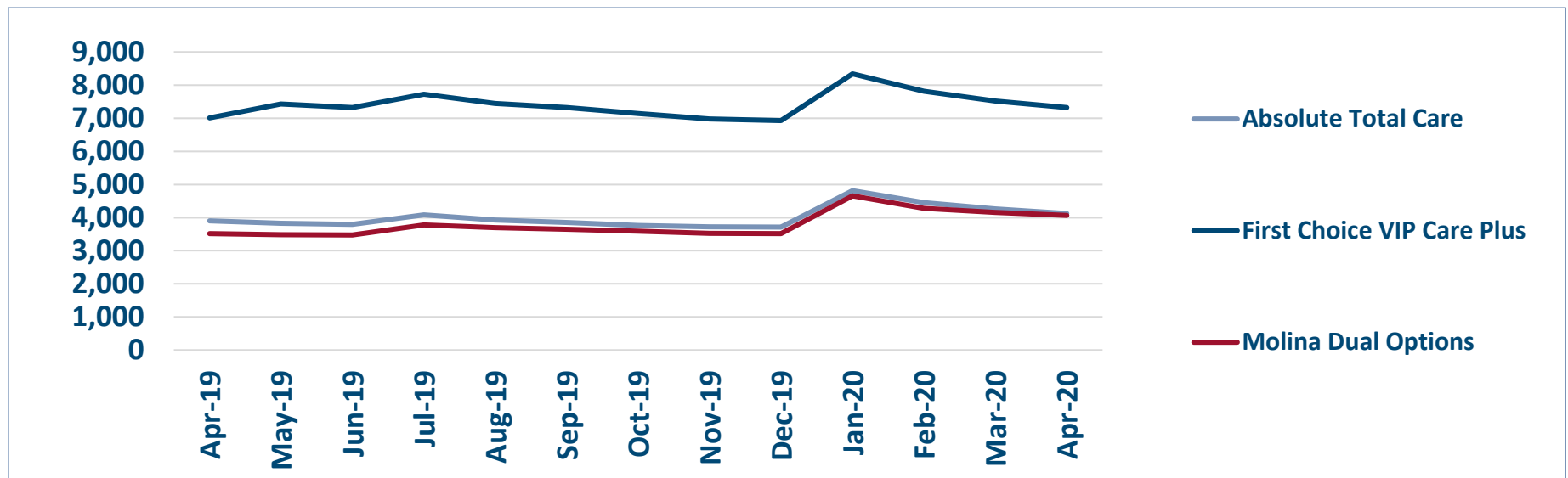


ENROLLMENT SOURCE BY PLAN

Total: 15,514



Monthly Enrollment By Plan

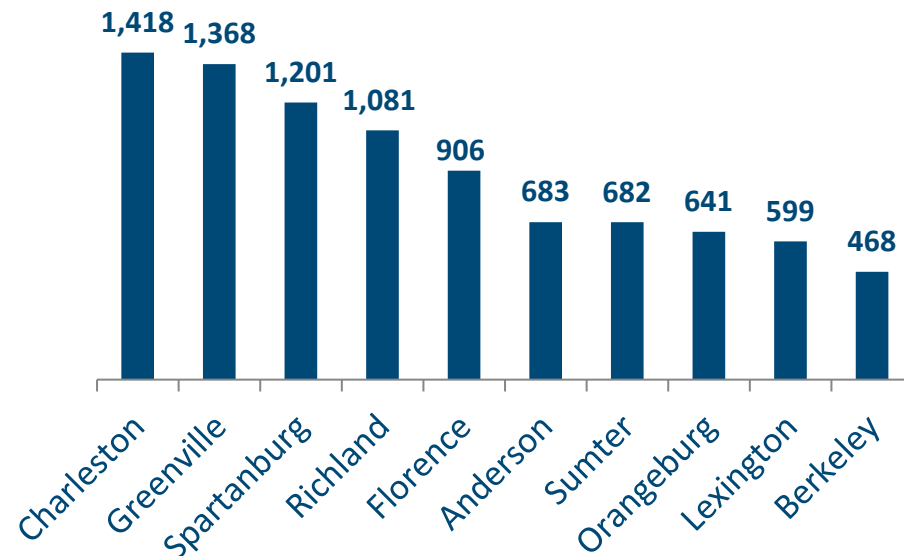


Healthy Connections Prime Active Enrollment

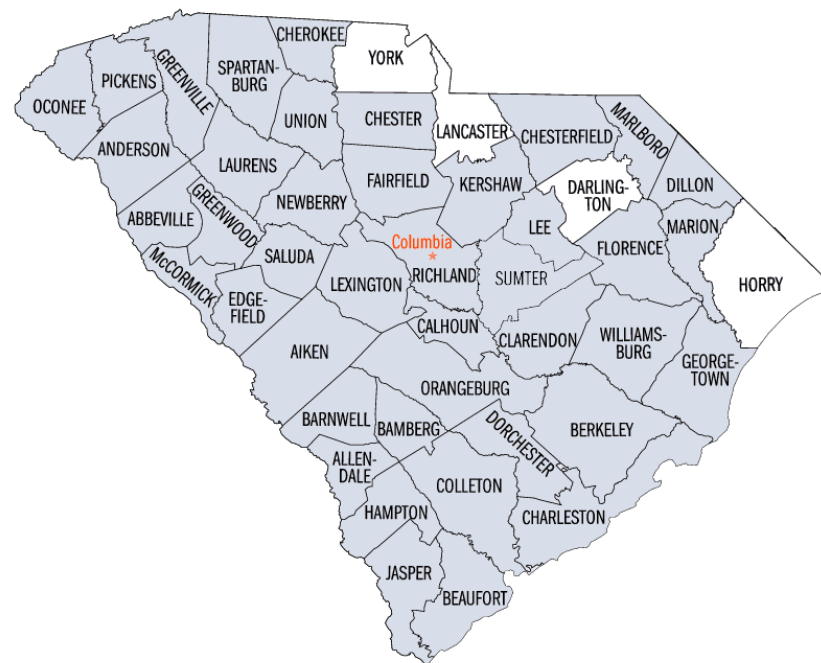
Apr 2020

County	Absolute Total Care	First Choice VIP Care Plus	Molina Dual Options	County Total
Abbeville	31	68	37	136
Aiken	0	1	0	1
Allendale	22	37	31	90
Anderson	71	529	83	683
Bamberg	48	39	46	133
Barnwell	39	48	57	144
Beaufort	141	190	0	331
Berkeley	232	236	0	468
Calhoun	21	25	39	85
Charleston	475	501	442	1,418
Cherokee	0	278	0	278
Chester	48	54	67	169
Chesterfield	96	95	93	284
Clarendon	94	113	41	248
Colleton	77	74	108	259
Darlington	0	0	0	0
Dillon	82	84	95	261
Dorchester	0	3	0	3
Edgefield	30	37	48	115
Fairfield	38	70	64	172
Florence	271	320	315	906
Georgetown	147	198	44	389
Greenville	416	477	475	1,368
Greenwood	27	238	23	288
Hampton	55	62	43	160
Horry	0	0	0	0
Jasper	60	46	17	123
Kershaw	67	122	124	313
Lancaster	0	0	0	0
Laurens	77	143	111	331
Lee	45	66	66	177
Lexington	131	179	289	599
Marion	73	72	74	219
Marlboro	9	24	17	50
McCormick	81	87	125	293
Newberry	35	67	73	175
Oconee	0	271	46	317
Orangeburg	257	302	82	641
Pickens	113	174	89	376
Richland	313	393	375	1,081
Saluda	23	40	35	98
Spartanburg	251	692	258	1,201
Sumter	0	682	0	682
Union	26	84	32	142
Williamsburg	101	106	100	307
York	0	0	0	0
Total	4,123	7,327	4,064	15,514

TOP 10 COUNTIES BY ENROLLMENT



HEALTHY CONNECTIONS PRIME COUNTY PARTICIPATION

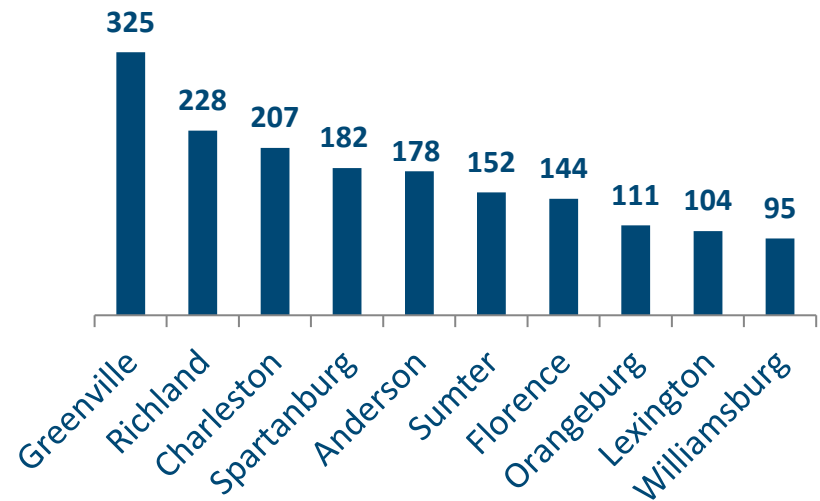


Sources: SCDHHS Medicaid Management Information System, CMS Monthly Full Enrollment Data File (Updated April 2020)

Healthy Connections Prime HCBS Waiver Enrollment Apr 2020

County	Absolute Total Care	First Choice VIP Care Plus	Molina Dual Options	County Total
Abbeville	7	16	8	31
Aiken	0	0	0	0
Allendale	6	8	10	24
Anderson	12	139	27	178
Bamberg	9	7	7	23
Barnwell	5	3	14	22
Beaufort	15	32	0	47
Berkeley	27	36	0	63
Calhoun	0	6	9	15
Charleston	54	73	80	207
Cherokee	0	33	0	33
Chester	3	10	11	24
Chesterfield	6	8	10	24
Clarendon	26	25	7	58
Colleton	9	12	10	31
Darlington	0	0	0	0
Dillon	11	20	17	48
Dorchester	0	0	0	0
Edgefield	6	2	5	13
Fairfield	11	16	14	41
Florence	40	59	45	144
Georgetown	37	35	10	82
Greenville	93	122	110	325
Greenwood	6	33	4	43
Hampton	11	17	9	37
Horry	0	0	0	0
Jasper	6	8	2	16
Kershaw	9	15	20	44
Lancaster	0	0	0	0
Laurens	16	21	12	49
Lee	6	18	11	35
Lexington	20	36	48	104
Marion	19	20	34	73
Marlboro	7	5	7	19
McCormick	3	2	4	9
Newberry	5	13	11	29
Oconee	0	68	9	77
Orangeburg	39	53	19	111
Pickens	25	43	19	87
Richland	69	86	73	228
Saluda	4	3	7	14
Spartanburg	38	114	30	182
Sumter	0	152	0	152
Union	4	17	3	24
Williamsburg	32	33	30	95
York	0	0	0	0
Total	696	1,419	746	2,861

CURRENT TOP 10 COUNTIES BY WAIVER ENROLLMENT



HCBS WAIVER UTILIZATION

Waiver Service	Total
Community Choices	2,820
HIV/AIDS	40
Mechanical Ventilator Dependent	1
Total	2,861

Sources: SCDHHS Medicaid Management Information System, CMS Monthly Full Enrollment Data File (Updated April 2020)

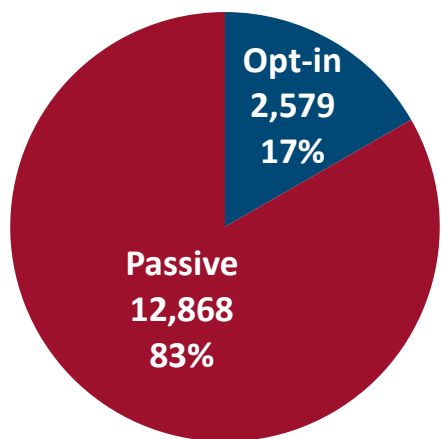
May 2020

May 2020 Active Enrollments

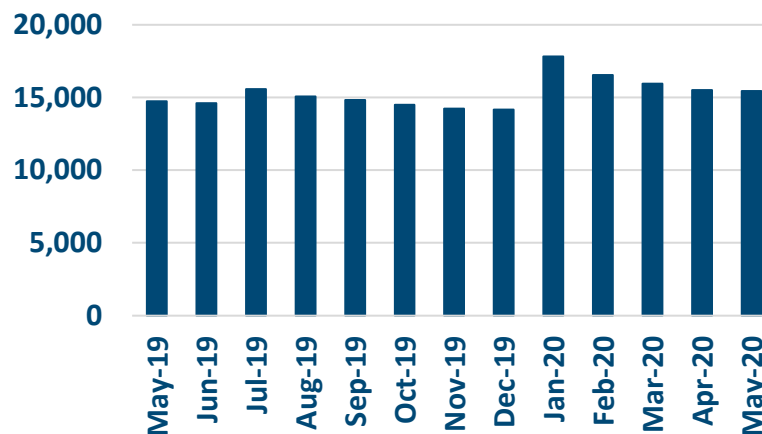


Enrollment Breakdown by Source

OPT-IN VS. PASSIVE ENROLLMENTS



TOTAL ENROLLMENT BY MONTH*



May Active Enrollments
15,447

April Active Enrollments
15,514

Monthly Enrollment Change
0%

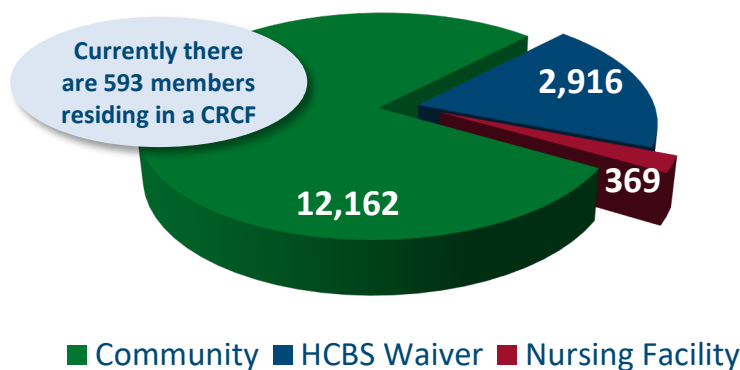
Nursing Facility Usage and Enrollee Demographics

NURSING FACILITY UTILIZATION

Type of Stay	Total
Custodial	369
Non-Custodial**	192
Total	561

** Portions of this chart are self-reported MMP data.

ENROLLEE POPULATION BREAKDOWN



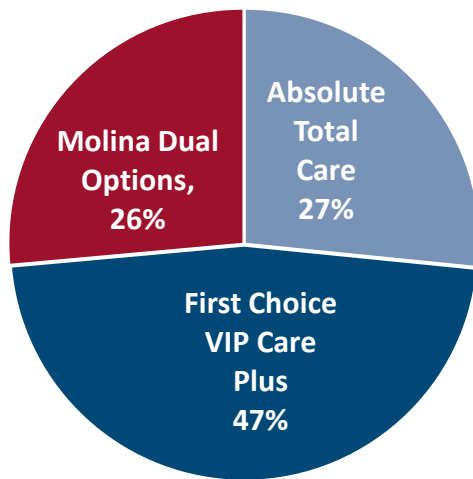
New Stakeholder Update

Please click [here](#) to access our June 2020 Stakeholder Update. This update contains highlights regarding COVID-19 and Healthy Connections Prime interactions, elder abuse awareness and reporting resources, county expansion, and educational videos facilitated by our partners at SC Thrive.

May 2020 Active Enrollments

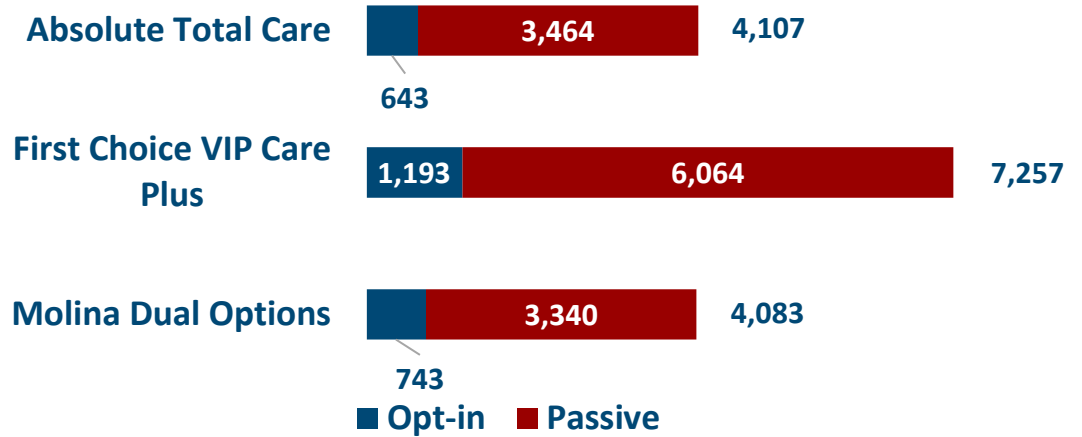


Enrollment by Plan

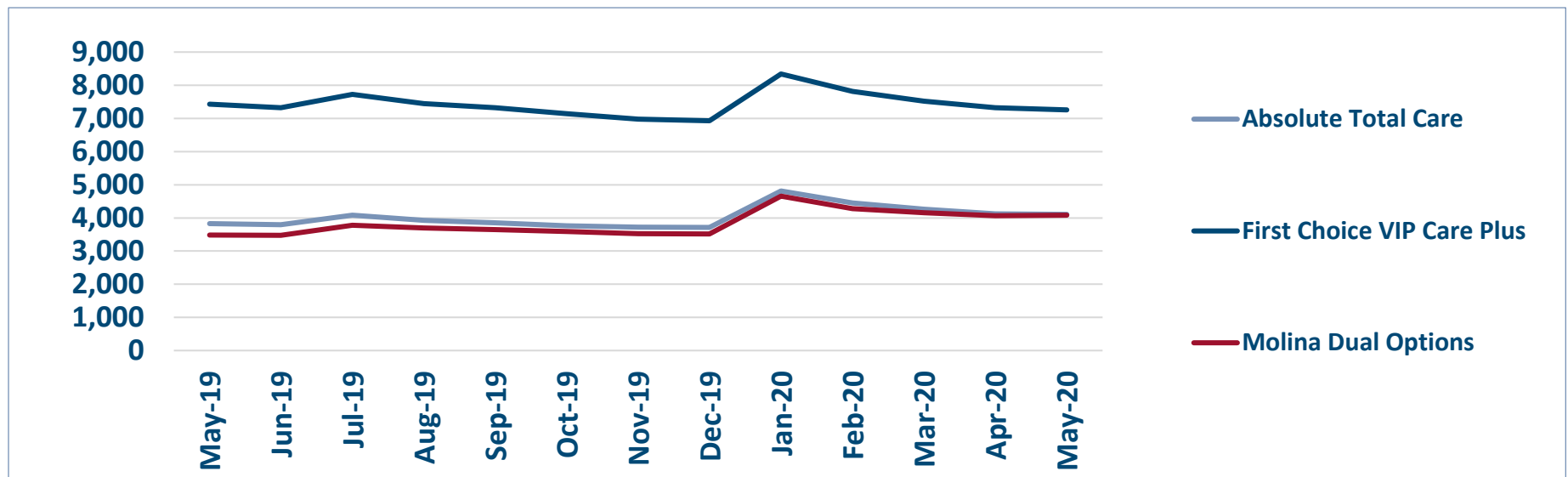


ENROLLMENT SOURCE BY PLAN

Total: 15,447



Monthly Enrollment By Plan

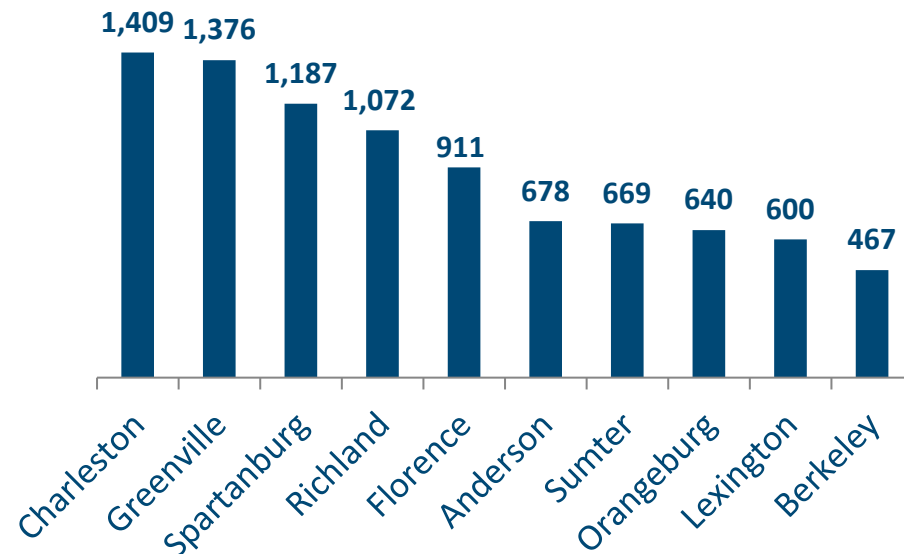


Healthy Connections Prime Active Enrollment

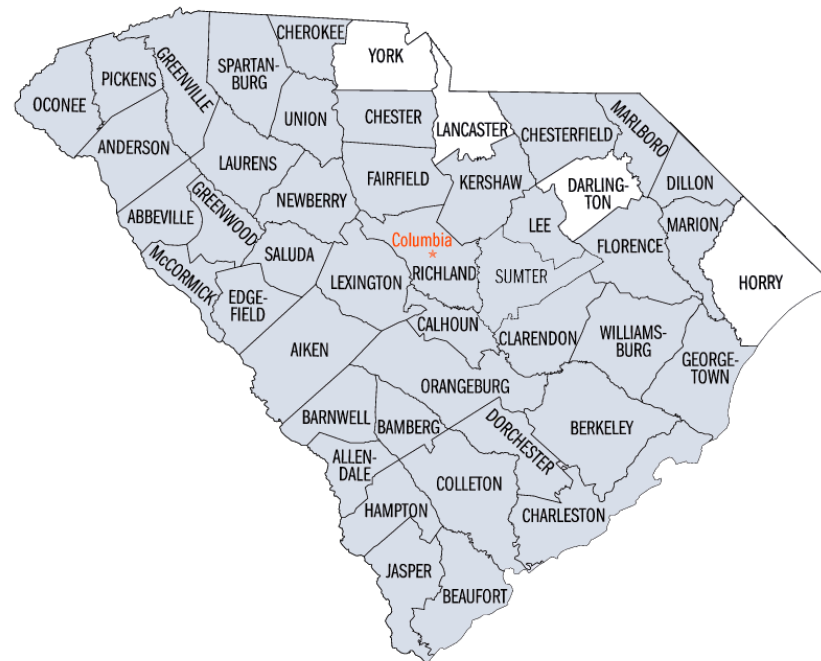
May 2020

County	Absolute Total Care	First Choice VIP Care Plus	Molina Dual Options	County Total
Abbeville	31	68	37	136
Aiken	0	0	0	0
Allendale	20	39	30	89
Anderson	73	524	81	678
Bamberg	47	39	44	130
Barnwell	40	48	56	144
Beaufort	141	189	0	330
Berkeley	234	233	0	467
Calhoun	20	28	41	89
Charleston	471	495	443	1,409
Cherokee	0	276	0	276
Chester	50	53	70	173
Chesterfield	93	91	93	277
Clarendon	94	111	41	246
Colleton	77	74	107	258
Darlington	0	0	0	0
Dillon	85	84	95	264
Dorchester	0	0	0	0
Edgefield	29	36	49	114
Fairfield	37	70	64	171
Florence	270	318	323	911
Georgetown	150	193	42	385
Greenville	419	476	481	1,376
Greenwood	26	233	22	281
Hampton	54	62	42	158
Horry	0	0	0	0
Jasper	60	47	16	123
Kershaw	68	122	121	311
Lancaster	0	0	0	0
Laurens	78	142	112	332
Lee	45	64	65	174
Lexington	128	180	292	600
Marion	82	86	125	293
Marlboro	71	68	73	212
McCormick	10	26	17	53
Newberry	35	66	76	177
Oconee	0	273	49	322
Orangeburg	254	301	85	640
Pickens	110	172	90	372
Richland	306	390	376	1,072
Saluda	23	39	34	96
Spartanburg	250	679	258	1,187
Sumter	0	669	0	669
Union	26	85	33	144
Williamsburg	100	108	100	308
York	0	0	0	0
Total	4,107	7,257	4,083	15,447

TOP 10 COUNTIES BY ENROLLMENT



HEALTHY CONNECTIONS PRIME COUNTY PARTICIPATION

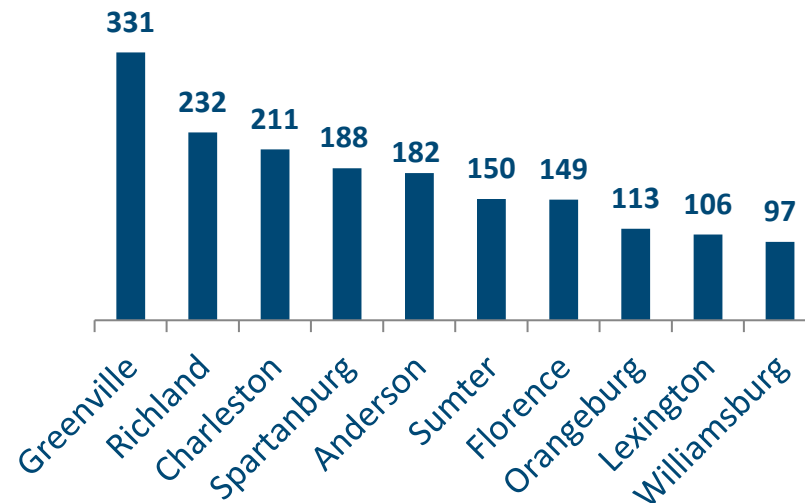


Sources: SCDHHS Medicaid Management Information System, CMS Monthly Full Enrollment Data File (Updated May 2020)

Healthy Connections Prime HCBS Waiver Enrollment May 2020

County	Absolute Total Care	First Choice VIP Care Plus	Molina Dual Options	County Total
Abbeville	7	16	9	32
Aiken	0	1	0	1
Allendale	5	8	11	24
Anderson	14	141	27	182
Bamberg	9	7	7	23
Barnwell	6	3	14	23
Beaufort	15	33	0	48
Berkeley	27	36	0	63
Calhoun	1	6	9	16
Charleston	56	72	83	211
Cherokee	0	34	0	34
Chester	4	9	12	25
Chesterfield	6	8	10	24
Clarendon	29	25	7	61
Colleton	9	12	10	31
Darlington	0	0	0	0
Dillon	11	20	17	48
Dorchester	0	0	0	0
Edgefield	6	2	5	13
Fairfield	11	17	16	44
Florence	41	59	49	149
Georgetown	38	35	10	83
Greenville	95	124	112	331
Greenwood	5	33	4	42
Hampton	11	16	10	37
Horry	0	0	0	0
Jasper	6	9	2	17
Kershaw	9	15	20	44
Lancaster	0	0	0	0
Laurens	16	21	13	50
Lee	6	18	11	35
Lexington	20	39	47	106
Marion	20	21	35	76
Marlboro	7	5	7	19
McCormick	3	2	4	9
Newberry	5	14	12	31
Oconee	0	68	11	79
Orangeburg	38	56	19	113
Pickens	25	42	18	85
Richland	71	84	77	232
Saluda	4	3	7	14
Spartanburg	42	117	29	188
Sumter	0	150	0	150
Union	4	18	4	26
Williamsburg	31	34	32	97
York	0	0	0	0
Total	713	1,433	770	2,916

CURRENT TOP 10 COUNTIES BY WAIVER ENROLLMENT



HCBS WAIVER UTILIZATION

Waiver Service	Total
Community Choices	2,875
HIV/AIDS	40
Mechanical Ventilator Dependent	1
Total	2,916

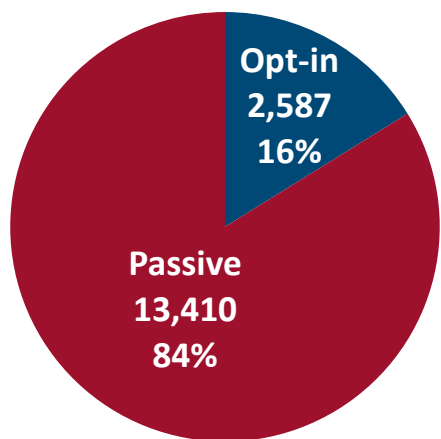
June 2020

June 2020 Active Enrollments

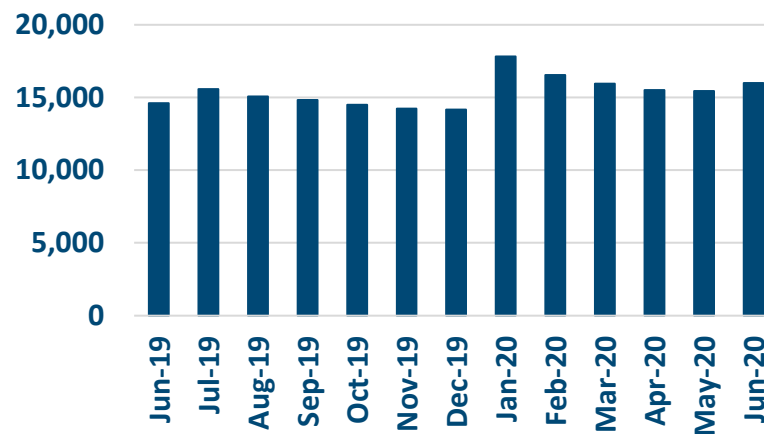


Enrollment Breakdown by Source

OPT-IN VS. PASSIVE ENROLLMENTS



TOTAL ENROLLMENT BY MONTH*



June Active Enrollments
15,997

May Active Enrollments
15,447

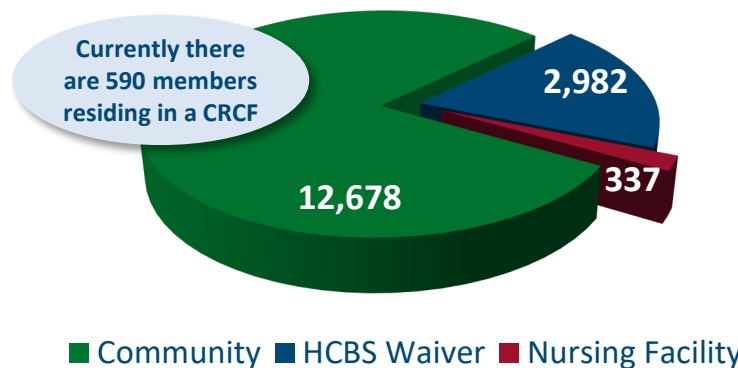
Monthly Enrollment Change
4%

Nursing Facility Usage and Enrollee Demographics

NURSING FACILITY UTILIZATION

Type of Stay	Total
Custodial	337
Non-Custodial**	190
Total	527

ENROLLEE POPULATION BREAKDOWN



New County Expansions

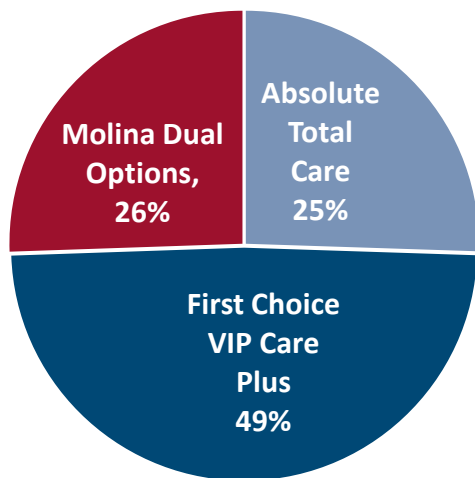
Molina Dual Options is now available for enrollment in Aiken, Berkeley, and Cherokee counties! Contact Healthy Connections Choices for all enrollment options at:
1-877-552-4642
(TTY Line for hearing impaired: 1-877-552-4670)

** Portions of this chart are self-reported MMP data.

June 2020 Active Enrollments

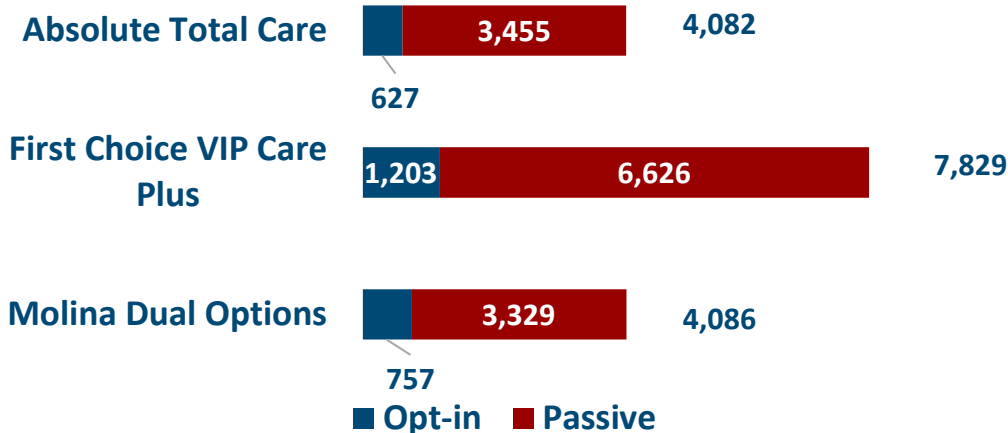


Enrollment by Plan

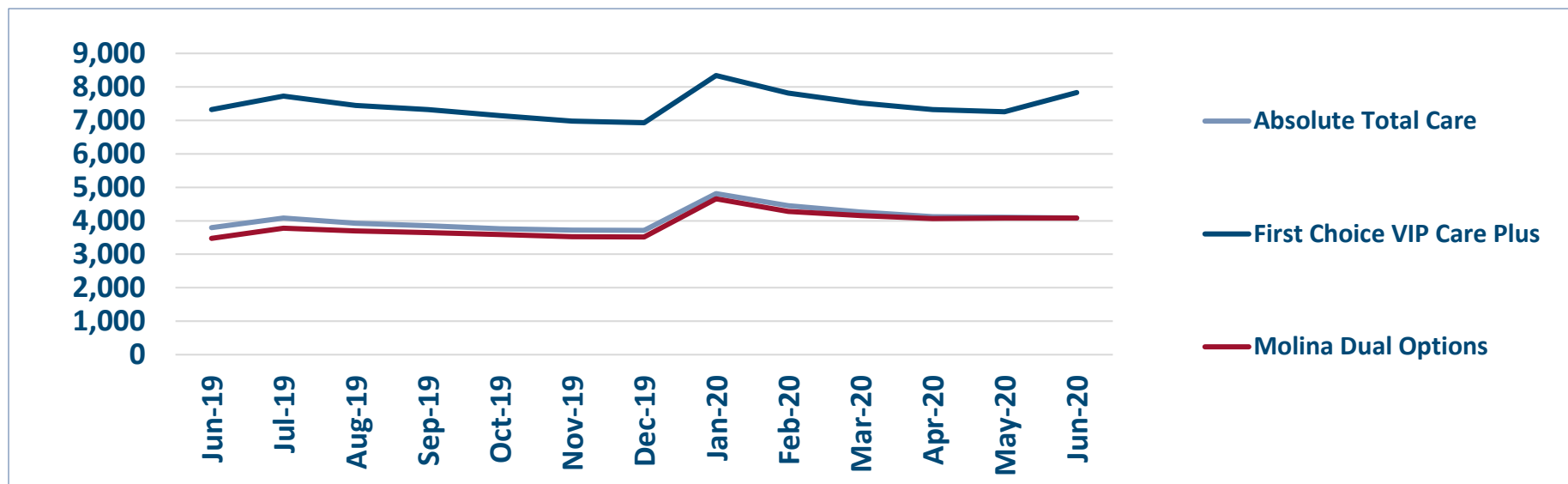


ENROLLMENT SOURCE BY PLAN

Total: 15,997



Monthly Enrollment By Plan

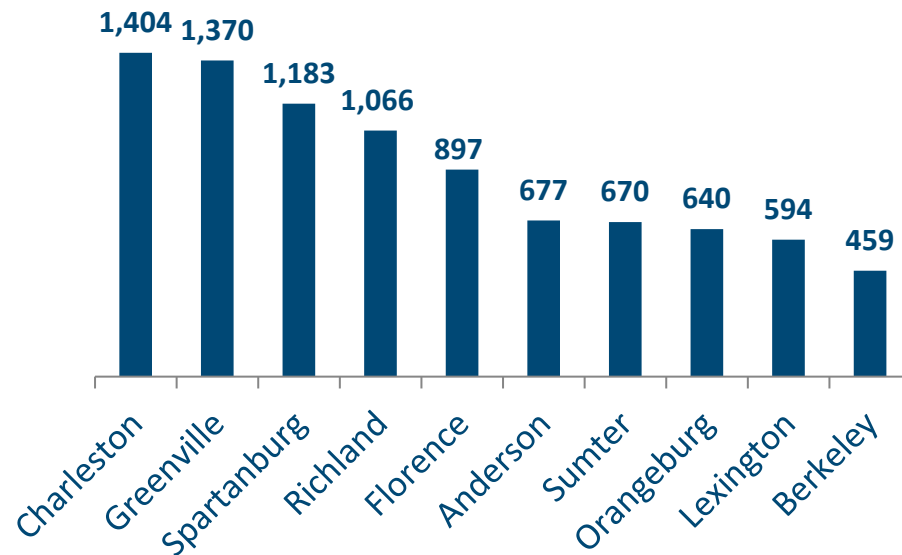


Healthy Connections Prime Active Enrollment

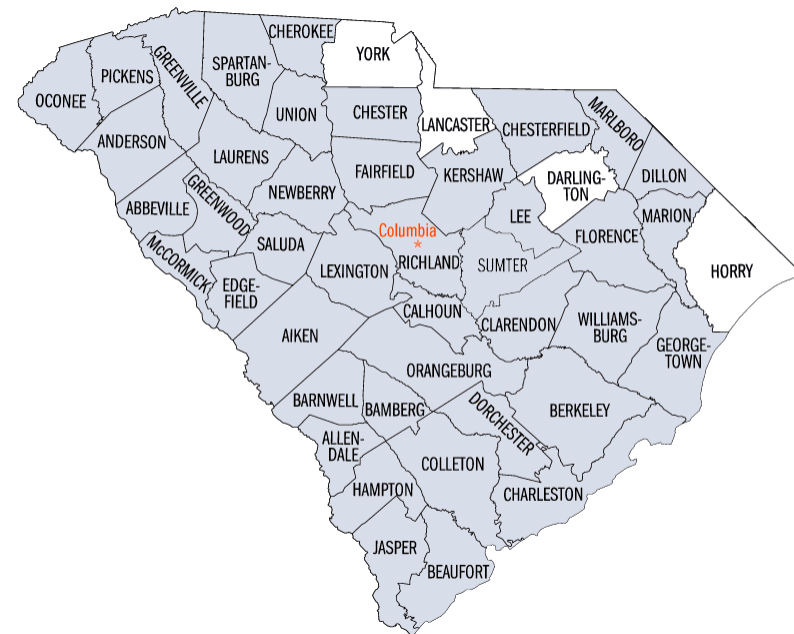
Jun 2020

County	Absolute Total Care	First Choice VIP Care Plus	Molina Dual Options	County Total
Abbeville	31	68	38	137
Aiken	0	411	3	414
Allendale	20	39	30	89
Anderson	75	520	82	677
Bamberg	46	39	44	129
Barnwell	40	49	57	146
Beaufort	137	190	0	327
Berkeley	231	227	1	459
Calhoun	19	25	41	85
Charleston	466	494	444	1,404
Cherokee	0	275	1	276
Chester	51	52	69	172
Chesterfield	94	90	91	275
Clarendon	90	108	44	242
Colleton	77	75	108	260
Darlington	0	0	0	0
Dillon	87	86	98	271
Dorchester	0	223	0	223
Edgefield	29	35	47	111
Fairfield	38	67	62	167
Florence	270	308	319	897
Georgetown	146	186	42	374
Greenville	416	474	480	1,370
Greenwood	27	232	22	281
Hampton	53	60	43	156
Horry	0	0	0	0
Jasper	60	45	16	121
Kershaw	67	121	118	306
Lancaster	0	0	0	0
Laurens	80	142	111	333
Lee	47	62	65	174
Lexington	122	178	294	594
Marion	83	83	124	290
Marlboro	70	68	75	213
McCormick	9	25	17	51
Newberry	34	64	74	172
Oconee	0	273	50	323
Orangeburg	258	299	83	640
Pickens	113	172	89	374
Richland	301	392	373	1,066
Saluda	22	39	35	96
Spartanburg	249	675	259	1,183
Sumter	0	669	1	670
Union	24	83	34	141
Williamsburg	100	106	102	308
York	0	0	0	0
Total	4,082	7,829	4,086	15,997

TOP 10 COUNTIES BY ENROLLMENT



HEALTHY CONNECTIONS PRIME COUNTY PARTICIPATION



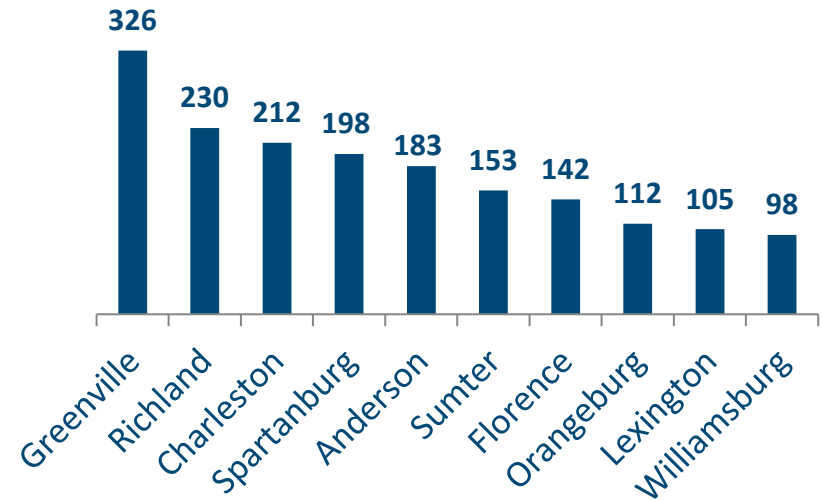
Sources: SCDHHS Medicaid Management Information System, CMS Monthly Full Enrollment Data File (Updated June 2020)

Healthy Connections Prime HCBS Waiver Enrollment

Jun 2020

County	Absolute Total Care	First Choice VIP Care Plus	Molina Dual Options	County Total
Abbeville	6	17	8	31
Aiken	0	40	1	41
Allendale	5	8	11	24
Anderson	15	140	28	183
Bamberg	9	7	6	22
Barnwell	6	4	14	24
Beaufort	17	34	0	51
Berkeley	26	36	0	62
Calhoun	1	6	9	16
Charleston	55	72	85	212
Cherokee	0	35	0	35
Chester	4	9	11	24
Chesterfield	6	8	10	24
Clarendon	27	24	8	59
Colleton	10	12	12	34
Darlington	0	0	0	0
Dillon	11	20	18	49
Dorchester	0	37	0	37
Edgefield	6	2	5	13
Fairfield	11	16	15	42
Florence	41	56	45	142
Georgetown	36	33	7	76
Greenville	95	122	109	326
Greenwood	5	35	4	44
Hampton	10	15	11	36
Horry	0	0	0	0
Jasper	6	9	2	17
Kershaw	9	15	20	44
Lancaster	0	0	0	0
Laurens	15	20	12	47
Lee	5	18	10	33
Lexington	21	37	47	105
Marion	20	19	37	76
Marlboro	8	5	7	20
McCormick	3	2	4	9
Newberry	5	12	11	28
Oconee	0	68	12	80
Orangeburg	37	57	18	112
Pickens	26	42	17	85
Richland	70	83	77	230
Saluda	4	3	8	15
Spartanburg	42	124	32	198
Sumter	0	153	0	153
Union	4	17	4	25
Williamsburg	32	34	32	98
York	0	0	0	0
Total	709	1,506	767	2,982

CURRENT TOP 10 COUNTIES BY WAIVER ENROLLMENT



HCBS WAIVER UTILIZATION

Waiver Service	Total
Community Choices	2,941
HIV/AIDS	40
Mechanical Ventilator Dependent	1
Total	2,982

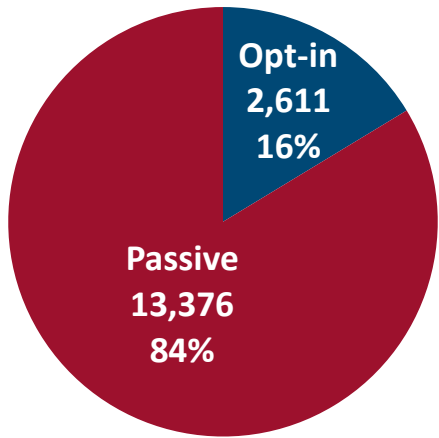
July 2020

July 2020 Active Enrollments

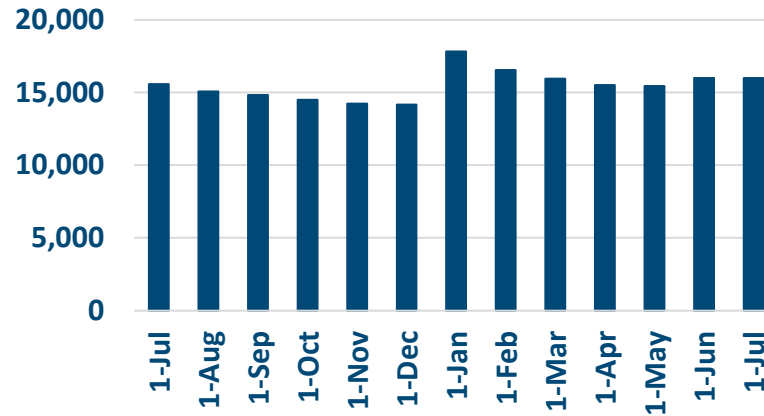


Enrollment Breakdown by Source

OPT-IN VS. PASSIVE ENROLLMENTS



TOTAL ENROLLMENT BY MONTH



July Active Enrollments
15,987

June Active Enrollments
15,997

Monthly Enrollment Change
0%

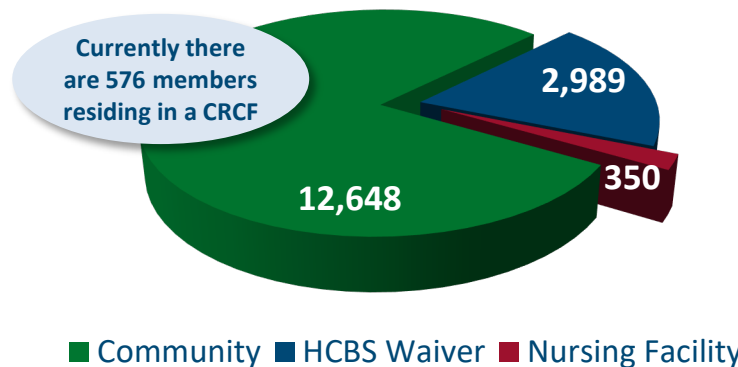
Nursing Facility Usage and Enrollee Demographics

NURSING FACILITY UTILIZATION

Type of Stay	Total
Custodial	350
Non-Custodial*	187
Total	537

* Portions of this chart are self-reported MMP data.

ENROLLEE POPULATION BREAKDOWN



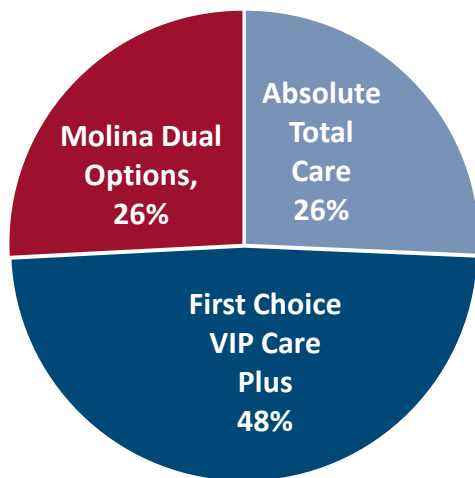
New County Expansions

ATC is now available in for enrollment in Cherokee and Dorchester counties. Contact Healthy Connections Choices for all enrollment options at:
1-877-552-4642
TTY Line (for hearing impaired):
1-877-552-4670

July 2020 Active Enrollments

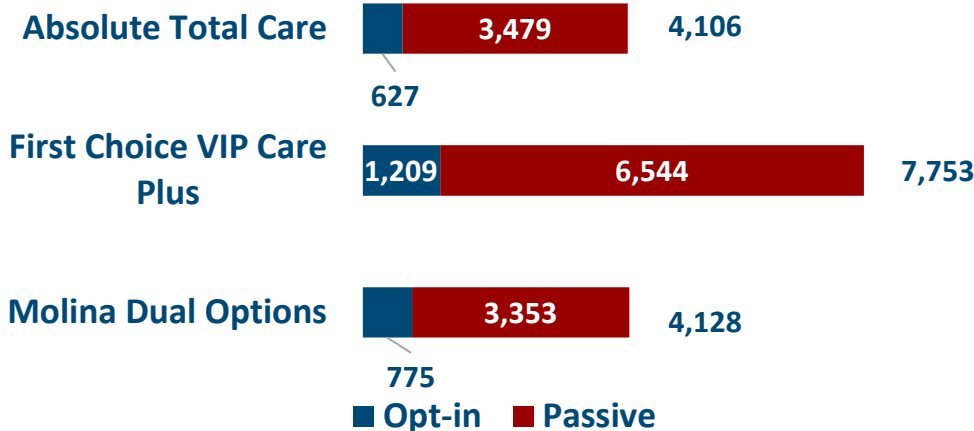


Enrollment by Plan

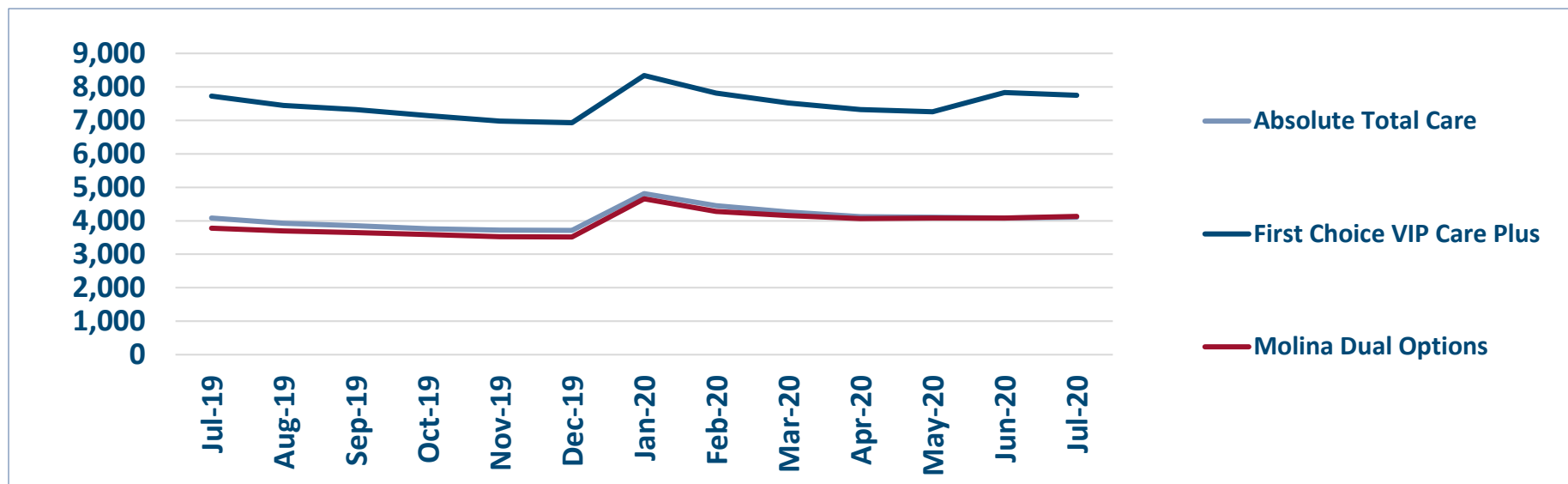


ENROLLMENT SOURCE BY PLAN

Total: 15,987



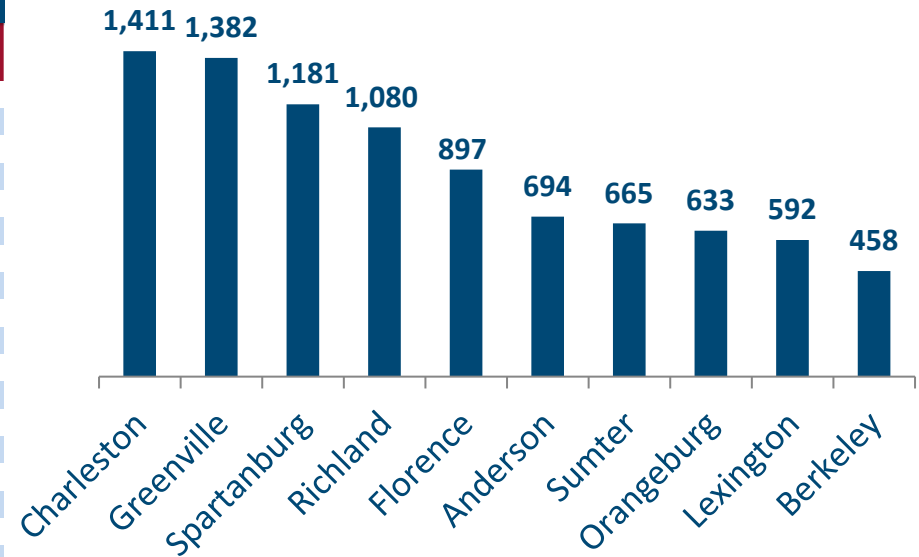
Monthly Enrollment By Plan



Healthy Connections Prime Active Enrollment Jul 2020

County	Absolute Total Care	First Choice VIP Care Plus	Molina Dual Options	County Total
Abbeville	31	68	36	135
Aiken	0	356	5	361
Allendale	19	38	30	87
Anderson	79	524	91	694
Bamberg	47	40	45	132
Barnwell	41	48	57	146
Beaufort	137	193	0	330
Berkeley	230	226	2	458
Calhoun	20	25	41	86
Charleston	469	491	451	1,411
Cherokee	0	272	2	274
Chester	53	51	69	173
Chesterfield	97	90	91	278
Clarendon	92	105	45	242
Colleton	78	75	104	257
Darlington	0	0	0	0
Dillon	89	84	95	268
Dorchester	0	224	1	225
Edgefield	29	35	47	111
Fairfield	38	67	62	167
Florence	272	305	320	897
Georgetown	143	187	45	375
Greenville	418	481	483	1,382
Greenwood	28	229	25	282
Hampton	52	61	46	159
Horry	0	0	0	0
Jasper	59	44	17	120
Kershaw	69	123	120	312
Lancaster	0	0	0	0
Laurens	81	140	112	333
Lee	45	62	66	173
Lexington	120	180	292	592
Marion	83	84	121	288
Marlboro	73	68	76	217
McCormick	9	25	18	52
Newberry	35	65	70	170
Oconee	0	270	50	320
Orangeburg	259	291	83	633
Pickens	116	171	88	375
Richland	301	393	386	1,080
Saluda	21	36	35	92
Spartanburg	247	674	260	1,181
Sumter	0	665	0	665
Union	24	84	36	144
Williamsburg	102	103	105	310
York	0	0	0	0
Total	4,106	7,753	4,128	15,987

TOP 10 COUNTIES BY ENROLLMENT



HEALTHY CONNECTIONS PRIME COUNTY PARTICIPATION



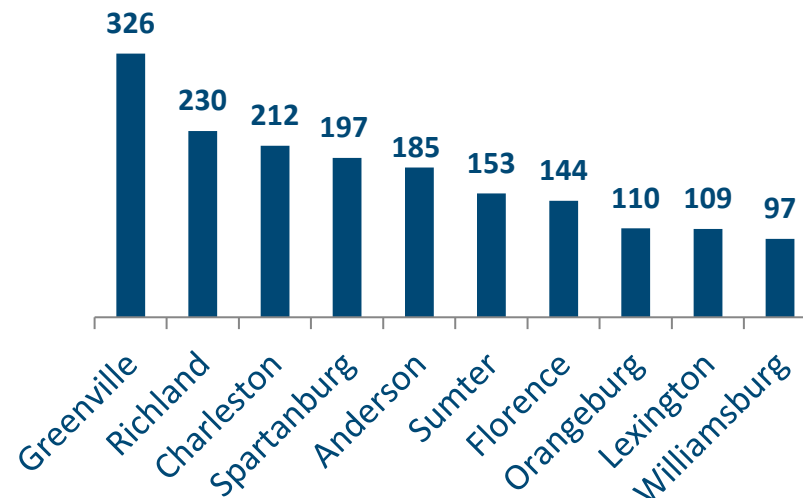
Sources: SCDHHS Medicaid Management Information System, CMS Monthly Full Enrollment Data File (Updated July 2020)

Healthy Connections Prime HCBS Waiver Enrollment

Jul 2020

County	Absolute Total Care	First Choice VIP Care Plus	Molina Dual Options	County Total
Abbeville	7	17	9	33
Aiken	0	37	1	38
Allendale	5	6	11	22
Anderson	17	138	30	185
Bamberg	11	8	6	25
Barnwell	7	4	14	25
Beaufort	17	34	0	51
Berkeley	26	35	1	62
Calhoun	2	6	9	17
Charleston	56	68	88	212
Cherokee	0	35	0	35
Chester	5	6	12	23
Chesterfield	7	9	11	27
Clarendon	27	24	9	60
Colleton	9	12	11	32
Darlington	0	0	0	0
Dillon	13	20	15	48
Dorchester	0	33	0	33
Edgefield	6	2	4	12
Fairfield	11	16	16	43
Florence	42	54	48	144
Georgetown	34	35	7	76
Greenville	95	123	108	326
Greenwood	6	35	4	45
Hampton	9	15	11	35
Horry	0	0	0	0
Jasper	6	8	2	16
Kershaw	10	15	22	47
Lancaster	0	0	0	0
Laurens	15	22	12	49
Lee	5	18	10	33
Lexington	21	40	48	109
Marion	21	19	36	76
Marlboro	8	5	7	20
McCormick	3	2	4	9
Newberry	5	12	11	28
Oconee	0	70	13	83
Orangeburg	39	53	18	110
Pickens	27	41	16	84
Richland	71	82	77	230
Saluda	4	3	7	14
Spartanburg	42	121	34	197
Sumter	0	153	0	153
Union	3	18	4	25
Williamsburg	31	34	32	97
York	0	0	0	0
Total	723	1,488	778	2,989

CURRENT TOP 10 COUNTIES BY WAIVER ENROLLMENT



HCBS WAIVER UTILIZATION

Waiver Service	Total
Community Choices	2,948
HIV/AIDS	40
Mechanical Ventilator Dependent	1
Total	2,989

Sources: SCDHHS Medicaid Management Information System, CMS Monthly Full Enrollment Data File (Updated July 2020)

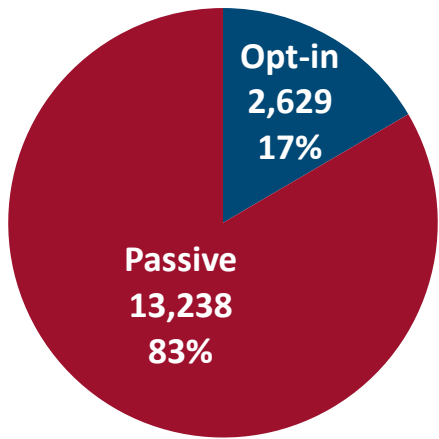
August 2020

August 2020 Active Enrollments

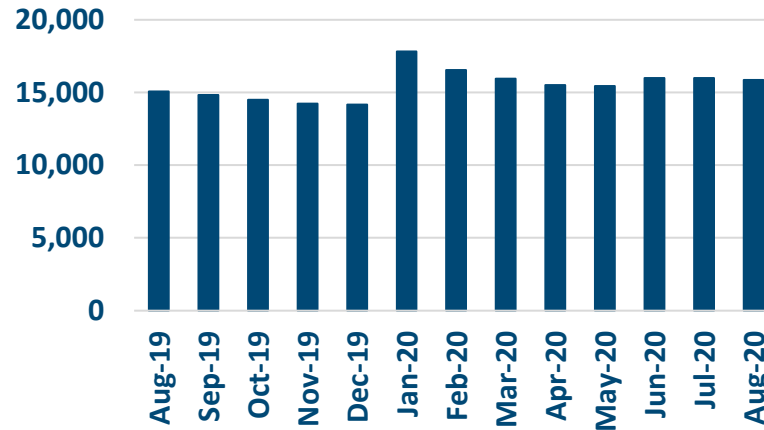


Enrollment Breakdown by Source

OPT-IN VS. PASSIVE ENROLLMENTS



TOTAL ENROLLMENT BY MONTH



August Active Enrollments
15,867

July Active Enrollments
15,987

Monthly Enrollment Change
-1%

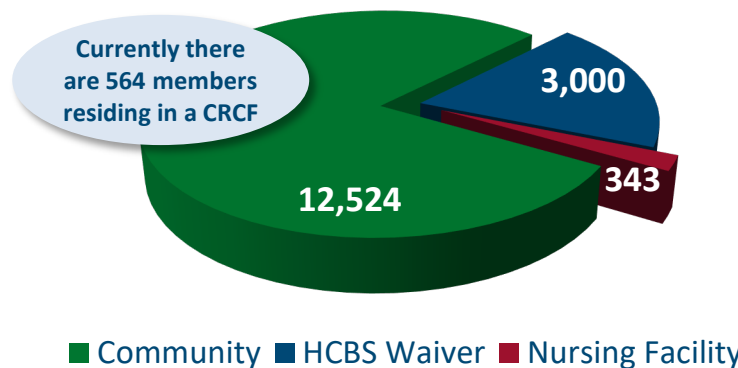
Nursing Facility Usage and Enrollee Demographics

NURSING FACILITY UTILIZATION

Type of Stay	Total
Custodial	343
Non-Custodial*	204
Total	547

* Portions of this chart are self-reported MMP data.

ENROLLEE POPULATION BREAKDOWN



Flu Vaccine Reminder

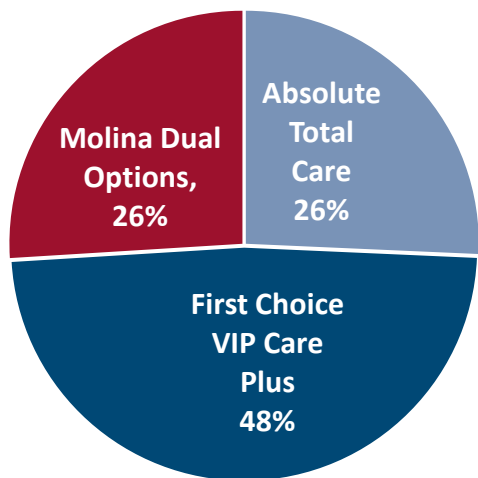
Flu season is coming up and Healthy Connections Prime wants to remind members and caregivers to get the annual flu vaccine.

Because of the COVID-19 pandemic, reducing the spread of respiratory illnesses, like flu, this fall and winter is more important than ever. To learn more, please click on [this link](#).

August 2020 Active Enrollments

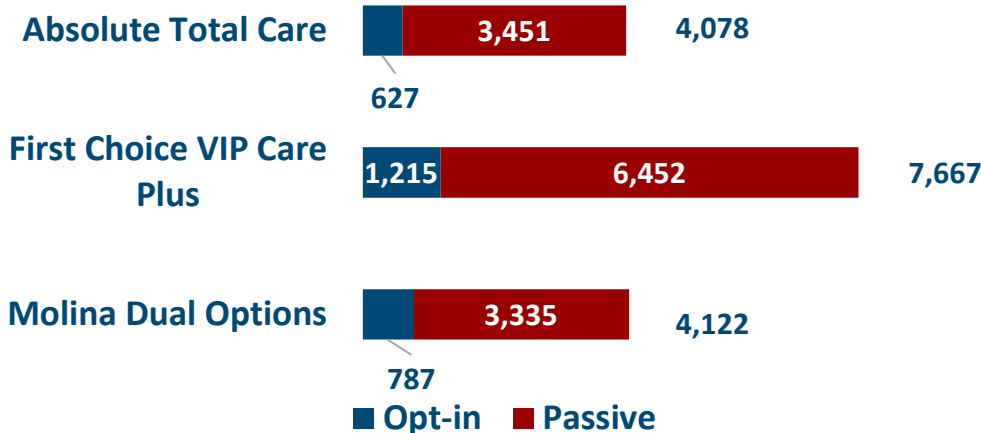


Enrollment by Plan

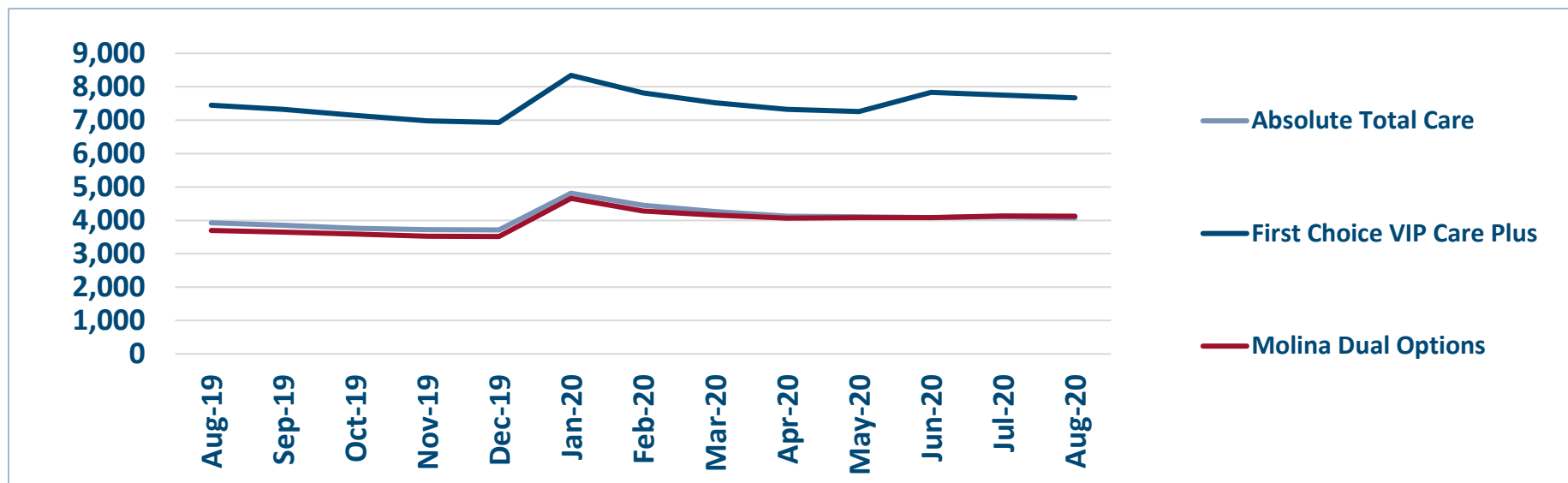


ENROLLMENT SOURCE BY PLAN

Total: 15,867

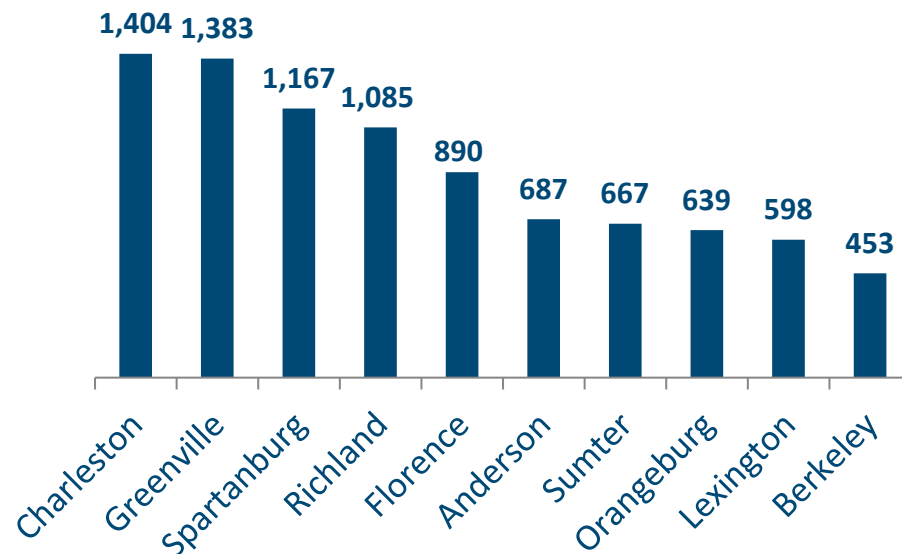


Monthly Enrollment By Plan

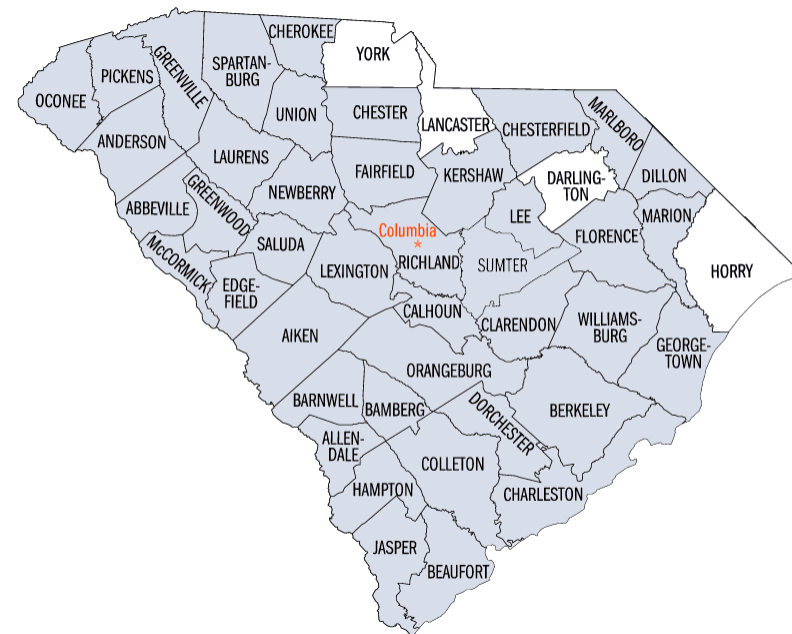


Healthy Connections Prime Active Enrollment				Aug 2020
County	Absolute Total Care	First Choice VIP Care Plus	Molina Dual Options	County Total
Abbeville	30	67	34	131
Aiken	0	324	8	332
Allendale	19	37	29	85
Anderson	81	518	88	687
Bamberg	47	39	45	131
Barnwell	42	48	57	147
Beaufort	138	191	0	329
Berkeley	227	223	3	453
Calhoun	21	24	40	85
Charleston	468	489	447	1,404
Cherokee	0	265	2	267
Chester	51	50	67	168
Chesterfield	94	91	91	276
Clarendon	90	103	44	237
Colleton	77	73	105	255
Darlington	0	0	0	0
Dillon	88	84	97	269
Dorchester	1	222	0	223
Edgefield	29	35	46	110
Fairfield	35	68	62	165
Florence	268	302	320	890
Georgetown	142	185	47	374
Greenville	413	487	483	1,383
Greenwood	27	225	25	277
Hampton	51	60	44	155
Horry	0	0	0	0
Jasper	59	45	16	120
Kershaw	67	118	119	304
Lancaster	0	0	0	0
Laurens	82	140	112	334
Lee	47	60	66	173
Lexington	119	184	295	598
Marion	84	83	120	287
Marlboro	70	66	78	214
McCormick	9	25	19	53
Newberry	35	63	71	169
Oconee	0	265	51	316
Orangeburg	260	294	85	639
Pickens	114	167	86	367
Richland	305	395	385	1,085
Saluda	21	36	35	92
Spartanburg	243	665	259	1,167
Sumter	1	666	0	667
Union	22	83	37	142
Williamsburg	101	102	104	307
York	0	0	0	0
Total	4,078	7,667	4,122	15,867

TOP 10 COUNTIES BY ENROLLMENT



HEALTHY CONNECTIONS PRIME COUNTY PARTICIPATION

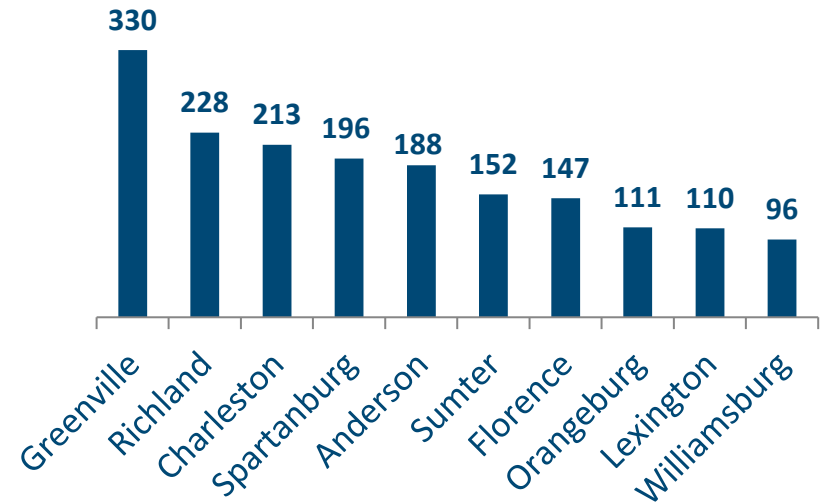


Healthy Connections Prime HCBS Waiver Enrollment

Aug 2020

County	Absolute Total Care	First Choice VIP Care Plus	Molina Dual Options	County Total
Abbeville	9	16	7	32
Aiken	0	31	1	32
Allendale	5	5	11	21
Anderson	19	137	32	188
Bamberg	10	7	8	25
Barnwell	7	7	15	29
Beaufort	17	31	0	48
Berkeley	25	34	1	60
Calhoun	3	6	9	18
Charleston	57	68	88	213
Cherokee	0	34	0	34
Chester	5	6	13	24
Chesterfield	6	9	11	26
Clarendon	28	24	8	60
Colleton	9	12	12	33
Darlington	0	0	0	0
Dillon	13	20	15	48
Dorchester	0	38	0	38
Edgefield	6	3	5	14
Fairfield	9	17	17	43
Florence	42	54	51	147
Georgetown	34	36	7	77
Greenville	97	123	110	330
Greenwood	5	34	6	45
Hampton	8	15	10	33
Horry	0	0	0	0
Jasper	6	8	2	16
Kershaw	10	15	22	47
Lancaster	0	0	0	0
Laurens	15	22	10	47
Lee	7	18	10	35
Lexington	21	42	47	110
Marion	21	20	36	77
Marlboro	7	5	8	20
McCormick	3	3	5	11
Newberry	5	12	11	28
Oconee	0	71	13	84
Orangeburg	39	54	18	111
Pickens	27	42	14	83
Richland	72	81	75	228
Saluda	4	3	7	14
Spartanburg	40	120	36	196
Sumter	0	152	0	152
Union	3	18	6	27
Williamsburg	30	35	31	96
York	0	0	0	0
Total	724	1,488	788	3,000

CURRENT TOP 10 COUNTIES BY WAIVER ENROLLMENT



HCBS WAIVER UTILIZATION

Waiver Service	Total
Community Choices	2,959
HIV/AIDS	40
Mechanical Ventilator Dependent	1
Total	3,000

Sources: SCDHHS Medicaid Management Information System, CMS Monthly Full Enrollment Data File (Updated August 2020)

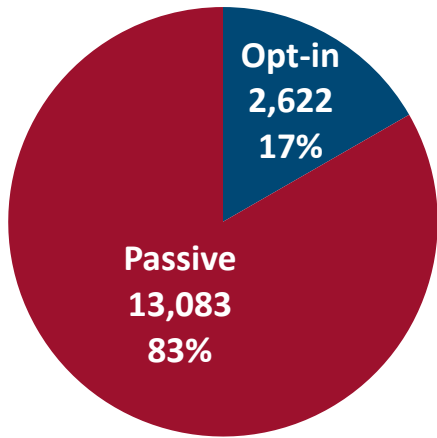
September 2020

September 2020 Active Enrollments

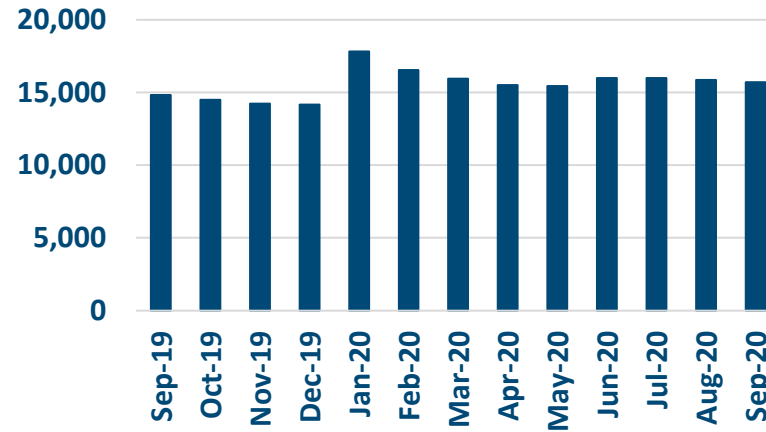


Enrollment Breakdown by Source

OPT-IN VS. PASSIVE ENROLLMENTS



TOTAL ENROLLMENT BY MONTH



September Active Enrollments
15,705

August Active Enrollments
15,867

Monthly Enrollment Change
-1%

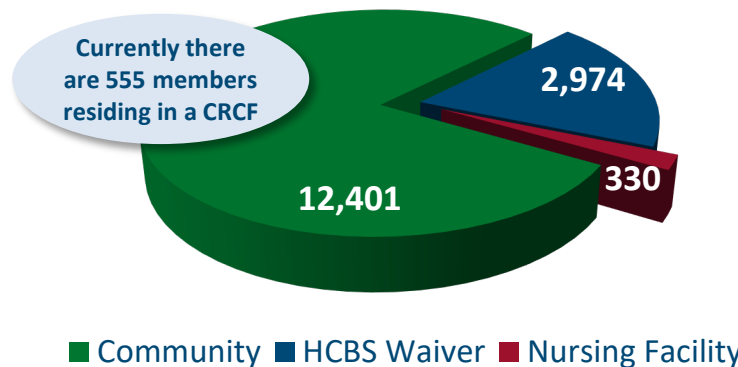
Nursing Facility Usage and Enrollee Demographics

NURSING FACILITY UTILIZATION

Type of Stay	Total
Custodial	330
Non-Custodial*	190
Total	520

* Portions of this chart are self-reported MMP data.

ENROLLEE POPULATION BREAKDOWN



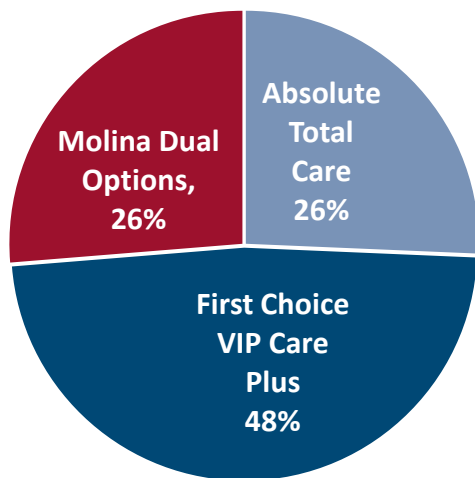
Beneficiary Assistance

Healthy Connections Prime's partner, SC Thrive, is available to answer beneficiary and caregiver questions on the program or to help with enrollment. Please click here to learn more. You can also call (800) 726-8774 (TTY/TDD:711). They are available Monday to Friday, 8:30 a.m. - 5:00 p.m. This call is free.

September 2020 Active Enrollments

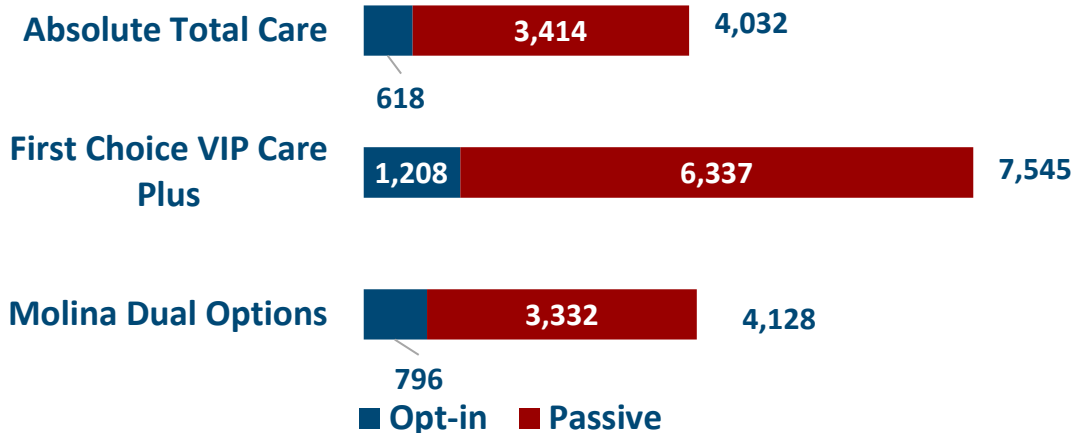


Enrollment by Plan

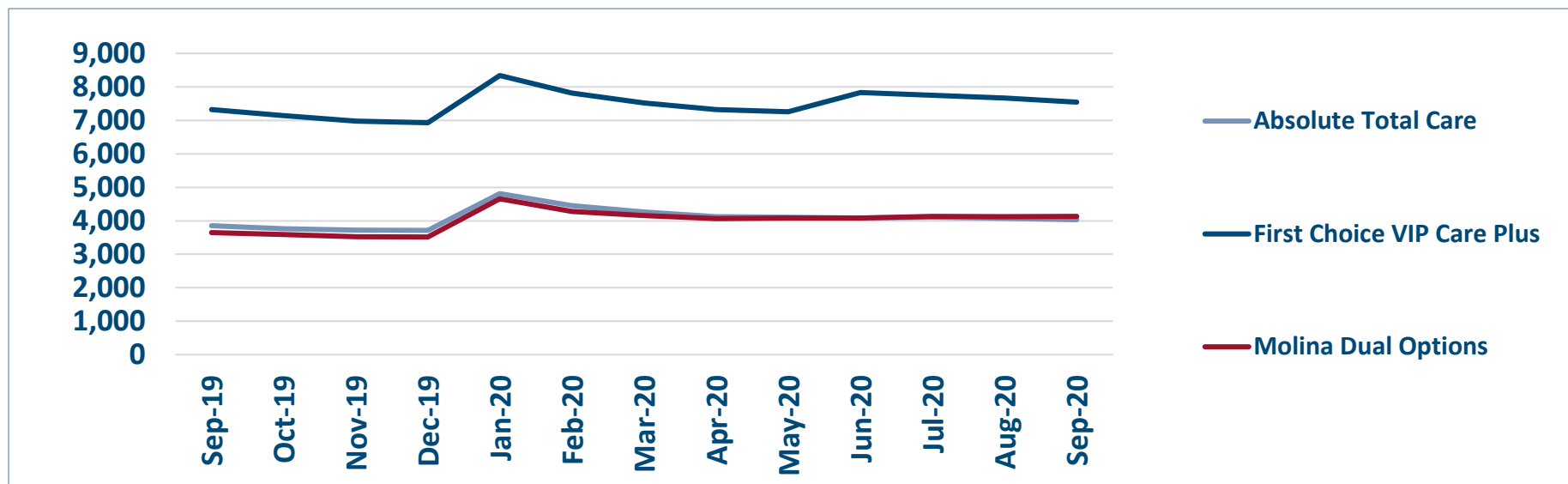


ENROLLMENT SOURCE BY PLAN

Total: 15,705



Monthly Enrollment By Plan

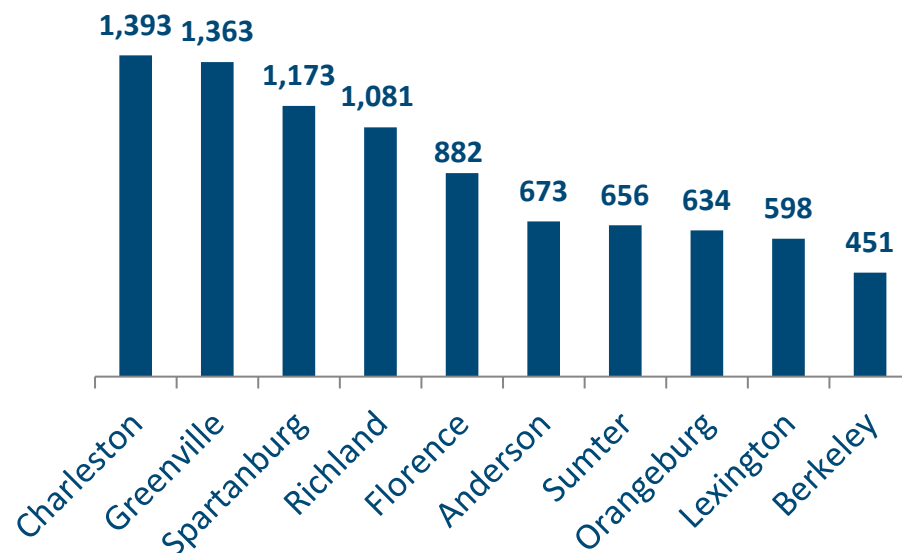


Healthy Connections Prime Active Enrollment

Sep 2020

County	Absolute Total Care	First Choice VIP Care Plus	Molina Dual Options	County Total
Abbeville	28	67	35	130
Aiken	0	296	15	311
Allendale	19	34	29	82
Anderson	76	511	86	673
Bamberg	47	41	44	132
Barnwell	43	48	54	145
Beaufort	138	192	0	330
Berkeley	227	217	7	451
Calhoun	22	23	40	85
Charleston	463	486	444	1,393
Cherokee	0	267	6	273
Chester	51	47	66	164
Chesterfield	93	90	93	276
Clarendon	87	99	44	230
Colleton	72	72	102	246
Darlington	0	0	0	0
Dillon	87	84	97	268
Dorchester	0	215	0	215
Edgefield	28	34	44	106
Fairfield	34	68	60	162
Florence	268	294	320	882
Georgetown	140	179	46	365
Greenville	410	480	473	1,363
Greenwood	28	222	26	276
Hampton	53	59	48	160
Horry	0	0	0	0
Jasper	61	43	17	121
Kershaw	67	113	118	298
Lancaster	0	0	0	0
Laurens	78	139	110	327
Lee	46	58	65	169
Lexington	116	182	300	598
Marion	83	84	117	284
Marlboro	69	65	76	210
McCormick	10	26	19	55
Newberry	35	64	71	170
Oconee	0	265	57	322
Orangeburg	257	290	87	634
Pickens	111	160	86	357
Richland	301	394	386	1,081
Saluda	20	35	35	90
Spartanburg	242	665	266	1,173
Sumter	0	656	0	656
Union	22	84	38	144
Williamsburg	100	97	101	298
York	0	0	0	0
Total	4,032	7,545	4,128	15,705

TOP 10 COUNTIES BY ENROLLMENT



HEALTHY CONNECTIONS PRIME COUNTY PARTICIPATION



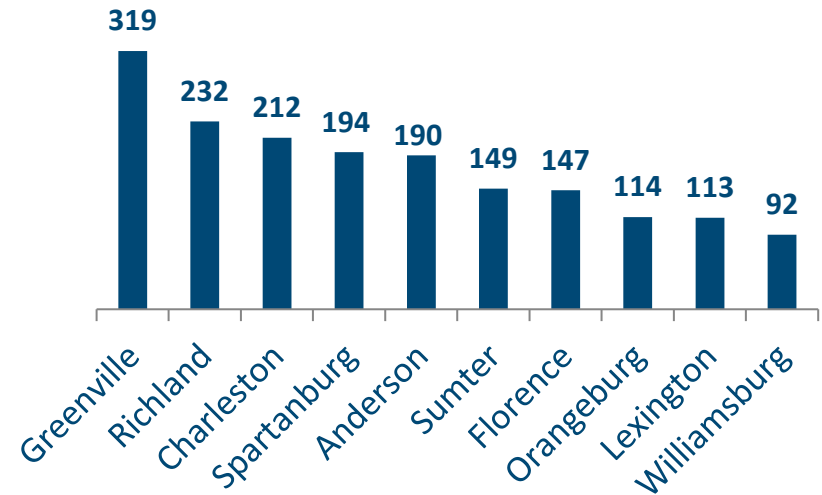
Sources: SCDHHS Medicaid Management Information System, CMS Monthly Full Enrollment Data File (Updated September 2020)

Healthy Connections Prime HCBS Waiver Enrollment

Sep 2020

County	Absolute Total Care	First Choice VIP Care Plus	Molina Dual Options	County Total
Abbeville	8	16	8	32
Aiken	0	29	0	29
Allendale	5	5	11	21
Anderson	20	139	31	190
Bamberg	9	7	6	22
Barnwell	7	8	15	30
Beaufort	17	30	0	47
Berkeley	28	34	1	63
Calhoun	3	5	9	17
Charleston	56	71	85	212
Cherokee	0	35	0	35
Chester	5	6	13	24
Chesterfield	7	8	12	27
Clarendon	27	23	8	58
Colleton	9	12	11	32
Darlington	0	0	0	0
Dillon	12	20	15	47
Dorchester	0	35	0	35
Edgefield	5	3	5	13
Fairfield	9	17	16	42
Florence	43	51	53	147
Georgetown	36	35	6	77
Greenville	93	121	105	319
Greenwood	5	34	6	45
Hampton	8	15	11	34
Horry	0	0	0	0
Jasper	6	8	1	15
Kershaw	11	15	23	49
Lancaster	0	0	0	0
Laurens	14	22	10	46
Lee	6	18	10	34
Lexington	19	41	53	113
Marion	21	20	34	75
Marlboro	7	5	8	20
McCormick	4	3	5	12
Newberry	5	12	11	28
Oconee	0	72	13	85
Orangeburg	40	55	19	114
Pickens	26	41	13	80
Richland	72	83	77	232
Saluda	3	3	7	13
Spartanburg	42	119	33	194
Sumter	0	149	0	149
Union	2	16	7	25
Williamsburg	30	33	29	92
York	0	0	0	0
Total	720	1,474	780	2,974

CURRENT TOP 10 COUNTIES BY WAIVER ENROLLMENT



HCBS WAIVER UTILIZATION

Waiver Service	Total
Community Choices	2,931
HIV/AIDS	41
Mechanical Ventilator Dependent	2
Total	2,974

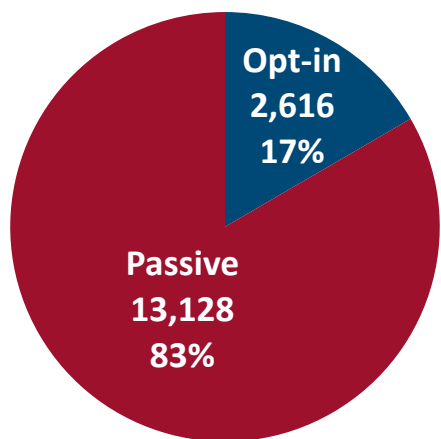
October 2020

October 2020 Active Enrollments

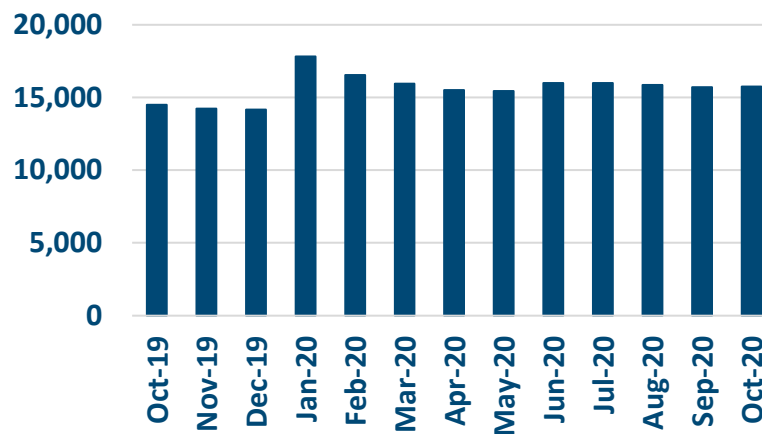


Enrollment Breakdown by Source

OPT-IN VS. PASSIVE ENROLLMENTS



TOTAL ENROLLMENT BY MONTH



October Active Enrollments
15,744

September Active Enrollments
15,705

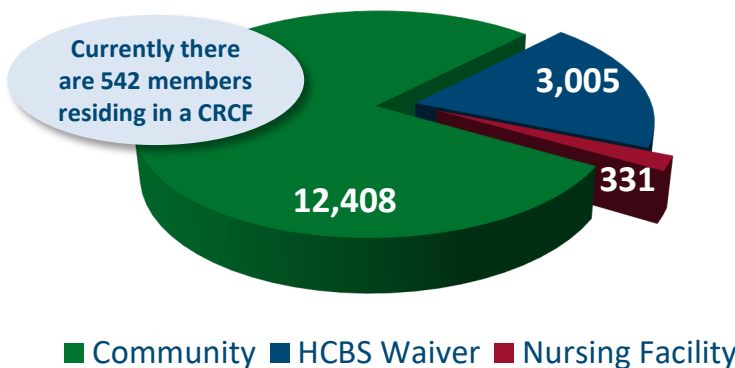
Monthly Enrollment Change
0%

Nursing Facility Usage and Enrollee Demographics

NURSING FACILITY UTILIZATION

Type of Stay	Total
Custodial	331
Non-Custodial*	180
Total	511

ENROLLEE POPULATION BREAKDOWN



New Member Stories

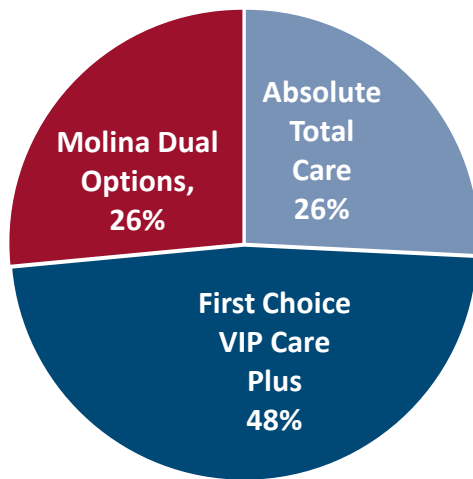
Healthy Connections Prime has recently added new member stories to our website. These new stories were gathered from our MMPs over the last year. They help to demonstrate the value of the program to our members and their caregivers as well as showcase the efforts of the hardworking teams behind each MMP. To see the new stories, please visit [this link](#).

* Portions of this chart are self-reported MMP data.

October 2020 Active Enrollments

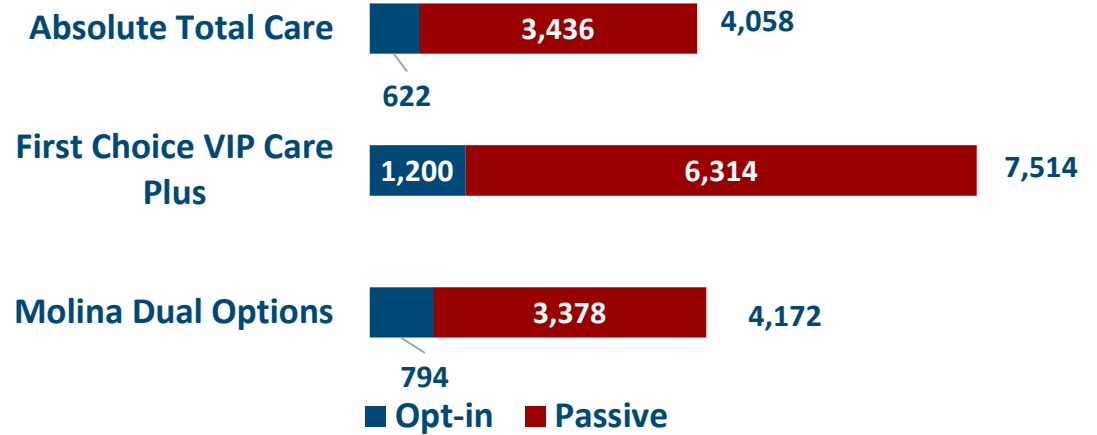


Enrollment by Plan

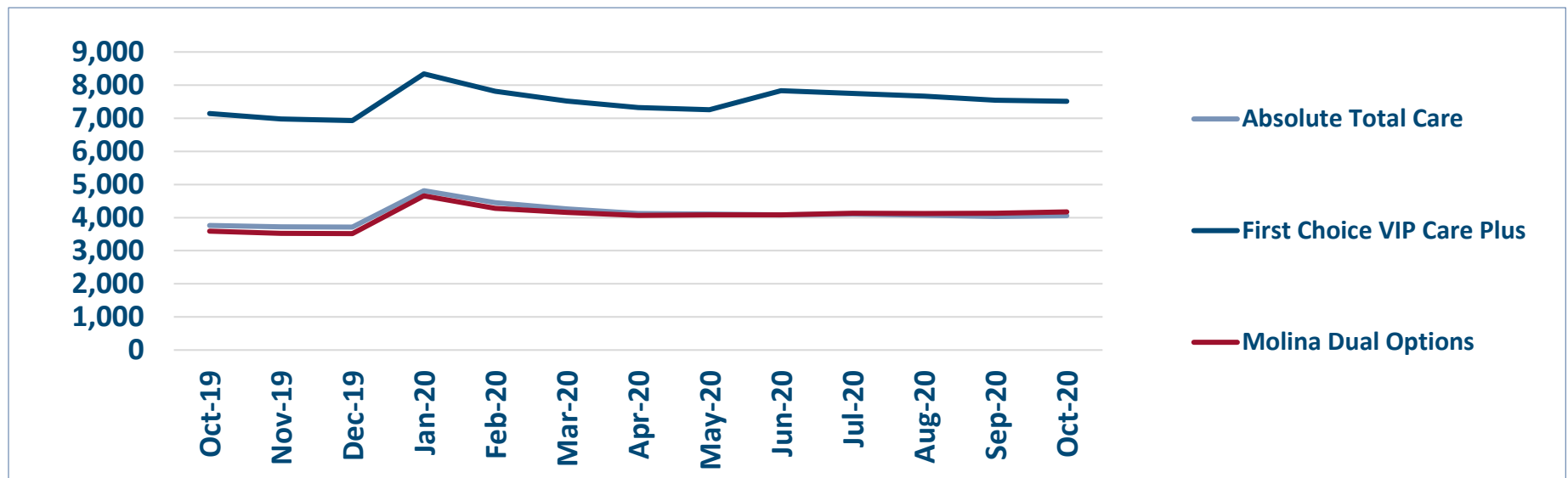


ENROLLMENT SOURCE BY PLAN

Total: 15,744



Monthly Enrollment By Plan



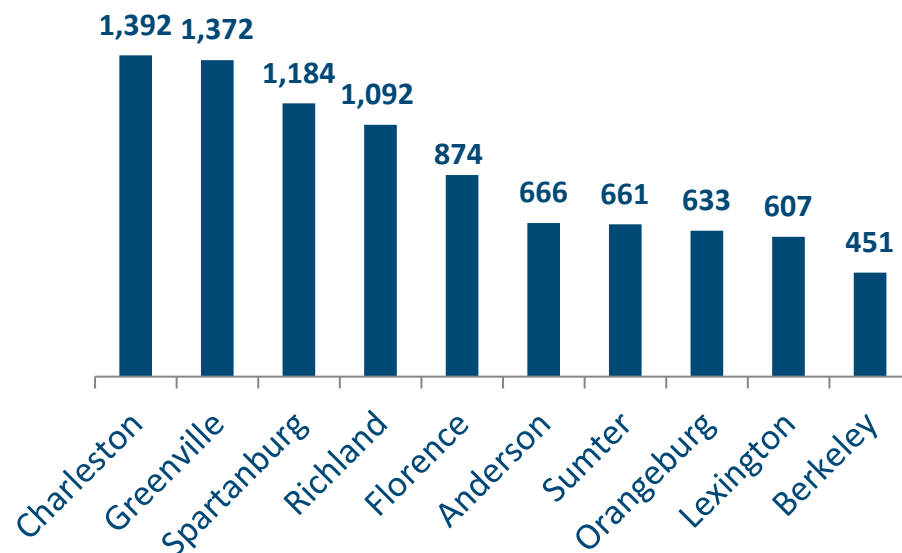
Sources: SCDHHS Medicaid Management Information System, CMS Monthly Full Enrollment Data File (Updated October 2020)

Healthy Connections Prime Active Enrollment

Oct 2020

County	Absolute Total Care	First Choice VIP Care Plus	Molina Dual Options	County Total
Abbeville	29	67	35	131
Aiken	0	288	22	310
Allendale	19	33	29	81
Anderson	77	501	88	666
Bamberg	47	42	44	133
Barnwell	43	49	54	146
Beaufort	140	189	0	329
Berkeley	225	218	8	451
Calhoun	23	22	39	84
Charleston	461	485	446	1,392
Cherokee	2	265	5	272
Chester	53	45	68	166
Chesterfield	91	86	93	270
Clarendon	86	97	47	230
Colleton	72	73	107	252
Darlington	0	0	0	0
Dillon	84	82	99	265
Dorchester	5	213	2	220
Edgefield	28	34	44	106
Fairfield	34	69	59	162
Florence	270	289	315	874
Georgetown	139	175	48	362
Greenville	417	481	474	1,372
Greenwood	28	218	28	274
Hampton	54	60	50	164
Horry	0	0	0	0
Jasper	60	43	18	121
Kershaw	69	115	122	306
Lancaster	0	0	0	0
Laurens	79	140	109	328
Lee	46	58	63	167
Lexington	119	185	303	607
Marion	84	82	117	283
Marlboro	71	66	80	217
McCormick	11	26	18	55
Newberry	36	62	70	168
Oconee	0	259	58	317
Orangeburg	252	292	89	633
Pickens	112	163	88	363
Richland	303	399	390	1,092
Saluda	19	35	34	88
Spartanburg	247	669	268	1,184
Sumter	0	661	0	661
Union	23	84	39	146
Williamsburg	100	94	102	296
York	0	0	0	0
Total	4,058	7,514	4,172	15,744

TOP 10 COUNTIES BY ENROLLMENT



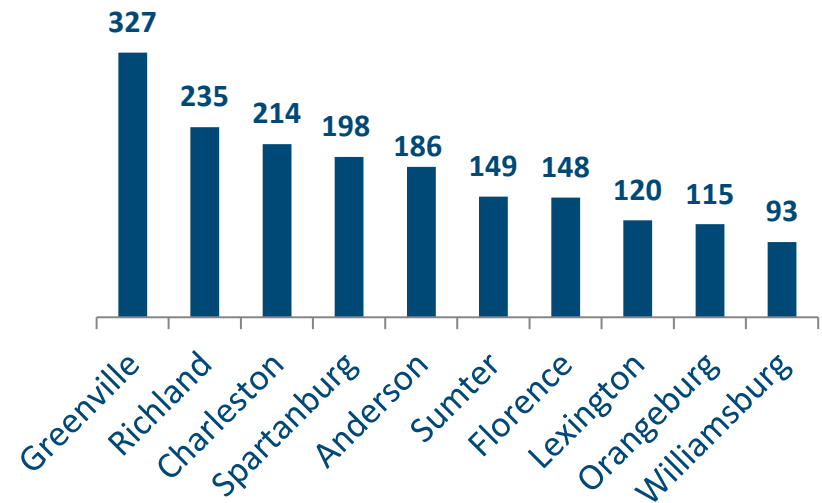
HEALTHY CONNECTIONS PRIME COUNTY PARTICIPATION



Sources: SCDHHS Medicaid Management Information System, CMS Monthly Full Enrollment Data File (Updated October 2020)

Healthy Connections Prime HCBS Waiver Enrollment				Oct 2020
County	Absolute Total Care	First Choice VIP Care Plus	Molina Dual Options	County Total
Abbeville	8	17	7	32
Aiken	0	31	1	32
Allendale	5	6	11	22
Anderson	19	136	31	186
Bamberg	8	7	5	20
Barnwell	8	7	14	29
Beaufort	19	31	0	50
Berkeley	29	35	1	65
Calhoun	3	5	9	17
Charleston	55	74	85	214
Cherokee	1	33	0	34
Chester	5	5	13	23
Chesterfield	7	7	12	26
Clarendon	26	22	8	56
Colleton	9	12	12	33
Darlington	0	0	0	0
Dillon	11	19	17	47
Dorchester	0	36	0	36
Edgefield	5	3	5	13
Fairfield	9	17	15	41
Florence	43	50	55	148
Georgetown	35	33	7	75
Greenville	97	124	106	327
Greenwood	7	33	6	46
Hampton	9	16	11	36
Horry	0	0	0	0
Jasper	6	9	1	16
Kershaw	12	15	24	51
Lancaster	0	0	0	0
Laurens	14	21	10	45
Lee	6	19	8	33
Lexington	20	46	54	120
Marion	23	20	35	78
Marlboro	8	5	9	22
McCormick	5	3	4	12
Newberry	5	11	11	27
Oconee	0	70	14	84
Orangeburg	40	55	20	115
Pickens	26	40	13	79
Richland	75	86	74	235
Saluda	3	4	7	14
Spartanburg	43	120	35	198
Sumter	0	149	0	149
Union	3	16	7	26
Williamsburg	30	33	30	93
York	0	0	0	0
Total	737	1,481	787	3,005

CURRENT TOP 10 COUNTIES BY WAIVER ENROLLMENT



HCBS WAIVER UTILIZATION

Waiver Service	Total
Community Choices	2,961
HIV/AIDS	42
Mechanical Ventilator Dependent	2
Total	3,005

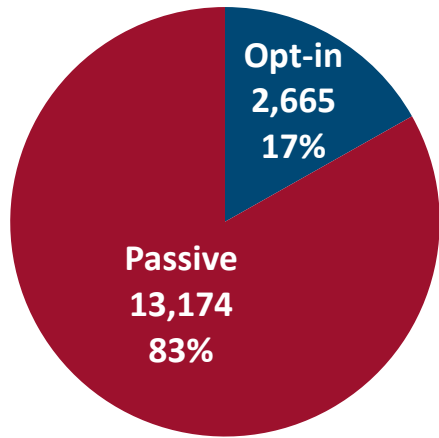
November 2020

November 2020 Active Enrollments

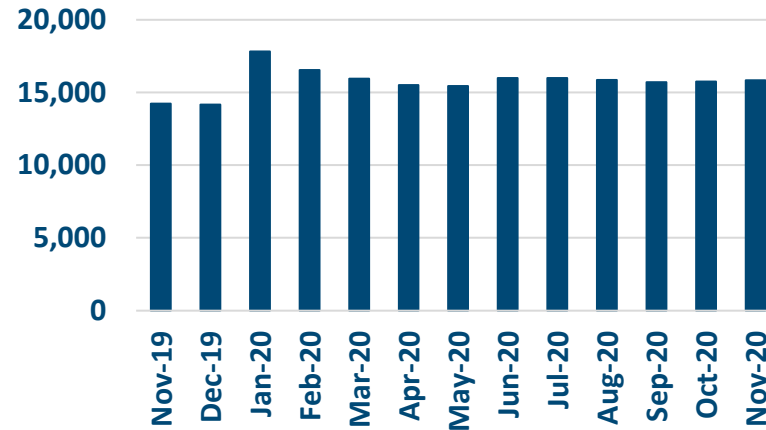


Enrollment Breakdown by Source

OPT-IN VS. PASSIVE ENROLLMENTS



TOTAL ENROLLMENT BY MONTH



November Active Enrollments
15,839

October Active Enrollments
15,744

Monthly Enrollment Change
1%

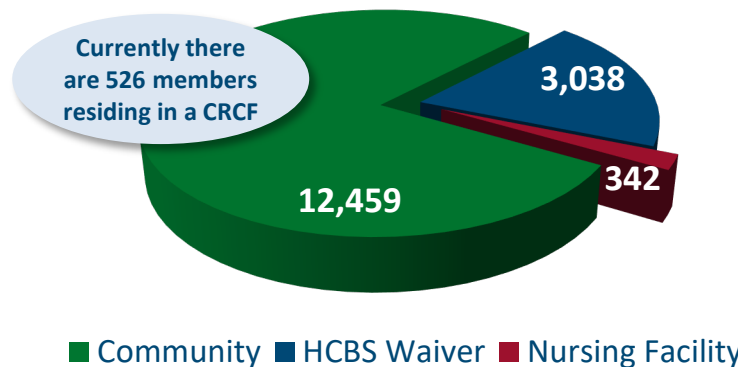
Nursing Facility Usage and Enrollee Demographics

NURSING FACILITY UTILIZATION

Type of Stay	Total
Custodial	342
Non-Custodial*	172
Total	514

* Portions of this chart are self-reported MMP data.

ENROLLEE POPULATION BREAKDOWN



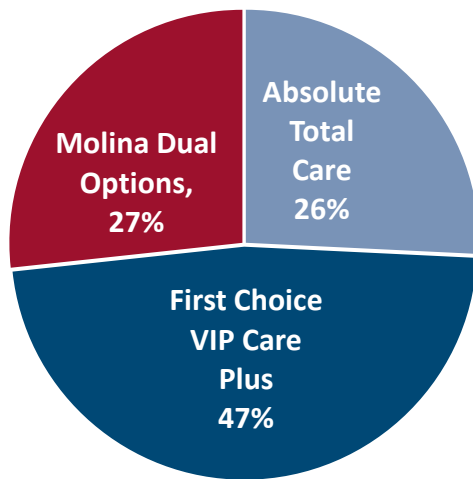
Member and Advocate Toolkit

Please visit the [Member and Advocate Toolkit](#) on our website to access useful materials to help beneficiaries and their caregivers learn more about Healthy Connections Prime. Examples of these documents include: "Plan Coverage By County", "What Is Palliative Care?", and "Passive Enrollment – What to Expect."

November 2020 Active Enrollments

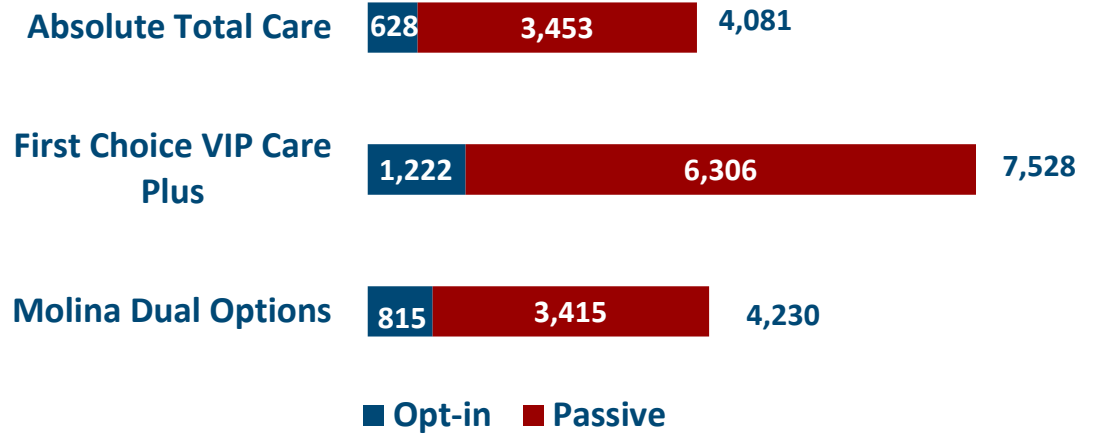


Enrollment by Plan

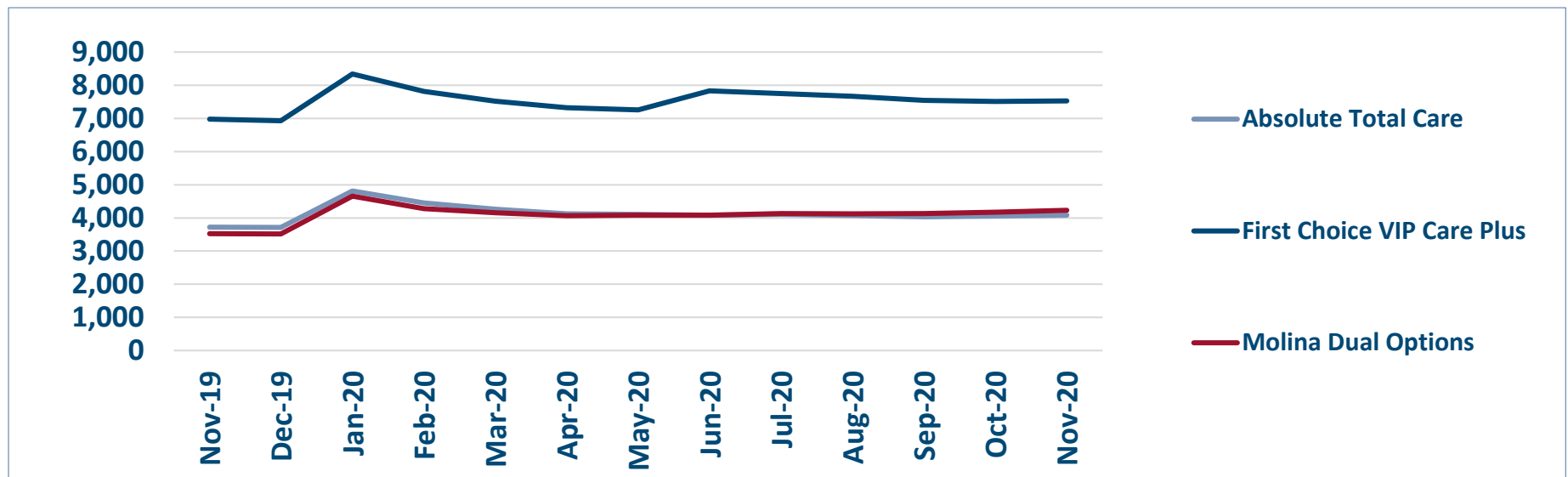


ENROLLMENT SOURCE BY PLAN

Total: 15,839



Monthly Enrollment By Plan



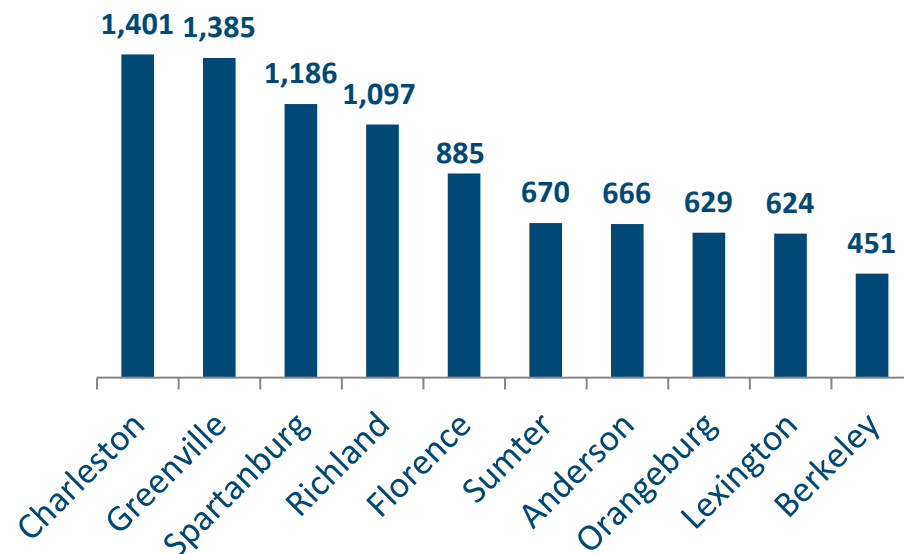
Sources: SCDHHS Medicaid Management Information System, CMS Monthly Full Enrollment Data File (Updated November 2020)

Healthy Connections Prime Active Enrollment

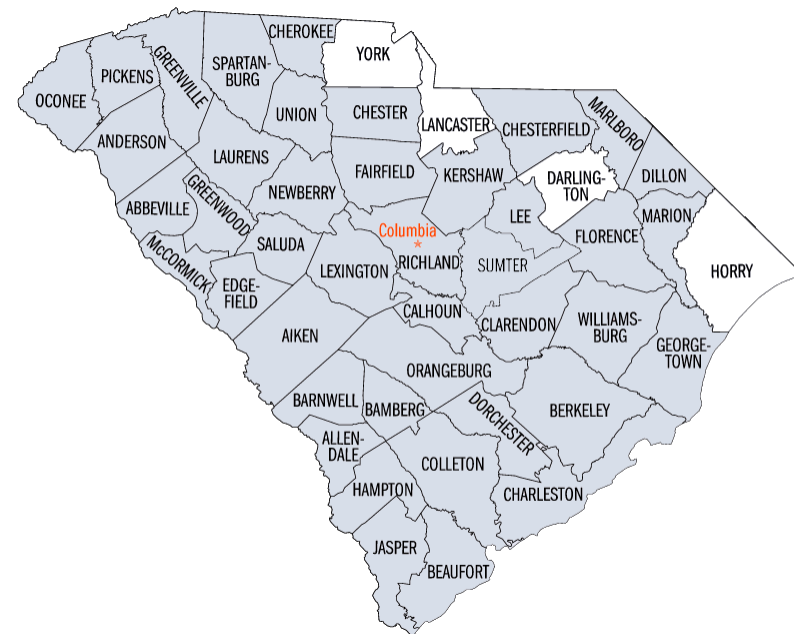
Nov 2020

County	Absolute Total Care	First Choice VIP Care Plus	Molina Dual Options	County Total
Abbeville	29	65	35	129
Aiken	0	282	27	309
Allendale	19	34	29	82
Anderson	81	495	90	666
Bamberg	46	39	45	130
Barnwell	44	48	55	147
Beaufort	145	195	0	340
Berkeley	223	218	10	451
Calhoun	23	22	39	84
Charleston	467	488	446	1,401
Cherokee	4	256	6	266
Chester	55	44	67	166
Chesterfield	89	88	93	270
Clarendon	86	98	50	234
Colleton	74	75	107	256
Darlington	0	0	0	0
Dillon	85	82	100	267
Dorchester	6	212	0	218
Edgefield	29	33	44	106
Fairfield	34	69	59	162
Florence	268	298	319	885
Georgetown	140	183	50	373
Greenville	420	481	484	1,385
Greenwood	29	213	29	271
Hampton	52	64	51	167
Horry	0	0	0	0
Jasper	60	41	19	120
Kershaw	67	115	122	304
Lancaster	0	0	0	0
Laurens	80	140	110	330
Lee	45	56	63	164
Lexington	125	191	308	624
Marion	84	85	119	288
Marlboro	71	67	82	220
McCormick	12	27	19	58
Newberry	37	59	70	166
Oconee	0	261	63	324
Orangeburg	251	291	87	629
Pickens	110	160	89	359
Richland	300	403	394	1,097
Saluda	19	34	33	86
Spartanburg	247	664	275	1,186
Sumter	0	670	0	670
Union	24	86	40	150
Williamsburg	101	96	102	299
York	0	0	0	0
Total	4,081	7,528	4,230	15,839

TOP 10 COUNTIES BY ENROLLMENT



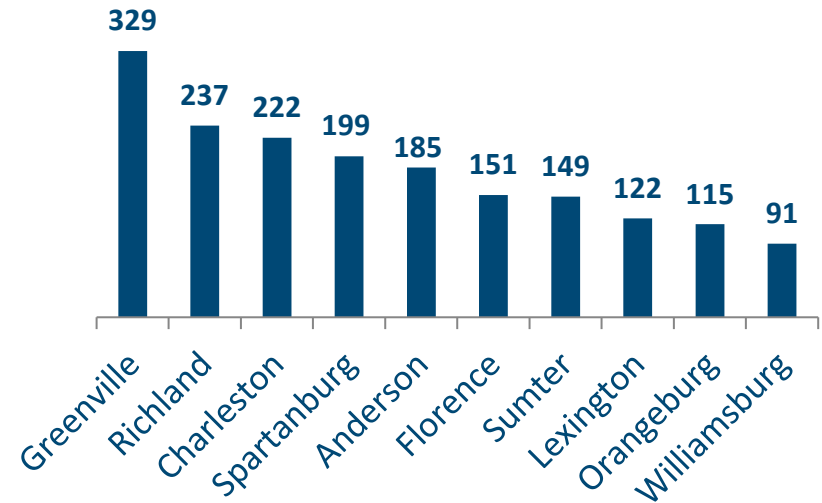
HEALTHY CONNECTIONS PRIME COUNTY PARTICIPATION



Sources: SCDHHS Medicaid Management Information System, CMS Monthly Full Enrollment Data File (Updated November 2020)

Healthy Connections Prime HCBS Waiver Enrollment				Nov 2020
County	Absolute Total Care	First Choice VIP Care Plus	Molina Dual Options	County Total
Abbeville	8	17	7	32
Aiken	0	34	1	35
Allendale	5	6	11	22
Anderson	20	135	30	185
Bamberg	8	5	5	18
Barnwell	8	6	14	28
Beaufort	21	34	0	55
Berkeley	30	35	2	67
Calhoun	3	6	9	18
Charleston	57	78	87	222
Cherokee	2	29	0	31
Chester	5	5	12	22
Chesterfield	7	8	11	26
Clarendon	27	23	8	58
Colleton	10	12	12	34
Darlington	0	0	0	0
Dillon	12	18	18	48
Dorchester	0	35	0	35
Edgefield	5	3	5	13
Fairfield	10	16	14	40
Florence	39	54	58	151
Georgetown	34	36	8	78
Greenville	97	125	107	329
Greenwood	6	36	7	49
Hampton	9	16	11	36
Horry	0	0	0	0
Jasper	6	8	1	15
Kershaw	12	18	25	55
Lancaster	0	0	0	0
Laurens	14	21	10	45
Lee	6	19	9	34
Lexington	21	47	54	122
Marion	22	23	36	81
Marlboro	9	5	9	23
McCormick	5	3	4	12
Newberry	5	10	11	26
Oconee	0	67	16	83
Orangeburg	40	56	19	115
Pickens	27	38	13	78
Richland	72	91	74	237
Saluda	3	3	7	13
Spartanburg	44	121	34	199
Sumter	0	149	0	149
Union	3	17	8	28
Williamsburg	29	32	30	91
York	0	0	0	0
Total	741	1,500	797	3,038

CURRENT TOP 10 COUNTIES BY WAIVER ENROLLMENT



HCBS WAIVER UTILIZATION

Waiver Service	Total
Community Choices	2,994
HIV/AIDS	42
Mechanical Ventilator Dependent	2
Total	3,038

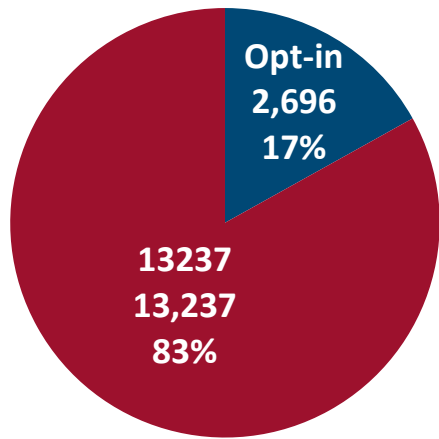
December 2020

December 2020 Active Enrollments

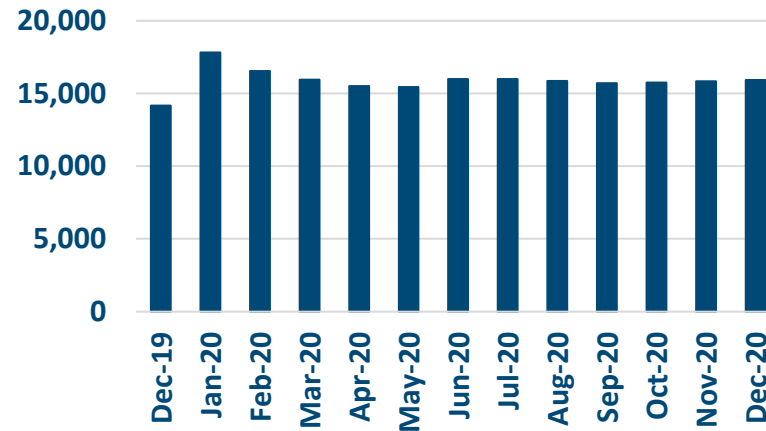


Enrollment Breakdown by Source

OPT-IN VS. PASSIVE ENROLLMENTS



TOTAL ENROLLMENT BY MONTH



December Active Enrollments
15,933

November Active Enrollments
15,839

Monthly Enrollment Change
1%

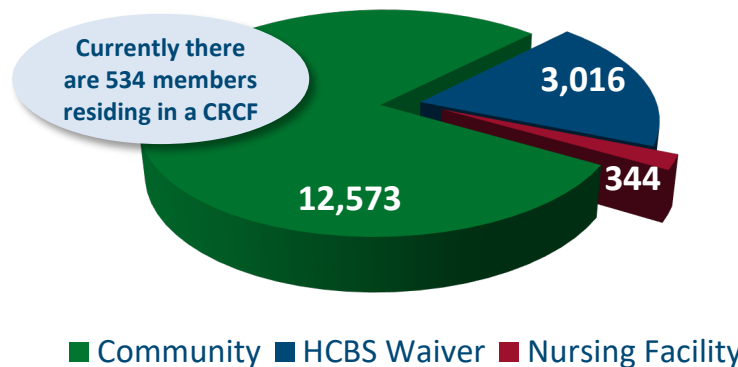
Nursing Facility Usage and Enrollee Demographics

NURSING FACILITY UTILIZATION

Type of Stay	Total
Custodial	344
Non-Custodial*	146
Total	490

* Portions of this chart are self-reported MMP data.

ENROLLEE POPULATION BREAKDOWN



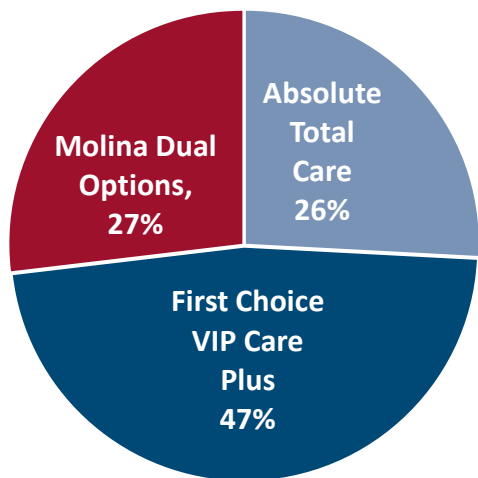
New Stakeholder Update

Please click [here](#) to access our December 2020 Stakeholder Update. This update contains highlights regarding the program's expansion into Darlington and Horry Counties starting January 1, 2021, SC Thrive's recent community outreach efforts and a reminder about the updated member stories

December 2020 Active Enrollments

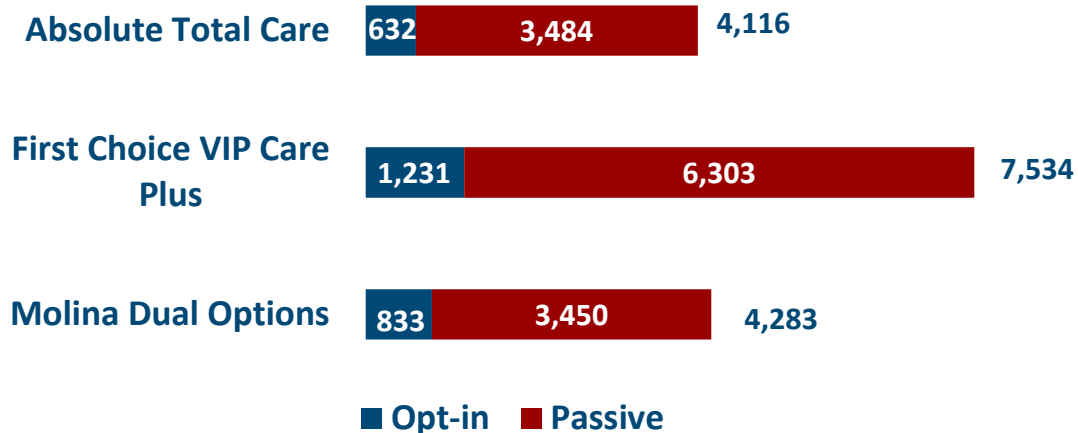


Enrollment by Plan

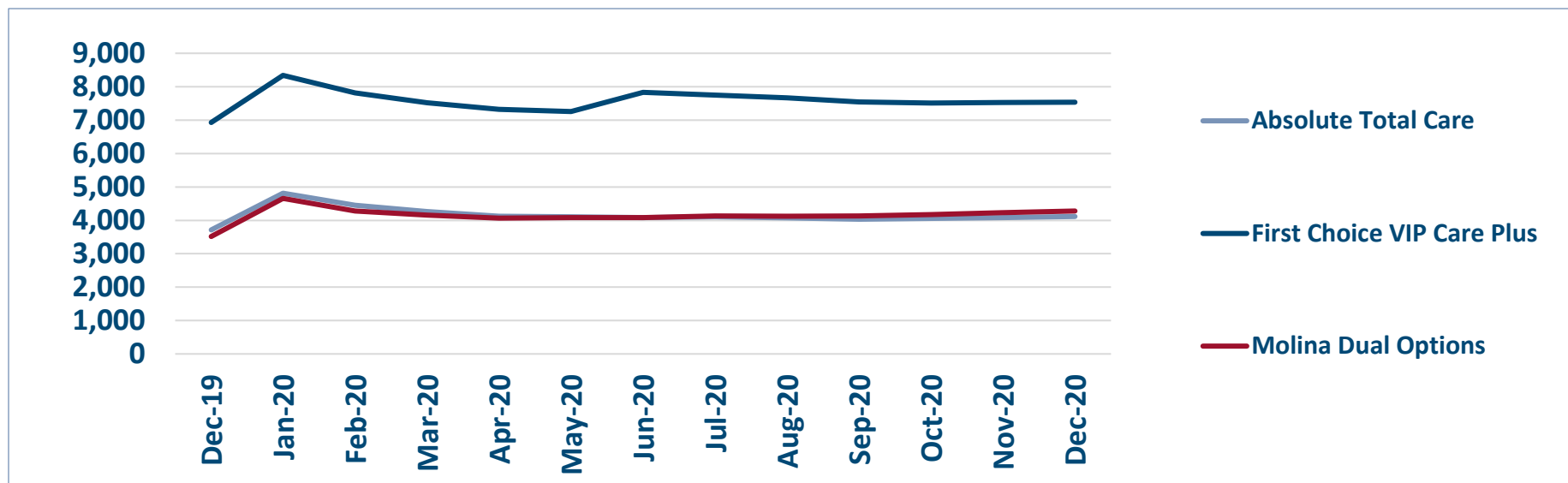


ENROLLMENT SOURCE BY PLAN

Total: 15,933



Monthly Enrollment By Plan

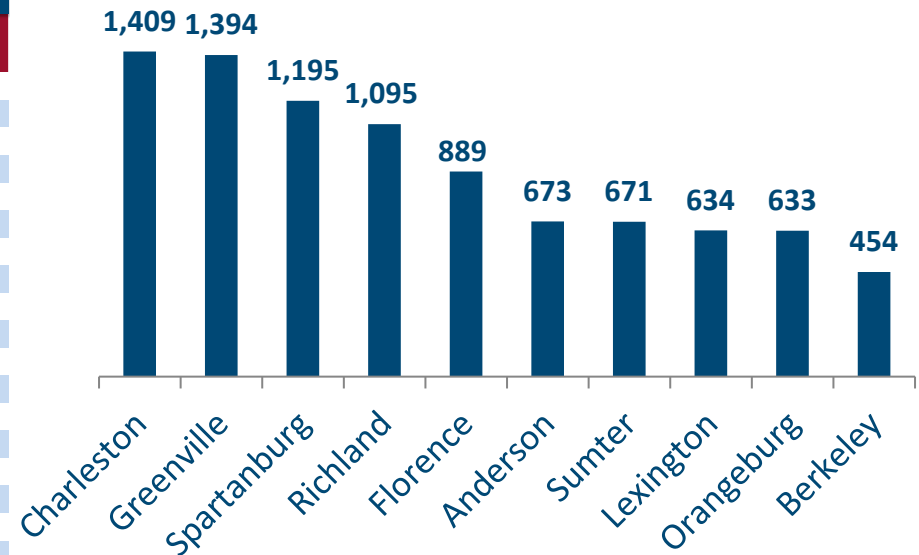


Healthy Connections Prime Active Enrollment

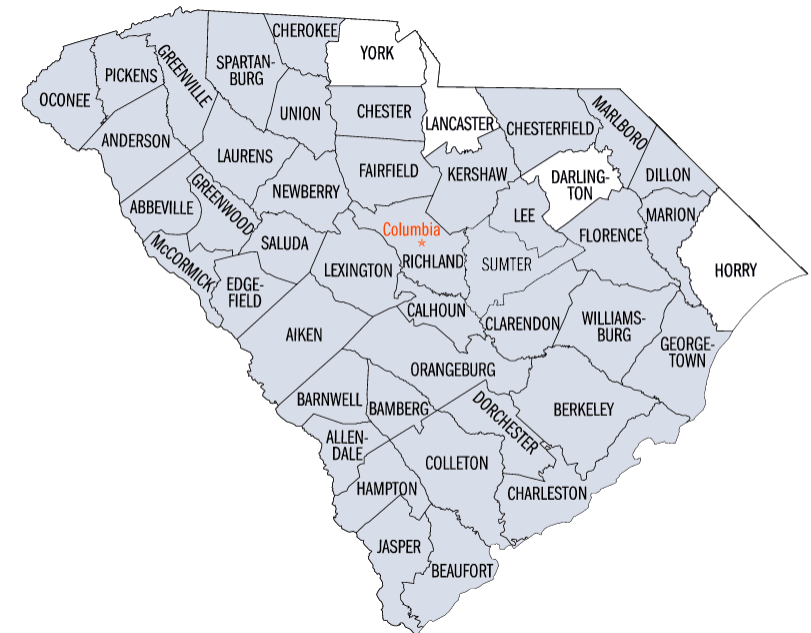
Dec 2020

County	Absolute Total Care	First Choice VIP Care Plus	Molina Dual Options	County Total
Abbeville	29	65	34	128
Aiken	0	278	29	307
Allendale	18	32	29	79
Anderson	79	500	94	673
Bamberg	47	41	46	134
Barnwell	43	47	55	145
Beaufort	146	196	0	342
Berkeley	225	219	10	454
Calhoun	24	22	38	84
Charleston	473	489	447	1,409
Cherokee	6	260	9	275
Chester	57	45	68	170
Chesterfield	92	91	97	280
Clarendon	88	96	51	235
Colleton	77	76	110	263
Darlington	0	0	0	0
Dillon	85	80	99	264
Dorchester	12	213	0	225
Edgefield	31	35	45	111
Fairfield	34	69	60	163
Florence	270	296	323	889
Georgetown	142	177	53	372
Greenville	420	484	490	1,394
Greenwood	29	218	28	275
Hampton	49	60	51	160
Horry	0	0	0	0
Jasper	58	42	19	119
Kershaw	69	117	125	311
Lancaster	0	0	0	0
Laurens	80	139	109	328
Lee	44	57	65	166
Lexington	129	190	315	634
Marion	82	84	118	284
Marlboro	72	69	83	224
McCormick	12	27	19	58
Newberry	37	61	69	167
Oconee	0	260	66	326
Orangeburg	253	290	90	633
Pickens	110	158	88	356
Richland	300	397	398	1,095
Saluda	19	35	34	88
Spartanburg	249	668	278	1,195
Sumter	0	671	0	671
Union	25	86	38	149
Williamsburg	101	94	103	298
York	0	0	0	0
Total	4,116	7,534	4,283	15,933

TOP 10 COUNTIES BY ENROLLMENT



HEALTHY CONNECTIONS PRIME COUNTY PARTICIPATION

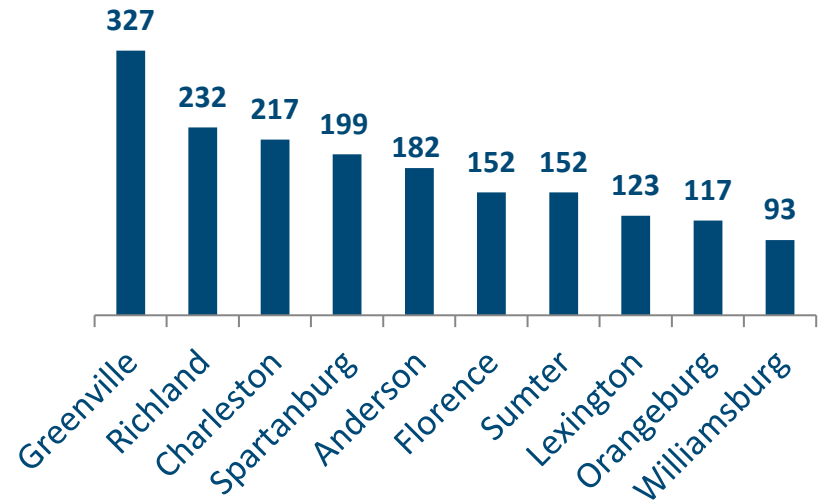


Sources: SCDHHS Medicaid Management Information System, CMS Monthly Full Enrollment Data File (Updated December 2020)

Healthy Connections Prime HCBS Waiver Enrollment Dec 2020

County	Absolute Total Care	First Choice VIP Care Plus	Molina Dual Options	County Total
Abbeville	7	16	7	30
Aiken	0	31	1	32
Allendale	4	6	11	21
Anderson	17	134	31	182
Bamberg	8	5	6	19
Barnwell	8	6	14	28
Beaufort	22	35	0	57
Berkeley	30	35	1	66
Calhoun	4	6	8	18
Charleston	56	73	88	217
Cherokee	2	31	0	33
Chester	5	5	12	22
Chesterfield	7	9	12	28
Clarendon	27	22	8	57
Colleton	10	12	11	33
Darlington	0	0	0	0
Dillon	11	17	17	45
Dorchester	0	36	0	36
Edgefield	5	3	5	13
Fairfield	10	16	14	40
Florence	40	56	56	152
Georgetown	33	31	7	71
Greenville	98	123	106	327
Greenwood	7	35	7	49
Hampton	8	16	11	35
Horry	0	0	0	0
Jasper	5	9	1	15
Kershaw	12	20	25	57
Lancaster	0	0	0	0
Laurens	13	20	10	43
Lee	6	19	9	34
Lexington	21	45	57	123
Marion	20	21	34	75
Marlboro	9	6	8	23
McCormick	5	3	4	12
Newberry	5	11	11	27
Oconee	0	65	17	82
Orangeburg	41	55	21	117
Pickens	26	38	13	77
Richland	71	86	75	232
Saluda	3	4	7	14
Spartanburg	45	122	34	201
Sumter	0	152	0	152
Union	4	17	7	28
Williamsburg	29	32	32	93
York	0	0	0	0
Total	734	1,484	798	3,016

CURRENT TOP 10 COUNTIES BY WAIVER ENROLLMENT



HCBS WAIVER UTILIZATION

Waiver Service	Total
Community Choices	2,972
HIV/AIDS	42
Mechanical Ventilator Dependent	2
Total	3,016