

January 2022 Stakeholder Update



Program Expansion to All Counties

As a reminder, as of January 1, 2022, Healthy Connections Prime is available in every county in South Carolina! We are also pleased to announce that coverage has expanded in two Medicaid-Medicare Plans (MMPs), impacting a total of nine counties combined.

- **Molina Dual Options’ new county coverage:**
 - Beaufort
 - Darlington
 - Dorchester
 - Horry
 - Lancaster
 - Sumter
 - York
- **Wellcare Prime by Absolute Total Care’s new county coverage:**
 - Aiken
 - Lancaster
 - Oconee
 - Sumter
 - York

Healthy Connections Prime Coverage Area by Plan			
County	Wellcare Prime by Absolute Total Care	First Choice VIP Care Plus	Molina Dual Options
Abbeville	✓	✓	✓
Aiken	✓	✓	✓
Allendale	✓	✓	✓
Anderson	✓	✓	✓
Bamberg	✓	✓	✓
Barnwell	✓	✓	✓
Beaufort	✓	✓	✓
Berkeley	✓	✓	✓
Calhoun	✓	✓	✓
Charleston	✓	✓	✓
Cherokee	✓	✓	✓
Chester	✓	✓	✓
Chesterfield	✓	✓	✓
Clarendon	✓	✓	✓
Colleton	✓	✓	✓
Darlington	✓	✓	✓
Dillon	✓	✓	✓
Dorchester	✓	✓	✓
Edgefield	✓	✓	✓
Fairfield	✓	✓	✓
Florence	✓	✓	✓
Georgetown	✓	✓	✓
Greenville	✓	✓	✓
Greenwood	✓	✓	✓
Hampton	✓	✓	✓
Horry	✓	✓	✓
Jasper	✓	✓	✓
Kershaw	✓	✓	✓
Lancaster	✓	✓	✓
Laurens	✓	✓	✓
Lee	✓	✓	✓
Lexington	✓	✓	✓
Marion	✓	✓	✓
Marlboro	✓	✓	✓
McCormick	✓	✓	✓
Newberry	✓	✓	✓
Oconee	✓	✓	✓
Orangeburg	✓	✓	✓
Pickens	✓	✓	✓
Richland	✓	✓	✓
Saluda	✓	✓	✓
Spartanburg	✓	✓	✓
Sumter	✓	✓	✓
Union	✓	✓	✓
Williamsburg	✓	✓	✓
York	✓	✓	✓

For a full listing of our latest coverage area by plan, please see the [Plan Coverage by County chart](#).

Education and Outreach Highlights

The Healthy Connections Prime program, through a partnership with SC Thrive, has been rolling out some initiatives to continue growing awareness for the program. You may have already seen some of the following efforts listed below:

- [Senior Spotlight Newsletter](#)
- [Television Spots](#)
- Articles
- Billboards
- Facebook Spots
- Postcards

SC Thrive is a statewide nonprofit organization that exists to lead South Carolinians to stability by providing innovative and efficient access to quality-of-life resources. The primary tool we use toward this goal is an online benefits portal called Thrive Hub where you can apply for multiple benefits at once. Trained Benefits Counselors at food banks, medical service providers, and faith-based service providers throughout the state are available to assist you with some of the benefit applications available in Thrive Hub.

Senior Spotlight Newsletter

Welcome to the Senior Spotlight Newsletter - SC Thrive's newest tool for seniors! We understand the importance of having access to resources designed specifically for you. This quarterly newsletter, which is geared towards seniors and their caretakers, will provide resources and other valuable information that is designed to improve your quality of life over all. We simply hope to provide useful and interesting information that can help you fulfill your needs and live your best life!

We value your input, so please let us know if you find this newsletter helpful and if there is any information you would like to be included in the next issue.

Email us at contact@scthrive.org.

Health Plan Name Change – Absolute Total Care is Now Wellcare Prime by Absolute Total Care

One of our Healthy Connections Prime health plans, Absolute Total Care, has changed its name to **Wellcare Prime by Absolute Total Care**. This name change will not affect current medical benefits or services to members. Please note that as part of the rebranding, Wellcare Prime by Absolute Total Care has an updated logo and color palette so their website and materials will be updated to reflect this change.

Other Updates & Recently Posted Documents

Additional program information is available on the Healthy Connections Prime Program Data page. The most recently posted information is linked below.

- [Healthy Connections Prime Monthly Enrollment Dashboards – Full Year 2021](#)

Join the Healthy Connections Prime Distribution List

Requests to join the Healthy Connections Prime email distribution list can be emailed to prime@scdhhs.gov or submitted [at this link](#).

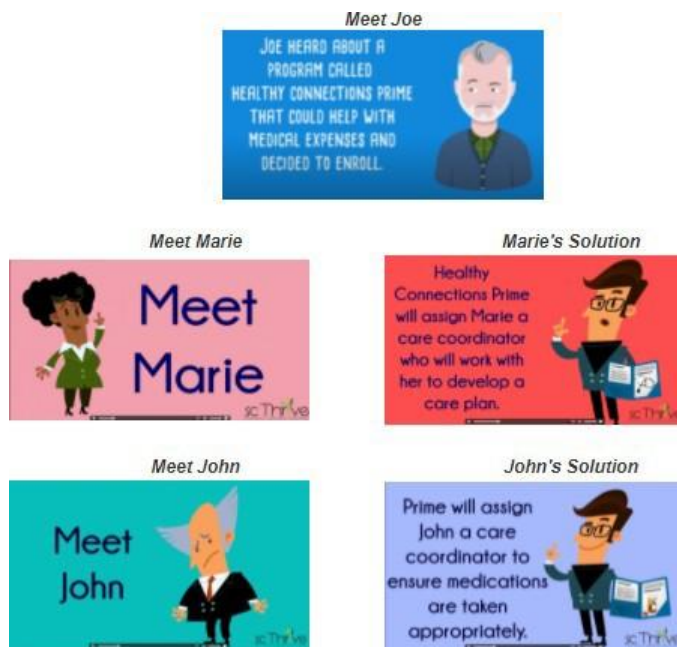
Request a Presentation for More Information

Providers or organizations that are interested in learning more about Healthy Connections Prime and would like to request a free presentation and/or training session can email primeproviders@scdhhs.gov. The email should include your contact information and the desired location and date for the presentation or training.

For More Information and the Latest News

More information about Healthy Connections Prime can be found on our website at <http://www.scdhhs.gov/prime>. The website contains helpful information such as member FAQs, a provider toolkit and program data.

Our [Member and Advocate Materials page](#) provides numerous resources, such as a plan comparison chart and an explanation of important terms. Also included on this page are short videos that can help caregivers and their loved ones learn more about Healthy Connections Prime. Click on [this link](#) and scroll down to “Interactive Scenarios” to access the videos.



Program questions can be directed to the SC Thrive Customer Service Center at (800) 726-8774, Monday-Friday, 8:30 a.m.-5 p.m. TTY users call 711. This call is free. Providers can also email questions to primeproviders@scdhhs.gov.