

Healthy Connections Prime Monthly Enrollment Dashboards

January – April 2024

Table of Contents

<u>Glossary of Key Terms</u>	3
<u>January 2024</u>	5
<u>February 2024</u>	10
<u>March 2024</u>	10
<u>April 2024</u>	10

Glossary of Key Terms

Glossary of Key Terms

- **Active Enrollment:** Members with active coverage under Healthy Connections Prime. This does not include individuals who are enrolled but whose coverage has not started yet.
- **Cancellation:** A request by an individual to be removed from the program **before** the coverage effective date. For example: An individual has been passively enrolled into a Medicare-Medicaid Plan but they ask to leave the program before the coverage effective date. This request will delete the enrollment from all enrollment systems. This would be considered a cancellation.
- **Community:** At home or in a community-based setting, such as a Community Residential Care Facility (CRCF). Not in a nursing facility.
- **Community Residential Care Facility (CRCF):** CRCFs offer room and board and, unlike boarding homes, provide a degree of personal care for a period in excess of 24 consecutive hours for 2 or more persons, 18 years old or older.
- **Custodial Stay:** Member's stay in a nursing facility under an approved Medicaid Long Term Care Stay, and not for temporary rehabilitation.
- **Disenrollment:** A request by an individual to be removed from the program **after** the coverage effective date. For example: An individual has opted into a Medicare-Medicaid Plan but they ask to leave the program after the coverage effective date. This request will end the current enrollment coverage at the end of the month it is submitted. This would be considered a disenrollment.
- **Home and Community Based Services (HCBS) Waiver:** HCBS waivers provide services and supports for persons eligible for nursing home care stay longer in the community (home and community-based settings). Examples of such services and supports are: assistance getting dressed, home delivered meals, and wheelchair ramps. HCBS are offered through one of three waivers: Community Choices, HIV/AIDS, and Mechanical Ventilator Dependent. Plans also offer these services to non-waiver participants based on medical need.
- **Non-Custodial Stay:** A member's stay in a nursing facility for temporary rehabilitation and not for long term care.
- **Opt-in Enrollment:** A request by an eligible individual to actively join a Medicare-Medicaid Plan.
- **Opt-out:** A request by an individual to affirmatively decline passive enrollment into the Healthy Connections Prime program. Once an individual has opted out, the State must document this and exclude him/her from future passive enrollment processing. There are three scenarios where opt-out requests can be received:
 - The individual opts-in or is passively enrolled, and then opts out **before** the enrollment effective date. The State must **cancel** the enrollment along with opting the individual out of the program.
 - The individual opts-in or is passively enrolled, and then opts out **on or after** the enrollment effective date. The State must **disenroll** the individual along with opting the individual out of the program.
 - An individual **has not opted-in** to the program and he/she **has not been passively enrolled** but he/she requests to opt-out. The State must opt the individual out of passive enrollment into the program.
- **Passive Enrollment:** An auto assignment into a Medicare-Medicaid Plan for an eligible individual who has not actively chosen to join the program. Please note that if an individual does not take action to end their coverage, their membership in the program will be considered voluntary.
- **Plan:** A Medicare-Medicaid Plan (MMP) that is offering coverage under Healthy Connections Prime.

For More Information

Please visit our website at <http://www.scdhhs.gov/prime> or call the SC Thrive Customer Service Center at (800) 726-8774, Monday-Friday, 8:30 a.m. – 5 p.m. TTY users call 711. This call is free.

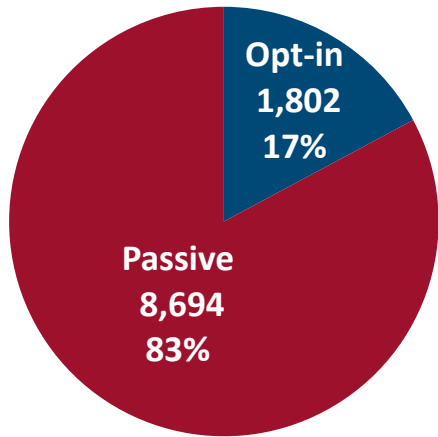
January 2024

January 2024 Active Enrollments

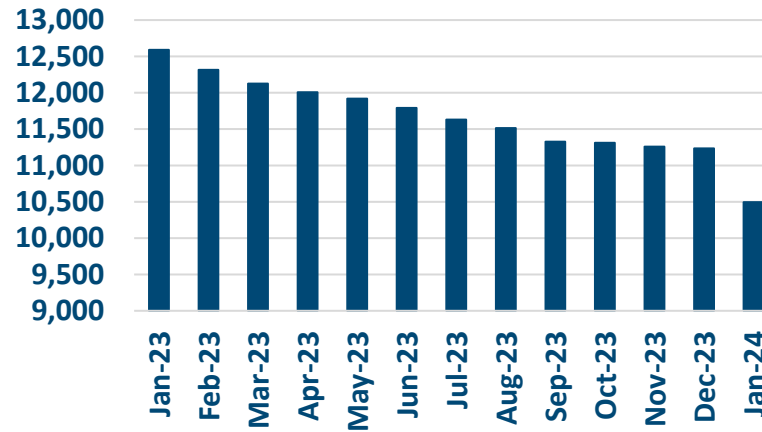


Enrollment Breakdown by Source

OPT-IN VS. PASSIVE ENROLLMENTS



TOTAL ENROLLMENT BY MONTH



January Active Enrollments
10,496

December Active Enrollments
11,235

Monthly Enrollment Change
-7%

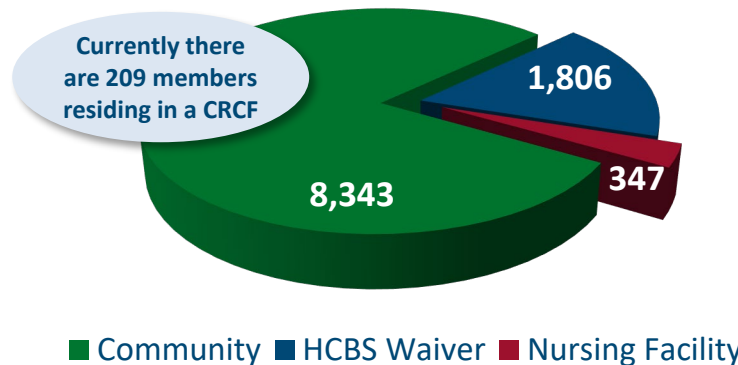
Nursing Facility Usage and Enrollee Demographics

NURSING FACILITY UTILIZATION

Type of Stay	Total
Custodial	347
Non-Custodial*	244
Total	591

* Portions of this chart are self-reported MMP data.

ENROLLEE POPULATION BREAKDOWN



Dec 2023 Stakeholder Update

Healthy Connections Prime has released its [December 2023 Stakeholder Update!](#)

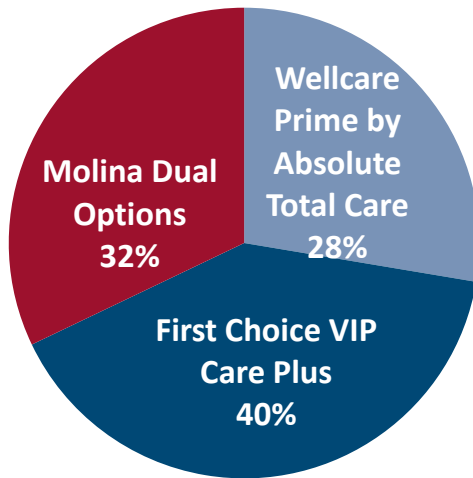
Some of the topics covered are reminders about annual reviews as well as how members can submit an address change or other contact information.

All Stakeholder Updates can be found [here](#).

January 2024 Active Enrollments

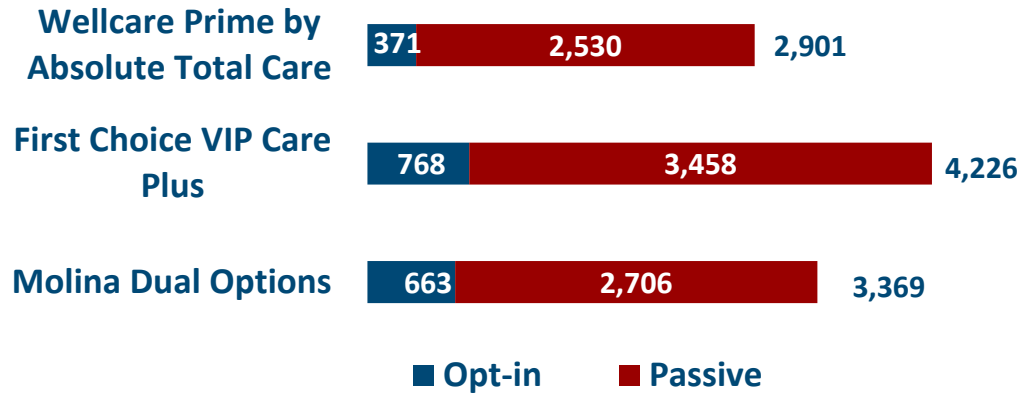


Enrollment by Plan

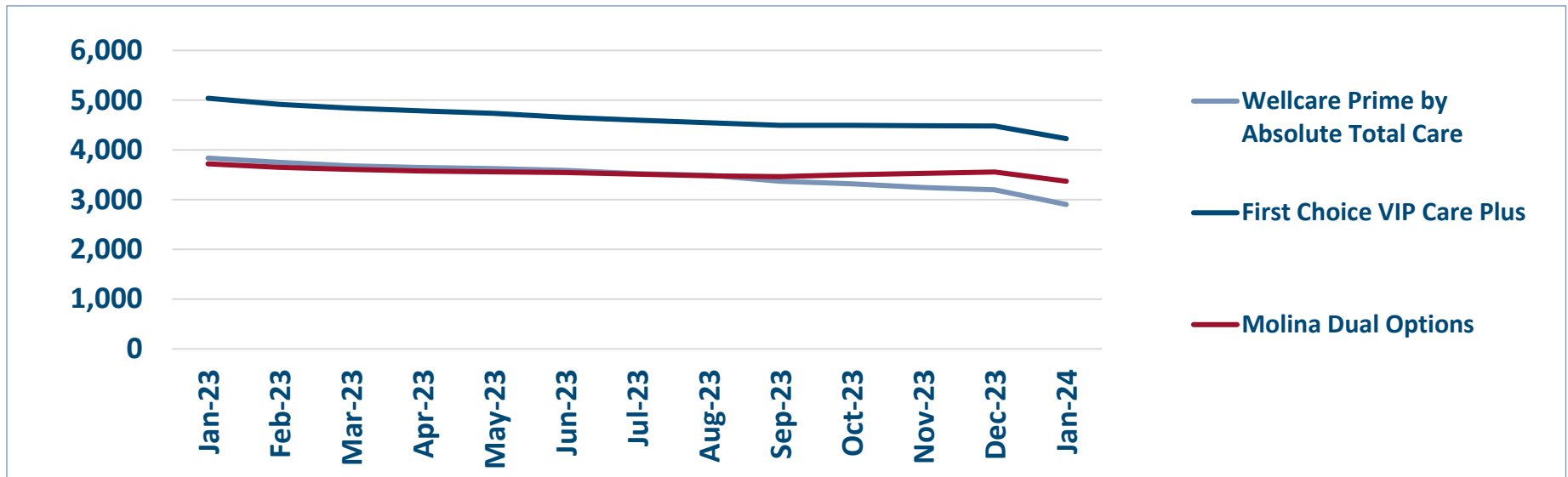


ENROLLMENT SOURCE BY PLAN

Total: 10,496



Monthly Enrollment By Plan

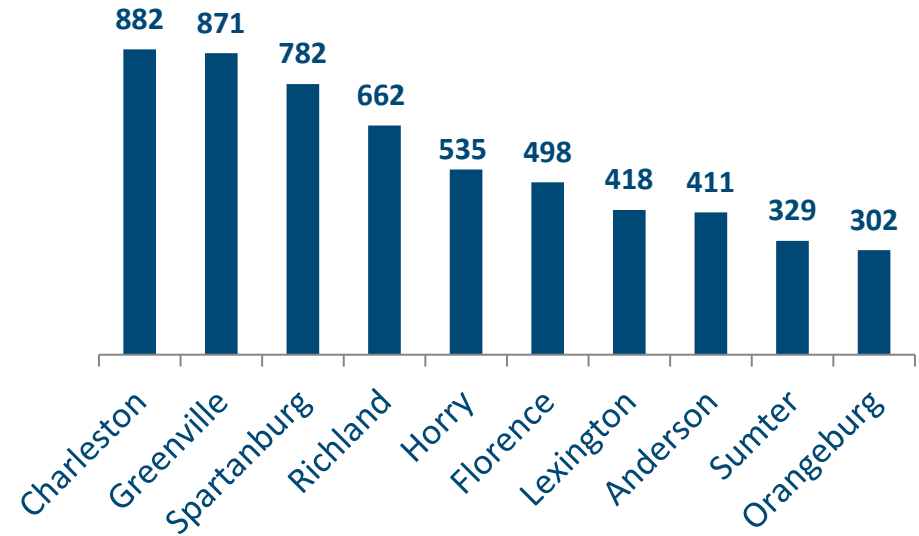


Healthy Connections Prime Active Enrollment

Jan 2024

County	Wellcare Prime by Absolute Total Care	First Choice VIP Care Plus	Molina Dual Options	County Total
Abbeville	12	31	17	60
Aiken	12	122	63	197
Allendale	5	13	14	32
Anderson	62	274	75	411
Bamberg	15	24	22	61
Barnwell	22	23	33	78
Beaufort	77	120	17	214
Berkeley	111	129	48	288
Calhoun	7	11	22	40
Charleston	269	315	298	882
Cherokee	11	158	30	199
Chester	27	26	33	86
Chesterfield	50	43	51	144
Clarendon	21	52	31	104
Colleton	42	41	67	150
Darlington	158	0	44	202
Dillon	52	46	66	164
Dorchester	21	113	33	167
Edgefield	15	23	26	64
Fairfield	23	33	27	83
Florence	139	188	171	498
Georgetown	64	93	40	197
Greenville	229	297	345	871
Greenwood	24	108	29	161
Hampton	19	28	24	71
Horry	392	0	143	535
Jasper	16	30	16	62
Kershaw	29	82	66	177
Lancaster	38	0	87	125
Laurens	43	71	50	164
Lee	21	31	36	88
Lexington	83	133	202	418
Marion	44	47	60	151
Marlboro	27	39	47	113
McCormick	6	12	15	33
Newberry	20	43	47	110
Oconee	7	133	61	201
Orangeburg	97	146	59	302
Pickens	63	107	78	248
Richland	184	231	247	662
Saluda	5	20	21	46
Spartanburg	152	402	228	782
Sumter	17	289	23	329
Union	13	51	25	89
Williamsburg	36	48	58	142
York	121	0	174	295
Total	2,901	4,226	3,369	10,496

TOP 10 COUNTIES BY ENROLLMENT



HEALTHY CONNECTIONS PRIME COUNTY PARTICIPATION

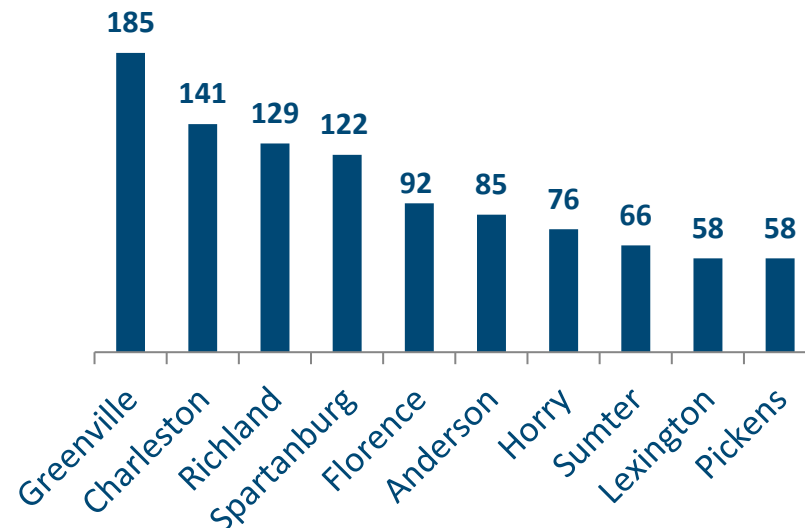
Healthy Connections Prime is available in every county in the state.



(All counties are available for passive enrollment.)

Healthy Connections Prime HCBS Waiver Enrollment				Jan 2024
County	Wellcare Prime by Absolute Total Care	First Choice VIP Care Plus	Molina Dual Options	County Total
Abbeville	2	8	7	17
Aiken	1	8	5	14
Allendale	2	5	4	11
Anderson	11	62	12	85
Bamberg	5	8	2	15
Barnwell	4	3	11	18
Beaufort	19	27	2	48
Berkeley	15	18	5	38
Calhoun	0	2	4	6
Charleston	35	57	49	141
Cherokee	0	24	4	28
Chester	3	3	5	11
Chesterfield	5	4	6	15
Clarendon	6	12	6	24
Colleton	8	7	10	25
Darlington	24	0	3	27
Dillon	8	12	7	27
Dorchester	6	17	0	23
Edgefield	3	3	4	10
Fairfield	6	3	5	14
Florence	22	39	31	92
Georgetown	10	15	6	31
Greenville	53	61	71	185
Greenwood	5	17	6	28
Hampton	6	7	8	21
Horry	58	0	18	76
Jasper	2	7	0	9
Kershaw	3	10	9	22
Lancaster	5	0	9	14
Laurens	10	10	3	23
Lee	5	9	5	19
Lexington	9	24	25	58
Marion	9	14	15	38
Marlboro	3	7	9	19
McCormick	3	1	4	8
Newberry	4	8	8	20
Oconee	0	28	6	34
Orangeburg	18	26	6	50
Pickens	16	25	17	58
Richland	31	54	44	129
Saluda	1	0	4	5
Spartanburg	25	76	21	122
Sumter	2	62	2	66
Union	0	7	2	9
Williamsburg	10	15	18	43
York	13	0	17	30
Total	486	805	515	1,806

CURRENT TOP 10 COUNTIES BY WAIVER ENROLLMENT



HCBS WAIVER UTILIZATION

Waiver Service	Total
Community Choices	1,774
HIV/AIDS	30
Mechanical Ventilator Dependent	2
Total	1,806

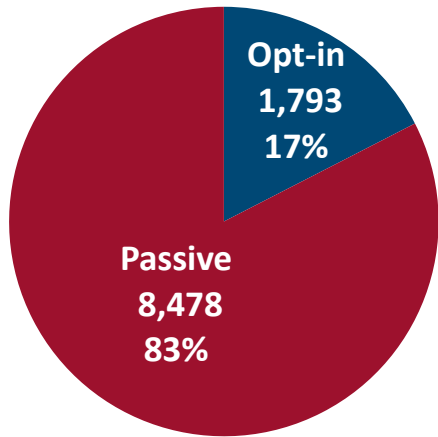
February 2024

February 2024 Active Enrollments

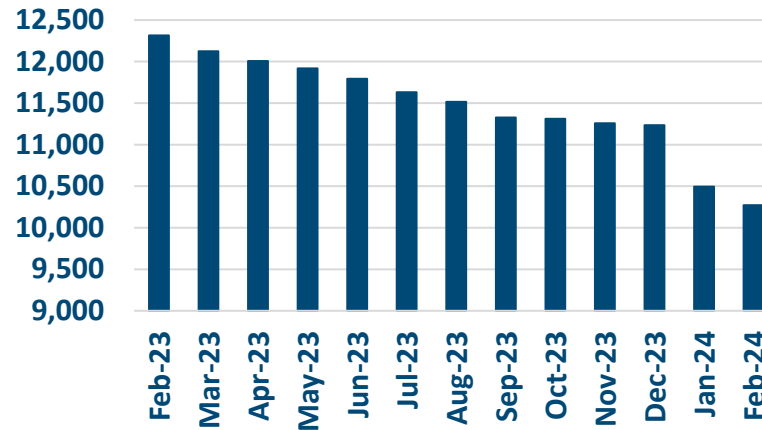


Enrollment Breakdown by Source

OPT-IN VS. PASSIVE ENROLLMENTS



TOTAL ENROLLMENT BY MONTH



February Active Enrollments
10,271

January Active Enrollments
10,496

Monthly Enrollment Change
-2%

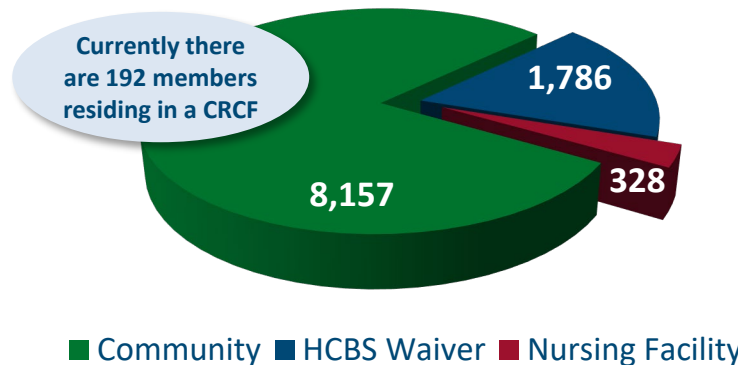
Nursing Facility Usage and Enrollee Demographics

NURSING FACILITY UTILIZATION

Type of Stay	Total
Custodial	328
Non-Custodial*	256
Total	584

* Portions of this chart are self-reported MMP data.

ENROLLEE POPULATION BREAKDOWN



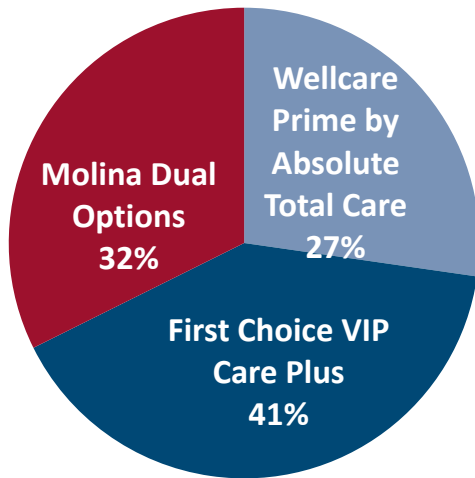
Links to MMPs



February 2024 Active Enrollments

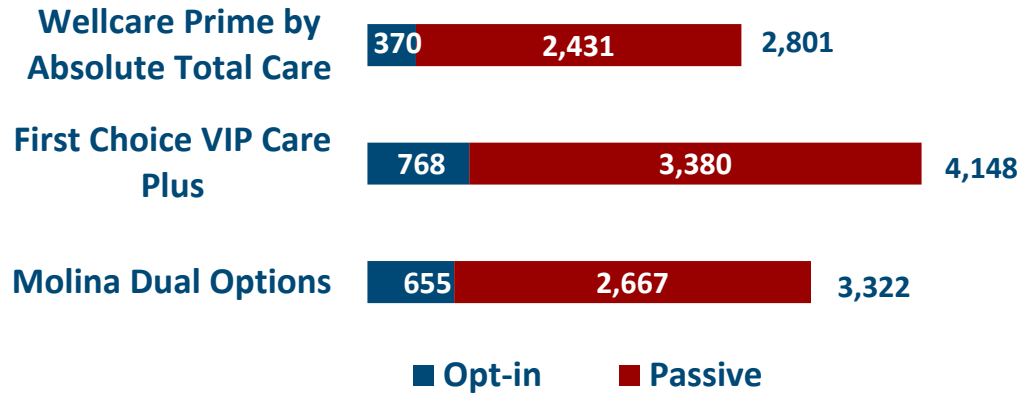


Enrollment by Plan

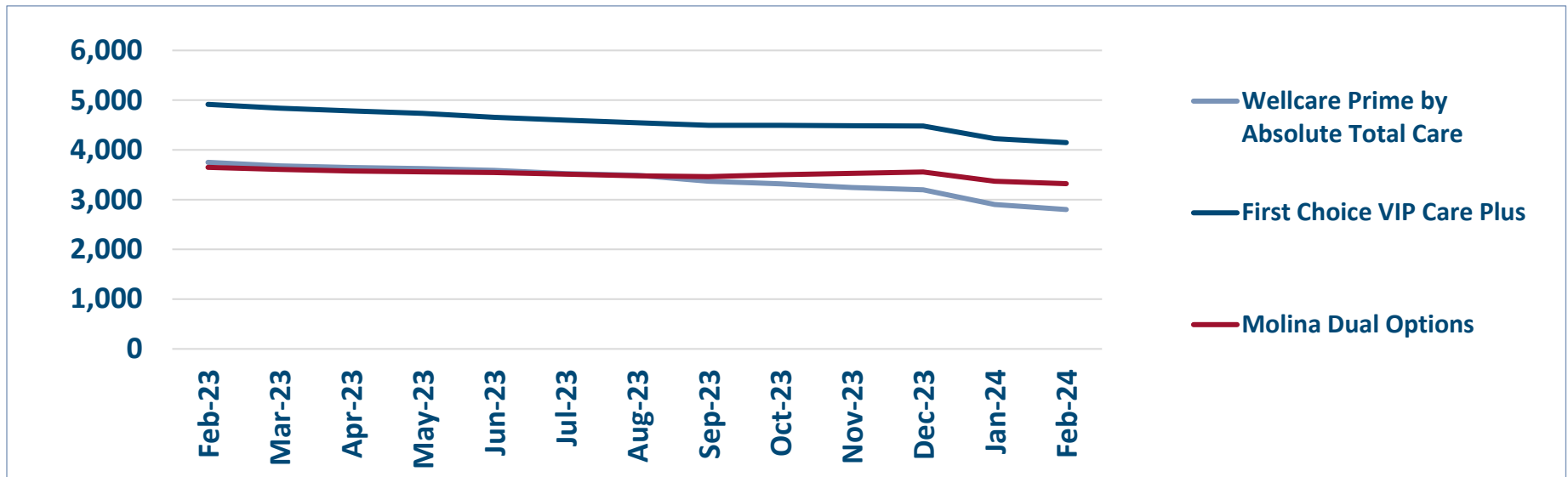


ENROLLMENT SOURCE BY PLAN

Total: 10,271

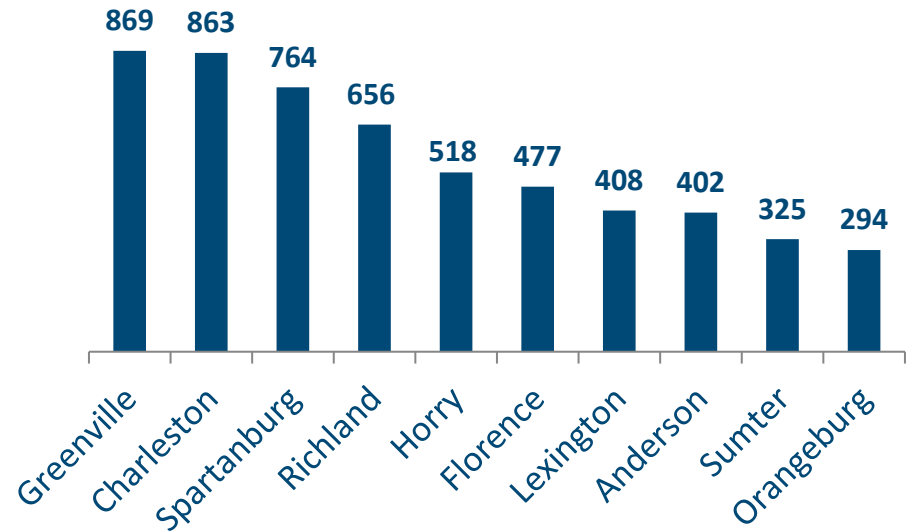


Monthly Enrollment By Plan



Healthy Connections Prime Active Enrollment				Feb 2024
County	Wellcare Prime by Absolute Total Care	First Choice VIP Care Plus	Molina Dual Options	County Total
Abbeville	12	31	17	60
Aiken	11	120	65	196
Allendale	5	13	14	32
Anderson	61	269	72	402
Bamberg	14	25	20	59
Barnwell	19	21	33	73
Beaufort	76	117	15	208
Berkeley	107	126	51	284
Calhoun	7	11	22	40
Charleston	254	316	293	863
Cherokee	11	151	31	193
Chester	25	26	32	83
Chesterfield	46	42	47	135
Clarendon	21	51	29	101
Colleton	41	38	65	144
Darlington	154	0	44	198
Dillon	52	45	64	161
Dorchester	22	113	33	168
Edgefield	15	22	24	61
Fairfield	23	33	25	81
Florence	129	176	172	477
Georgetown	66	90	35	191
Greenville	227	296	346	869
Greenwood	24	106	29	159
Hampton	18	28	24	70
Horry	380	0	138	518
Jasper	15	30	16	61
Kershaw	28	82	64	174
Lancaster	35	0	88	123
Laurens	40	68	50	158
Lee	20	32	34	86
Lexington	80	128	200	408
Marion	46	47	58	151
Marlboro	26	37	44	107
McCormick	6	12	13	31
Newberry	21	40	43	104
Oconee	7	129	63	199
Orangeburg	93	143	58	294
Pickens	61	104	78	243
Richland	174	230	252	656
Saluda	5	19	21	45
Spartanburg	144	398	222	764
Sumter	17	285	23	325
Union	12	52	24	88
Williamsburg	35	46	58	139
York	116	0	173	289
Total	2,801	4,148	3,322	10,271

TOP 10 COUNTIES BY ENROLLMENT



HEALTHY CONNECTIONS PRIME COUNTY PARTICIPATION

Healthy Connections Prime is available in every county in the state.



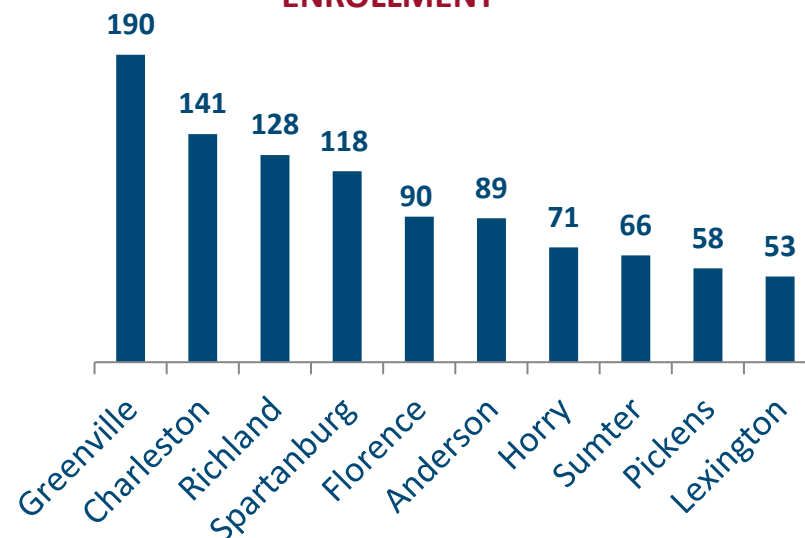
(All counties are available for passive enrollment.)

Healthy Connections Prime HCBS Waiver Enrollment

Feb 2024

County	Wellcare Prime by Absolute Total Care	First Choice VIP Care Plus	Molina Dual Options	County Total
Abbeville	2	8	7	17
Aiken	1	8	6	15
Allendale	2	5	4	11
Anderson	11	66	12	89
Bamberg	5	8	2	15
Barnwell	3	3	11	17
Beaufort	19	26	2	47
Berkeley	14	17	5	36
Calhoun	0	2	4	6
Charleston	33	60	48	141
Cherokee	0	23	4	27
Chester	3	3	4	10
Chesterfield	4	4	5	13
Clarendon	7	12	6	25
Colleton	8	7	9	24
Darlington	23	0	4	27
Dillon	7	12	6	25
Dorchester	5	15	2	22
Edgefield	3	4	4	11
Fairfield	7	3	4	14
Florence	23	35	32	90
Georgetown	10	13	3	26
Greenville	52	64	74	190
Greenwood	5	15	6	26
Hampton	6	7	8	21
Horry	56	0	15	71
Jasper	3	7	1	11
Kershaw	3	12	9	24
Lancaster	4	0	10	14
Laurens	9	10	4	23
Lee	5	9	5	19
Lexington	8	22	23	53
Marion	11	15	14	40
Marlboro	3	7	9	19
McCormick	3	1	4	8
Newberry	3	7	7	17
Oconee	0	27	7	34
Orangeburg	16	26	6	48
Pickens	15	24	19	58
Richland	30	56	42	128
Saluda	1	0	4	5
Spartanburg	22	76	20	118
Sumter	2	62	2	66
Union	1	7	4	12
Williamsburg	10	13	18	41
York	12	0	20	32
Total	470	801	515	1,786

CURRENT TOP 10 COUNTIES BY WAIVER ENROLLMENT



HCBS WAIVER UTILIZATION

Waiver Service	Total
Community Choices	1,759
HIV/AIDS	25
Mechanical Ventilator Dependent	2
Total	1,786

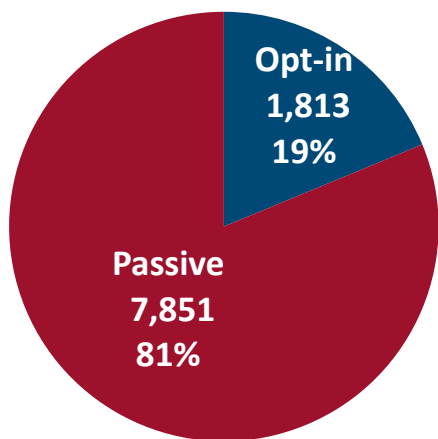
March 2024

March 2024 Active Enrollments

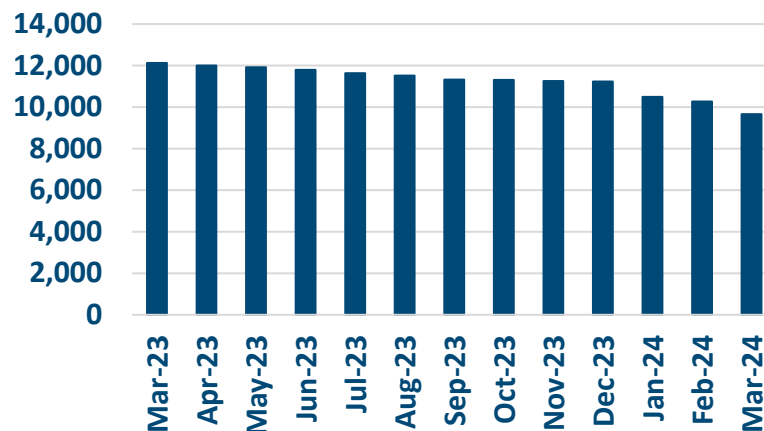


Enrollment Breakdown by Source

OPT-IN VS. PASSIVE ENROLLMENTS



TOTAL ENROLLMENT BY MONTH



March Active Enrollments
9,664

February Active Enrollments
10,271

Monthly Enrollment Change
-6%

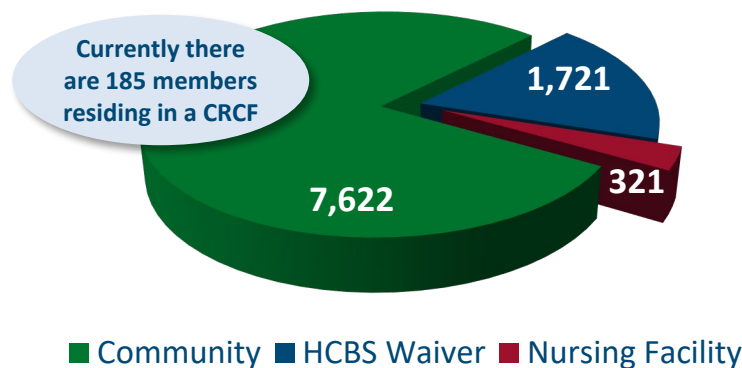
Nursing Facility Usage and Enrollee Demographics

NURSING FACILITY UTILIZATION

Type of Stay	Total
Custodial	321
Non-Custodial*	247
Total	568

* Portions of this chart are self-reported MMP data.

ENROLLEE POPULATION BREAKDOWN



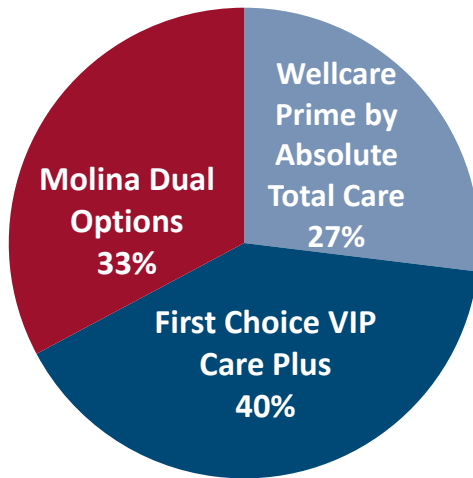
Links to MMPs



March 2024 Active Enrollments

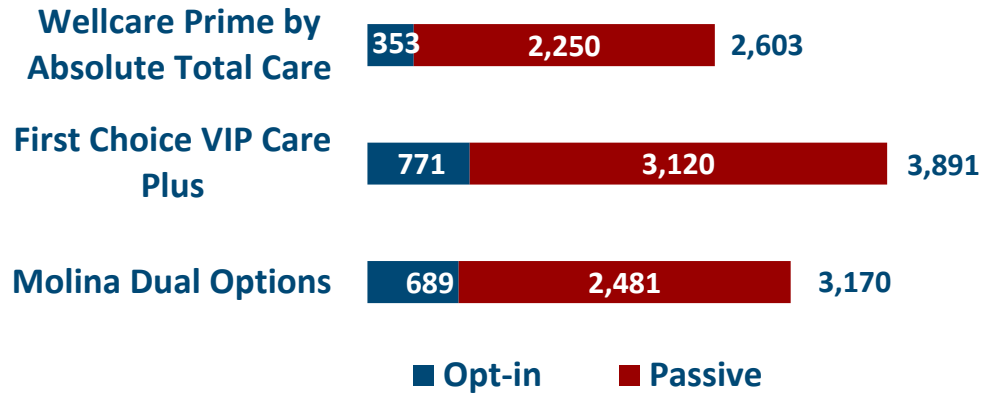


Enrollment by Plan

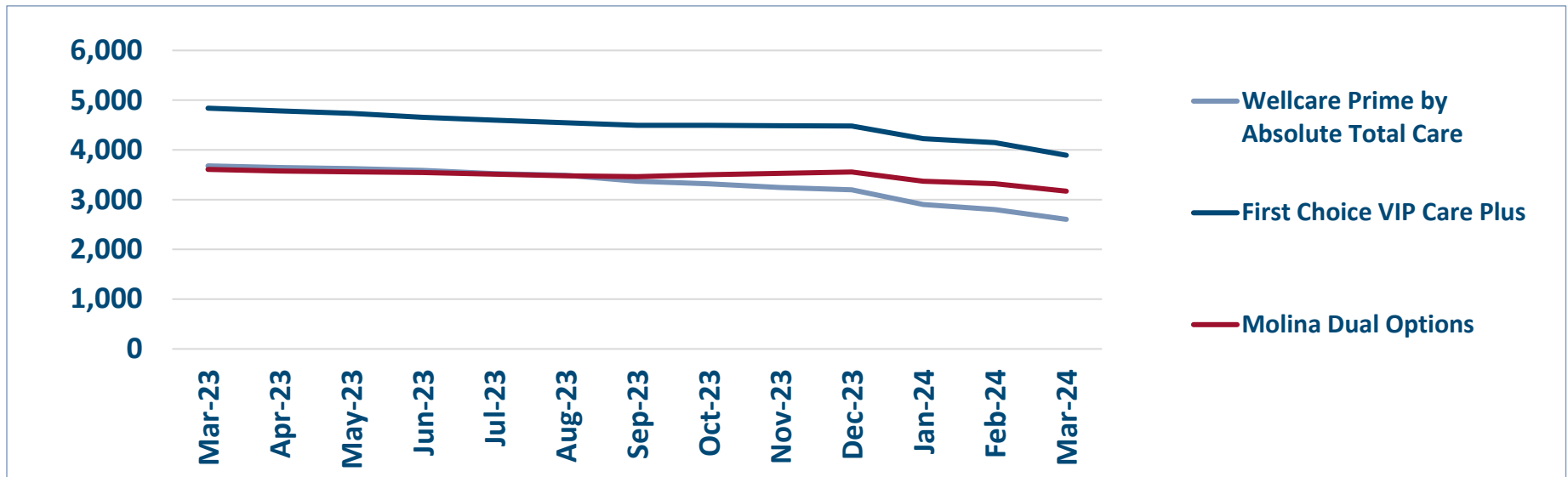


ENROLLMENT SOURCE BY PLAN

Total: 9,664



Monthly Enrollment By Plan

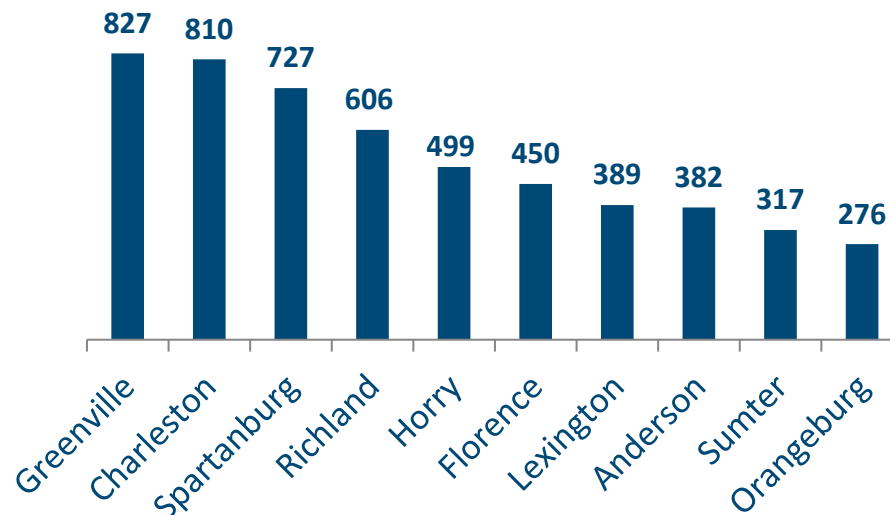


Healthy Connections Prime Active Enrollment

Mar 2024

County	Wellcare Prime by Absolute Total Care	First Choice VIP Care Plus	Molina Dual Options	County Total
Abbeville	10	29	17	56
Aiken	12	114	65	191
Allendale	5	12	14	31
Anderson	60	250	72	382
Bamberg	14	23	19	56
Barnwell	18	21	31	70
Beaufort	65	115	13	193
Berkeley	102	121	49	272
Calhoun	7	10	18	35
Charleston	239	293	278	810
Cherokee	11	139	30	180
Chester	20	26	28	74
Chesterfield	44	40	42	126
Clarendon	21	49	30	100
Colleton	37	34	56	127
Darlington	142	0	42	184
Dillon	47	39	56	142
Dorchester	20	106	34	160
Edgefield	15	19	24	58
Fairfield	21	31	22	74
Florence	120	165	165	450
Georgetown	59	86	35	180
Greenville	211	275	341	827
Greenwood	25	93	30	148
Hampton	17	28	24	69
Horry	357	0	142	499
Jasper	15	30	16	61
Kershaw	24	75	62	161
Lancaster	32	0	87	119
Laurens	37	60	47	144
Lee	16	31	30	77
Lexington	76	120	193	389
Marion	41	45	53	139
Marlboro	22	37	37	96
McCormick	6	9	13	28
Newberry	20	39	40	99
Oconee	7	127	59	193
Orangeburg	86	135	55	276
Pickens	55	98	73	226
Richland	160	215	231	606
Saluda	5	16	19	40
Spartanburg	136	378	213	727
Sumter	18	273	26	317
Union	11	44	22	77
Williamsburg	34	41	53	128
York	103	0	164	267
Total	2,603	3,891	3,170	9,664

TOP 10 COUNTIES BY ENROLLMENT



HEALTHY CONNECTIONS PRIME COUNTY PARTICIPATION

Healthy Connections Prime is available in every county in the state.



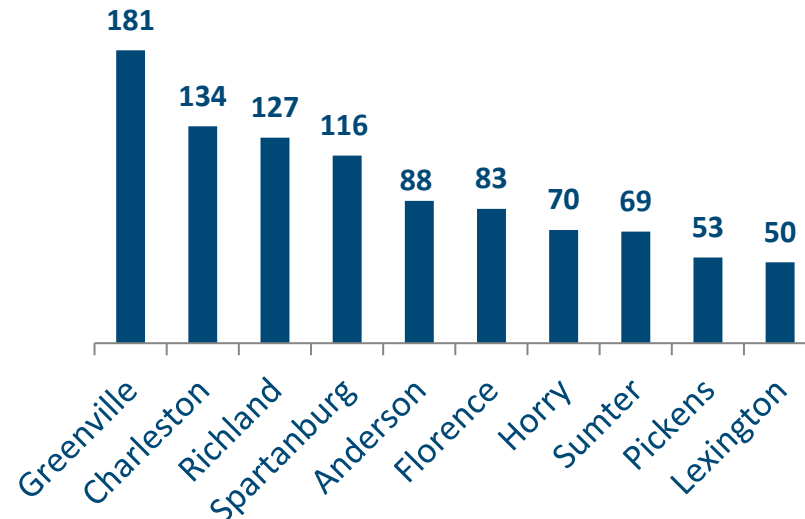
(All counties are available for passive enrollment.)

Healthy Connections Prime HCBS Waiver Enrollment

Mar 2024

County	Wellcare Prime by Absolute Total Care	First Choice VIP Care Plus	Molina Dual Options	County Total
Abbeville	2	9	7	18
Aiken	0	8	5	13
Allendale	2	5	4	11
Anderson	11	66	11	88
Bamberg	5	8	2	15
Barnwell	3	3	11	17
Beaufort	18	24	2	44
Berkeley	14	16	5	35
Calhoun	0	2	4	6
Charleston	29	58	47	134
Cherokee	0	22	3	25
Chester	3	3	4	10
Chesterfield	4	4	4	12
Clarendon	7	11	6	24
Colleton	8	6	9	23
Darlington	23	0	4	27
Dillon	7	10	6	23
Dorchester	5	14	2	21
Edgefield	3	4	4	11
Fairfield	7	3	4	14
Florence	22	33	28	83
Georgetown	10	12	2	24
Greenville	50	56	75	181
Greenwood	5	14	6	25
Hampton	6	6	7	19
Horry	55	0	15	70
Jasper	3	7	1	11
Kershaw	3	11	9	23
Lancaster	4	0	10	14
Laurens	9	10	5	24
Lee	4	8	5	17
Lexington	7	21	22	50
Marion	9	15	14	38
Marlboro	2	7	9	18
McCormick	2	0	4	6
Newberry	3	7	8	18
Oconee	0	25	6	31
Orangeburg	16	25	5	46
Pickens	13	23	17	53
Richland	27	56	44	127
Saluda	1	0	4	5
Spartanburg	22	76	18	116
Sumter	2	63	4	69
Union	1	7	3	11
Williamsburg	9	13	18	40
York	12	0	19	31
Total	448	771	502	1,721

CURRENT TOP 10 COUNTIES BY WAIVER ENROLLMENT



HCBS WAIVER UTILIZATION

Waiver Service	Total
Community Choices	1,698
HIV/AIDS	22
Mechanical Ventilator Dependent	1
Total	1,721

Sources: SCDHHS Medicaid Management Information System, CMS Monthly Full Enrollment Data File (Updated March 2024)

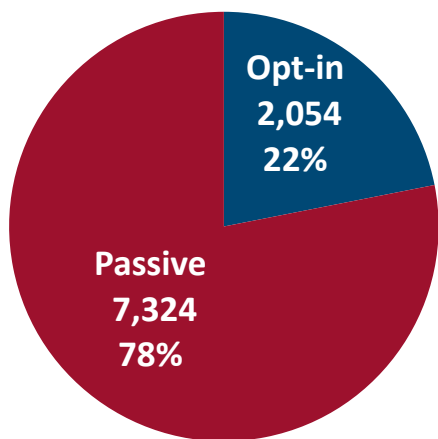
April 2024

April 2024 Active Enrollments

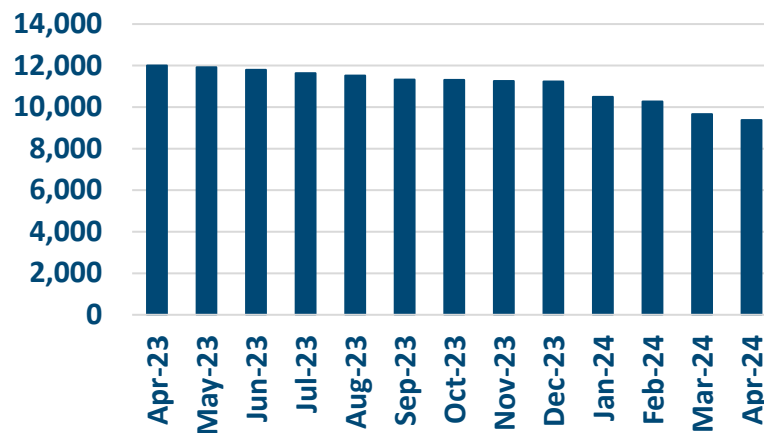


Enrollment Breakdown by Source

OPT-IN VS. PASSIVE ENROLLMENTS



TOTAL ENROLLMENT BY MONTH



April Active Enrollments
9,378

March Active Enrollments
9,664

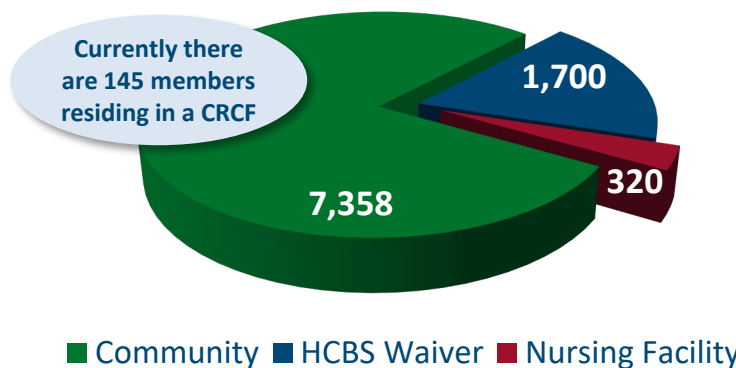
Monthly Enrollment Change
-3%

Nursing Facility Usage and Enrollee Demographics

NURSING FACILITY UTILIZATION

Type of Stay	Total
Custodial	320
Non-Custodial*	217
Total	537

ENROLLEE POPULATION BREAKDOWN



* Portions of this chart are self-reported MMP data.

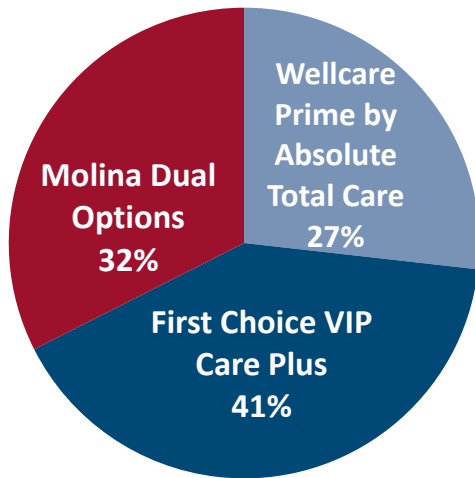
Links to MMPs



April 2024 Active Enrollments

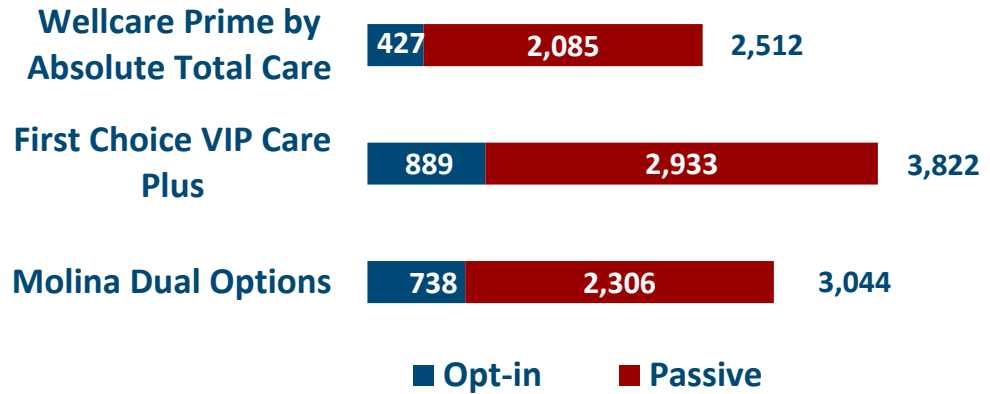


Enrollment by Plan

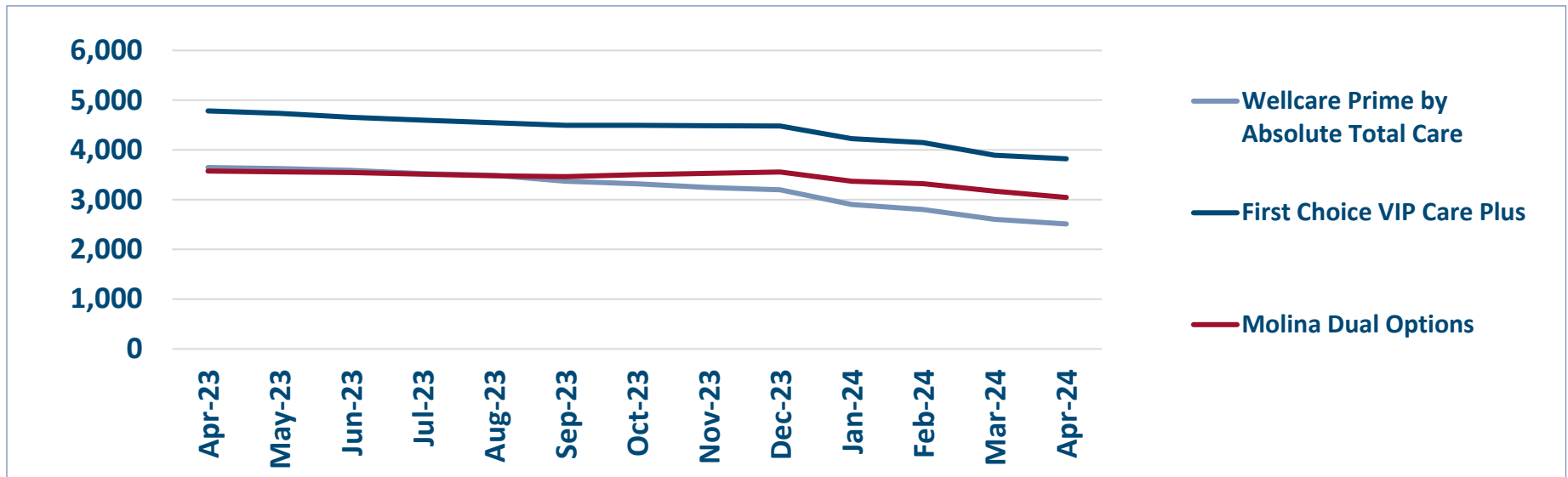


ENROLLMENT SOURCE BY PLAN

Total: 9,378



Monthly Enrollment By Plan

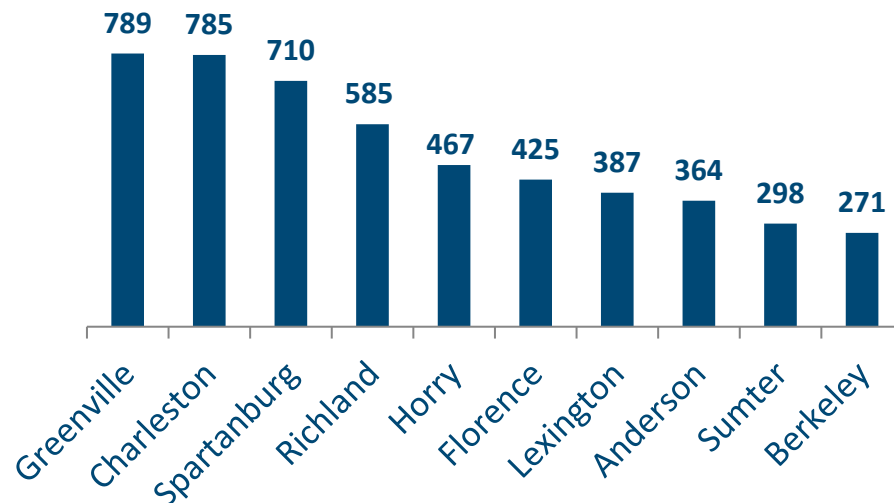


Healthy Connections Prime Active Enrollment

Apr 2024

County	Wellcare Prime by Absolute Total Care	First Choice VIP Care Plus	Molina Dual Options	County Total
Abbeville	10	28	18	56
Aiken	12	108	64	184
Allendale	3	12	14	29
Anderson	52	246	66	364
Bamberg	9	23	20	52
Barnwell	17	21	30	68
Beaufort	68	107	13	188
Berkeley	98	121	52	271
Calhoun	6	10	18	34
Charleston	225	289	271	785
Cherokee	10	135	32	177
Chester	20	24	30	74
Chesterfield	44	39	42	125
Clarendon	21	49	31	101
Colleton	35	36	56	127
Darlington	140	0	38	178
Dillon	44	37	55	136
Dorchester	20	105	32	157
Edgefield	14	17	21	52
Fairfield	21	29	25	75
Florence	116	164	145	425
Georgetown	59	88	37	184
Greenville	204	268	317	789
Greenwood	24	99	28	151
Hampton	17	27	21	65
Horry	335	0	132	467
Jasper	12	30	18	60
Kershaw	26	75	61	162
Lancaster	33	0	80	113
Laurens	34	62	43	139
Lee	19	29	32	80
Lexington	76	127	184	387
Marion	40	45	53	138
Marlboro	23	36	35	94
McCormick	5	7	12	24
Newberry	18	37	39	94
Oconee	6	118	51	175
Orangeburg	84	131	53	268
Pickens	57	92	72	221
Richland	151	210	224	585
Saluda	5	16	18	39
Spartanburg	136	374	200	710
Sumter	18	257	23	298
Union	12	51	22	85
Williamsburg	34	43	55	132
York	99	0	161	260
Total	2,512	3,822	3,044	9,378

TOP 10 COUNTIES BY ENROLLMENT



HEALTHY CONNECTIONS PRIME COUNTY PARTICIPATION

Healthy Connections Prime is available in every county in the state.



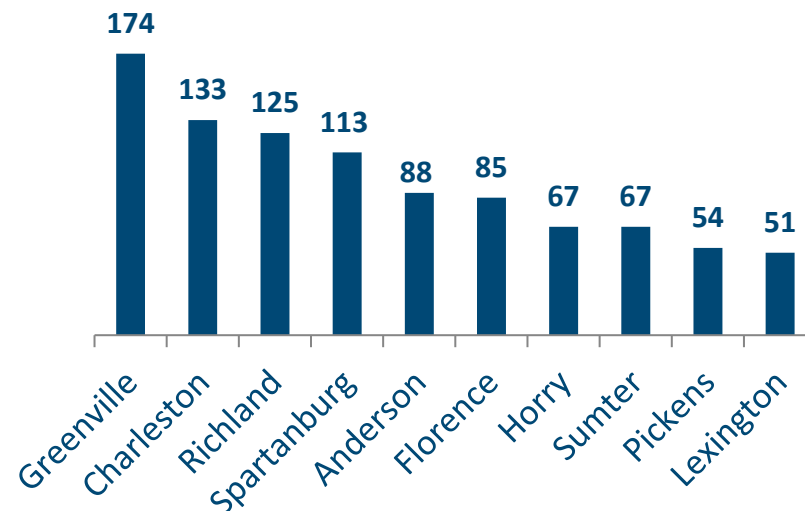
(All counties are available for passive enrollment.)

Apr 2024

Healthy Connections Prime HCBS Waiver Enrollment

County	Wellcare Prime by Absolute Total Care	First Choice VIP Care Plus	Molina Dual Options	County Total
Abbeville	2	9	7	18
Aiken	1	8	5	14
Allendale	2	5	4	11
Anderson	12	65	11	88
Bamberg	3	8	2	13
Barnwell	3	3	11	17
Beaufort	18	23	2	43
Berkeley	14	16	5	35
Calhoun	0	2	4	6
Charleston	28	61	44	133
Cherokee	0	23	4	27
Chester	3	3	4	10
Chesterfield	5	4	3	12
Clarendon	7	11	6	24
Colleton	7	8	9	24
Darlington	25	0	4	29
Dillon	7	10	6	23
Dorchester	5	14	1	20
Edgefield	3	4	4	11
Fairfield	6	3	4	13
Florence	23	34	28	85
Georgetown	10	13	3	26
Greenville	48	55	71	174
Greenwood	5	14	6	25
Hampton	5	6	7	18
Horry	52	0	15	67
Jasper	3	7	2	12
Kershaw	3	11	8	22
Lancaster	4	0	8	12
Laurens	9	9	3	21
Lee	5	9	4	18
Lexington	8	21	22	51
Marion	8	14	14	36
Marlboro	3	6	8	17
McCormick	2	0	4	6
Newberry	3	7	7	17
Oconee	0	24	7	31
Orangeburg	15	23	4	42
Pickens	13	24	17	54
Richland	27	54	44	125
Saluda	1	0	4	5
Spartanburg	22	72	19	113
Sumter	2	62	3	67
Union	1	7	3	11
Williamsburg	10	13	18	41
York	12	0	21	33
Total	445	765	490	1,700

CURRENT TOP 10 COUNTIES BY WAIVER ENROLLMENT



HCBS WAIVER UTILIZATION

Waiver Service	Total
Community Choices	1,678
HIV/AIDS	21
Mechanical Ventilator Dependent	1
Total	1,700

Sources: SCDHHS Medicaid Management Information System, CMS Monthly Full Enrollment Data File (Updated April 2024)