

# Healthy Connections Prime Monthly Enrollment Dashboards

---

January – December 2024

# Table of Contents

<a href="#"><u>Glossary of Key Terms</u></a> .....	3
<a href="#"><u>January 2024</u></a> .....	5
<a href="#"><u>February 2024</u></a> .....	10
<a href="#"><u>March 2024</u></a> .....	15
<a href="#"><u>April 2024</u></a> .....	20
<a href="#"><u>May 2024</u></a> .....	25
<a href="#"><u>June 2024</u></a> .....	30
<a href="#"><u>July 2024</u></a> .....	35
<a href="#"><u>August 2024</u></a> .....	40
<a href="#"><u>September 2024</u></a> .....	45
<a href="#"><u>October 2024</u></a> .....	50
<a href="#"><u>November 2024</u></a> .....	55

# **Glossary of Key Terms**

## Glossary of Key Terms

- **Active Enrollment:** Members with active coverage under Healthy Connections Prime. This does not include individuals who are enrolled but whose coverage has not started yet.
- **Cancellation:** A request by an individual to be removed from the program **before** the coverage effective date. For example: An individual has been passively enrolled into a Medicare-Medicaid Plan but they ask to leave the program before the coverage effective date. This request will delete the enrollment from all enrollment systems. This would be considered a cancellation.
- **Community:** At home or in a community-based setting, such as a Community Residential Care Facility (CRCF). Not in a nursing facility.
- **Community Residential Care Facility (CRCF):** CRCFs offer room and board and, unlike boarding homes, provide a degree of personal care for a period in excess of 24 consecutive hours for 2 or more persons, 18 years old or older.
- **Custodial Stay:** Member's stay in a nursing facility under an approved Medicaid Long Term Care Stay, and not for temporary rehabilitation.
- **Disenrollment:** A request by an individual to be removed from the program **after** the coverage effective date. For example: An individual has opted into a Medicare-Medicaid Plan but they ask to leave the program after the coverage effective date. This request will end the current enrollment coverage at the end of the month it is submitted. This would be considered a disenrollment.
- **Home and Community Based Services (HCBS) Waiver:** HCBS waivers provide services and supports for persons eligible for nursing home care stay longer in the community (home and community-based settings). Examples of such services and supports are: assistance getting dressed, home delivered meals, and wheelchair ramps. HCBS are offered through one of three waivers: Community Choices, HIV/AIDS, and Mechanical Ventilator Dependent. Plans also offer these services to non-waiver participants based on medical need.
- **Non-Custodial Stay:** A member's stay in a nursing facility for temporary rehabilitation and not for long term care.
- **Opt-in Enrollment:** A request by an eligible individual to actively join a Medicare-Medicaid Plan.
- **Opt-out:** A request by an individual to affirmatively decline passive enrollment into the Healthy Connections Prime program. Once an individual has opted out, the State must document this and exclude him/her from future passive enrollment processing. There are three scenarios where opt-out requests can be received:
  - The individual opts-in or is passively enrolled, and then opts out **before** the enrollment effective date. The State must **cancel** the enrollment along with opting the individual out of the program.
  - The individual opts-in or is passively enrolled, and then opts out **on or after** the enrollment effective date. The State must **disenroll** the individual along with opting the individual out of the program.
  - An individual **has not opted-in** to the program and he/she **has not been passively enrolled** but he/she requests to opt-out. The State must opt the individual out of passive enrollment into the program.
- **Passive Enrollment:** An auto assignment into a Medicare-Medicaid Plan for an eligible individual who has not actively chosen to join the program. Please note that if an individual does not take action to end their coverage, their membership in the program will be considered voluntary.
- **Plan:** A Medicare-Medicaid Plan (MMP) that is offering coverage under Healthy Connections Prime.

## For More Information

Please visit our website at <http://www.scdhhs.gov/prime> or call the SC Thrive Customer Service Center at (800) 726-8774, Monday-Friday, 8:30 a.m. – 5 p.m. TTY users call 711. This call is free.

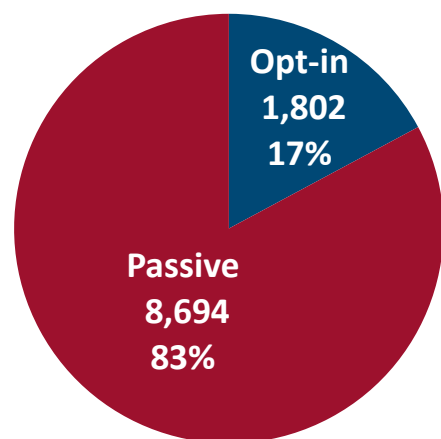
**January 2024**

## January 2024 Active Enrollments

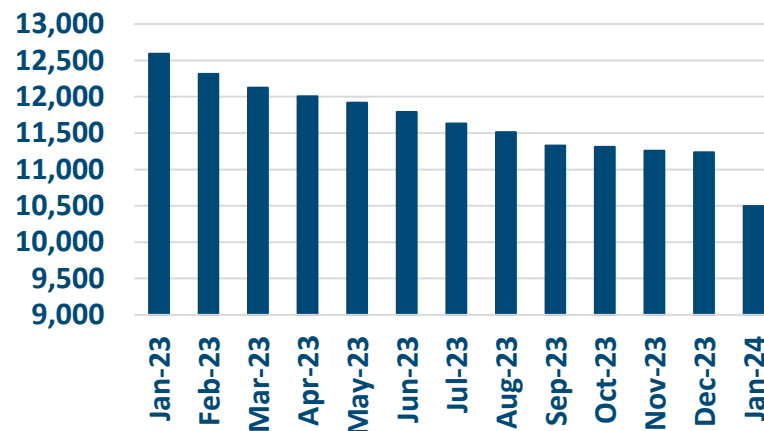


## Enrollment Breakdown by Source

## OPT-IN VS. PASSIVE ENROLLMENTS



## TOTAL ENROLLMENT BY MONTH



January Active  
Enrollments  
10,496

December Active  
Enrollments  
11,235

Monthly  
Enrollment Change  
-7%

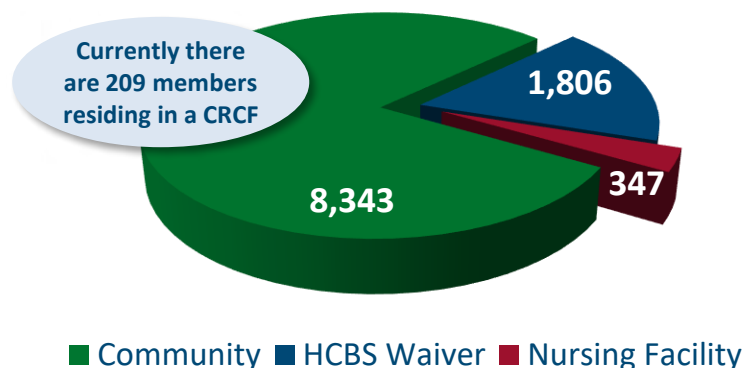
## Nursing Facility Usage and Enrollee Demographics

## NURSING FACILITY UTILIZATION

Type of Stay	Total
Custodial	347
Non-Custodial*	244
<b>Total</b>	<b>591</b>

\* Portions of this chart are self-reported MMP data.

## ENROLLEE POPULATION BREAKDOWN



## Dec 2023 Stakeholder Update

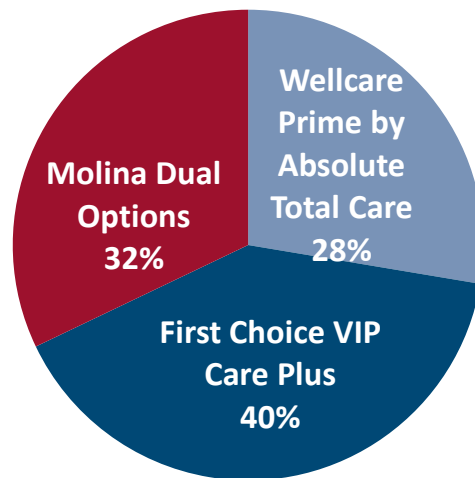
Healthy Connections Prime has released its [December 2023 Stakeholder Update!](#)

Some of the topics covered are reminders about annual reviews as well as how members can submit an address change or other contact information.

All Stakeholder Updates can be found [here](#).

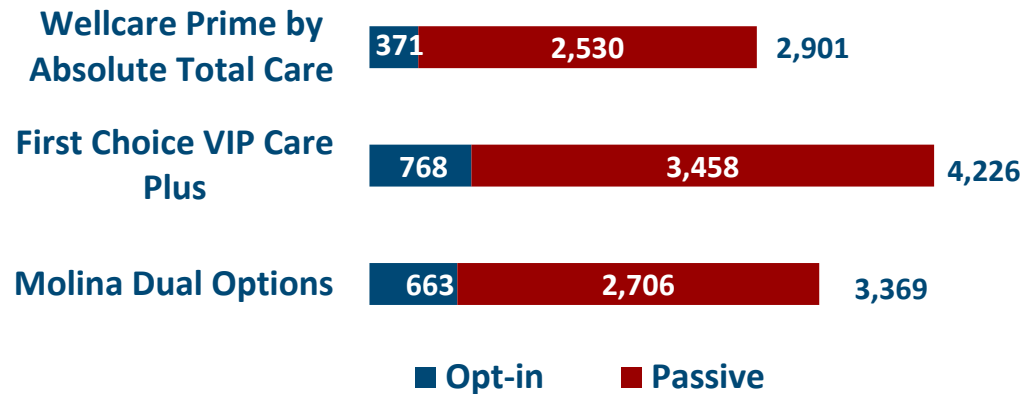
## January 2024 Active Enrollments

## Enrollment by Plan

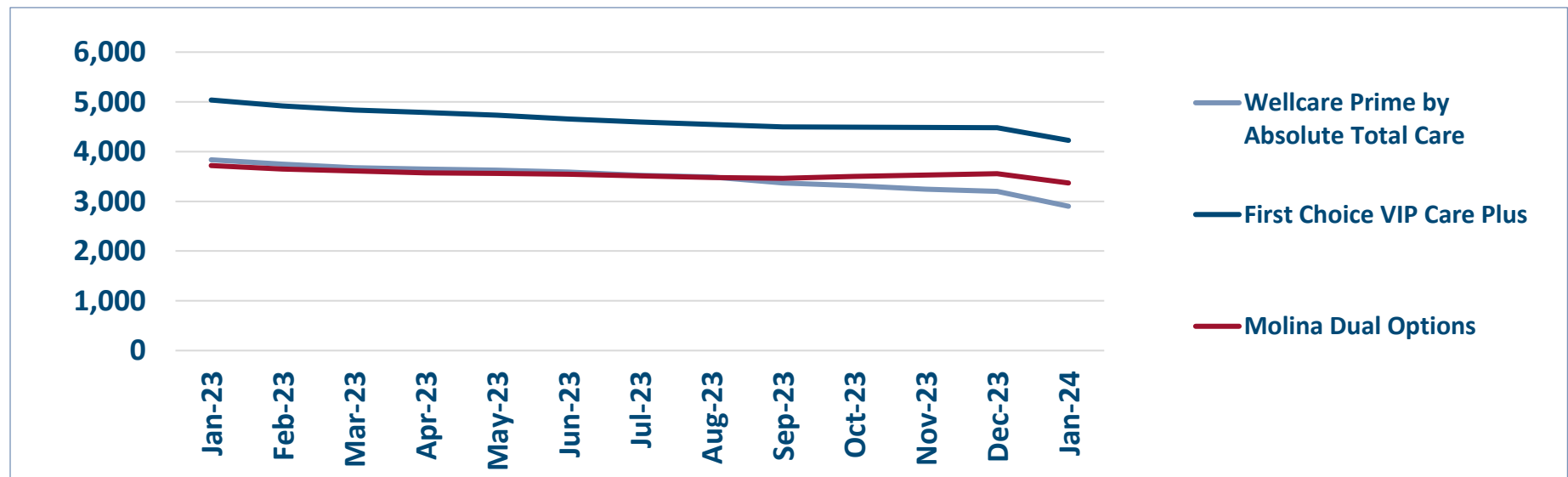


## ENROLLMENT SOURCE BY PLAN

Total: 10,496



## Monthly Enrollment By Plan

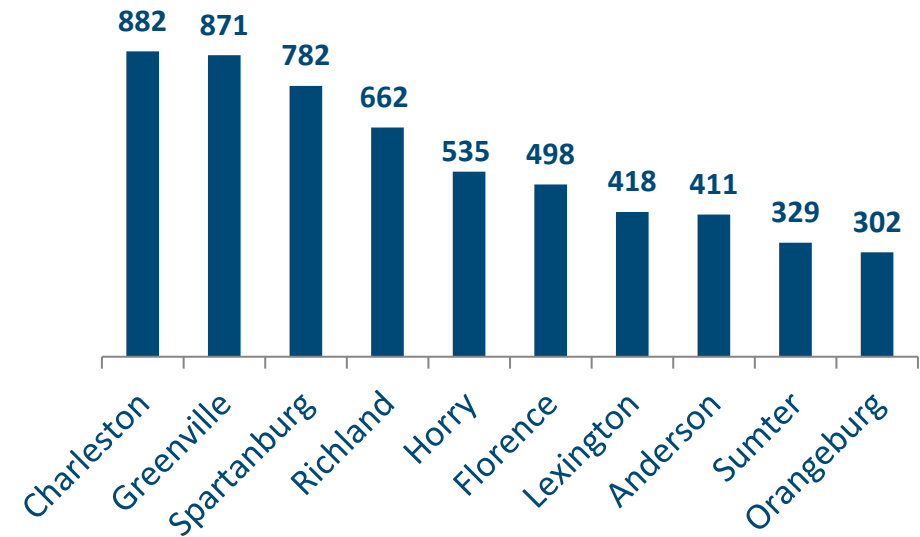


## Healthy Connections Prime Active Enrollment

Jan  
2024

County	Wellcare Prime by Absolute Total Care	First Choice VIP Care Plus	Molina Dual Options	County Total
Abbeville	12	31	17	60
Aiken	12	122	63	197
Allendale	5	13	14	32
Anderson	62	274	75	411
Bamberg	15	24	22	61
Barnwell	22	23	33	78
Beaufort	77	120	17	214
Berkeley	111	129	48	288
Calhoun	7	11	22	40
Charleston	269	315	298	882
Cherokee	11	158	30	199
Chester	27	26	33	86
Chesterfield	50	43	51	144
Clarendon	21	52	31	104
Colleton	42	41	67	150
Darlington	158	0	44	202
Dillon	52	46	66	164
Dorchester	21	113	33	167
Edgefield	15	23	26	64
Fairfield	23	33	27	83
Florence	139	188	171	498
Georgetown	64	93	40	197
Greenville	229	297	345	871
Greenwood	24	108	29	161
Hampton	19	28	24	71
Horry	392	0	143	535
Jasper	16	30	16	62
Kershaw	29	82	66	177
Lancaster	38	0	87	125
Laurens	43	71	50	164
Lee	21	31	36	88
Lexington	83	133	202	418
Marion	44	47	60	151
Marlboro	27	39	47	113
McCormick	6	12	15	33
Newberry	20	43	47	110
Oconee	7	133	61	201
Orangeburg	97	146	59	302
Pickens	63	107	78	248
Richland	184	231	247	662
Saluda	5	20	21	46
Spartanburg	152	402	228	782
Sumter	17	289	23	329
Union	13	51	25	89
Williamsburg	36	48	58	142
York	121	0	174	295
<b>Total</b>	<b>2,901</b>	<b>4,226</b>	<b>3,369</b>	<b>10,496</b>

## TOP 10 COUNTIES BY ENROLLMENT



## HEALTHY CONNECTIONS PRIME COUNTY PARTICIPATION

Healthy Connections Prime is available in every county in the state.



(All counties are available for passive enrollment.)

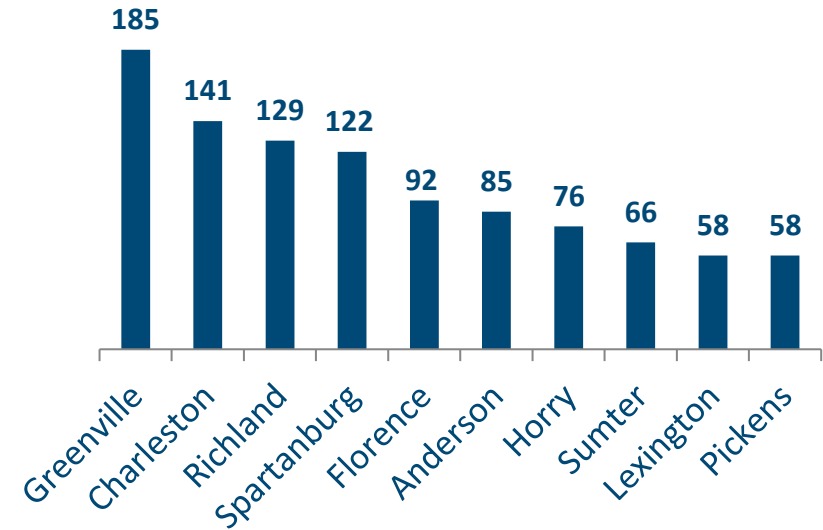


## Healthy Connections Prime HCBS Waiver Enrollment

Jan  
2024

County	Wellcare Prime by Absolute Total Care	First Choice VIP Care Plus	Molina Dual Options	County Total
Abbeville	2	8	7	17
Aiken	1	8	5	14
Allendale	2	5	4	11
Anderson	11	62	12	85
Bamberg	5	8	2	15
Barnwell	4	3	11	18
Beaufort	19	27	2	48
Berkeley	15	18	5	38
Calhoun	0	2	4	6
Charleston	35	57	49	141
Cherokee	0	24	4	28
Chester	3	3	5	11
Chesterfield	5	4	6	15
Clarendon	6	12	6	24
Colleton	8	7	10	25
Darlington	24	0	3	27
Dillon	8	12	7	27
Dorchester	6	17	0	23
Edgefield	3	3	4	10
Fairfield	6	3	5	14
Florence	22	39	31	92
Georgetown	10	15	6	31
Greenville	53	61	71	185
Greenwood	5	17	6	28
Hampton	6	7	8	21
Horry	58	0	18	76
Jasper	2	7	0	9
Kershaw	3	10	9	22
Lancaster	5	0	9	14
Laurens	10	10	3	23
Lee	5	9	5	19
Lexington	9	24	25	58
Marion	9	14	15	38
Marlboro	3	7	9	19
McCormick	3	1	4	8
Newberry	4	8	8	20
Oconee	0	28	6	34
Orangeburg	18	26	6	50
Pickens	16	25	17	58
Richland	31	54	44	129
Saluda	1	0	4	5
Spartanburg	25	76	21	122
Sumter	2	62	2	66
Union	0	7	2	9
Williamsburg	10	15	18	43
York	13	0	17	30
<b>Total</b>	<b>486</b>	<b>805</b>	<b>515</b>	<b>1,806</b>

## CURRENT TOP 10 COUNTIES BY WAIVER ENROLLMENT



## HCBS WAIVER UTILIZATION

Waiver Service	Total
Community Choices	1,774
HIV/AIDS	30
Mechanical Ventilator Dependent	2
<b>Total</b>	<b>1,806</b>

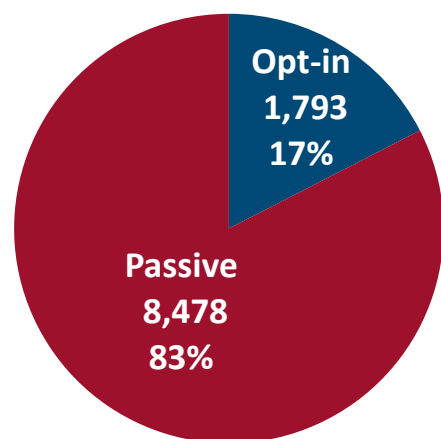
**February 2024**

## February 2024 Active Enrollments

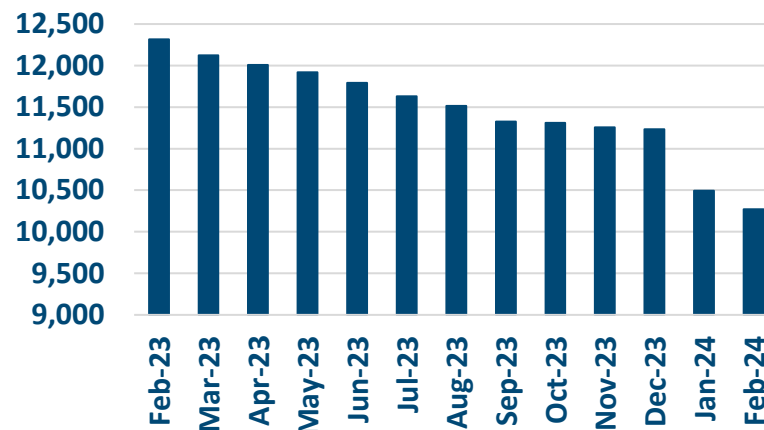


### Enrollment Breakdown by Source

#### OPT-IN VS. PASSIVE ENROLLMENTS



#### TOTAL ENROLLMENT BY MONTH



February Active Enrollments  
10,271

January Active Enrollments  
10,496

Monthly Enrollment Change  
-2%

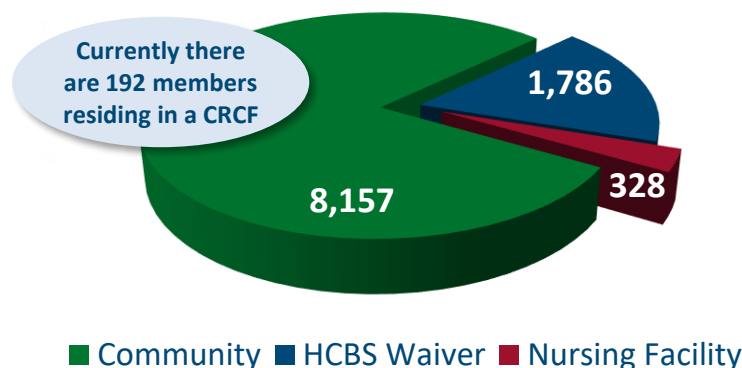
### Nursing Facility Usage and Enrollee Demographics

#### NURSING FACILITY UTILIZATION

Type of Stay	Total
Custodial	328
Non-Custodial*	256
<b>Total</b>	<b>584</b>

\* Portions of this chart are self-reported MMP data.

#### ENROLLEE POPULATION BREAKDOWN



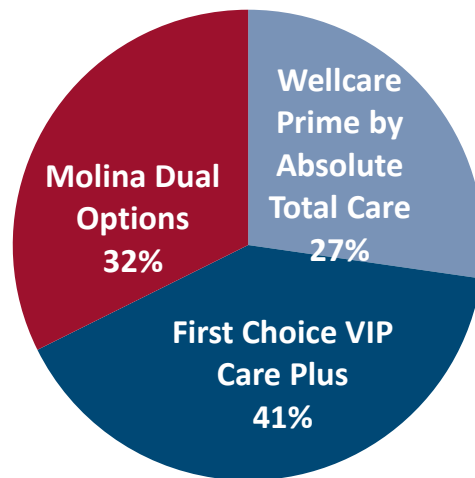
#### Links to MMPs



## February 2024 Active Enrollments

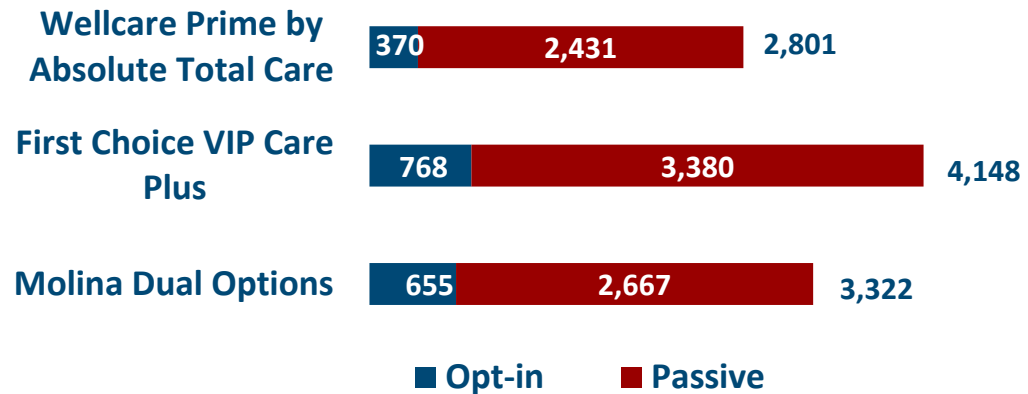


## Enrollment by Plan

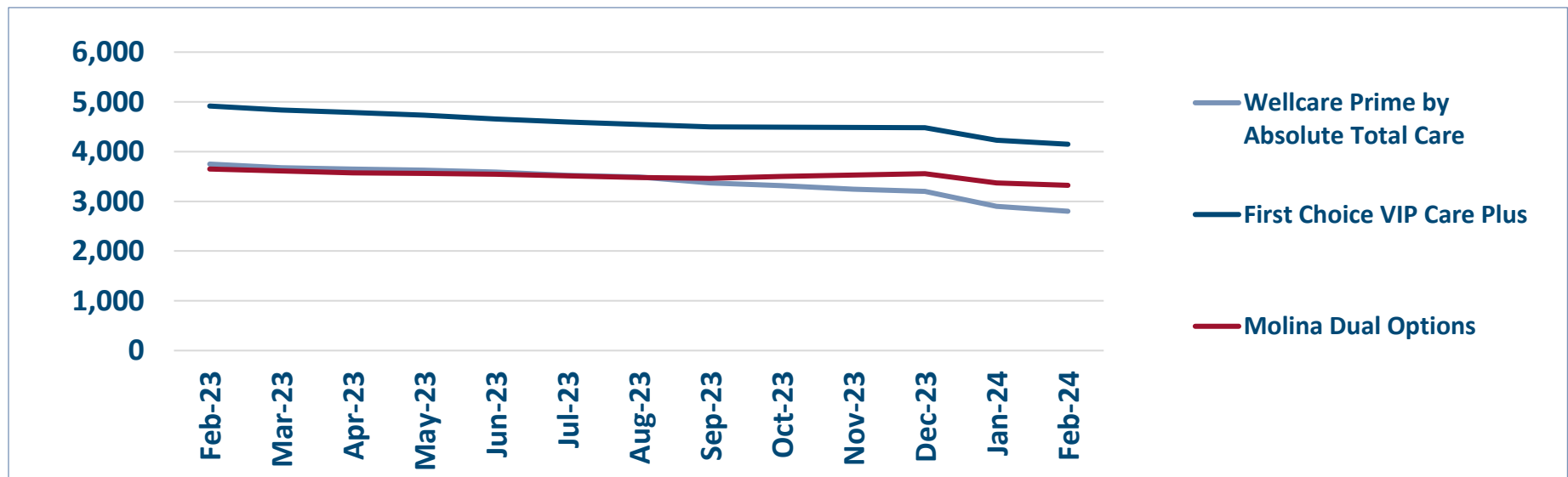


## ENROLLMENT SOURCE BY PLAN

Total: 10,271



## Monthly Enrollment By Plan

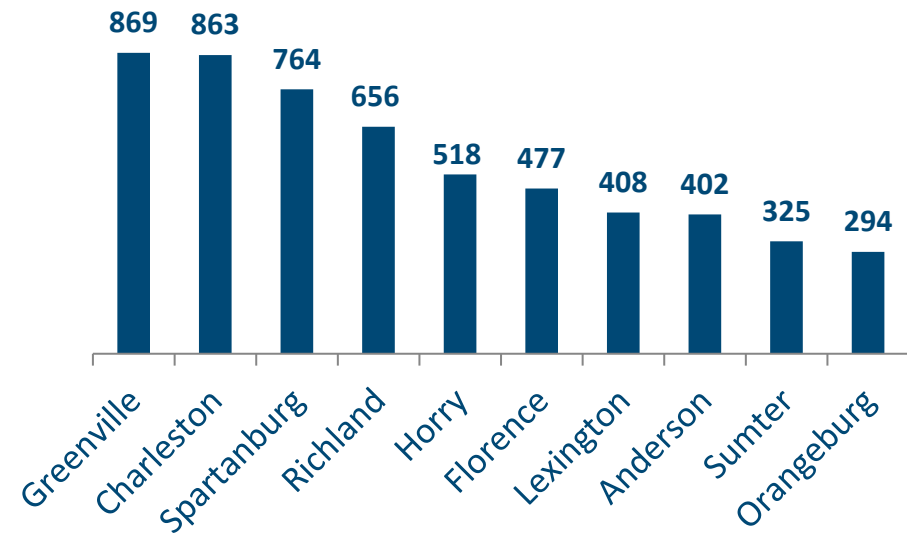


# Healthy Connections Prime Active Enrollment

Feb 2024

County	Wellcare Prime by Absolute Total Care	First Choice VIP Care Plus	Molina Dual Options	County Total
Abbeville	12	31	17	60
Aiken	11	120	65	196
Allendale	5	13	14	32
Anderson	61	269	72	402
Bamberg	14	25	20	59
Barnwell	19	21	33	73
Beaufort	76	117	15	208
Berkeley	107	126	51	284
Calhoun	7	11	22	40
Charleston	254	316	293	863
Cherokee	11	151	31	193
Chester	25	26	32	83
Chesterfield	46	42	47	135
Clarendon	21	51	29	101
Colleton	41	38	65	144
Darlington	154	0	44	198
Dillon	52	45	64	161
Dorchester	22	113	33	168
Edgefield	15	22	24	61
Fairfield	23	33	25	81
Florence	129	176	172	477
Georgetown	66	90	35	191
Greenville	227	296	346	869
Greenwood	24	106	29	159
Hampton	18	28	24	70
Horry	380	0	138	518
Jasper	15	30	16	61
Kershaw	28	82	64	174
Lancaster	35	0	88	123
Laurens	40	68	50	158
Lee	20	32	34	86
Lexington	80	128	200	408
Marion	46	47	58	151
Marlboro	26	37	44	107
McCormick	6	12	13	31
Newberry	21	40	43	104
Oconee	7	129	63	199
Orangeburg	93	143	58	294
Pickens	61	104	78	243
Richland	174	230	252	656
Saluda	5	19	21	45
Spartanburg	144	398	222	764
Sumter	17	285	23	325
Union	12	52	24	88
Williamsburg	35	46	58	139
York	116	0	173	289
<b>Total</b>	<b>2,801</b>	<b>4,148</b>	<b>3,322</b>	<b>10,271</b>

## TOP 10 COUNTIES BY ENROLLMENT



## HEALTHY CONNECTIONS PRIME COUNTY PARTICIPATION

Healthy Connections Prime is available in every county in the state.



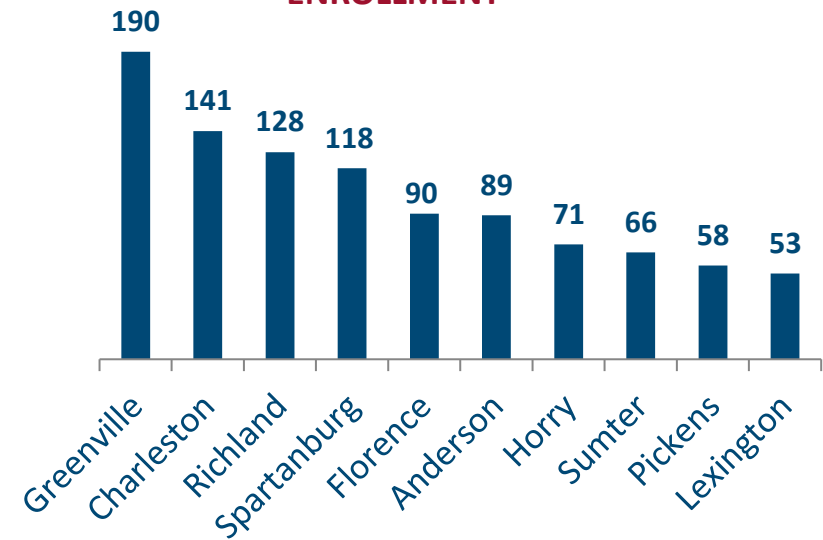
(All counties are available for passive enrollment.)

## Healthy Connections Prime HCBS Waiver Enrollment

Feb  
2024

County	Wellcare Prime by Absolute Total Care	First Choice VIP Care Plus	Molina Dual Options	County Total
Abbeville	2	8	7	17
Aiken	1	8	6	15
Allendale	2	5	4	11
Anderson	11	66	12	89
Bamberg	5	8	2	15
Barnwell	3	3	11	17
Beaufort	19	26	2	47
Berkeley	14	17	5	36
Calhoun	0	2	4	6
Charleston	33	60	48	141
Cherokee	0	23	4	27
Chester	3	3	4	10
Chesterfield	4	4	5	13
Clarendon	7	12	6	25
Colleton	8	7	9	24
Darlington	23	0	4	27
Dillon	7	12	6	25
Dorchester	5	15	2	22
Edgefield	3	4	4	11
Fairfield	7	3	4	14
Florence	23	35	32	90
Georgetown	10	13	3	26
Greenville	52	64	74	190
Greenwood	5	15	6	26
Hampton	6	7	8	21
Horry	56	0	15	71
Jasper	3	7	1	11
Kershaw	3	12	9	24
Lancaster	4	0	10	14
Laurens	9	10	4	23
Lee	5	9	5	19
Lexington	8	22	23	53
Marion	11	15	14	40
Marlboro	3	7	9	19
McCormick	3	1	4	8
Newberry	3	7	7	17
Oconee	0	27	7	34
Orangeburg	16	26	6	48
Pickens	15	24	19	58
Richland	30	56	42	128
Saluda	1	0	4	5
Spartanburg	22	76	20	118
Sumter	2	62	2	66
Union	1	7	4	12
Williamsburg	10	13	18	41
York	12	0	20	32
<b>Total</b>	<b>470</b>	<b>801</b>	<b>515</b>	<b>1,786</b>

### CURRENT TOP 10 COUNTIES BY WAIVER ENROLLMENT



### HCBS WAIVER UTILIZATION

Waiver Service	Total
Community Choices	1,759
HIV/AIDS	25
Mechanical Ventilator Dependent	2
<b>Total</b>	<b>1,786</b>

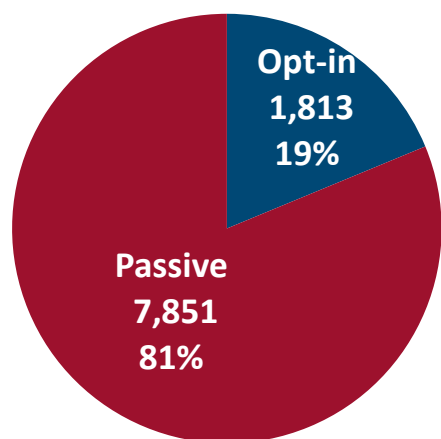
**March 2024**

## March 2024 Active Enrollments

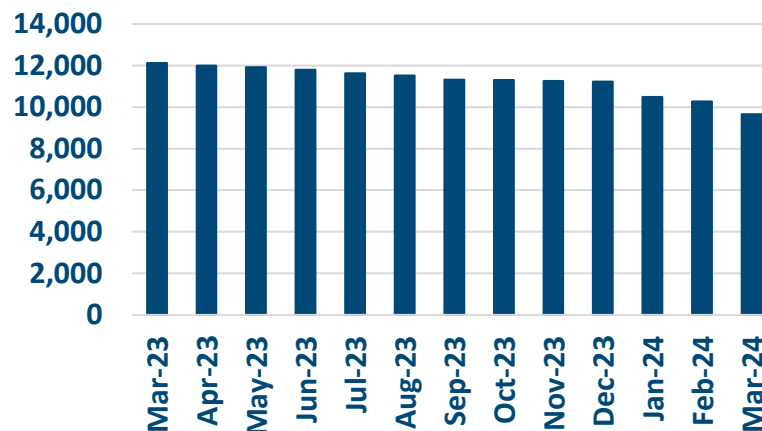


### Enrollment Breakdown by Source

#### OPT-IN VS. PASSIVE ENROLLMENTS



#### TOTAL ENROLLMENT BY MONTH



March Active  
Enrollments  
9,664

February Active  
Enrollments  
10,271

Monthly  
Enrollment Change  
-6%

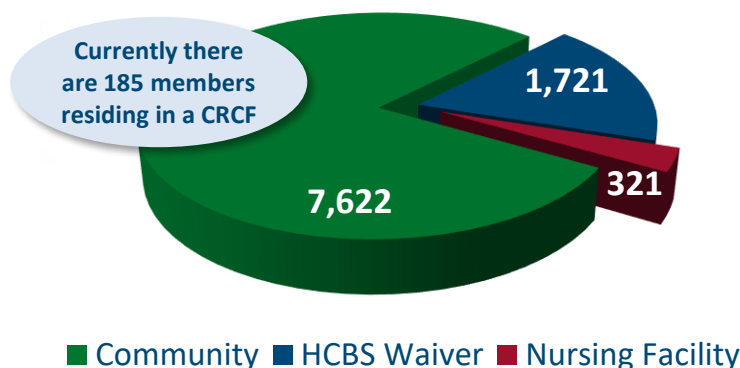
### Nursing Facility Usage and Enrollee Demographics

#### NURSING FACILITY UTILIZATION

Type of Stay	Total
Custodial	321
Non-Custodial*	247
<b>Total</b>	<b>568</b>

\* Portions of this chart are self-reported MMP data.

#### ENROLLEE POPULATION BREAKDOWN



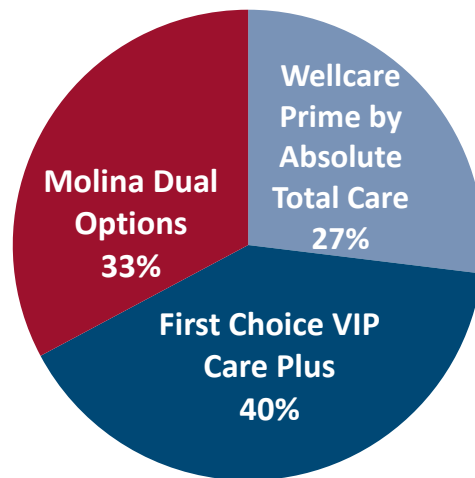
#### Links to MMPs





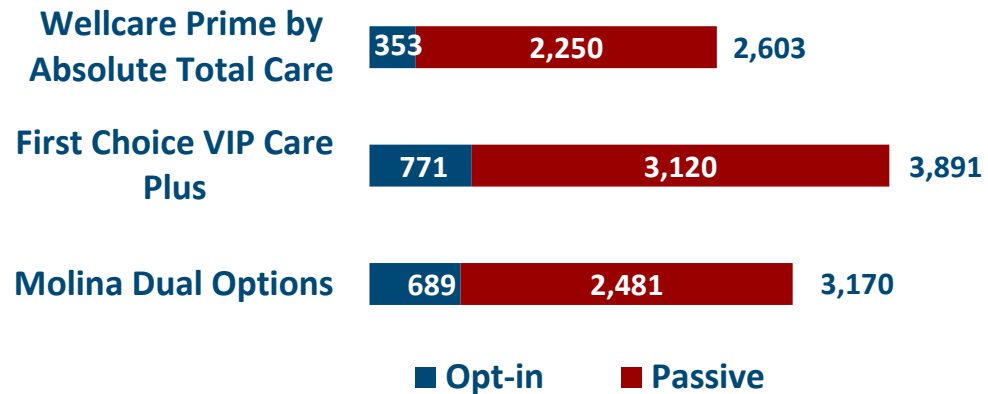
## March 2024 Active Enrollments

## Enrollment by Plan

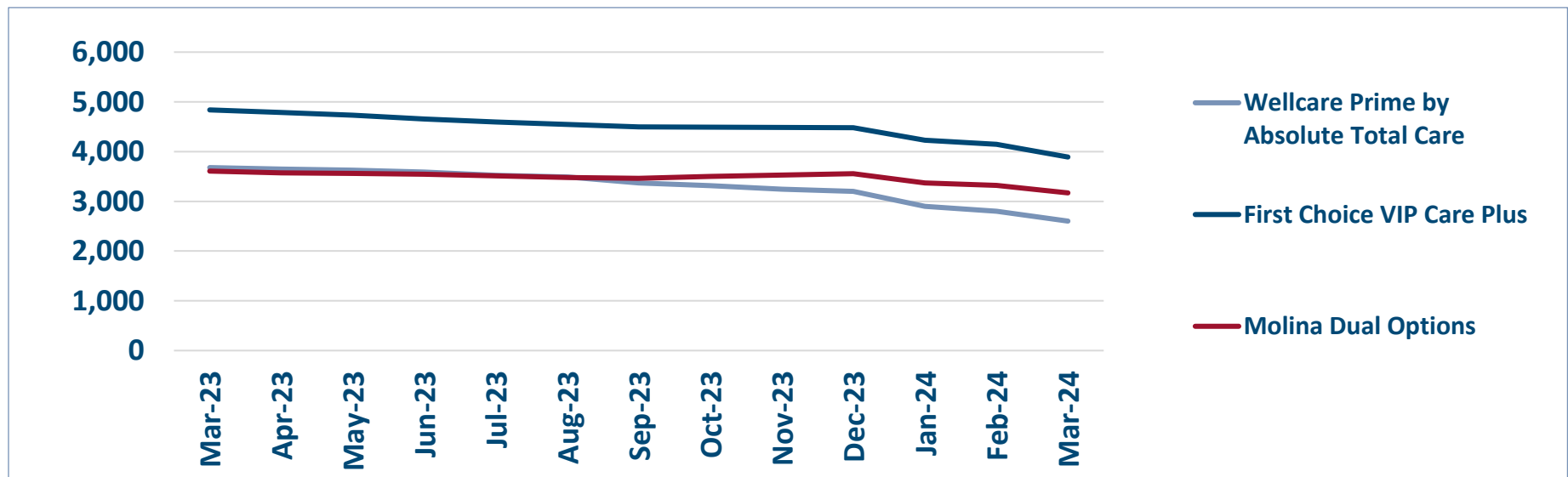


## ENROLLMENT SOURCE BY PLAN

Total: 9,664



## Monthly Enrollment By Plan

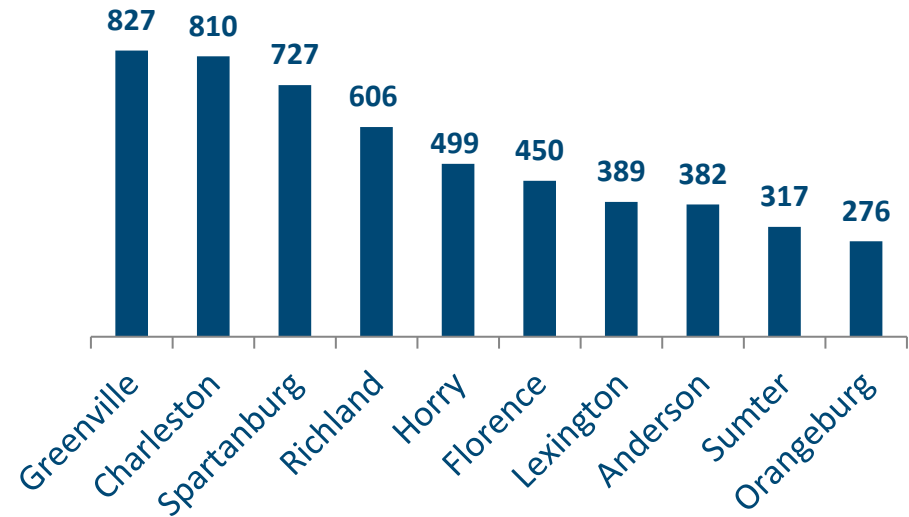


## Healthy Connections Prime Active Enrollment

Mar 2024

County	Wellcare Prime by Absolute Total Care	First Choice VIP Care Plus	Molina Dual Options	County Total
Abbeville	10	29	17	56
Aiken	12	114	65	191
Allendale	5	12	14	31
Anderson	60	250	72	382
Bamberg	14	23	19	56
Barnwell	18	21	31	70
Beaufort	65	115	13	193
Berkeley	102	121	49	272
Calhoun	7	10	18	35
Charleston	239	293	278	810
Cherokee	11	139	30	180
Chester	20	26	28	74
Chesterfield	44	40	42	126
Clarendon	21	49	30	100
Colleton	37	34	56	127
Darlington	142	0	42	184
Dillon	47	39	56	142
Dorchester	20	106	34	160
Edgefield	15	19	24	58
Fairfield	21	31	22	74
Florence	120	165	165	450
Georgetown	59	86	35	180
Greenville	211	275	341	827
Greenwood	25	93	30	148
Hampton	17	28	24	69
Horry	357	0	142	499
Jasper	15	30	16	61
Kershaw	24	75	62	161
Lancaster	32	0	87	119
Laurens	37	60	47	144
Lee	16	31	30	77
Lexington	76	120	193	389
Marion	41	45	53	139
Marlboro	22	37	37	96
McCormick	6	9	13	28
Newberry	20	39	40	99
Oconee	7	127	59	193
Orangeburg	86	135	55	276
Pickens	55	98	73	226
Richland	160	215	231	606
Saluda	5	16	19	40
Spartanburg	136	378	213	727
Sumter	18	273	26	317
Union	11	44	22	77
Williamsburg	34	41	53	128
York	103	0	164	267
<b>Total</b>	<b>2,603</b>	<b>3,891</b>	<b>3,170</b>	<b>9,664</b>

## TOP 10 COUNTIES BY ENROLLMENT



## HEALTHY CONNECTIONS PRIME COUNTY PARTICIPATION

Healthy Connections Prime is available in every county in the state.



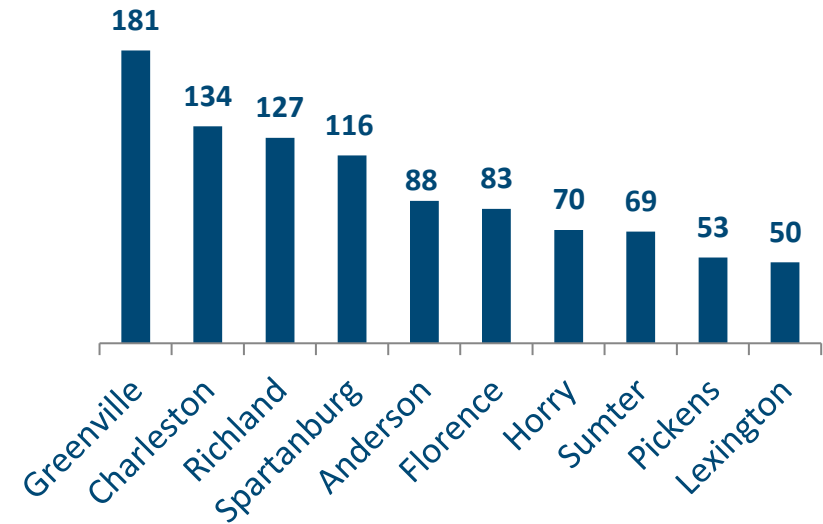
(All counties are available for passive enrollment.)

## Healthy Connections Prime HCBS Waiver Enrollment

Mar  
2024

County	Wellcare Prime by Absolute Total Care	First Choice VIP Care Plus	Molina Dual Options	County Total
Abbeville	2	9	7	18
Aiken	0	8	5	13
Allendale	2	5	4	11
Anderson	11	66	11	88
Bamberg	5	8	2	15
Barnwell	3	3	11	17
Beaufort	18	24	2	44
Berkeley	14	16	5	35
Calhoun	0	2	4	6
Charleston	29	58	47	134
Cherokee	0	22	3	25
Chester	3	3	4	10
Chesterfield	4	4	4	12
Clarendon	7	11	6	24
Colleton	8	6	9	23
Darlington	23	0	4	27
Dillon	7	10	6	23
Dorchester	5	14	2	21
Edgefield	3	4	4	11
Fairfield	7	3	4	14
Florence	22	33	28	83
Georgetown	10	12	2	24
Greenville	50	56	75	181
Greenwood	5	14	6	25
Hampton	6	6	7	19
Horry	55	0	15	70
Jasper	3	7	1	11
Kershaw	3	11	9	23
Lancaster	4	0	10	14
Laurens	9	10	5	24
Lee	4	8	5	17
Lexington	7	21	22	50
Marion	9	15	14	38
Marlboro	2	7	9	18
McCormick	2	0	4	6
Newberry	3	7	8	18
Oconee	0	25	6	31
Orangeburg	16	25	5	46
Pickens	13	23	17	53
Richland	27	56	44	127
Saluda	1	0	4	5
Spartanburg	22	76	18	116
Sumter	2	63	4	69
Union	1	7	3	11
Williamsburg	9	13	18	40
York	12	0	19	31
<b>Total</b>	<b>448</b>	<b>771</b>	<b>502</b>	<b>1,721</b>

### CURRENT TOP 10 COUNTIES BY WAIVER ENROLLMENT



### HCBS WAIVER UTILIZATION

Waiver Service	Total
Community Choices	1,698
HIV/AIDS	22
Mechanical Ventilator Dependent	1
<b>Total</b>	<b>1,721</b>

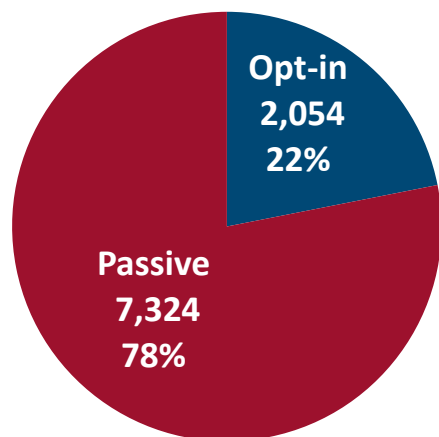
**April 2024**

## April 2024 Active Enrollments

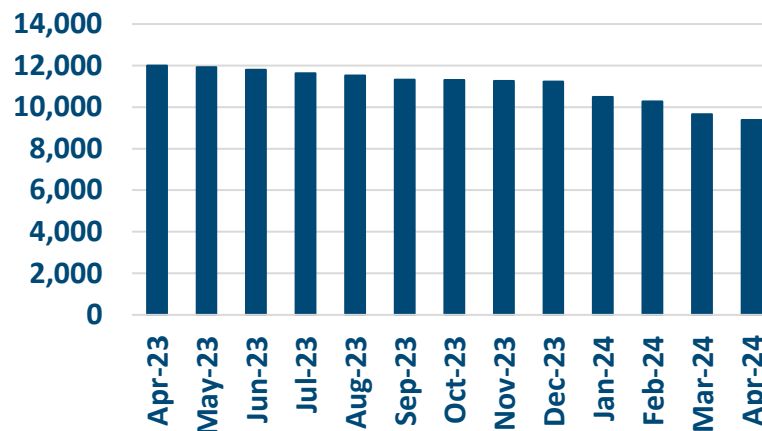


### Enrollment Breakdown by Source

#### OPT-IN VS. PASSIVE ENROLLMENTS



#### TOTAL ENROLLMENT BY MONTH



April Active Enrollments  
9,378

March Active Enrollments  
9,664

Monthly Enrollment Change  
-3%

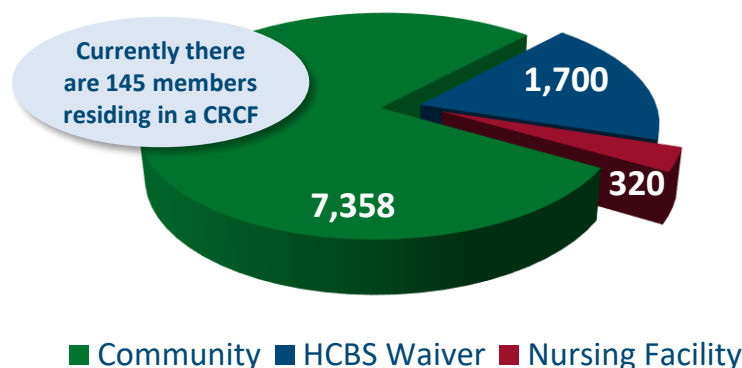
### Nursing Facility Usage and Enrollee Demographics

#### NURSING FACILITY UTILIZATION

Type of Stay	Total
Custodial	320
Non-Custodial*	217
<b>Total</b>	<b>537</b>

\* Portions of this chart are self-reported MMP data.

#### ENROLLEE POPULATION BREAKDOWN

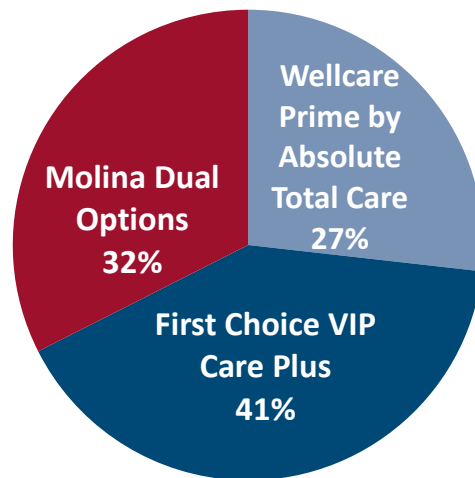


#### Links to MMPs



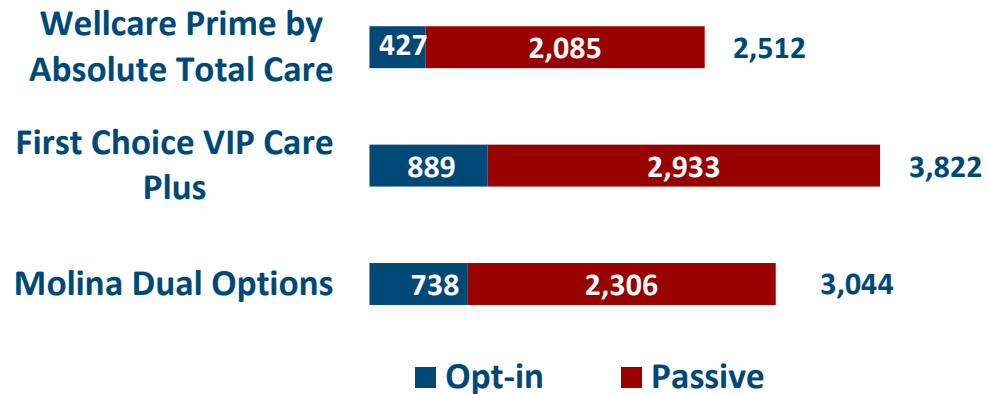
## April 2024 Active Enrollments

## Enrollment by Plan

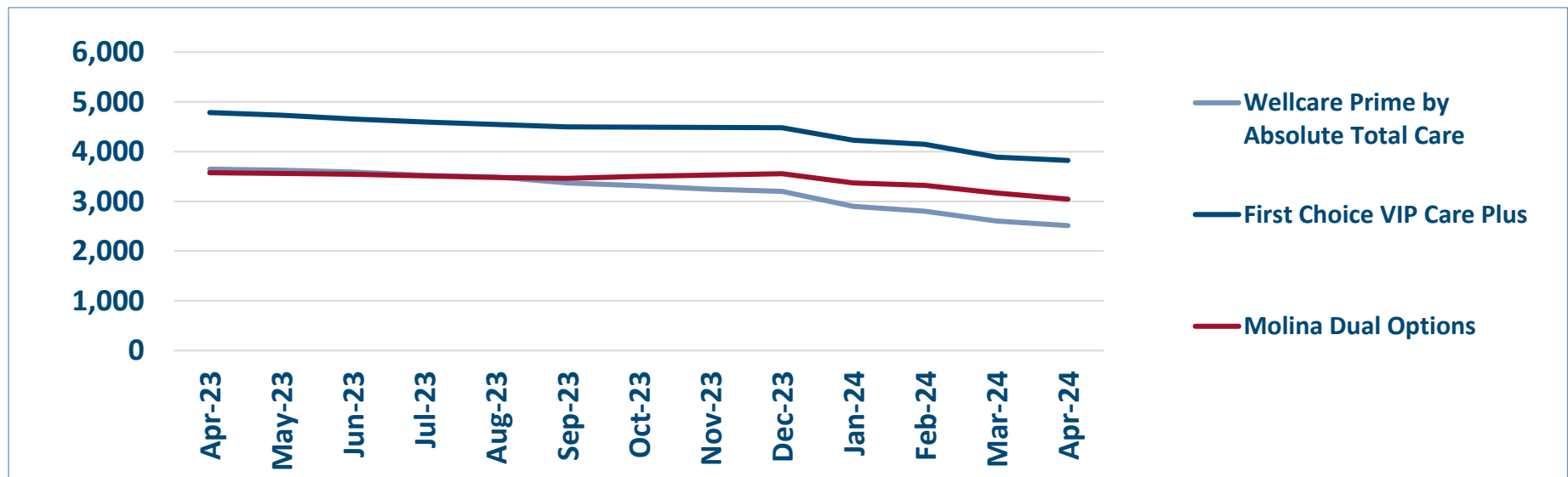


## ENROLLMENT SOURCE BY PLAN

Total: 9,378



## Monthly Enrollment By Plan

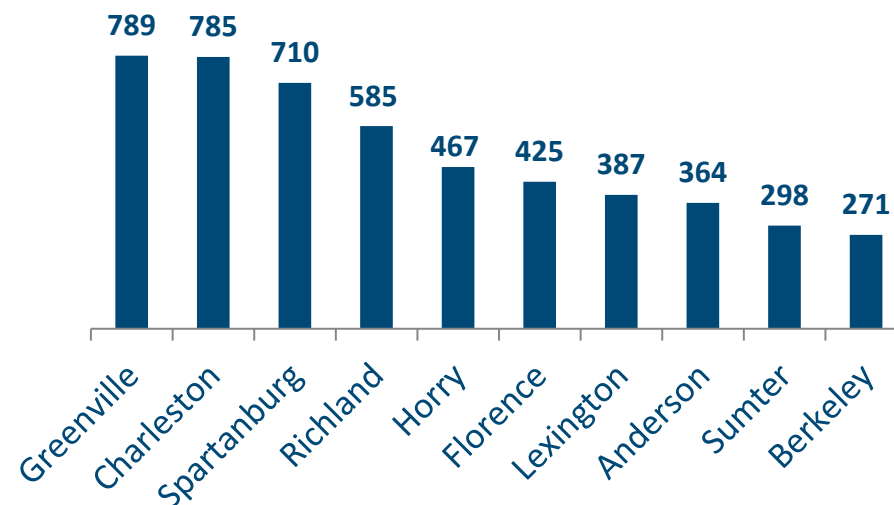


## Healthy Connections Prime Active Enrollment

Apr  
2024

County	Wellcare Prime by Absolute Total Care	First Choice VIP Care Plus	Molina Dual Options	County Total
Abbeville	10	28	18	56
Aiken	12	108	64	184
Allendale	3	12	14	29
Anderson	52	246	66	364
Bamberg	9	23	20	52
Barnwell	17	21	30	68
Beaufort	68	107	13	188
Berkeley	98	121	52	271
Calhoun	6	10	18	34
Charleston	225	289	271	785
Cherokee	10	135	32	177
Chester	20	24	30	74
Chesterfield	44	39	42	125
Clarendon	21	49	31	101
Colleton	35	36	56	127
Darlington	140	0	38	178
Dillon	44	37	55	136
Dorchester	20	105	32	157
Edgefield	14	17	21	52
Fairfield	21	29	25	75
Florence	116	164	145	425
Georgetown	59	88	37	184
Greenville	204	268	317	789
Greenwood	24	99	28	151
Hampton	17	27	21	65
Horry	335	0	132	467
Jasper	12	30	18	60
Kershaw	26	75	61	162
Lancaster	33	0	80	113
Laurens	34	62	43	139
Lee	19	29	32	80
Lexington	76	127	184	387
Marion	40	45	53	138
Marlboro	23	36	35	94
McCormick	5	7	12	24
Newberry	18	37	39	94
Oconee	6	118	51	175
Orangeburg	84	131	53	268
Pickens	57	92	72	221
Richland	151	210	224	585
Saluda	5	16	18	39
Spartanburg	136	374	200	710
Sumter	18	257	23	298
Union	12	51	22	85
Williamsburg	34	43	55	132
York	99	0	161	260
<b>Total</b>	<b>2,512</b>	<b>3,822</b>	<b>3,044</b>	<b>9,378</b>

## TOP 10 COUNTIES BY ENROLLMENT



## HEALTHY CONNECTIONS PRIME COUNTY PARTICIPATION

Healthy Connections Prime is available in every county in the state.



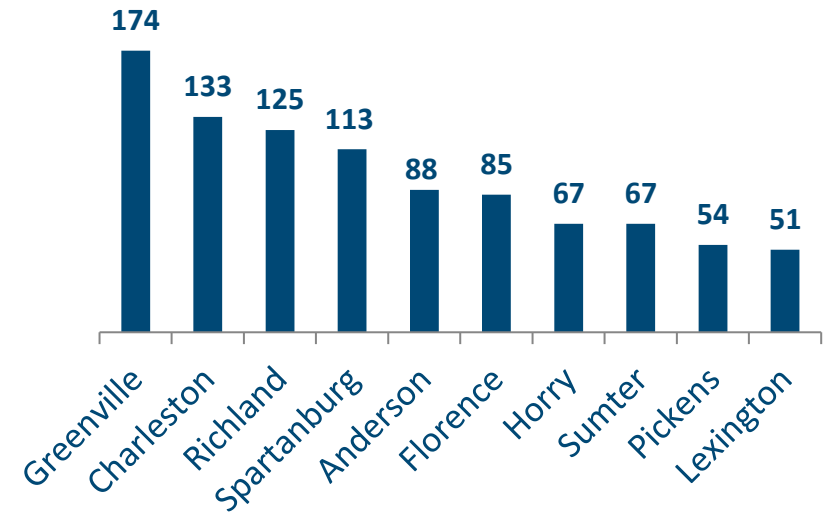
(All counties are available for passive enrollment.)

## Healthy Connections Prime HCBS Waiver Enrollment

Apr  
2024

County	Wellcare Prime by Absolute Total Care	First Choice VIP Care Plus	Molina Dual Options	County Total
Abbeville	2	9	7	18
Aiken	1	8	5	14
Allendale	2	5	4	11
Anderson	12	65	11	88
Bamberg	3	8	2	13
Barnwell	3	3	11	17
Beaufort	18	23	2	43
Berkeley	14	16	5	35
Calhoun	0	2	4	6
Charleston	28	61	44	133
Cherokee	0	23	4	27
Chester	3	3	4	10
Chesterfield	5	4	3	12
Clarendon	7	11	6	24
Colleton	7	8	9	24
Darlington	25	0	4	29
Dillon	7	10	6	23
Dorchester	5	14	1	20
Edgefield	3	4	4	11
Fairfield	6	3	4	13
Florence	23	34	28	85
Georgetown	10	13	3	26
Greenville	48	55	71	174
Greenwood	5	14	6	25
Hampton	5	6	7	18
Horry	52	0	15	67
Jasper	3	7	2	12
Kershaw	3	11	8	22
Lancaster	4	0	8	12
Laurens	9	9	3	21
Lee	5	9	4	18
Lexington	8	21	22	51
Marion	8	14	14	36
Marlboro	3	6	8	17
McCormick	2	0	4	6
Newberry	3	7	7	17
Oconee	0	24	7	31
Orangeburg	15	23	4	42
Pickens	13	24	17	54
Richland	27	54	44	125
Saluda	1	0	4	5
Spartanburg	22	72	19	113
Sumter	2	62	3	67
Union	1	7	3	11
Williamsburg	10	13	18	41
York	12	0	21	33
<b>Total</b>	<b>445</b>	<b>765</b>	<b>490</b>	<b>1,700</b>

### CURRENT TOP 10 COUNTIES BY WAIVER ENROLLMENT



### HCBS WAIVER UTILIZATION

Waiver Service	Total
Community Choices	1,678
HIV/AIDS	21
Mechanical Ventilator Dependent	1
<b>Total</b>	<b>1,700</b>



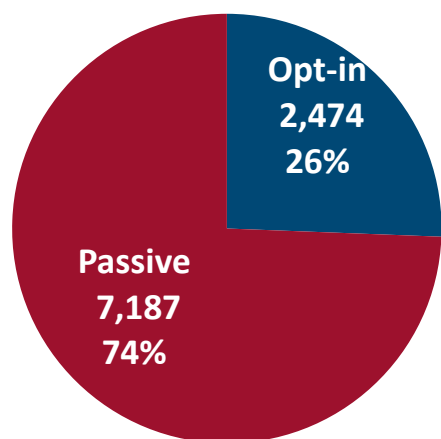
**May 2024**

## May 2024 Active Enrollments

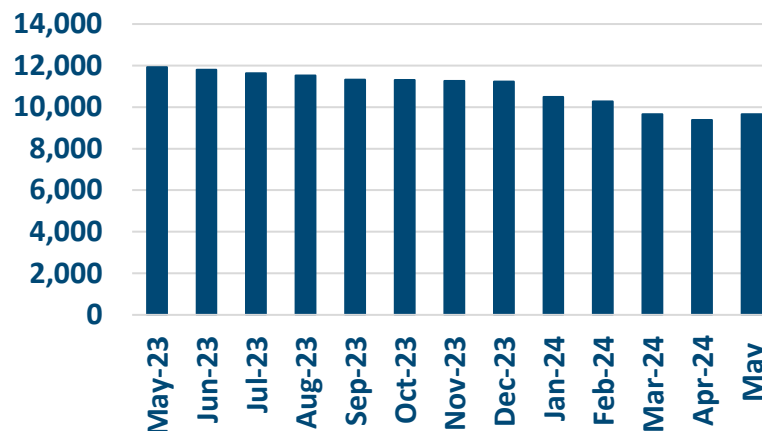


### Enrollment Breakdown by Source

#### OPT-IN VS. PASSIVE ENROLLMENTS



#### TOTAL ENROLLMENT BY MONTH



May Active Enrollments  
9,661

April Active Enrollments  
9,378

Monthly  
Enrollment Change  
3%

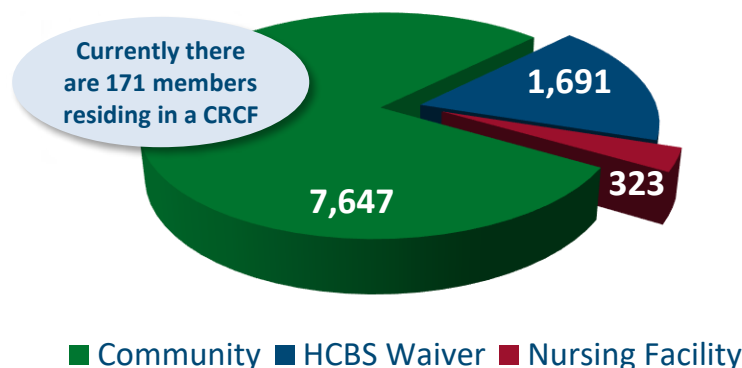
### Nursing Facility Usage and Enrollee Demographics

#### NURSING FACILITY UTILIZATION

Type of Stay	Total
Custodial	323
Non-Custodial*	234
<b>Total</b>	<b>557</b>

\* Portions of this chart are self-reported MMP data.

#### ENROLLEE POPULATION BREAKDOWN



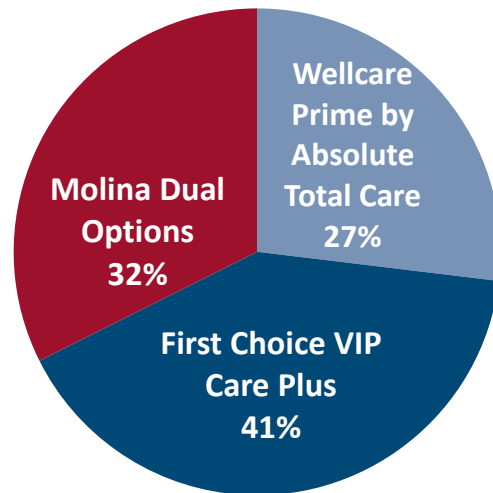
■ Community ■ HCBS Waiver ■ Nursing Facility

#### Links to MMPs



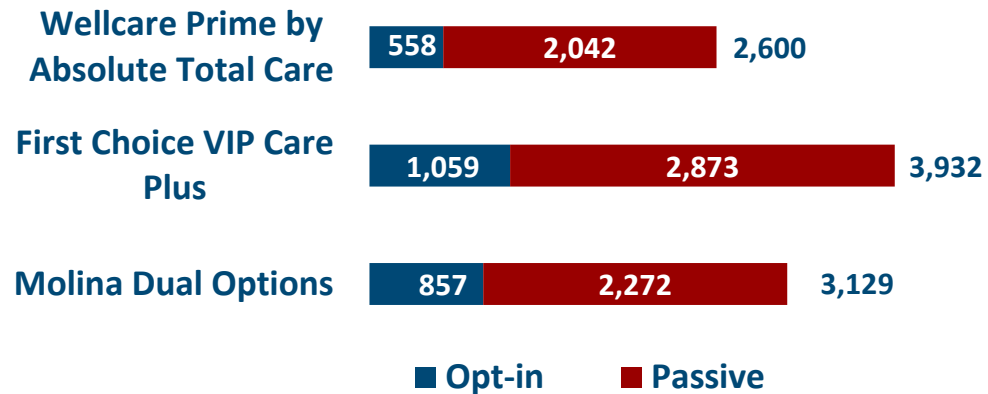
## May 2024 Active Enrollments

## Enrollment by Plan

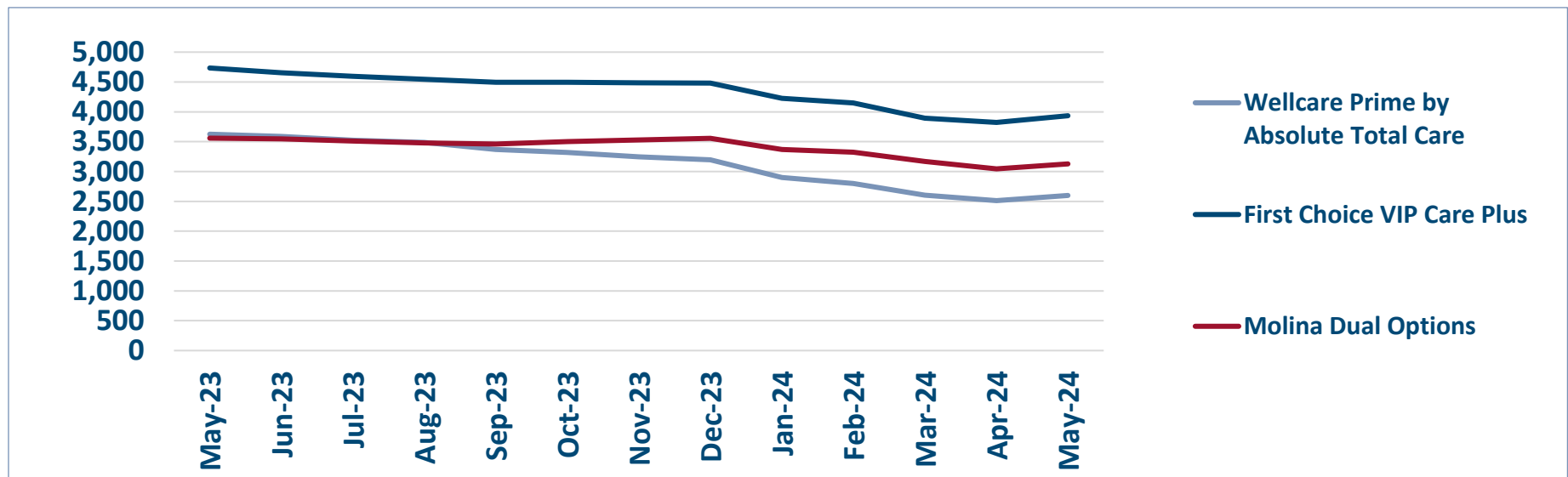


## ENROLLMENT SOURCE BY PLAN

Total: 9,661



## Monthly Enrollment By Plan

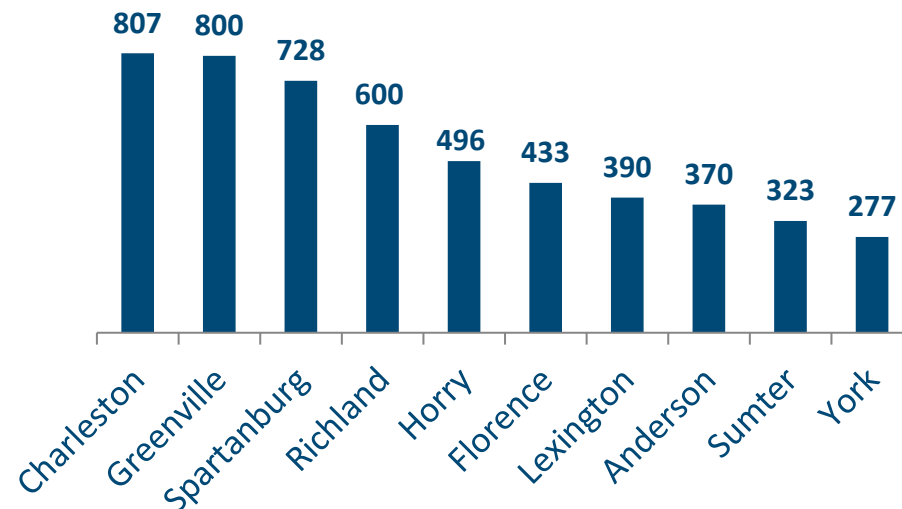


## Healthy Connections Prime Active Enrollment

May  
2024

County	Wellcare Prime by Absolute Total Care	First Choice VIP Care Plus	Molina Dual Options	County Total
Abbeville	9	32	18	59
Aiken	14	117	65	196
Allendale	4	13	14	31
Anderson	53	251	66	370
Bamberg	12	22	19	53
Barnwell	18	20	29	67
Beaufort	67	107	14	188
Berkeley	99	124	51	274
Calhoun	5	11	18	34
Charleston	237	297	273	807
Cherokee	12	150	30	192
Chester	22	28	32	82
Chesterfield	43	39	45	127
Clarendon	22	48	32	102
Colleton	38	39	63	140
Darlington	142	0	39	181
Dillon	46	38	54	138
Dorchester	22	104	34	160
Edgefield	15	19	24	58
Fairfield	20	31	23	74
Florence	119	163	151	433
Georgetown	62	87	34	183
Greenville	204	269	327	800
Greenwood	22	101	30	153
Hampton	17	28	23	68
Horry	358	0	138	496
Jasper	15	32	19	66
Kershaw	25	77	63	165
Lancaster	35	0	86	121
Laurens	37	64	47	148
Lee	19	31	32	82
Lexington	76	129	185	390
Marion	40	46	54	140
Marlboro	23	35	38	96
McCormick	5	10	12	27
Newberry	21	38	39	98
Oconee	5	124	50	179
Orangeburg	84	130	53	267
Pickens	62	96	74	232
Richland	155	215	230	600
Saluda	5	16	20	41
Spartanburg	138	381	209	728
Sumter	20	278	25	323
Union	12	50	22	84
Williamsburg	33	42	56	131
York	108	0	169	277
<b>Total</b>	<b>2,600</b>	<b>3,932</b>	<b>3,129</b>	<b>9,661</b>

## TOP 10 COUNTIES BY ENROLLMENT



## HEALTHY CONNECTIONS PRIME COUNTY PARTICIPATION

Healthy Connections Prime is available in every county in the state.



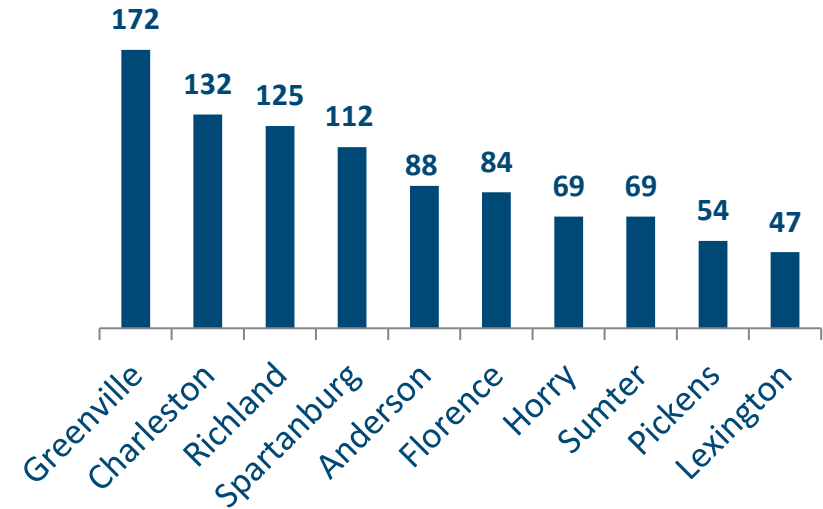
(All counties are available for passive enrollment.)

## Healthy Connections Prime HCBS Waiver Enrollment

May 2024

County	Wellcare Prime by Absolute Total Care	First Choice VIP Care Plus	Molina Dual Options	County Total
Abbeville	2	9	7	18
Aiken	2	7	5	14
Allendale	2	5	4	11
Anderson	12	66	10	88
Bamberg	4	8	2	14
Barnwell	4	3	10	17
Beaufort	17	23	2	42
Berkeley	14	14	5	33
Calhoun	0	2	4	6
Charleston	29	59	44	132
Cherokee	0	23	4	27
Chester	3	3	4	10
Chesterfield	5	4	4	13
Clarendon	7	11	8	26
Colleton	8	8	9	25
Darlington	24	0	4	28
Dillon	7	10	6	23
Dorchester	5	13	2	20
Edgefield	3	4	3	10
Fairfield	5	3	4	12
Florence	24	32	28	84
Georgetown	10	12	2	24
Greenville	47	51	74	172
Greenwood	5	13	6	24
Hampton	5	6	7	18
Horry	54	0	15	69
Jasper	4	7	2	13
Kershaw	3	11	8	22
Lancaster	4	0	8	12
Laurens	9	10	4	23
Lee	5	9	4	18
Lexington	6	21	20	47
Marion	8	14	15	37
Marlboro	2	7	9	18
McCormick	2	0	4	6
Newberry	3	6	8	17
Oconee	0	24	7	31
Orangeburg	16	20	4	40
Pickens	13	24	17	54
Richland	27	55	43	125
Saluda	1	0	4	5
Spartanburg	21	73	18	112
Sumter	2	62	5	69
Union	1	6	4	11
Williamsburg	10	11	18	39
York	13	0	19	32
<b>Total</b>	<b>448</b>	<b>749</b>	<b>494</b>	<b>1,691</b>

## CURRENT TOP 10 COUNTIES BY WAIVER ENROLLMENT



## HCBS WAIVER UTILIZATION

Waiver Service	Total
Community Choices	1,670
HIV/AIDS	20
Mechanical Ventilator Dependent	1
<b>Total</b>	<b>1,691</b>

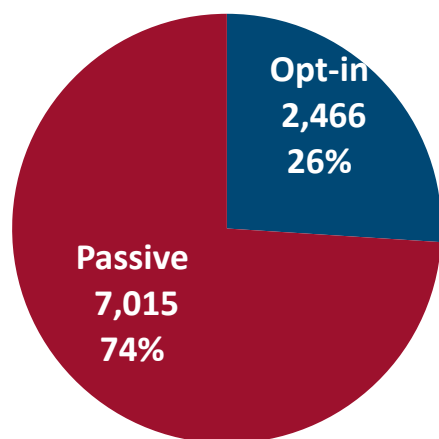
**June 2024**

## June 2024 Active Enrollments

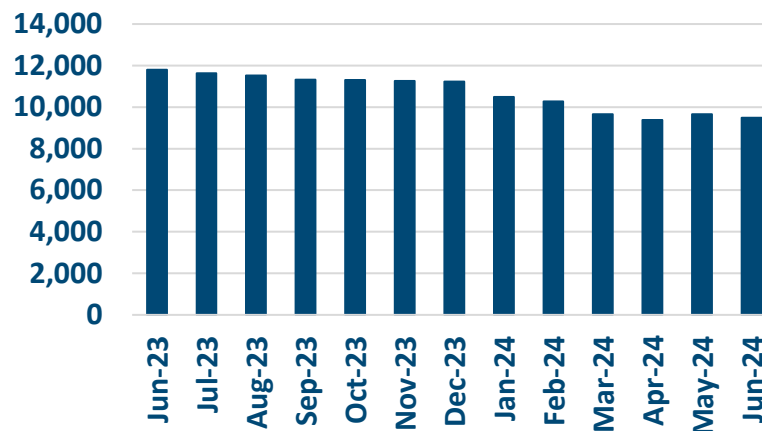


### Enrollment Breakdown by Source

#### OPT-IN VS. PASSIVE ENROLLMENTS



#### TOTAL ENROLLMENT BY MONTH



June Active Enrollments  
9,481

May Active Enrollments  
9,661

Monthly  
Enrollment Change  
-2%

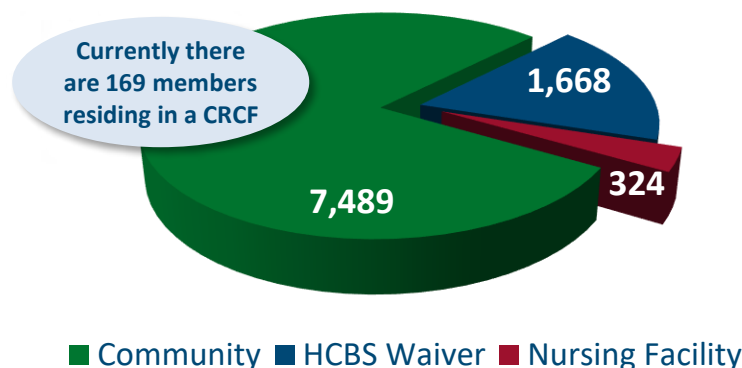
### Nursing Facility Usage and Enrollee Demographics

#### NURSING FACILITY UTILIZATION

Type of Stay	Total
Custodial	324
Non-Custodial*	217
<b>Total</b>	<b>541</b>

\* Portions of this chart are self-reported MMP data.

#### ENROLLEE POPULATION BREAKDOWN



### June 2024 Stakeholder Update

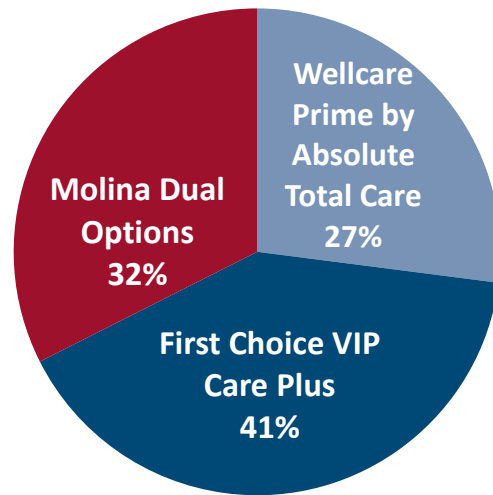
Healthy Connections Prime has released its June 2024 Stakeholder Update!

Some of the topics covered include the recent Healthy Connections Prime website update and updates to member co-payments.

All Stakeholder Updates can be found [here](#).

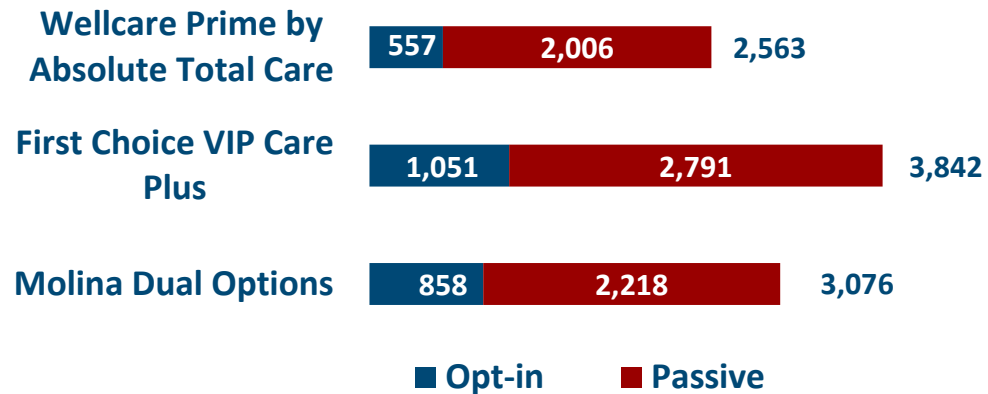
## June 2024 Active Enrollments

## Enrollment by Plan

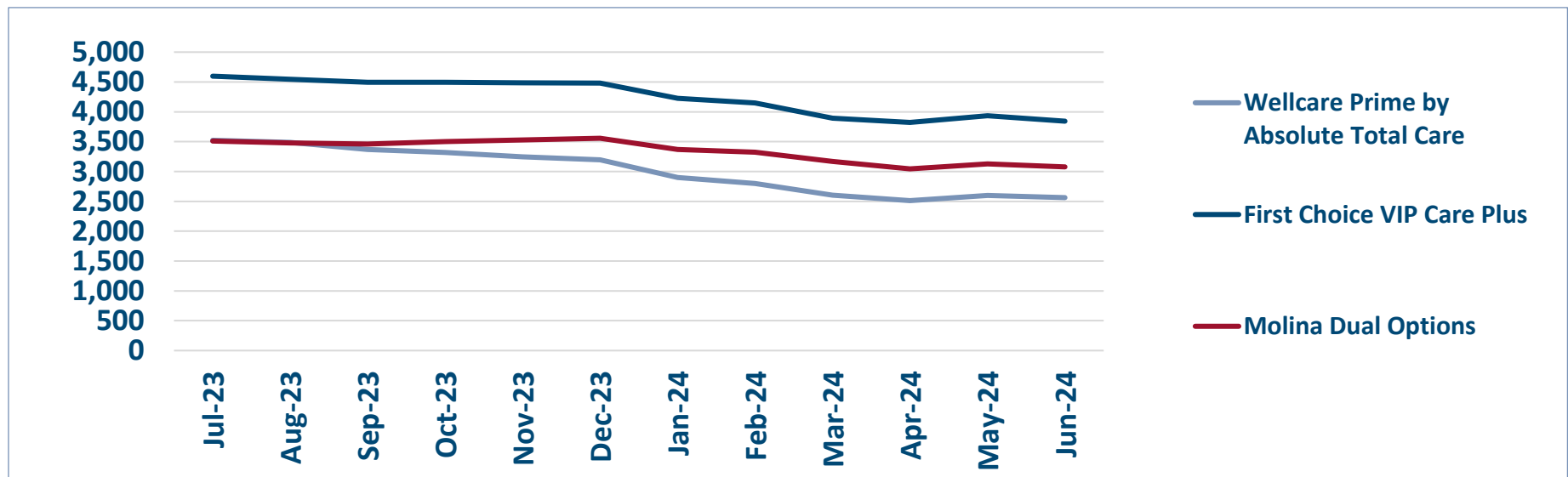


## ENROLLMENT SOURCE BY PLAN

Total: 9,481



## Monthly Enrollment By Plan



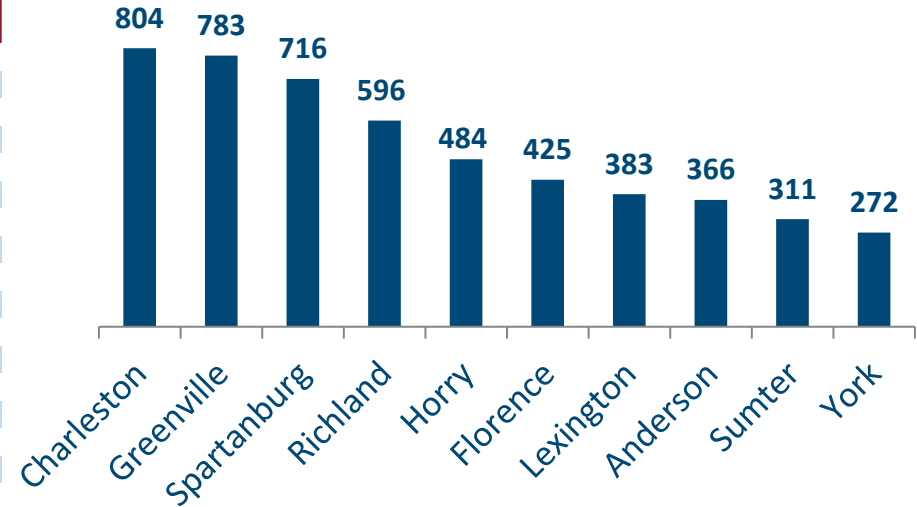


# Healthy Connections Prime Active Enrollment

Jun  
2024

County	Wellcare Prime by Absolute Total Care	First Choice VIP Care Plus	Molina Dual Options	County Total
Abbeville	8	29	17	54
Aiken	13	114	65	192
Allendale	4	13	14	31
Anderson	52	244	70	366
Bamberg	12	21	19	52
Barnwell	17	20	28	65
Beaufort	64	108	14	186
Berkeley	99	122	47	268
Calhoun	5	10	16	31
Charleston	235	297	272	804
Cherokee	12	146	30	188
Chester	22	27	32	81
Chesterfield	43	40	44	127
Clarendon	21	46	32	99
Colleton	37	38	62	137
Darlington	140	0	39	179
Dillon	44	36	54	134
Dorchester	23	101	35	159
Edgefield	15	18	24	57
Fairfield	18	32	22	72
Florence	118	162	145	425
Georgetown	62	83	35	180
Greenville	197	265	321	783
Greenwood	21	99	29	149
Hampton	16	26	23	65
Horry	355	0	129	484
Jasper	15	31	19	65
Kershaw	26	73	63	162
Lancaster	35	0	83	118
Laurens	36	61	44	141
Lee	19	29	30	78
Lexington	79	125	179	383
Marion	39	47	53	139
Marlboro	22	35	35	92
McCormick	5	9	12	26
Newberry	21	36	37	94
Oconee	5	121	51	177
Orangeburg	86	131	53	270
Pickens	60	89	75	224
Richland	153	211	232	596
Saluda	5	16	20	41
Spartanburg	138	374	204	716
Sumter	20	265	26	311
Union	10	51	21	82
Williamsburg	32	41	53	126
York	104	0	168	272
<b>Total</b>	<b>2,563</b>	<b>3,842</b>	<b>3,076</b>	<b>9,481</b>

## TOP 10 COUNTIES BY ENROLLMENT



## HEALTHY CONNECTIONS PRIME COUNTY PARTICIPATION

Healthy Connections Prime is available in every county in the state.



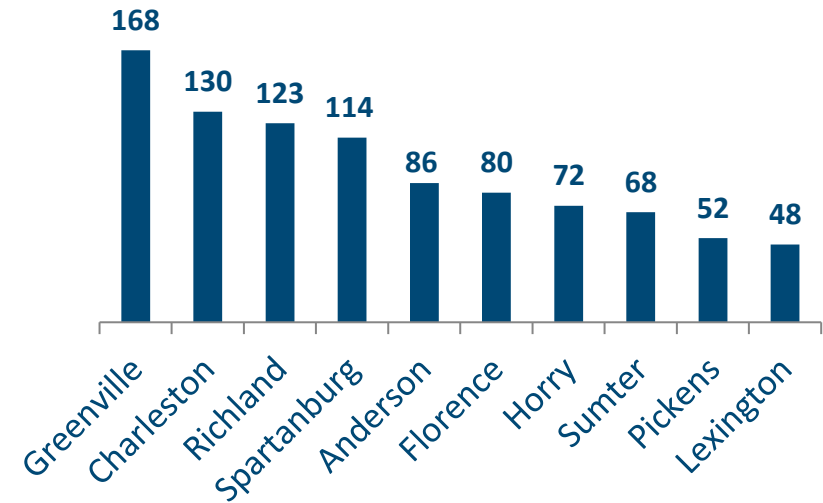
(All counties are available for passive enrollment.)

## Healthy Connections Prime HCBS Waiver Enrollment

Jun  
2024

County	Wellcare Prime by Absolute Total Care	First Choice VIP Care Plus	Molina Dual Options	County Total
Abbeville	2	9	6	17
Aiken	2	6	6	14
Allendale	2	5	4	11
Anderson	11	65	10	86
Bamberg	4	8	2	14
Barnwell	5	3	9	17
Beaufort	16	24	3	43
Berkeley	13	13	5	31
Calhoun	0	2	4	6
Charleston	29	58	43	130
Cherokee	0	22	4	26
Chester	3	3	5	11
Chesterfield	4	3	4	11
Clarendon	7	12	8	27
Colleton	8	8	9	25
Darlington	24	0	3	27
Dillon	7	12	6	25
Dorchester	6	11	2	19
Edgefield	3	4	3	10
Fairfield	5	3	4	12
Florence	23	32	25	80
Georgetown	10	13	2	25
Greenville	45	50	73	168
Greenwood	5	13	6	24
Hampton	4	5	7	16
Horry	56	0	16	72
Jasper	4	7	2	13
Kershaw	3	11	7	21
Lancaster	4	0	7	11
Laurens	10	10	4	24
Lee	5	8	3	16
Lexington	8	19	21	48
Marion	8	14	15	37
Marlboro	2	7	8	17
McCormick	2	0	4	6
Newberry	3	4	8	15
Oconee	0	23	6	29
Orangeburg	17	20	5	42
Pickens	13	22	17	52
Richland	26	52	45	123
Saluda	1	0	4	5
Spartanburg	23	74	17	114
Sumter	2	61	5	68
Union	1	6	4	11
Williamsburg	9	11	16	36
York	12	0	21	33
<b>Total</b>	<b>447</b>	<b>733</b>	<b>488</b>	<b>1,668</b>

### CURRENT TOP 10 COUNTIES BY WAIVER ENROLLMENT



### HCBS WAIVER UTILIZATION

Waiver Service	Total
Community Choices	1,647
HIV/AIDS	20
Mechanical Ventilator Dependent	1
<b>Total</b>	<b>1,668</b>

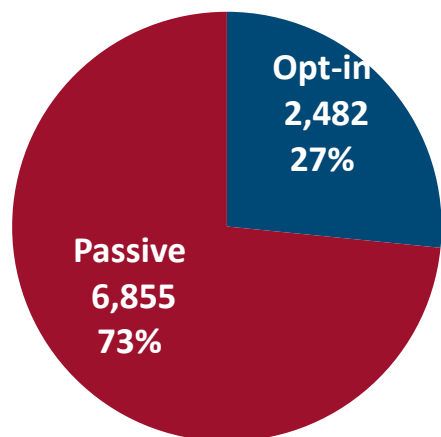
**July 2024**

## July 2024 Active Enrollments

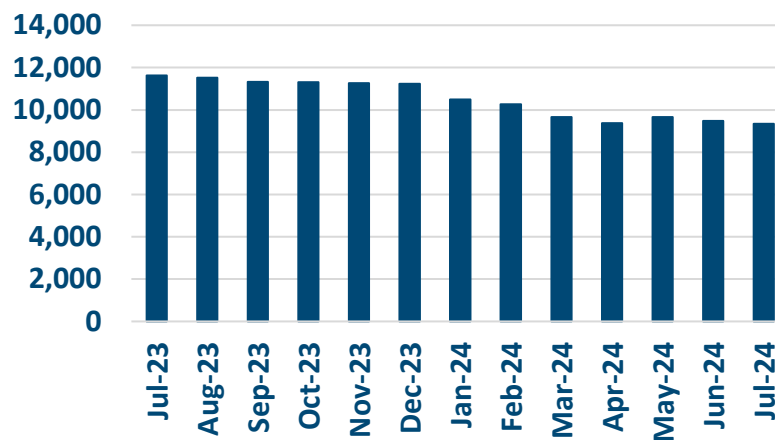


### Enrollment Breakdown by Source

#### OPT-IN VS. PASSIVE ENROLLMENTS



#### TOTAL ENROLLMENT BY MONTH



July Active Enrollments  
9,337

June Active Enrollments  
9,481

Monthly  
Enrollment Change  
-2%

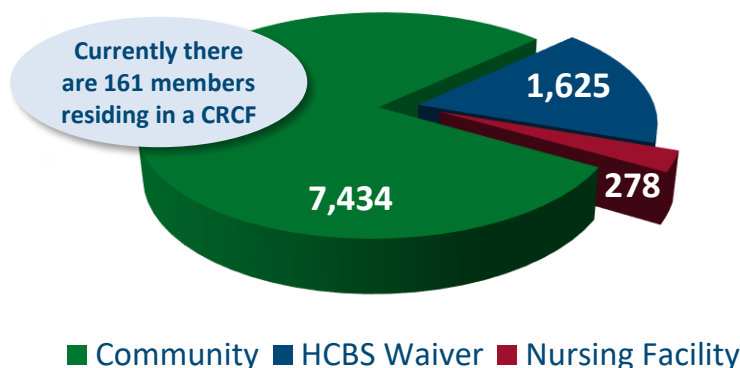
### Nursing Facility Usage and Enrollee Demographics

#### NURSING FACILITY UTILIZATION

Type of Stay	Total
Custodial	278
Non-Custodial*	214
<b>Total</b>	<b>492</b>

\* Portions of this chart are self-reported MMP data.

#### ENROLLEE POPULATION BREAKDOWN



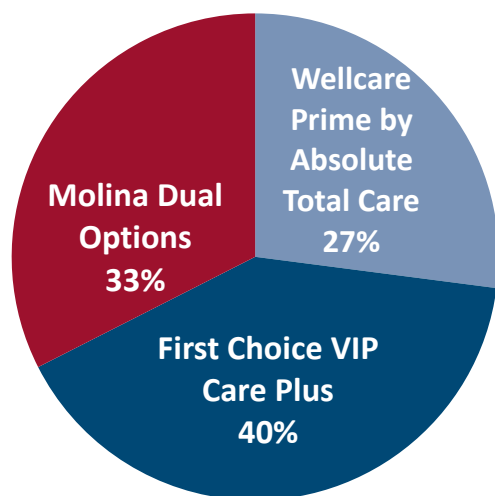
#### Links to MMPs



# July 2024 Active Enrollments

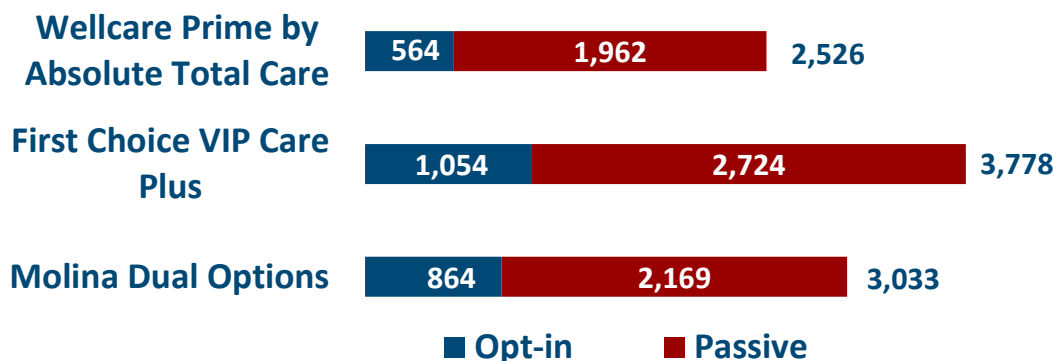


## Enrollment by Plan

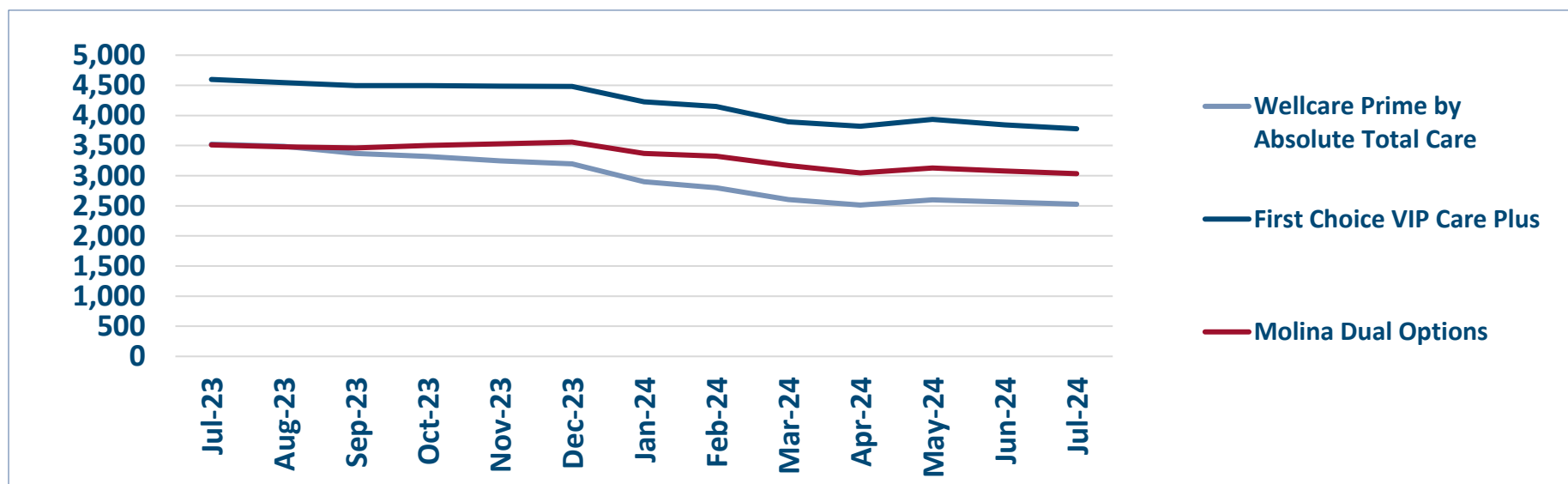


## ENROLLMENT SOURCE BY PLAN

Total: 9,481



## Monthly Enrollment By Plan

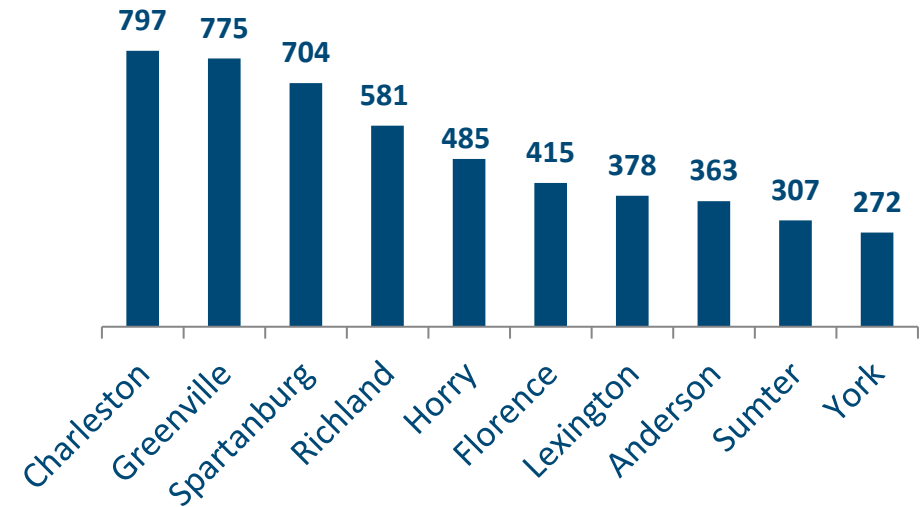


## Healthy Connections Prime Active Enrollment

Jul  
2024

County	Wellcare Prime by Absolute Total Care	First Choice VIP Care Plus	Molina Dual Options	County Total
Abbeville	7	30	17	54
Aiken	12	113	65	190
Allendale	4	13	14	31
Anderson	50	244	69	363
Bamberg	13	21	19	53
Barnwell	16	19	28	63
Beaufort	64	102	12	178
Berkeley	98	124	48	270
Calhoun	5	11	15	31
Charleston	232	300	265	797
Cherokee	12	145	29	186
Chester	21	25	31	77
Chesterfield	41	38	45	124
Clarendon	22	45	32	99
Colleton	36	36	62	134
Darlington	136	0	39	175
Dillon	41	39	54	134
Dorchester	23	97	36	156
Edgefield	14	18	25	57
Fairfield	18	32	22	72
Florence	123	151	141	415
Georgetown	60	81	35	176
Greenville	194	264	317	775
Greenwood	21	98	26	145
Hampton	15	26	23	64
Horry	352	0	133	485
Jasper	14	30	18	62
Kershaw	23	73	61	157
Lancaster	34	0	81	115
Laurens	34	59	42	135
Lee	20	27	31	78
Lexington	80	122	176	378
Marion	39	47	52	138
Marlboro	20	34	35	89
McCormick	5	8	12	25
Newberry	20	36	36	92
Oconee	7	119	51	177
Orangeburg	85	129	52	266
Pickens	59	91	75	225
Richland	149	203	229	581
Saluda	5	16	16	37
Spartanburg	137	365	202	704
Sumter	20	260	27	307
Union	10	49	21	80
Williamsburg	30	38	47	115
York	105	0	167	272
<b>Total</b>	<b>2,526</b>	<b>3,778</b>	<b>3,033</b>	<b>9,337</b>

## TOP 10 COUNTIES BY ENROLLMENT



## HEALTHY CONNECTIONS PRIME COUNTY PARTICIPATION

Healthy Connections Prime is available in every county in the state.



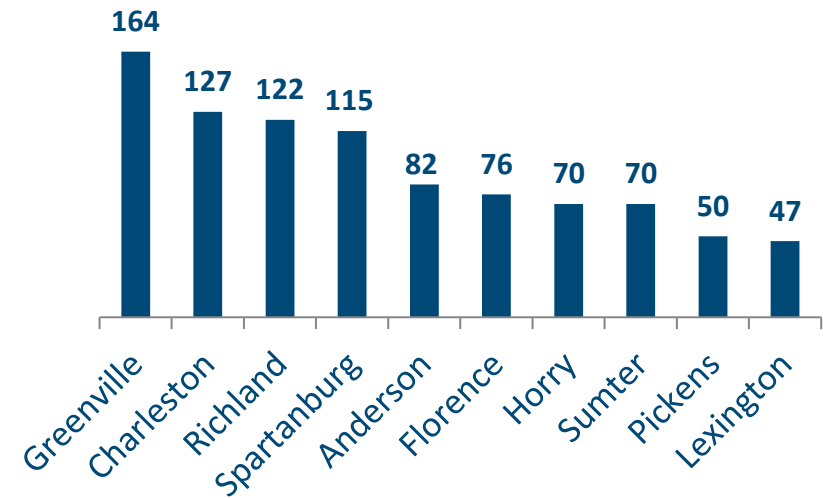
(All counties are available for passive enrollment.)

## Healthy Connections Prime HCBS Waiver Enrollment

Jul  
2024

County	Wellcare Prime by Absolute Total Care	First Choice VIP Care Plus	Molina Dual Options	County Total
Abbeville	2	9	6	17
Aiken	1	6	5	12
Allendale	2	5	3	10
Anderson	10	62	10	82
Bamberg	4	8	2	14
Barnwell	4	3	8	15
Beaufort	14	23	3	40
Berkeley	13	14	5	32
Calhoun	0	2	4	6
Charleston	25	58	44	127
Cherokee	0	22	3	25
Chester	3	3	4	10
Chesterfield	4	3	4	11
Clarendon	6	12	8	26
Colleton	7	7	8	22
Darlington	23	0	2	25
Dillon	7	12	6	25
Dorchester	5	11	2	18
Edgefield	3	4	3	10
Fairfield	5	3	4	12
Florence	23	29	24	76
Georgetown	10	12	2	24
Greenville	42	50	72	164
Greenwood	5	14	6	25
Hampton	3	5	7	15
Horry	54	0	16	70
Jasper	4	8	2	14
Kershaw	3	11	7	21
Lancaster	4	0	6	10
Laurens	9	10	3	22
Lee	5	8	3	16
Lexington	9	18	20	47
Marion	6	14	14	34
Marlboro	2	7	8	17
McCormick	2	0	4	6
Newberry	3	3	8	14
Oconee	1	24	6	31
Orangeburg	18	19	5	42
Pickens	12	21	17	50
Richland	27	53	42	122
Saluda	1	0	3	4
Spartanburg	25	72	18	115
Sumter	4	61	5	70
Union	1	5	4	10
Williamsburg	9	11	14	34
York	12	0	21	33
<b>Total</b>	<b>432</b>	<b>722</b>	<b>471</b>	<b>1,625</b>

### CURRENT TOP 10 COUNTIES BY WAIVER ENROLLMENT



### HCBS WAIVER UTILIZATION

Waiver Service	Total
Community Choices	1,605
HIV/AIDS	19
Mechanical Ventilator Dependent	1
<b>Total</b>	<b>1,625</b>

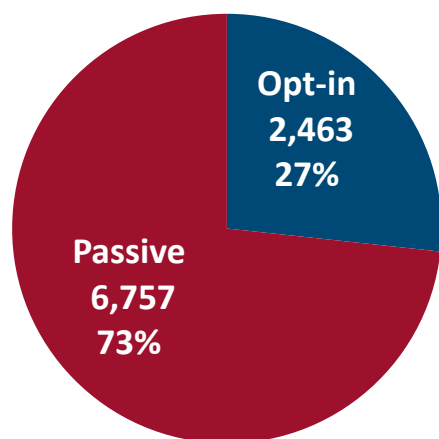
**August 2024**



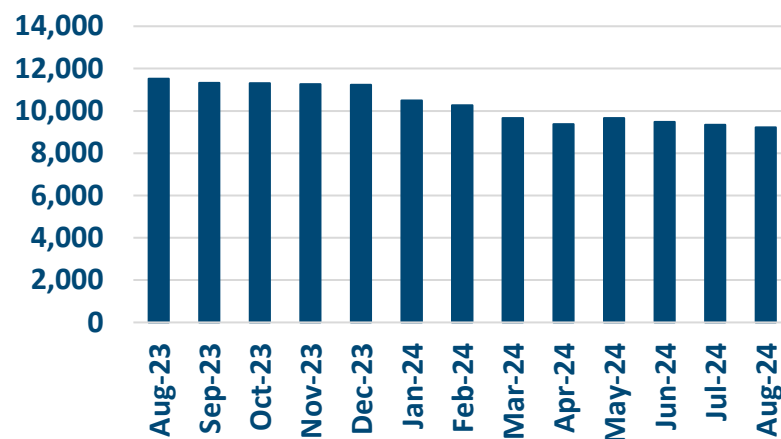
## August 2024 Active Enrollments

### Enrollment Breakdown by Source

#### OPT-IN VS. PASSIVE ENROLLMENTS



#### TOTAL ENROLLMENT BY MONTH



August Active  
Enrollments  
9,220

July Active Enrollments  
9,337

Monthly  
Enrollment Change  
-1%

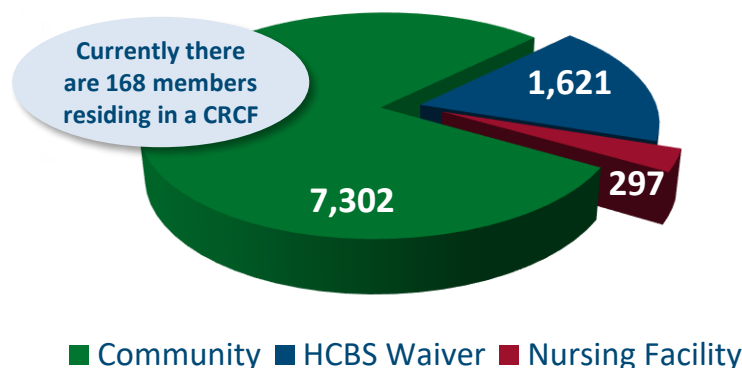
### Nursing Facility Usage and Enrollee Demographics

#### NURSING FACILITY UTILIZATION

Type of Stay	Total
Custodial	297
Non-Custodial*	216
<b>Total</b>	<b>513</b>

\* Portions of this chart are self-reported MMP data.

#### ENROLLEE POPULATION BREAKDOWN



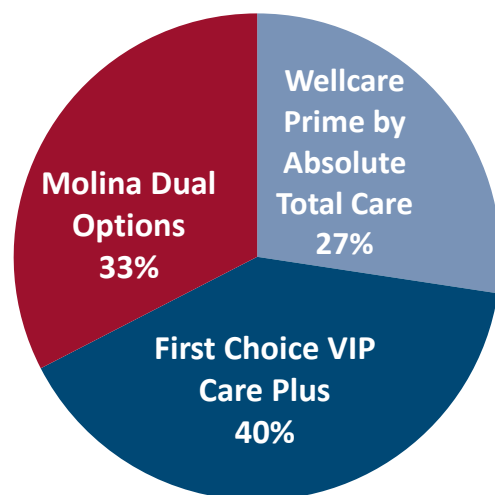
### Nursing Facilities FAQs Update

Our Nursing Facilities FAQs have recently been revised with some updated health plan contacts.

Please visit [this link](#) to access this file for useful information on topics such as contracting, checking eligibility, billing, and claims processing.

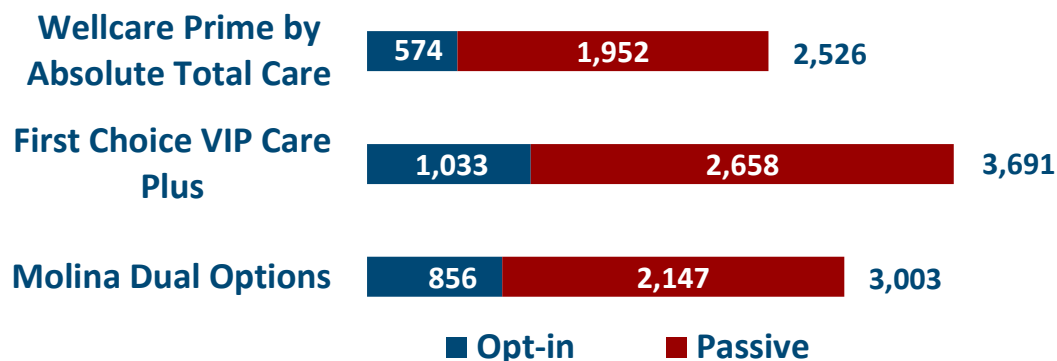
## August 2024 Active Enrollments

## Enrollment by Plan

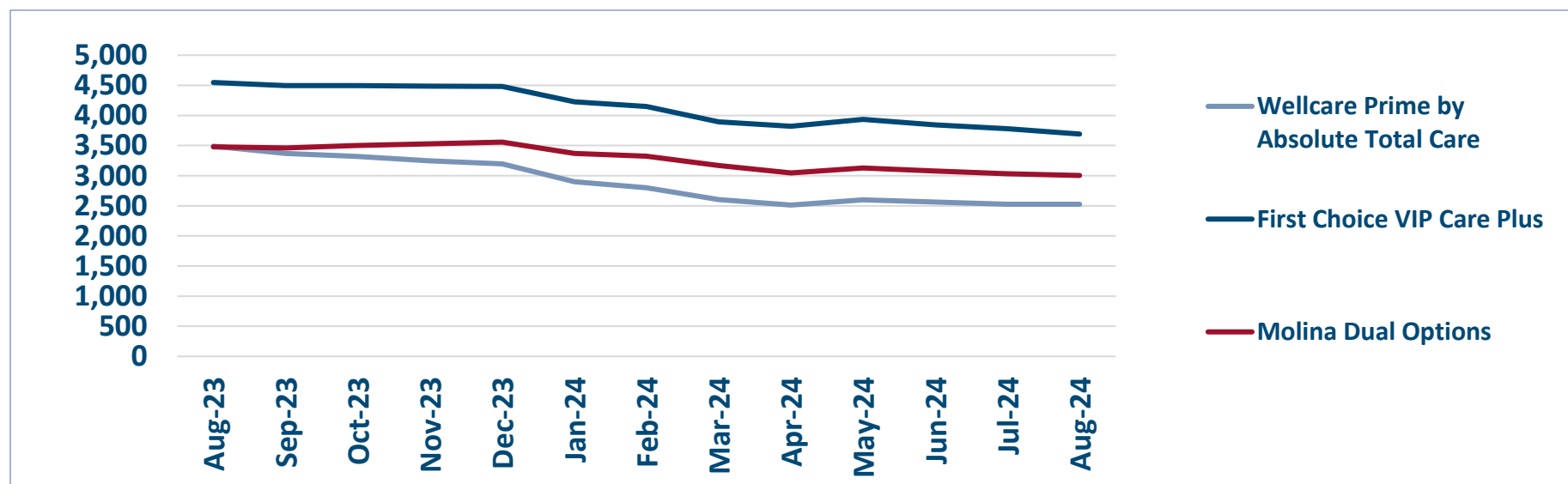


## ENROLLMENT SOURCE BY PLAN

Total: 9,220



## Monthly Enrollment By Plan

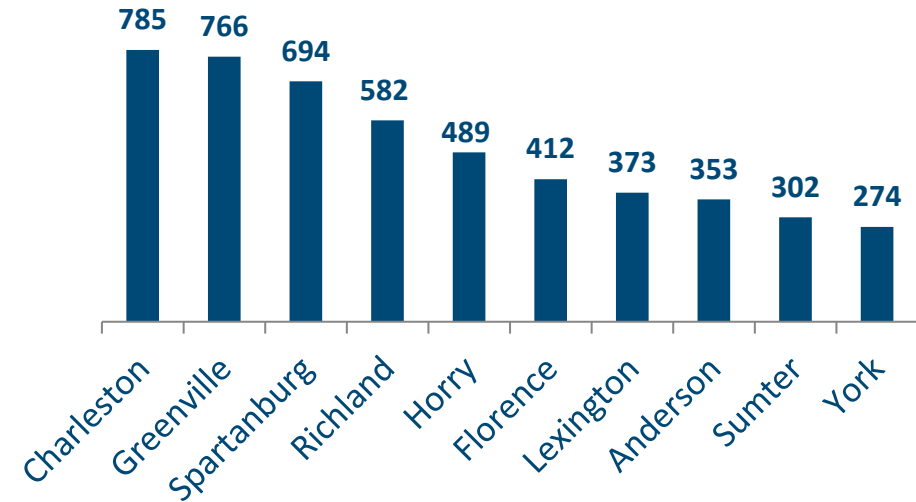


## Healthy Connections Prime Active Enrollment

Aug  
2024

County	Wellcare Prime by Absolute Total Care	First Choice VIP Care Plus	Molina Dual Options	County Total
Abbeville	7	29	17	53
Aiken	14	112	66	192
Allendale	4	13	14	31
Anderson	50	234	69	353
Bamberg	13	19	19	51
Barnwell	18	15	27	60
Beaufort	62	98	11	171
Berkeley	98	121	49	268
Calhoun	5	10	15	30
Charleston	230	289	266	785
Cherokee	12	140	28	180
Chester	21	27	32	80
Chesterfield	42	36	45	123
Clarendon	22	45	30	97
Colleton	35	36	61	132
Darlington	139		41	180
Dillon	39	37	51	127
Dorchester	21	94	37	152
Edgefield	14	18	25	57
Fairfield	19	30	22	71
Florence	124	150	138	412
Georgetown	59	76	29	164
Greenville	189	261	316	766
Greenwood	22	96	26	144
Hampton	14	25	22	61
Horry	355		134	489
Jasper	14	28	18	60
Kershaw	22	72	56	150
Lancaster	33		77	110
Laurens	32	59	39	130
Lee	21	25	31	77
Lexington	79	121	173	373
Marion	40	44	52	136
Marlboro	19	33	35	87
McCormick	5	8	12	25
Newberry	20	38	36	94
Oconee	8	120	49	177
Orangeburg	85	127	51	263
Pickens	60	92	74	226
Richland	151	200	231	582
Saluda	5	15	16	36
Spartanburg	137	355	202	694
Sumter	21	255	26	302
Union	10	49	21	80
Williamsburg	29	39	47	115
York	107		167	274
<b>Total</b>	<b>2,526</b>	<b>3,691</b>	<b>3,003</b>	<b>9,220</b>

## TOP 10 COUNTIES BY ENROLLMENT



## HEALTHY CONNECTIONS PRIME COUNTY PARTICIPATION

Healthy Connections Prime is available in every county in the state.



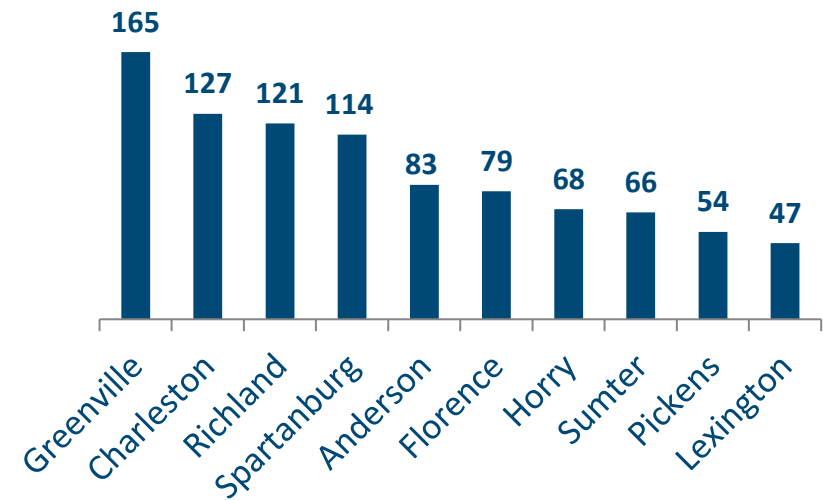
(All counties are available for passive enrollment.)

## Healthy Connections Prime HCBS Waiver Enrollment

Aug  
2024

County	Wellcare Prime by Absolute Total Care	First Choice VIP Care Plus	Molina Dual Options	County Total
Abbeville	2	9	6	17
Aiken	1	7	5	13
Allendale	2	5	3	10
Anderson	10	63	10	83
Bamberg	4	7	2	13
Barnwell	4	2	8	14
Beaufort	15	22	2	39
Berkeley	14	14	5	33
Calhoun		2	3	5
Charleston	26	57	44	127
Cherokee		20	3	23
Chester	3	3	4	10
Chesterfield	4	3	4	11
Clarendon	7	11	8	26
Colleton	7	7	7	21
Darlington	24		4	28
Dillon	7	11	5	23
Dorchester	6	10	2	18
Edgefield	3	4	3	10
Fairfield	5	3	4	12
Florence	24	31	24	79
Georgetown	10	11	1	22
Greenville	43	51	71	165
Greenwood	5	14	6	25
Hampton	3	5	8	16
Horry	52		16	68
Jasper	4	7	2	13
Kershaw	2	11	6	19
Lancaster	4		6	10
Laurens	8	10	4	22
Lee	6	8	3	17
Lexington	9	18	20	47
Marion	8	12	14	34
Marlboro	2	5	8	15
McCormick	2		4	6
Newberry	3	4	8	15
Oconee	2	24	6	32
Orangeburg	19	19	5	43
Pickens	14	22	18	54
Richland	27	51	43	121
Saluda	1		3	4
Spartanburg	25	71	18	114
Sumter	4	57	5	66
Union	1	5	4	10
Williamsburg	8	10	14	32
York	15		22	37
<b>Total</b>	<b>445</b>	<b>706</b>	<b>471</b>	<b>1,622</b>

### CURRENT TOP 10 COUNTIES BY WAIVER ENROLLMENT



### HCBS WAIVER UTILIZATION

Waiver Service	Total
Community Choices	1,601
HIV/AIDS	19
Mechanical Ventilator Dependent	1
<b>Total</b>	<b>1,621</b>

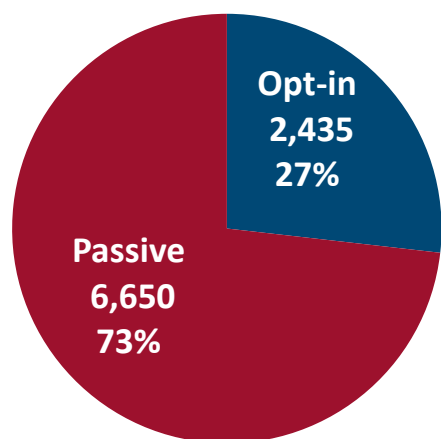
**September 2024**

## September 2024 Active Enrollments

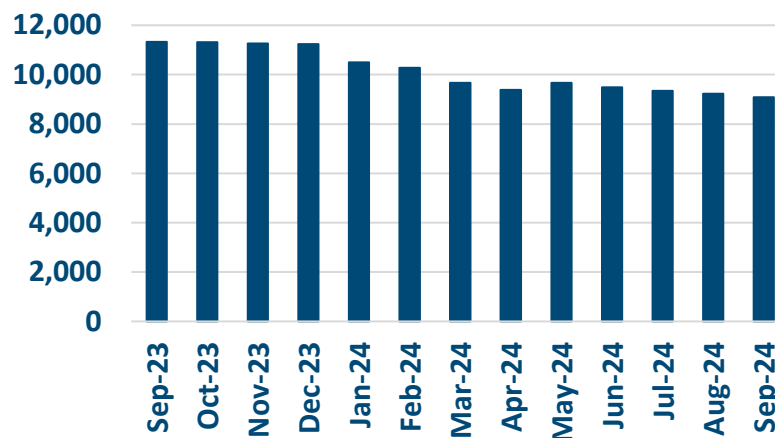


### Enrollment Breakdown by Source

#### OPT-IN VS. PASSIVE ENROLLMENTS



#### TOTAL ENROLLMENT BY MONTH



**September Active Enrollments**  
9,085

**August Active Enrollments**  
9,220

**Monthly Enrollment Change**  
-1%

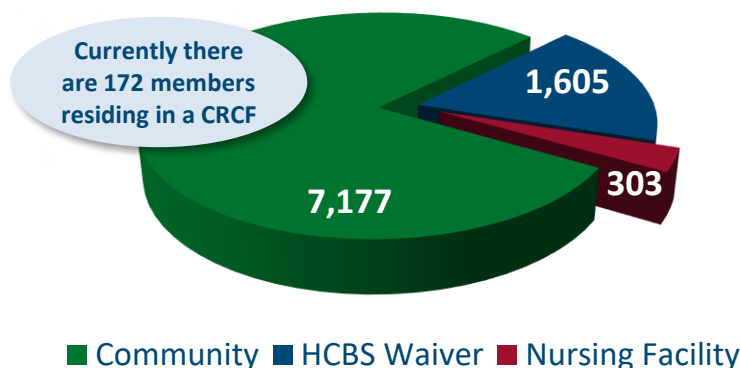
### Nursing Facility Usage and Enrollee Demographics

#### NURSING FACILITY UTILIZATION

Type of Stay	Total
Custodial	303
Non-Custodial*	222
<b>Total</b>	<b>525</b>

\* Portions of this chart are self-reported MMP data.

#### ENROLLEE POPULATION BREAKDOWN



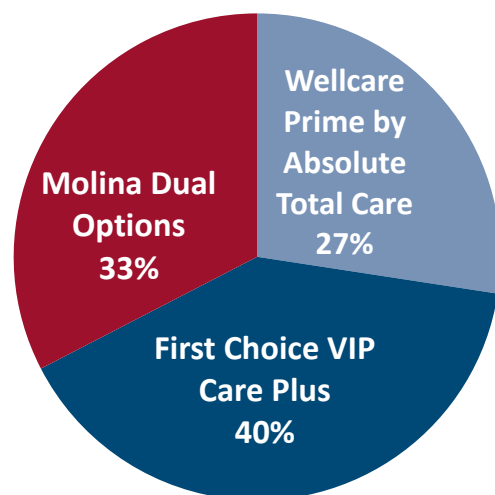
### Flu Vaccine Reminder

Flu season is here and Healthy Connections Prime would like to remind members to get the annual flu vaccine. Reducing the spread of respiratory illnesses like the flu this winter is important for protecting yourself and your loved ones.

To learn more, please visit the following page: [CDC Flu Vaccine Information](#)

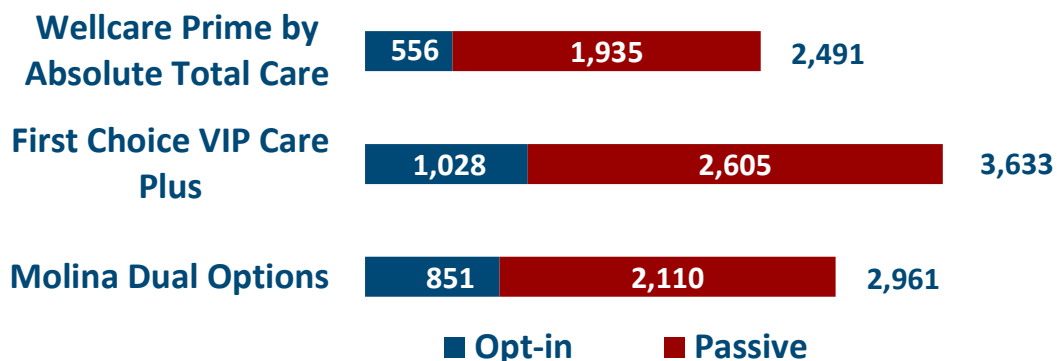
## September 2024 Active Enrollments

## Enrollment by Plan

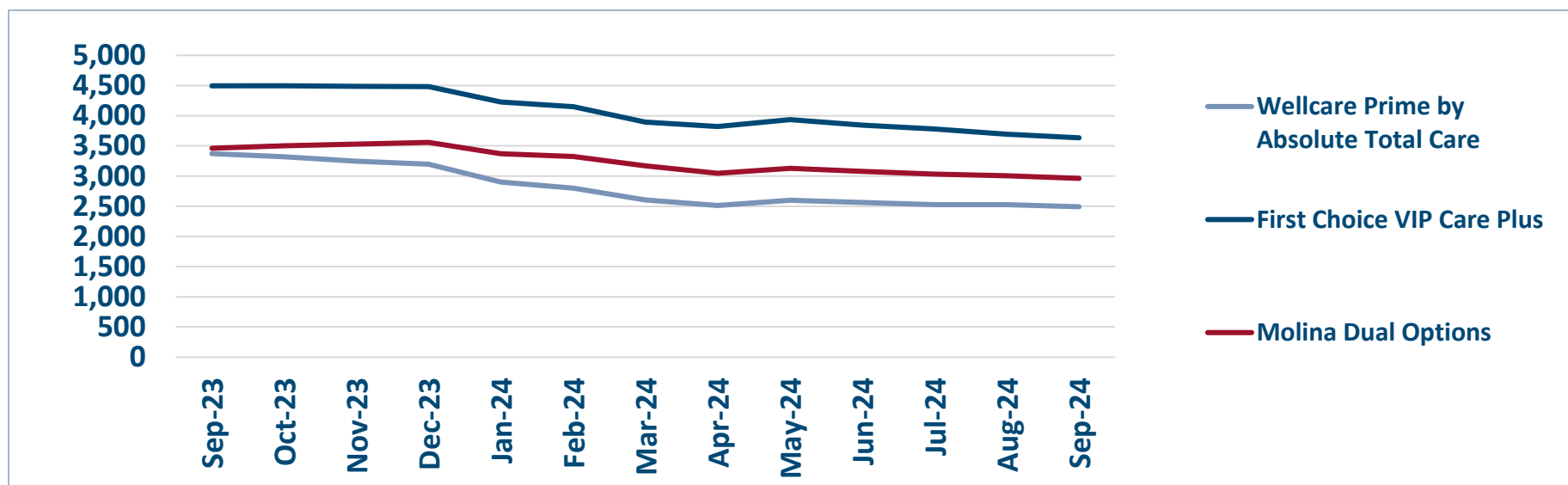


## ENROLLMENT SOURCE BY PLAN

Total: 9,085



## Monthly Enrollment By Plan

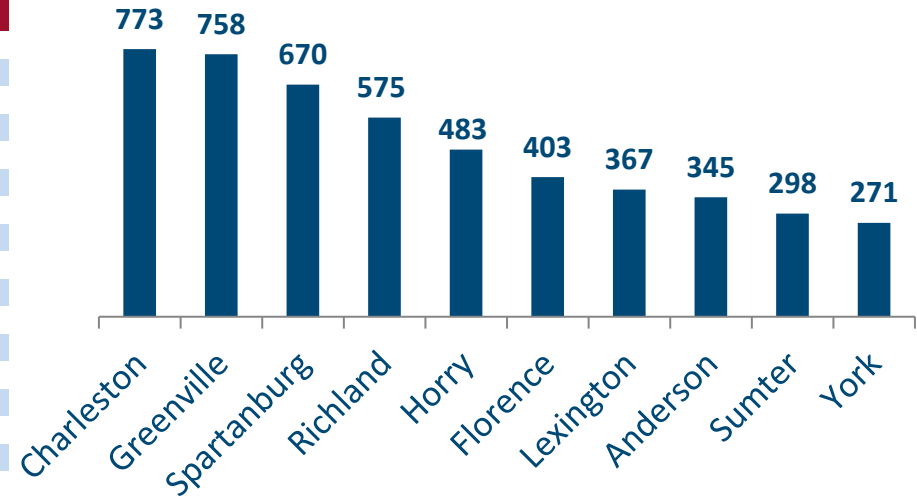


## Healthy Connections Prime Active Enrollment

 Sep  
2024

County	Wellcare Prime by Absolute Total Care	First Choice VIP Care Plus	Molina Dual Options	County Total
Abbeville	8	28	17	53
Aiken	12	111	65	188
Allendale	5	13	14	32
Anderson	49	229	67	345
Bamberg	14	19	19	52
Barnwell	18	15	28	61
Beaufort	61	95	10	166
Berkeley	95	119	48	262
Calhoun	5	10	15	30
Charleston	223	287	263	773
Cherokee	12	141	27	180
Chester	19	26	32	77
Chesterfield	41	37	44	122
Clarendon	22	47	29	98
Colleton	38	34	61	133
Darlington	136	0	44	180
Dillon	38	34	49	121
Dorchester	21	97	33	151
Edgefield	14	18	24	56
Fairfield	19	31	21	71
Florence	120	150	133	403
Georgetown	59	75	30	164
Greenville	188	260	310	758
Greenwood	23	97	26	146
Hampton	15	25	22	62
Horry	353	0	130	483
Jasper	15	26	18	59
Kershaw	22	70	55	147
Lancaster	32	0	77	109
Laurens	34	57	42	133
Lee	20	25	31	76
Lexington	77	116	174	367
Marion	40	43	53	136
Marlboro	18	31	36	85
McCormick	5	8	11	24
Newberry	18	38	36	92
Oconee	7	115	48	170
Orangeburg	86	124	53	263
Pickens	58	89	69	216
Richland	151	195	229	575
Saluda	5	15	16	36
Spartanburg	130	347	193	670
Sumter	22	249	27	298
Union	10	49	19	78
Williamsburg	28	38	47	113
York	105	0	166	271
<b>Total</b>	<b>2,491</b>	<b>3,633</b>	<b>2,961</b>	<b>9,085</b>

### TOP 10 COUNTIES BY ENROLLMENT



### HEALTHY CONNECTIONS PRIME COUNTY PARTICIPATION

Healthy Connections Prime is available in every county in the state.



(All counties are available for passive enrollment.)

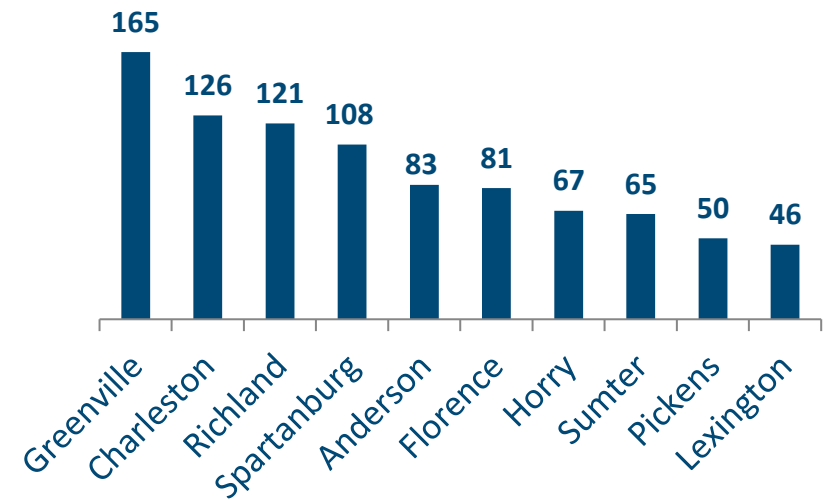


## Healthy Connections Prime HCBS Waiver Enrollment

 Sep  
2024

County	Wellcare Prime by Absolute Total Care	First Choice VIP Care Plus	Molina Dual Options	County Total
Abbeville	2	9	6	17
Aiken	1	7	5	13
Allendale	2	5	3	10
Anderson	9	64	10	83
Bamberg	5	7	2	14
Barnwell	4	2	9	15
Beaufort	15	21	2	38
Berkeley	14	14	5	33
Calhoun	0	2	3	5
Charleston	26	57	43	126
Cherokee	0	21	2	23
Chester	2	3	4	9
Chesterfield	4	3	4	11
Clarendon	6	12	7	25
Colleton	7	6	8	21
Darlington	24	0	4	28
Dillon	7	9	5	21
Dorchester	6	11	1	18
Edgefield	3	4	2	9
Fairfield	6	3	4	13
Florence	25	32	24	81
Georgetown	10	11	1	22
Greenville	43	51	71	165
Greenwood	5	14	6	25
Hampton	4	5	8	17
Horry	51	0	16	67
Jasper	4	7	2	13
Kershaw	2	11	6	19
Lancaster	4	0	6	10
Laurens	9	10	4	23
Lee	7	8	3	18
Lexington	9	18	19	46
Marion	8	12	14	34
Marlboro	3	4	8	15
McCormick	2	0	3	5
Newberry	3	4	8	15
Oconee	1	24	6	31
Orangeburg	19	17	5	41
Pickens	13	20	17	50
Richland	27	50	44	121
Saluda	1	0	3	4
Spartanburg	22	69	17	108
Sumter	4	56	5	65
Union	1	5	4	10
Williamsburg	8	10	14	32
York	14	0	22	36
<b>Total</b>	<b>442</b>	<b>698</b>	<b>465</b>	<b>1,605</b>

### CURRENT TOP 10 COUNTIES BY WAIVER ENROLLMENT



### HCBS WAIVER UTILIZATION

Waiver Service	Total
Community Choices	1,584
HIV/AIDS	19
Mechanical Ventilator Dependent	2
<b>Total</b>	<b>1,605</b>

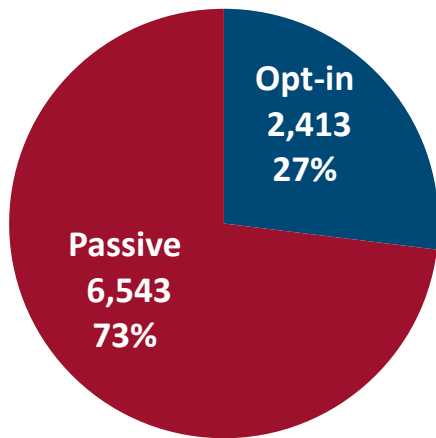
**October 2024**

## October 2024 Active Enrollments

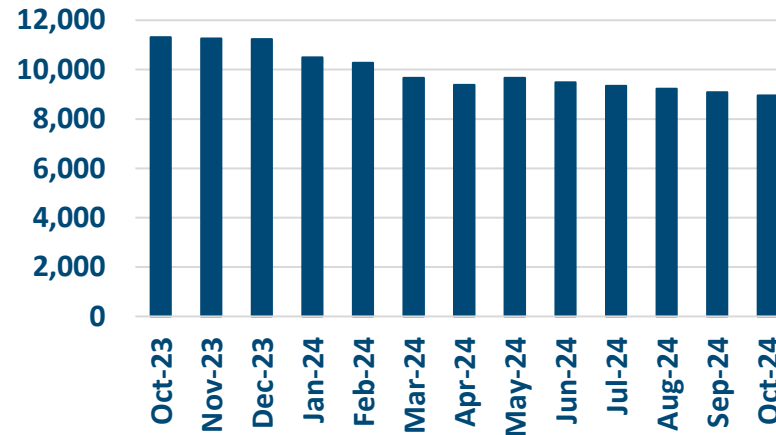


### Enrollment Breakdown by Source

#### OPT-IN VS. PASSIVE ENROLLMENTS



#### TOTAL ENROLLMENT BY MONTH



October Active  
Enrollments  
8,956

September Active  
Enrollments  
9,085

Monthly  
Enrollment Change  
-1%

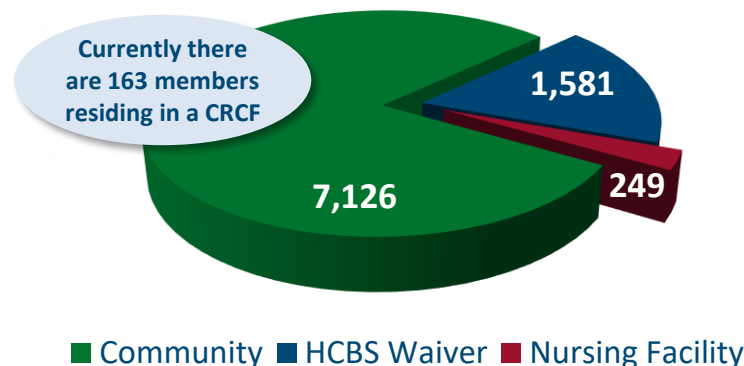
### Nursing Facility Usage and Enrollee Demographics

#### NURSING FACILITY UTILIZATION

Type of Stay	Total
Custodial	249
Non-Custodial*	205
<b>Total</b>	<b>454</b>

\* Portions of this chart are self-reported MMP data.

#### ENROLLEE POPULATION BREAKDOWN



■ Community ■ HCBS Waiver ■ Nursing Facility

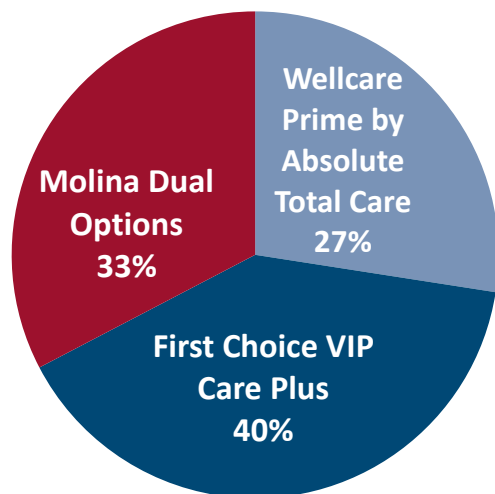
#### Links to MMPs



# October 2024 Active Enrollments

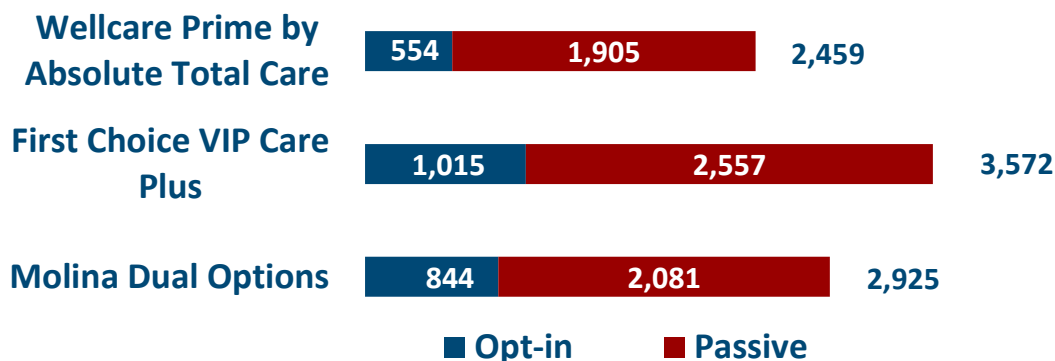


## Enrollment by Plan

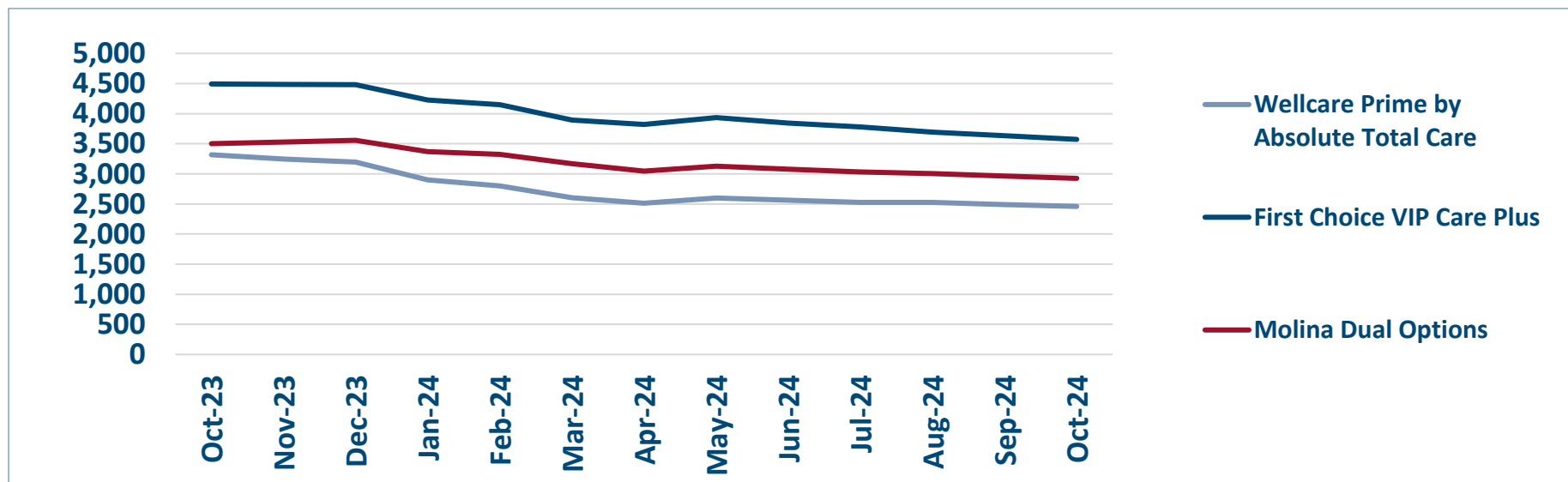


## ENROLLMENT SOURCE BY PLAN

Total: 8,956



## Monthly Enrollment By Plan

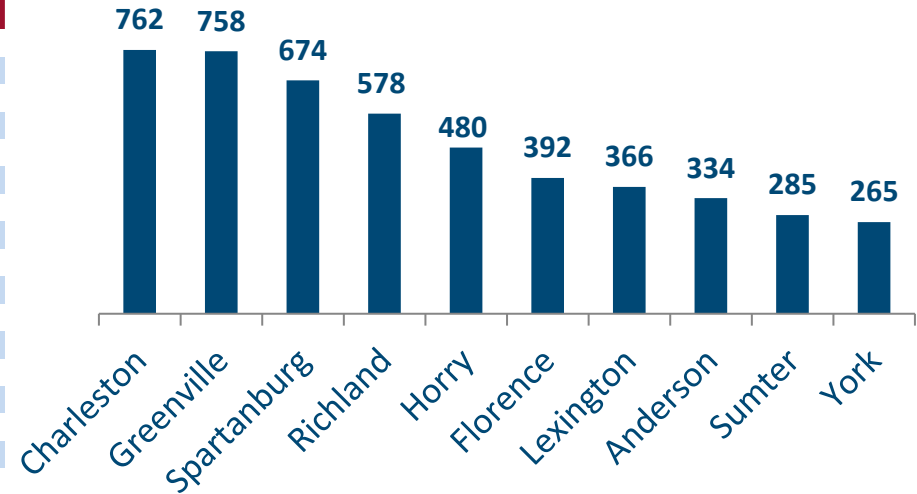


## Healthy Connections Prime Active Enrollment

Oct 2024

County	Wellcare Prime by Absolute Total Care	First Choice VIP Care Plus	Molina Dual Options	County Total
Abbeville	7	27	17	51
Aiken	8	108	67	183
Allendale	4	13	14	31
Anderson	46	224	64	334
Bamberg	15	19	19	53
Barnwell	18	16	28	62
Beaufort	58	96	11	165
Berkeley	95	120	46	261
Calhoun	6	10	15	31
Charleston	219	282	261	762
Cherokee	13	140	26	179
Chester	19	24	32	75
Chesterfield	42	36	44	122
Clarendon	22	46	29	97
Colleton	39	32	60	131
Darlington	120	0	45	165
Dillon	34	34	48	116
Dorchester	23	97	31	151
Edgefield	14	18	24	56
Fairfield	19	29	22	70
Florence	119	143	130	392
Georgetown	58	72	31	161
Greenville	188	253	317	758
Greenwood	24	96	25	145
Hampton	15	25	20	60
Horry	350	0	130	480
Jasper	15	26	18	59
Kershaw	22	69	55	146
Lancaster	31	0	72	103
Laurens	34	56	38	128
Lee	17	24	30	71
Lexington	77	118	171	366
Marion	35	44	52	131
Marlboro	18	31	37	86
McCormick	4	8	11	23
Newberry	18	37	34	89
Oconee	8	112	48	168
Orangeburg	83	124	51	258
Pickens	58	83	67	208
Richland	155	194	229	578
Saluda	5	15	17	37
Spartanburg	138	346	190	674
Sumter	21	238	26	285
Union	10	48	19	77
Williamsburg	29	39	45	113
York	106	0	159	265
<b>Total</b>	<b>2,459</b>	<b>3,572</b>	<b>2,925</b>	<b>8,956</b>

### TOP 10 COUNTIES BY ENROLLMENT



### HEALTHY CONNECTIONS PRIME COUNTY PARTICIPATION

Healthy Connections Prime is available in every county in the state.



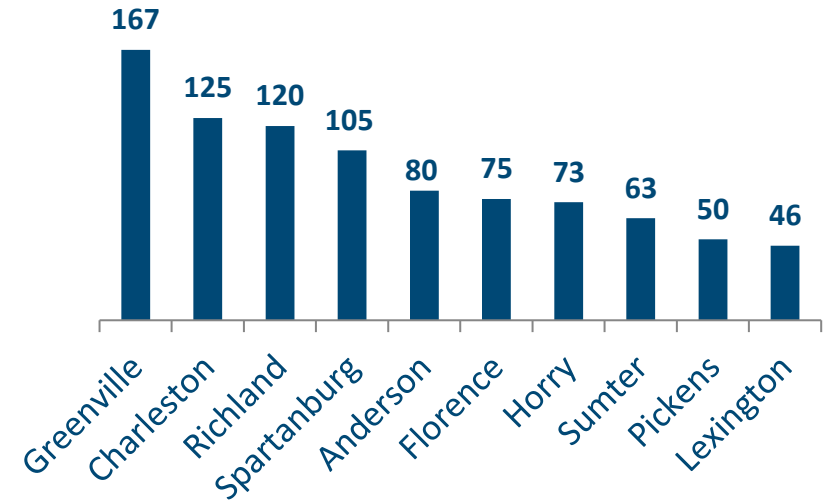
(All counties are available for passive enrollment.)

## Healthy Connections Prime HCBS Waiver Enrollment

Oct  
2024

County	Wellcare Prime by Absolute Total Care	First Choice VIP Care Plus	Molina Dual Options	County Total
Abbeville	2	9	6	17
Aiken	0	7	5	12
Allendale	2	5	3	10
Anderson	10	60	10	80
Bamberg	5	7	2	14
Barnwell	4	3	9	16
Beaufort	15	21	3	39
Berkeley	12	13	5	30
Calhoun	0	2	3	5
Charleston	30	53	42	125
Cherokee	1	21	2	24
Chester	2	2	5	9
Chesterfield	4	3	3	10
Clarendon	6	13	7	26
Colleton	8	6	7	21
Darlington	23	0	4	27
Dillon	5	8	6	19
Dorchester	6	12	2	20
Edgefield	3	4	2	9
Fairfield	7	3	4	14
Florence	24	27	24	75
Georgetown	9	10	2	21
Greenville	43	51	73	167
Greenwood	4	13	5	22
Hampton	4	5	6	15
Horry	56	0	17	73
Jasper	6	7	2	15
Kershaw	2	11	8	21
Lancaster	4	0	6	10
Laurens	9	8	4	21
Lee	5	7	3	15
Lexington	9	19	18	46
Marion	7	12	13	32
Marlboro	3	3	8	14
McCormick	3	0	3	6
Newberry	3	5	9	17
Oconee	1	21	4	26
Orangeburg	16	16	5	37
Pickens	13	20	17	50
Richland	26	51	43	120
Saluda	1	0	3	4
Spartanburg	22	67	16	105
Sumter	4	55	4	63
Union	1	6	4	11
Williamsburg	9	11	14	34
York	14	0	20	34
<b>Total</b>	<b>443</b>	<b>677</b>	<b>461</b>	<b>1,581</b>

### CURRENT TOP 10 COUNTIES BY WAIVER ENROLLMENT



### HCBS WAIVER UTILIZATION

Waiver Service	Total
Community Choices	1,558
HIV/AIDS	19
Mechanical Ventilator Dependent	4
<b>Total</b>	<b>1,581</b>

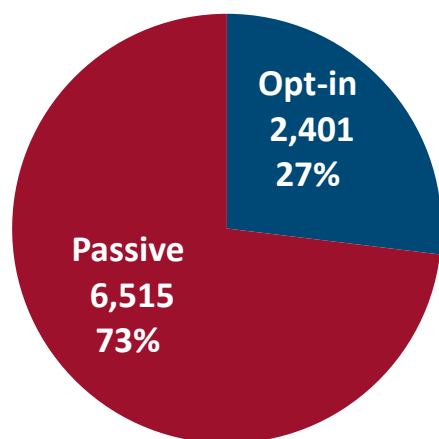
**November 2024**

## November 2024 Active Enrollments

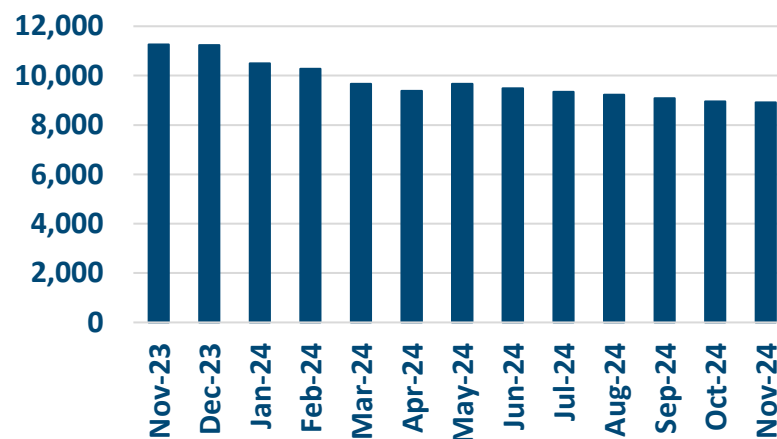


## Enrollment Breakdown by Source

## OPT-IN VS. PASSIVE ENROLLMENTS



## TOTAL ENROLLMENT BY MONTH



November Active Enrollments  
8,916

October Active Enrollments  
8,956

Monthly Enrollment Change  
-0%

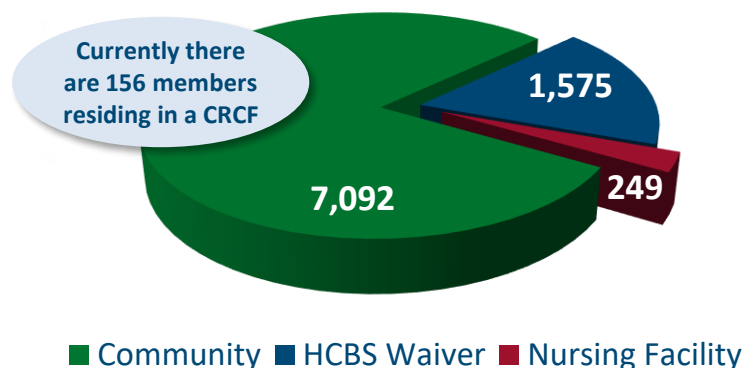
## Nursing Facility Usage and Enrollee Demographics

## NURSING FACILITY UTILIZATION

Type of Stay	Total
Custodial	249
Non-Custodial*	216
<b>Total</b>	<b>465</b>

\* Portions of this chart are self-reported MMP data.

## ENROLLEE POPULATION BREAKDOWN



■ Community ■ HCBS Waiver ■ Nursing Facility

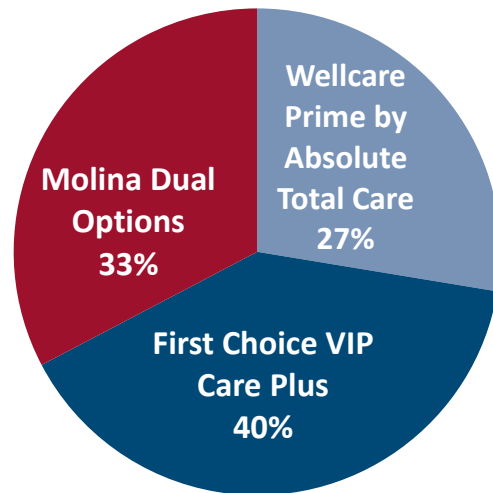
## Links to MMPs





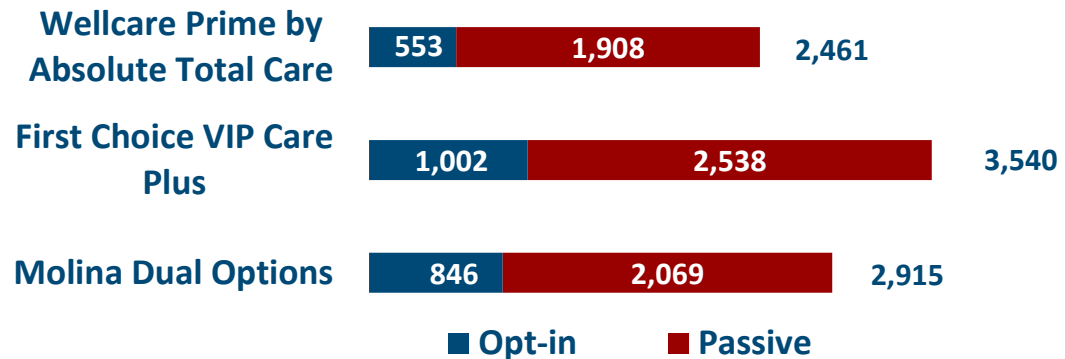
## November 2024 Active Enrollments

## Enrollment by Plan

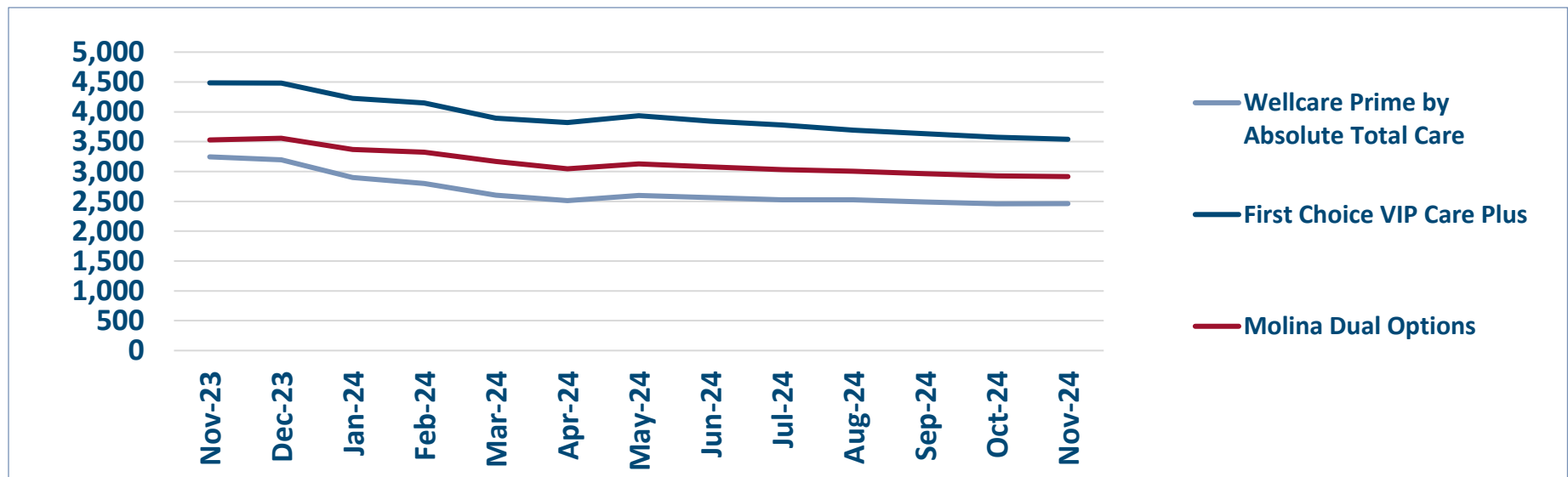


## ENROLLMENT SOURCE BY PLAN

Total: 8,916



## Monthly Enrollment By Plan

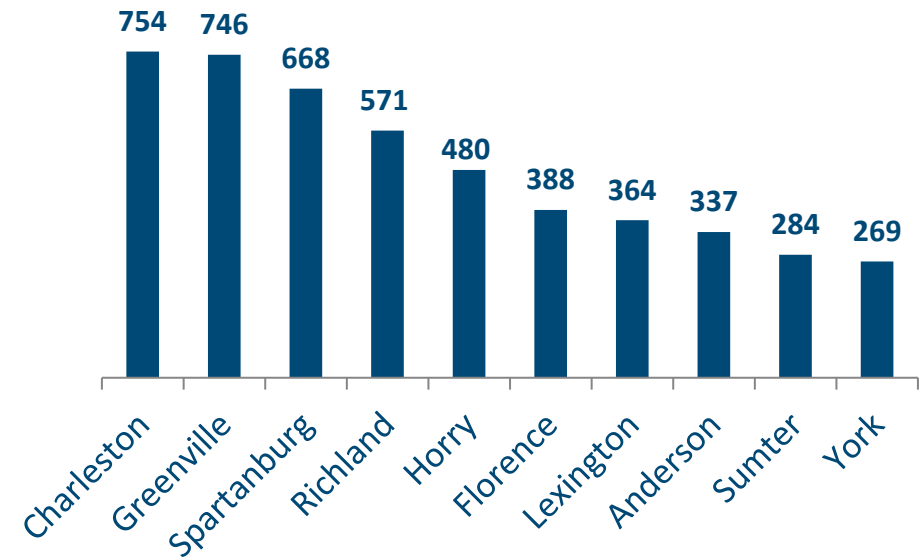


## Healthy Connections Prime Active Enrollment

Nov  
2024

County	Wellcare Prime by Absolute Total Care	First Choice VIP Care Plus	Molina Dual Options	County Total
Abbeville	7	27	16	50
Aiken	9	105	65	179
Allendale	5	13	13	31
Anderson	45	225	67	337
Bamberg	15	19	19	53
Barnwell	17	15	28	60
Beaufort	59	96	11	166
Berkeley	94	119	46	259
Calhoun	6	10	15	31
Charleston	220	279	255	754
Cherokee	14	138	26	178
Chester	19	24	33	76
Chesterfield	42	36	43	121
Clarendon	23	46	30	99
Colleton	37	33	61	131
Darlington	130	0	45	175
Dillon	36	32	47	115
Dorchester	23	96	32	151
Edgefield	14	16	23	53
Fairfield	20	29	22	71
Florence	116	144	128	388
Georgetown	57	72	31	160
Greenville	187	252	307	746
Greenwood	24	93	23	140
Hampton	15	25	20	60
Horry	348	1	131	480
Jasper	15	23	19	57
Kershaw	21	70	55	146
Lancaster	31	0	75	106
Laurens	34	54	39	127
Lee	17	26	30	73
Lexington	77	117	170	364
Marion	36	43	52	131
Marlboro	18	31	38	87
McCormick	4	8	11	23
Newberry	18	37	34	89
Oconee	9	109	47	165
Orangeburg	82	121	51	254
Pickens	60	84	67	211
Richland	150	193	228	571
Saluda	5	15	16	36
Spartanburg	133	341	194	668
Sumter	23	236	25	284
Union	10	46	19	75
Williamsburg	29	41	46	116
York	107	0	162	269
<b>Total</b>	<b>2,461</b>	<b>3,540</b>	<b>2,915</b>	<b>8,916</b>

### TOP 10 COUNTIES BY ENROLLMENT



### HEALTHY CONNECTIONS PRIME COUNTY PARTICIPATION

Healthy Connections Prime is available in every county in the state.



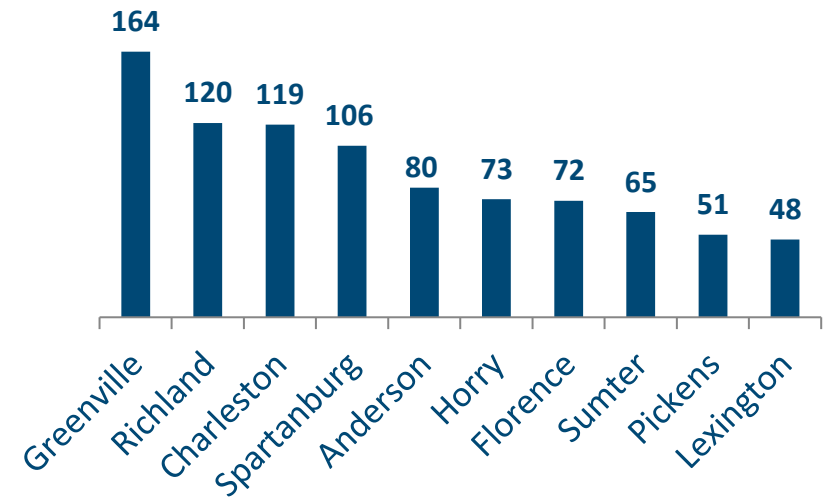
(All counties are available for passive enrollment.)

## Healthy Connections Prime HCBS Waiver Enrollment

Nov  
2024

County	Wellcare Prime by Absolute Total Care	First Choice VIP Care Plus	Molina Dual Options	County Total
Abbeville	2	9	5	16
Aiken	0	7	4	11
Allendale	2	5	3	10
Anderson	8	60	12	80
Bamberg	5	7	2	14
Barnwell	5	2	9	16
Beaufort	15	21	3	39
Berkeley	12	13	5	30
Calhoun	0	2	3	5
Charleston	30	50	39	119
Cherokee	2	22	2	26
Chester	2	2	5	9
Chesterfield	4	3	3	10
Clarendon	6	13	7	26
Colleton	8	6	7	21
Darlington	26	0	4	30
Dillon	6	7	6	19
Dorchester	5	13	3	21
Edgefield	3	4	2	9
Fairfield	7	3	4	14
Florence	23	27	22	72
Georgetown	9	10	2	21
Greenville	43	52	69	164
Greenwood	4	11	5	20
Hampton	4	5	6	15
Horry	55	0	18	73
Jasper	6	6	2	14
Kershaw	2	12	8	22
Lancaster	4	0	4	8
Laurens	9	7	4	20
Lee	5	8	3	16
Lexington	9	20	19	48
Marion	7	12	13	32
Marlboro	3	3	8	14
McCormick	3	0	3	6
Newberry	3	5	9	17
Oconee	1	21	5	27
Orangeburg	16	16	5	37
Pickens	14	20	17	51
Richland	26	51	43	120
Saluda	1	0	3	4
Spartanburg	21	68	17	106
Sumter	6	54	5	65
Union	1	5	4	10
Williamsburg	9	12	14	35
York	14	0	19	33
<b>Total</b>	<b>446</b>	<b>674</b>	<b>455</b>	<b>1,575</b>

### CURRENT TOP 10 COUNTIES BY WAIVER ENROLLMENT



### HCBS WAIVER UTILIZATION

Waiver Service	Total
Community Choices	1,552
HIV/AIDS	19
Mechanical Ventilator Dependent	4
<b>Total</b>	<b>1,575</b>

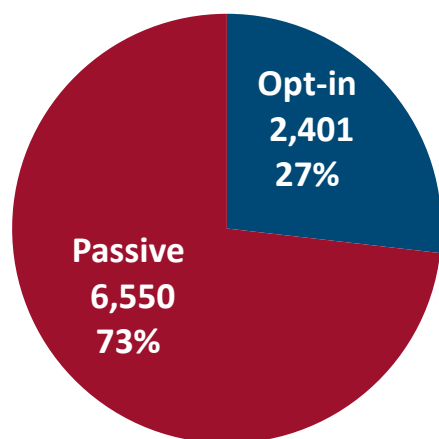
**December 2024**

## December 2024 Active Enrollments

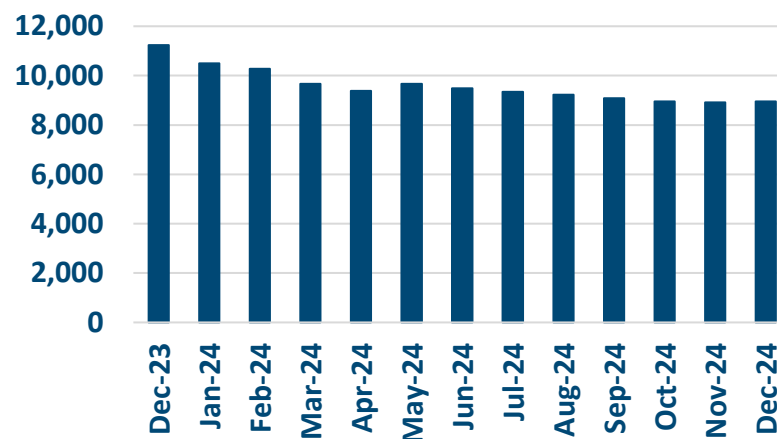


## Enrollment Breakdown by Source

## OPT-IN VS. PASSIVE ENROLLMENTS



## TOTAL ENROLLMENT BY MONTH



December Active Enrollments  
8,951

November Active Enrollments  
8,916

Monthly Enrollment Change  
-0%

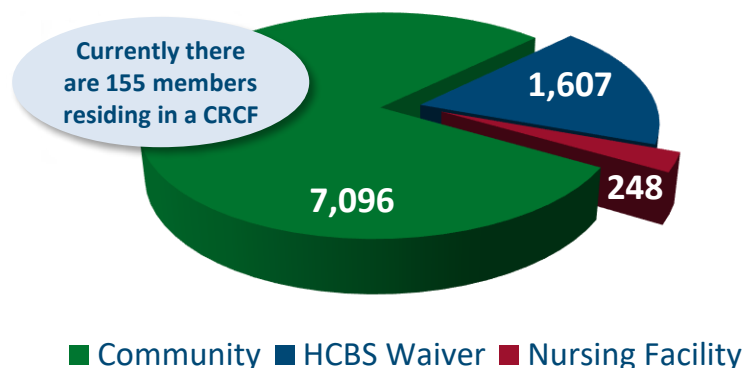
## Nursing Facility Usage and Enrollee Demographics

## NURSING FACILITY UTILIZATION

Type of Stay	Total
Custodial	248
Non-Custodial*	213
<b>Total</b>	<b>461</b>

\* Portions of this chart are self-reported MMP data.

## ENROLLEE POPULATION BREAKDOWN



■ Community ■ HCBS Waiver ■ Nursing Facility

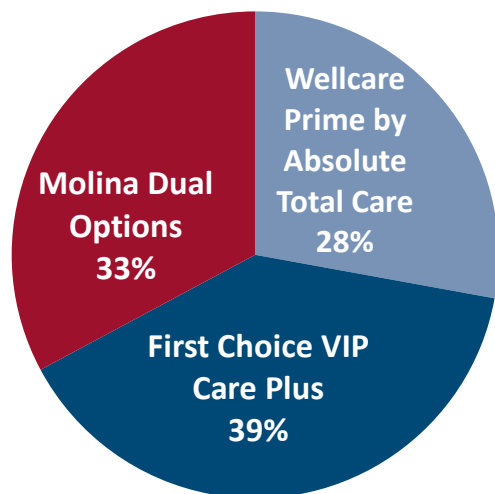
## Links to MMPs



# December 2024 Active Enrollments

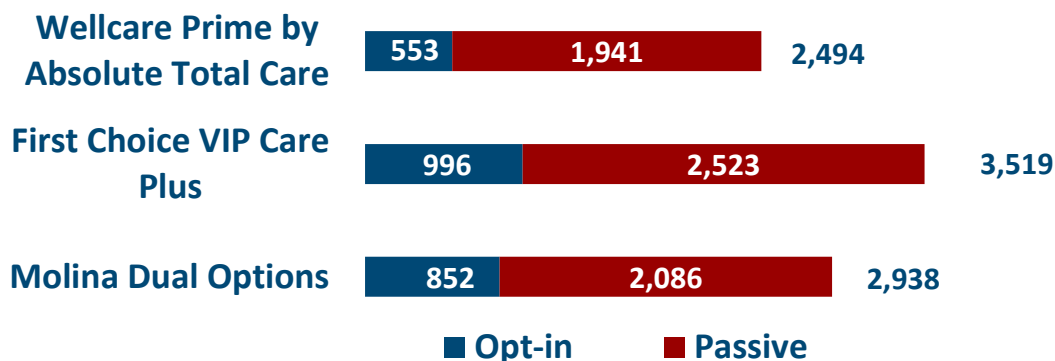


## Enrollment by Plan

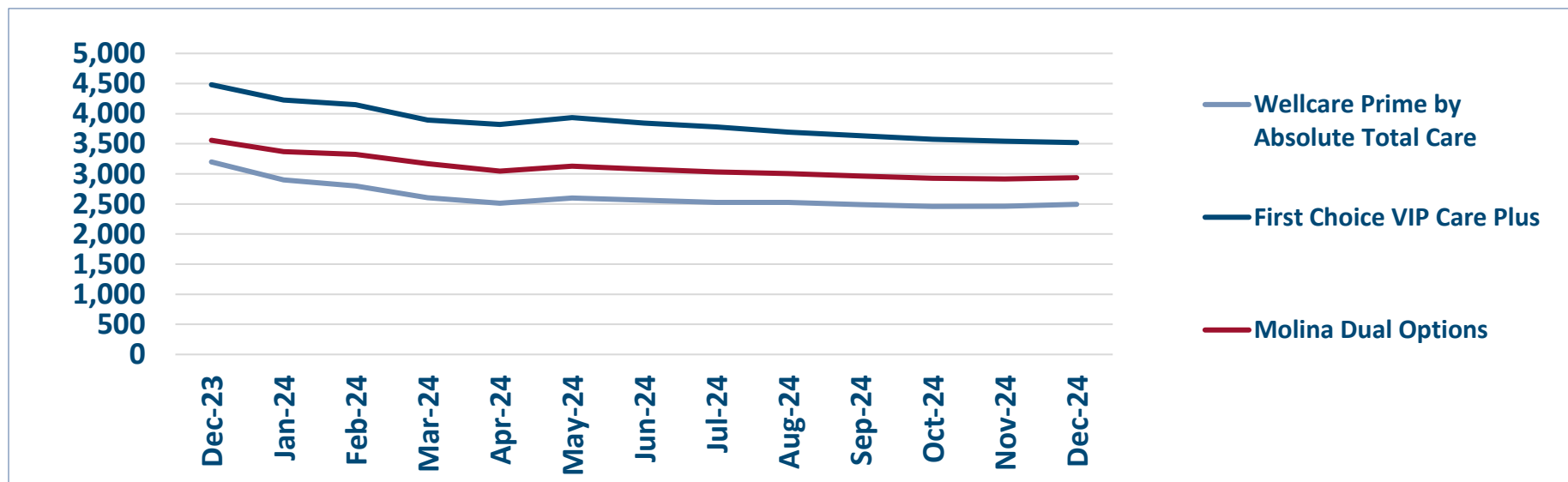


## ENROLLMENT SOURCE BY PLAN

Total: 8,951



## Monthly Enrollment By Plan

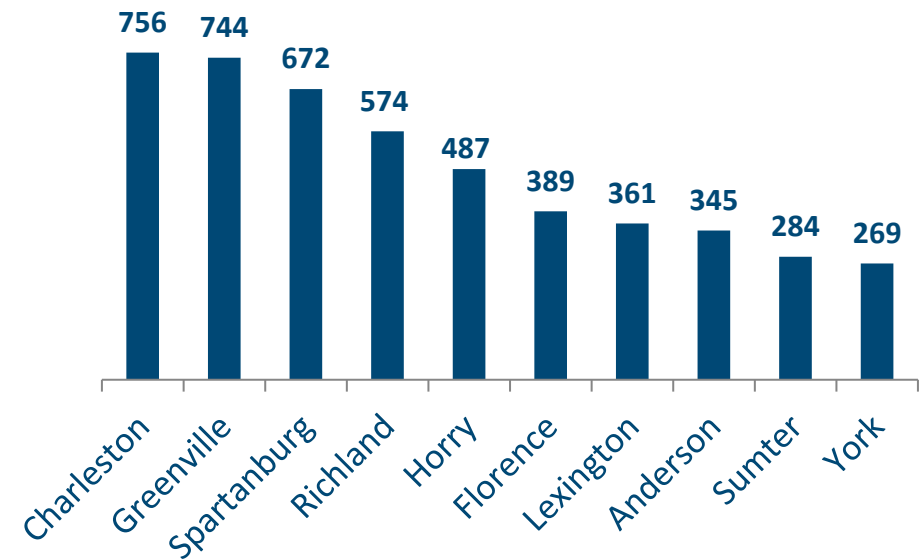


## Healthy Connections Prime Active Enrollment

Dec 2024

County	Wellcare Prime by Absolute Total Care	First Choice VIP Care Plus	Molina Dual Options	County Total
Abbeville	8	26	16	50
Aiken	10	103	65	178
Allendale	5	13	13	31
Anderson	49	227	69	345
Bamberg	15	19	20	54
Barnwell	17	15	29	61
Beaufort	60	97	14	171
Berkeley	94	117	45	256
Calhoun	6	11	14	31
Charleston	226	270	260	756
Cherokee	15	137	27	179
Chester	19	23	35	77
Chesterfield	43	34	41	118
Clarendon	24	46	29	99
Colleton	37	30	59	126
Darlington	129	0	46	175
Dillon	37	34	48	119
Dorchester	24	97	37	158
Edgefield	14	18	23	55
Fairfield	20	29	22	71
Florence	119	141	129	389
Georgetown	55	71	31	157
Greenville	187	250	307	744
Greenwood	24	93	25	142
Hampton	15	23	20	58
Horry	351	1	135	487
Jasper	16	23	19	58
Kershaw	24	68	55	147
Lancaster	34	0	77	111
Laurens	32	55	38	125
Lee	18	27	29	74
Lexington	79	115	167	361
Marion	36	39	53	128
Marlboro	20	30	39	89
McCormick	4	8	11	23
Newberry	18	38	34	90
Oconee	10	108	46	164
Orangeburg	79	122	51	252
Pickens	62	84	68	214
Richland	152	195	227	574
Saluda	5	15	16	36
Spartanburg	133	344	195	672
Sumter	22	236	26	284
Union	11	45	20	76
Williamsburg	29	42	46	117
York	107	0	162	269
<b>Total</b>	<b>2,494</b>	<b>3,519</b>	<b>2,938</b>	<b>8,951</b>

### TOP 10 COUNTIES BY ENROLLMENT



### HEALTHY CONNECTIONS PRIME COUNTY PARTICIPATION

Healthy Connections Prime is available in every county in the state.



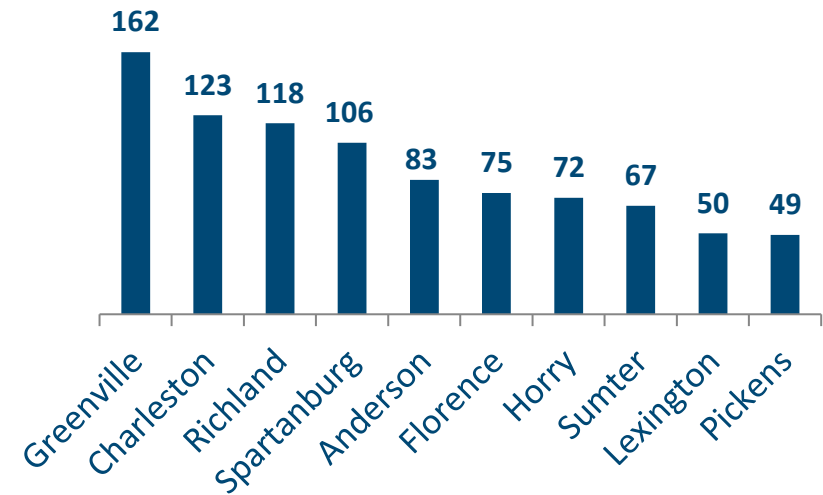
(All counties are available for passive enrollment.)

## Healthy Connections Prime HCBS Waiver Enrollment

Dec  
2024

County	Wellcare Prime by Absolute Total Care	First Choice VIP Care Plus	Molina Dual Options	County Total
Abbeville	3	8	5	16
Aiken	1	8	4	13
Allendale	2	4	3	9
Anderson	9	62	12	83
Bamberg	6	7	2	15
Barnwell	4	2	8	14
Beaufort	15	22	3	40
Berkeley	12	12	6	30
Calhoun	1	2	3	6
Charleston	33	49	41	123
Cherokee	3	25	2	30
Chester	2	2	5	9
Chesterfield	4	2	3	9
Clarendon	6	13	7	26
Colleton	8	6	7	21
Darlington	26	0	5	31
Dillon	6	7	7	20
Dorchester	5	14	3	22
Edgefield	3	3	2	8
Fairfield	7	3	5	15
Florence	25	27	23	75
Georgetown	10	11	2	23
Greenville	42	50	70	162
Greenwood	4	12	5	21
Hampton	4	5	6	15
Horry	55	0	17	72
Jasper	6	6	2	14
Kershaw	2	11	8	21
Lancaster	4	0	5	9
Laurens	8	9	4	21
Lee	5	9	3	17
Lexington	12	19	19	50
Marion	7	11	14	32
Marlboro	3	3	8	14
McCormick	3	0	3	6
Newberry	3	5	9	17
Oconee	2	23	5	30
Orangeburg	17	19	6	42
Pickens	13	19	17	49
Richland	25	49	44	118
Saluda	1	0	3	4
Spartanburg	20	67	19	106
Sumter	6	54	7	67
Union	2	5	4	11
Williamsburg	9	13	15	37
York	14	0	20	34
<b>Total</b>	<b>458</b>	<b>678</b>	<b>471</b>	<b>1,607</b>

## CURRENT TOP 10 COUNTIES BY WAIVER ENROLLMENT



## HCBS WAIVER UTILIZATION

Waiver Service	Total
Community Choices	1,585
HIV/AIDS	18
Mechanical Ventilator Dependent	4
<b>Total</b>	<b>1,607</b>