


## QIDA data: Summer 2017



### QIDA: Quality Improvement Data Aggregator

- What we measure is what practices will work on
- Need to focus on
  - Issues where pediatricians and their offices have room for improvement
  - Issues that can be measured easily
  - Issues that are important to children

### Outcomes: Proactive Pediatric Ambulatory Care Quality Vision

**ACCESS:** Family able to identify a Primary Care Provider; Is there a role for our partners to help us measure access?

**SCHOOL READINESS:** Are ready for school upon entry to kindergarten. What are the intermediate steps we can measure? Reach Out and Read? Positive Parenting Trainings? Referrals to other services?

**DEVELOPMENTAL SCREENING:** Screened for developmental delays\*, screening for autism, screening for social-environmental factors impacting health, screening for strengths\*

**ORAL HEALTH:** United to a dental home and receiving basic oral health services \*

**WELL CHILD CARE:** Up to date in receiving quality pediatric well child care and immunizations, consent appropriate to needs of our patients (breastfeeding, smoke exposure)\*


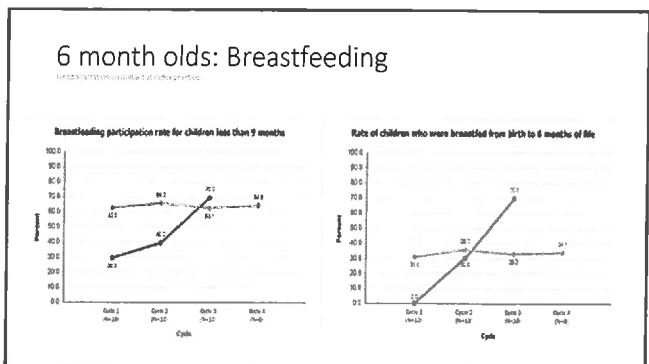
**OBESITY:** Preventive guidance given, pt. screened, evaluated and if indicated treated for obesity\*

**MENTAL HEALTH:** Screened for mental health conditions including substance abuse, domestic violence and family mental illness\*

**MENTAL HEALTH:** Receive mental health services when indicated; involved in preventive services when present

**SPECIAL HEALTH CARE NEEDS:** With Special Health Care Needs will have their care coordinated\*

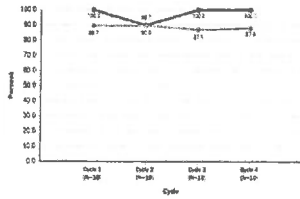
**ASTHMA:** Children with Asthma will be managed effectively and control maximized\*

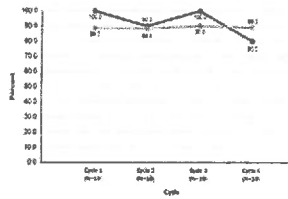
### 6 month olds: Well visit and immunizations

see reach book for specific dates

Well Child Visit Rate for Children Less Than 9 Months of age



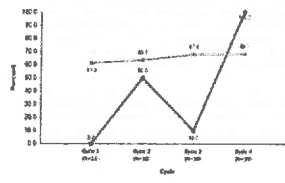
Vaccination completion rate for children less than 9 months



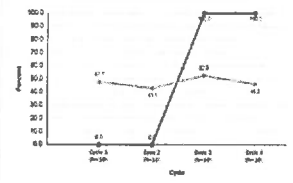
### 6 month olds: Post partum and environ. screening

see reach book

Rate of mothers who have been screened for post partum depression in the first 3 months after the child's birth.



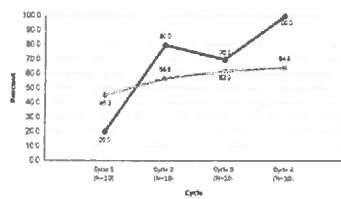
Rate of children who have been screened for at least 1 socio-environmental risk screen in the first 9 months.



### 6 month olds: Reach Out and Read

see reach book

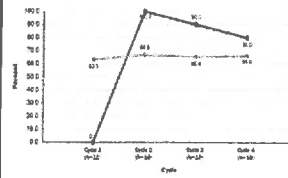
Rate of patients who's family reads to them, sings songs, or were given a reach out and read book at last visit.



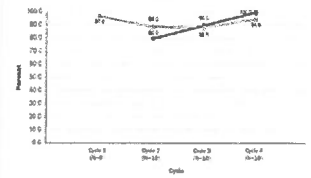
### 2 yr olds: Dev. And Autism Screening

see reach book for specific dates

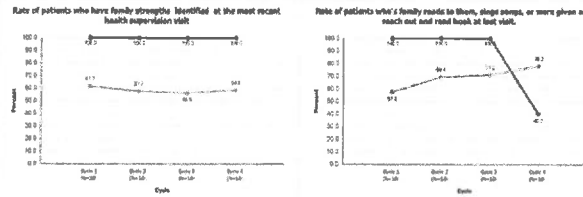
Rate of performance of at least 2 global developmental screening within past 24 months.



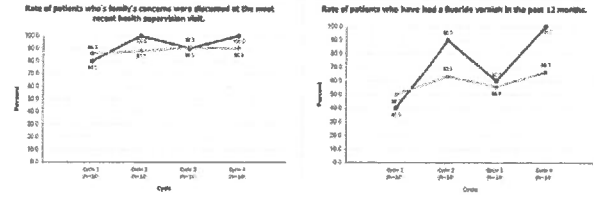
Rate of patients who had the an autism screen was completed in the last 6 months.



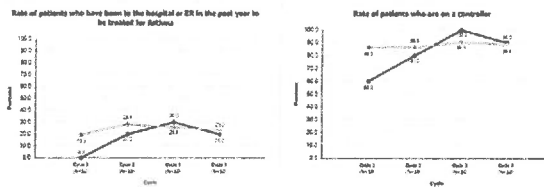
### 2 year olds: family strength identification, ROR



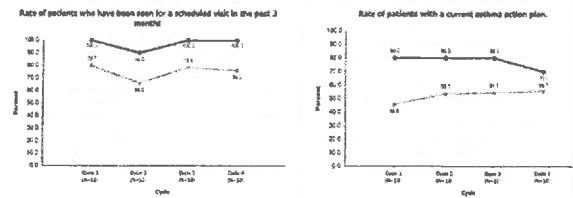
### 2 year olds: Family concerns and fluoride



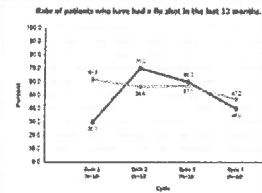
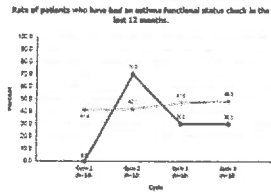
### Asthmatics: ER, Hospitalization and Controllers



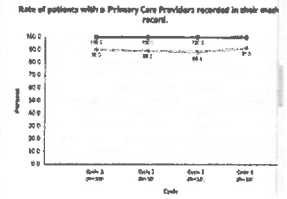
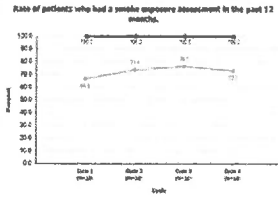
### Asthmatics: f/u visits and asthma action plans



Asthmatics: functional status checked, flu shot

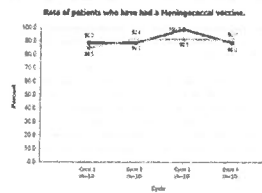
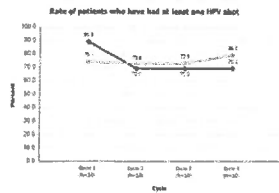


Asthmatics: Smoke exposure, primary care dr. recorded

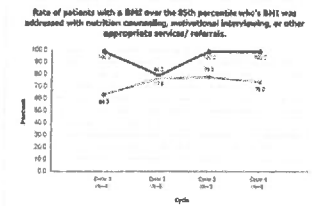
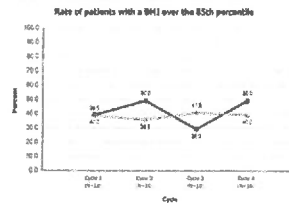


Teenagers: HPV vs. Meningococcal

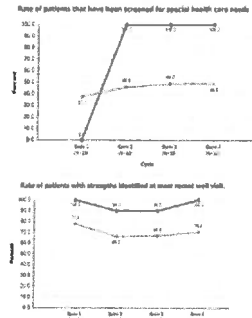
HPV: 11-12-13-16-18-31-33-35-39-45  
Meningococcal



Teenagers: Obesity



Teenagers:  
Special Health  
Care Needs and  
Strengths



Where was QTIP successful last 6 months?

In aggregate

- ROR- literacy promotion
- Fluoride varnish administration
- Asthma management (others also working on asthma)
  - Asthma Action Plans
  - Aggressive follow up
  - Monitoring functional control
  - Assessing smoke exposure
- HPV (building on previous success)
- Attention to obesity
- Behavioral health (Kristine to address)
- Screening for Special Health Care Needs

In selected practices

- Breast feeding
- Developmental screens
- Post Partum Depression Screens
- Identifying family and patient strengths



Fall 2017 and 2018?

- Tobacco
- Breast Feeding vs. 3-6 year olds
- Oral Health (especially fluoride varnish)
- CSHCN (NCQA PCMH)
  - Psychosocial aspects
  - Social Environmental aspects
  - Care barriers
  - Portable care plans
  - Sickle Cell
  - Asthma



Special thanks!!!!!!!!!!!!

- To all of our practice data coordinators that made this evaluation possible. You are my heroes
- Oversight Committee: Kevin Wessinger, Debbie Greenhouse, Sheila Woods, Martha Edwards, Ramkumar Jayagopalan, Greg Barabell, Jill Aiken