



New QIDA Review and What Counts As A Yes?

Ramkumar Jayagopalan, MD FAAP and Marlo Thomas-Koger, MPH
Quality through Technology and Innovation in Pediatrics
August 10, 2024

QIDA Guidelines

- ❑ Monthly data is due on the 15th of each month.
- ❑ Pull charts as you come to them that fit the age criteria.
- ❑ This means you will also have a random sample of **both** well and sick visits for chart audits.

Other helpful tips...

- Do 1st QIDA pull together as a team.
 - Determine where information can be found in EMR.



2024 – 2025 New Focus Areas

**1st 36 Months of Life
Data Collection Tool
0 – 36 months
Ten (10) questions**



**Asthma Data Collection Tool
All Ages (asthma diagnosis)
Twelve (12) questions**



What Counts As A Yes?

2024 – 2025

QIDA Questions

1st 36 months of life



Please identify the age of the patient:

- 0 - 12 months old
- 13 - 36 months old

1st 36 months of life

1. Is the patient up to date on Well child visits?

- a. Yes
- b. No
- **What counts as a yes: (0 – 12 months)**
Documentation patient is on track to complete six visits by 15 months of age.
- **What counts as a yes: (13 – 36 months)**
Documentation patient is up to date on Well child visits (on pace to complete 6 visits by 15 months plus 2 more visits by 30 months).

2. Is the patient up to date on immunizations?

- a. Yes
- b. No
- **What counts as a yes:** On pace to finish COMBO 10 i.e four diphtheria, tetanus and acellular pertussis (DTaP); three polio (IPV); one measles, mumps and rubella (MMR); three haemophilus influenza type B (HiB); three hepatitis B (HepB), one chicken pox (VZV); four pneumococcal conjugate (PCV); one hepatitis A (HepA); two or three rotavirus (RV); and two influenza (flu) vaccines by their second birthday).



1st 36 months of life

3. Is there documentation in the medical record of a standardized screen for development?

- a. Yes
- b. No
- c. N/A

What counts as a yes: Any documentation in the medical records that a standardized developmental screening has been performed.



1st 36 months of life



8. Is there documentation in the medical record that the family reads stories, sings songs, or were given a Reach Out and Read Book at the last well child visit?
- Yes
 - No
 - **What counts as a yes: (0 – 12)** Documentation in the chart that a Reach Out and Read Book was given or documentation of other literacy efforts in the chart.

1st 36 months of life

8. Is there documentation that the family was given a Reach Out and Read book or similar literacy effort?
- a. Yes
 - b. No

What counts as a yes: (13 – 36) Any indication that the patient was given a Reach Out and Read book or a similar literacy effort.

1st 36 months of life

10. Is there documentation in the medical record of a standardized screening for SDOH?

- a. Yes
- b. No
- c. N/A

What counts as a yes: Any indication that the family was screened with a validated instrument or homegrown question panel, presented either verbally, on paper, or via tablet, assessing at least one social determinant of health. Use of a full, validated screener like the SEEK, WeCare, etc. are always acceptable, screening tools like the SWYC that include social determinant questions are also acceptable.

Infants / 0 – 12 months

4. Is there documentation in the medical record that the infant was ever breastfed?
 - a. Yes
 - b. No

What counts as a yes: Documentation in the chart that the infant was ever breastfed.

Breastfeeding – Ideas for QI Implementation



- Provide breastfeeding education and support to patients.
- Implement breastfeeding support policies and practices in the office.
- Track patients who are supported.

Infants / 0 – 12 months

5. Is there documentation in the medical record that safe sleep was discussed?
- a. Yes
 - b. No

What counts as a yes: Documentation in the chart that safe sleep was discussed using AAP's newest safe sleep guidelines.

6. Is there documentation in the medical record that the mother was screened for postpartum depression?
- a. Yes
 - b. No

What counts as a yes: Evidence in the medical record that shows the mother was screened for maternal depression. Examples of validated screens that can be used include but are not limited to, Edinburgh, PHQ9, SWYC.

Safe Sleep - Ideas for QI Implementation



- Place a safe sleep crib in the lobby.
- Create a safe sleep bulletin board.
- Offer and track the distribution of the Charlie's Kid or other safe sleep book to newborns.

Infants / 0 – 12 months

7. Is there documentation in the medical record that there was a hearing screen?
 - a. Yes
 - b. No

What counts as a yes: Documentation in the medical record that the infant's hearing was screened.

Infants / 0 – 12 months

9. Is there documentation in the medical record that the patient was screened for tobacco exposure including cigarettes, e-cigarettes, and other tobacco products?
- a. Yes
 - b. No

What counts as a yes: Documentation in the record since birth that family was asked about secondhand smoke exposure and use of vaporizers and e-cigarettes.

Documentation of a SEEK screen or other environmental screen that identifies smoke exposure will count for this measure.

SC Quitline - Ideas for QI Implementation



- Offer information about the SC Quitline or other smoking cessation program.
- Track information provided to patient families.
- Follow-up with patient/family to see if there was a change in use.



Toddlers / 13 – 36 months

3. Is there documentation in the medical record of a standardized screen for development?
- a. Yes
 - b. No

What counts as a yes: Any documentation in the medical records that a standardized developmental screening has been performed.

4. Is there a standardized screen for autism in the medical record?
- a. Yes
 - b. No
 - c. Not appropriate

What counts as a yes: Documentation in the records that a standardized autism screening (MCHAT, SWYC or other screen at the practice's discretion) has been completed.

Toddlers / 13 – 36 months

5. Is there documentation in the medical record that there was a photometric vision screen?
- a. Yes
 - b. No

What counts as a yes: Any documentation in the chart that a photometric vision screen was done in the last 12 months.

6. Is there documentation in the medical record indicating that fluoride varnish was provided at least once during the past 12 months?
- a. Yes
 - b. No

What counts as a yes: Documentation that the patient received at least one fluoride varnish application in the pediatrics office in the past 12 months.

Toddlers / 13 – 36 months

7. Is there documentation in the medical record that there was a lead test done in the past 12 months?
- a. Yes
 - b. No

What counts as a yes: Documentation in the medical record that a lead test was performed within the last 12 months.

Toddlers / 13 – 36 months

9. Is there documentation in the medical record indicating that family strengths were identified at the most recent health supervision visit?
- a. Yes
 - b. No

What counts as a yes: A check box that family strengths were discussed, or even better specific family strengths identified at the most recent health supervision visit using free text.

Identification of family strengths can be done in many ways. Here are some ideas to help you successfully search for and identify family strengths.

Asthma (all ages)

- We will now discuss What Counts As A Yes for the Asthma questions.
- Remember to select charts based upon patients who have an asthma diagnosis.

Asthma – All Ages (0 months – 21 years of age)

1. Did the patient have a well child visit in the past 12 months?

a. Yes

b. No

What counts as a yes: Documentation that the patient was seen for a well check in the past 12 months (could be the visit the chart was pulled).

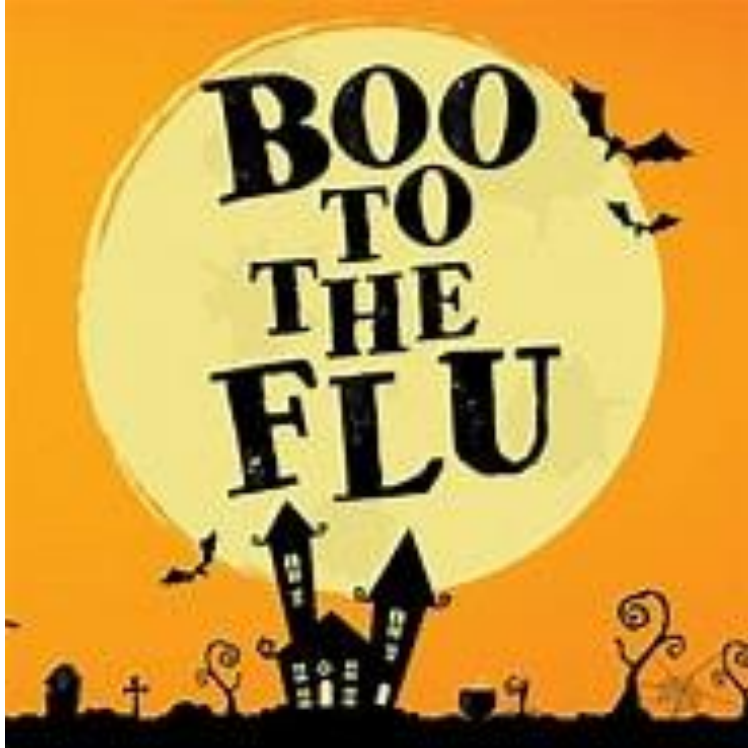
2. Is there documentation in the medical record that the patient is up to date on the flu vaccine?

a. Yes

b. No

What counts as a yes: Documentation in the record that a flu shot was given in the past 12 months.

Vaccinations - Ideas for QI Implementation



- Offer a flu clinic
- Turn every visit into a vaccine visit in your practice
- Have a fall health fair focusing on vaccines

Asthma – All Ages

3. Was the patient screened for tobacco exposure including cigarettes, e-cigarettes, and other tobacco products?
 - a. Yes
 - b. No

What counts as a yes: Any evidence of tobacco use screening for both the family and the patient if appropriate. This question should be asked in such a way that any tobacco exposure is recorded, including use of vaporizers and e-cigarettes.

Asthma – All Ages

- 4. Is the BMI greater than 85th percentile?
 - a. Yes
 - i. If YES, was there documentation of healthy lifestyle discussion?
 - a. Yes
 - b. No

What counts as a yes: Is there documentation in the chart if the BMI was over the 85th percentile that the issue was addressed in the visit by nutrition counseling, motivational interviewing, or other appropriate services.

- b. No

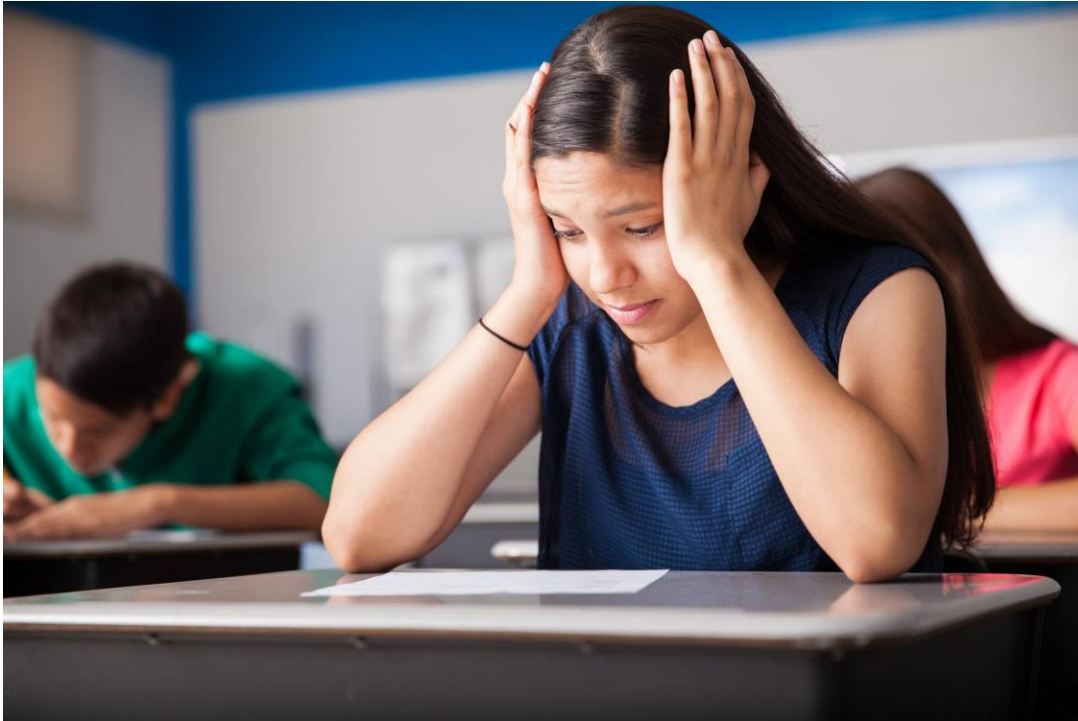
What counts as a yes: Was the last BMI recorded in the chart above the 85th percentile? If there is no BMI recorded in the chart, the answer will be no.

Asthma – All Ages

5. Is there documentation that the patient was screened for anxiety within the past 12 months?
- a. Yes
 - b. No
 - c. Not appropriate

What counts as a yes: Documentation of a standardized screening tool used, for example: GAD-7, SCARED etc.

Anxiety Screening - Ideas for QI Implementation



- Standardize anxiety screening
- Ensure patients are aware of available resources
- Educate staff on comfortability of addressing anxiety



Asthma – All Ages

6. Is there documentation in the medical record that the patient has been seen for a scheduled asthma visit in the past 6 months?
 - a. Yes
 - b. No

What counts as a yes: Documentation in the medical record that the patient had and attended a prescheduled asthma visit in the past 6 months.

Asthma – All Ages

7. Is the patient prescribed an appropriate medication based on the level of severity?
- a. Yes
 - b. No

What counts as a yes: Documentation of a rescue inhaler (Albuterol) for Intermittent Asthma and any persistent asthmatic should be on a controller medication (usually a steroid inhaler or a combination steroid inhaler)

Classifying Asthma severity helps in treatment and follow ups. The levels of severity are Intermittent (J4.20/21), Mild Persistent (J45.30/31), Moderate Persistent (J45.40/41) and Severe Persistent (J45.50/51).

Asthma – All Ages (0 months – 21 years of age)

- 8. Does the patient meet the criteria for SMART therapy?
 - a. Yes
 - i. If YES, is the patient on SMART therapy?
 - a. Yes
 - b. No

What counts as a yes: The patient in on a combination inhaler (ICS plus LABA) for maintenance and flare up of asthma symptoms.

- b. No

Asthma – All Ages (0 months – 21 years of age)

9. Is there documentation in the medical record indicating that functional status was checked in the past 12 months?

- a. Yes
- b. No
- c. Not appropriate

What counts as a yes: Documentation of a functional assessment done (ACT, Spirometry or Peak flow) at least once in the past year.

10. Is there documentation in the medical record that an asthma action plan was given to the family in the past 12 months?

- a. Yes
- b. No

What counts as a yes: Documentation that an up-to-date asthma action plan was given to share with other caregivers as needed in the past 12 months.

Asthma- Ideas for QI Implementation



- Increase e-prescribing
- Ensure patients have an asthma action plan
- Create or modify pediatric severe asthma algorithm
- Educate families on what makes asthma worse
- Educate parents on communicating with school
- Educate staff on AAP 2024 asthma guidelines

Asthma – All Ages (0 months – 21 years of age)

11. Is there documentation that the patient had been to the ER for asthma in the past 12 months?

- a. Yes
- b. No

What counts as a yes: Documentation in the record that the patient went to the ED for an asthma related issue either through patient reporting or through an ER report.

12. Was the patient seen as an ER follow up in the PCP office?

- a. Yes
- b. No

What counts as a yes: Documentation the patient was seen @ PCP office for follow up after ER visit (Ideally should be within 1-2 weeks after ER visit).

Questions?

Thank you

Medical Director:

Ramkumar Jayagopalan, MD

ramkumarjayagopalan@gmail.com

Quality Improvement Senior Consultant:

Marlo Koger, MPH

marlo.thomas-koger@scdhhs.gov



