

The QTIP Journey: Growing with Purpose – *Elevating Care, Empowering Teams*

Shiann Bradley, MSHS

Quality through Technology and Innovation in Pediatrics (QTIP)

Bureau of Quality

South Carolina Department of Health and Human Services (SCDHHS)

Aug. 9, 2025

Agenda

- Welcome
- 2024-2025 in Review
- Spring 2025
- SCDHHS Updates
- QTIP 2025-2026
- Participation Agreement
- Weekend Overview

The QTIP Journey

THE QTIP Journey



Growing with Purpose

Elevating Care, Empowering Teams



Rooted in reflection. Ready for what's next.



QTIP Overview 2024-2025

| Program Year | Topic | Subtopics and Focus | Workshop Focus |
|--------------|---------------------------------|--|---|
| 2024–2025 | Topic 1: Newborns (0–36 months) | <ul style="list-style-type: none">• Screenings: hearing, developmental, autism, lead, photometric, oral• Immunizations• WCC completions• Mother/child dyad: breastfeeding, safe sleep, relational health (mental health), social determinants of health (SDOH), postpartum depression | Fall: 4th Trimester Care (postpartum depression, physical warning signs, SDOH, safe sleep, breastfeeding) |
| | Topic 2: Asthma | <ul style="list-style-type: none">• Asthma clinical guidelines• Medication management• Obesity and healthy lifestyle• Smoking cessation• Emergency room (ER) utilization• Immunizations• Asthma visits• WCC completions | Spring: Asthma Exacerbation |



Let's Take a Look Back

A Look Back on Spring 2025

Accomplishments

- Site visits
 - 25 in-person visits
 - 4 virtual
- Workshops completed
 - Be SMART About Asthma
 - 11 practices completed

What's new?

- QTIP Booking page
- Monthly Quality Improvement Data Aggregator (QIDA) updates in newsletter
- Streamlined workshop process

iSpy: QTIP In Action



Site visit
participation



Sharing chart
audits



Reaching out to
mental health



Data-driven
decision making

Q.T.I.P. AWARD



This Summer 2025 award is presented to:

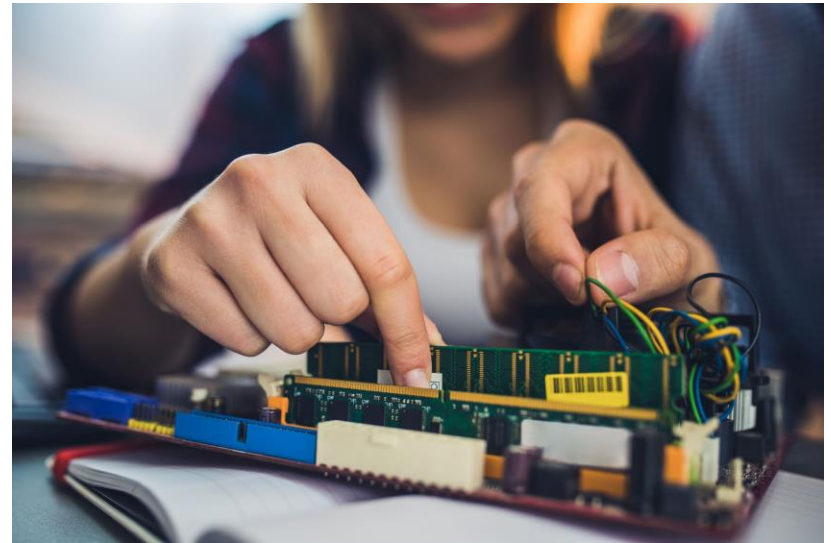
**Georgetown
Pediatric Center**

For using QI tools and skills to achieve their practice implementations

Growing with Purpose

SCDHHS Updates

- New director
 - Eunice Medina
- New assistant bureau chief of quality
 - Eileen Beasley
- Managed care organization (MCO) recertification process
- Autism policy updates
- BabyNet fast track
- QTIP is **FULLY** staffed!



QTIP Staff

Dr.
Ramkumar
Jayagopalan
**Medical
Director**



Shiann
Bradley,
MSHS
**Project
Director**



Kelli Scurry,
LISW-CP
**Mental Health
Integration
Specialist**



Addison
(Addy) Lee
**Quality
Improvement
Specialist**



2025-2026 Focus Area

| Program Year | Topic | Subtopics and Focus | Workshop Focus |
|--------------|--|--|--------------------------|
| 2025–2026 | Topic 1: Developmental Screening / Autism (Ages 0–3) | <ul style="list-style-type: none"> • Immunizations • WCC completions • Screenings: developmental (type, referral), autism (screener used, referral) • Mother/child dyad: breastfeeding, safe sleep, SDOH, postpartum depression | Fall: Autism and BabyNet |
| | Topic 2: Adolescent Health & Risk Screening (Ages 11+) | <ul style="list-style-type: none"> • Screenings: STI, mental health (anxiety, depression, suicide), substance use (screener used, in-office vs referral) • Transition to primary care • Immunizations: Combo 2 • WCC completions | Spring: TBD |

What's new this year?

Regional site visits

Medicaid population update

Blog updates

QIDA formatting

Participation agreement in action

Report cards

Elevating Care, Empowering Teams

Participation Agreement in Action

| Criteria/Activity | Opportunities to Meet/Participate | Requirement |
|-----------------------------------|-----------------------------------|---|
| Learning collaborative attendance | Bi-annually | Three practice members attend |
| QIDA data entry | Monthly | Entered by the end of the month (due on the 15 th) |
| Workshop participation | Bi-annually | One every 24 months |
| Quality improvement | Bi-annually | Activities discussed during site visit (PDSA forms, chart audits, planning, meeting note, etc.) |
| Monthly calls | Monthly | Attend four calls |
| Site visits | Bi-annually | Full practice QTIP team attendance; participate with more practice employees/sites |
| Mental health summer survey | Annually | By deadline; before Learning Collaborative |



Participation Agreement in Action *(cont.)*

| Criteria/Activity | Opportunities to Meet/Participate | Requirement |
|-----------------------------------|-----------------------------------|---|
| Learning collaborative attendance | Bi-annually | Three practice members attend |
| QIDA data entry | Monthly | Entered by the end of the month (due on the 15 th) |
| Workshop participation | Bi-annually | One every 24 months |
| Quality improvement | Bi-annually | Activities discussed during site visit (PDSA forms, chart audits, planning, meeting note, etc.) |
| Monthly calls | Monthly | Attend four calls |
| Site visits | Bi-annually | Full practice QTIP team attendance; participate with more practice employees/sites |
| Mental health summer survey | Annually | By deadline; before Learning Collaborative |



QIDA FYIs



Cycle 1 is due Aug. 31.



Review the questions as a team.



If you cannot pull requested charts, let us know ASAP so we can work together to find the best course of action.

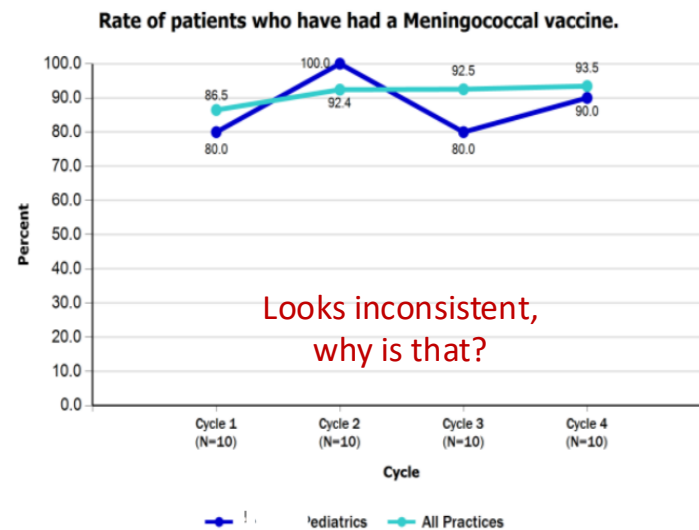
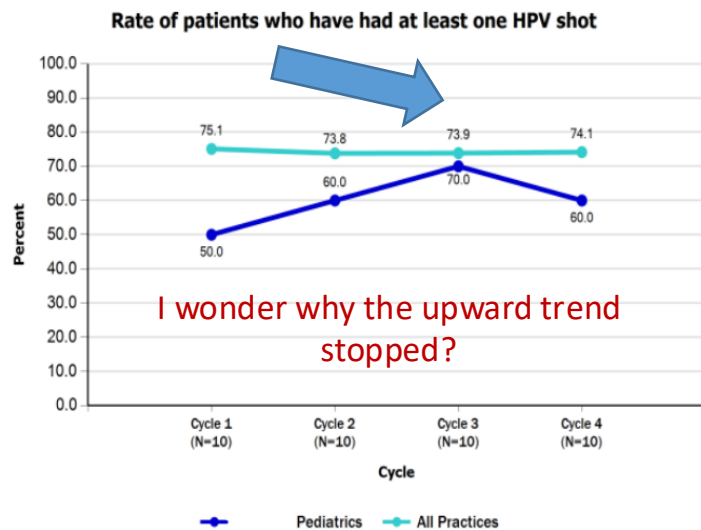


QIDA excel sheet will be sent via email with copy of questions on Monday, Aug. 11.



Using QIDA to develop a QIproject

- QIDA can show you where you have the most room for the most improvement, where you could benefit to take a deeper dive and initiate a QI project.
- QIDA isn't a competition or an exam, it is a tool to let you see where you can make big strides.



Participation Agreement in Action *(cont.)*

| Criteria/Activity | Opportunities to Meet/Participate | Requirement |
|-----------------------------------|-----------------------------------|---|
| Learning collaborative attendance | Bi-annually | Three practice members attend |
| QIDA data entry | Monthly | Entered by the end of the month (due on the 15 th) |
| Workshop participation | Bi-annually | One every 24 months |
| Quality improvement | Bi-annually | Activities discussed during site visit (PDSA forms, chart audits, planning, meeting note, etc.) |
| Monthly calls | Monthly | Attend four calls |
| Site visits | Bi-annually | Full practice QTIP team attendance; participate with more practice employees/sites |
| Mental health summer survey | Annually | By deadline; before Learning Collaborative |



Fall 2025 Workshop

The Referral Roadmap: *From Assessment to Action*

- **Workshop Goal:** Support QTIP practices in improving their developmental referral processes by incorporating the updated BabyNet Fast Track process and aligning workflows to incorporate RITA-T testing into existing workflows.
- **Kick Off Call :** Wednesday, Sept. 10 at 7:30 a.m. and 12:30 p.m.



Participation Agreement in Action *(cont.)*

| Criteria/Activity | Opportunities to Meet/Participate | Requirement |
|-----------------------------------|-----------------------------------|---|
| Learning collaborative attendance | Bi-annually | Three practice members attend |
| QIDA data entry | Monthly | Entered by the end of the month (due on the 15 th) |
| Workshop participation | Bi-annually | One every 24 months |
| Quality improvement | Bi-annually | Activities discussed during site visit (PDSA forms, chart audits, planning, meeting note, etc.) |
| Monthly calls | Monthly | Attend four calls |
| Site visits | Bi-annually | Full practice QTIP team attendance; participate with more practice employees/sites |
| Mental health summer survey | Annually | By deadline; before Learning Collaborative |



Quality Improvement in Action

From QTIP

- **Friday Power Hours**
 - QIDA question and answer
 - Network with fellow practices
 - Learn practical QI skills
 - **OPEN TO ALL!**
- **QIDA run charts**
 - Bi-monthly from QI specialist



In YOUR Office

- Huddles
- Staff meetings
- Posting QI data
- Sharing monthly calls
- Sharing monthly newsletter
- Plan-Do-Study-Act (PDSA) forms



Participation Agreement in Action *(cont.)*

| Criteria/Activity | Opportunities to Meet/Participate | Requirement |
|-----------------------------------|-----------------------------------|---|
| Learning collaborative attendance | Bi-annually | Three practice members attend |
| QIDA data entry | Monthly | Entered by the end of the month (due on the 15 th) |
| Workshop participation | Bi-annually | One every 24 months |
| Quality improvement | Bi-annually | Activities discussed during site visit (PDSA forms, chart audits, planning, meeting note, etc.) |
| Monthly calls | Monthly | Attend four calls |
| Site visits | Bi-annually | Full practice QTIP team attendance; participate with more practice employees/sites |
| Mental health summer survey | Annually | By deadline; before Learning Collaborative |



QTIP Wednesday Monthly Calls

Aug. 13
12:30 – 1:30 p.m.

Special Education Evaluations – Peter Keup / Lisa McCliment,
South Carolina Department of Education

Sept. 10
12:30 – 1:30 p.m.

Developmental Workshop Kickoff – BabyNet team and Dr.
Shawna McCafferty

Oct. 8
12:30 – 1:30 p.m.

Human Trafficking Recognition & Response – Erin Hart, DNP,
FNP-BC

Nov. 12
12:30 – 1:30 p.m.

Support for Kinship Caregivers - KinCarolina

Dec. 6
12:30 – 1:30 p.m.

Learning Disabilities & IEP - William Mark Posey, PhD

Jan. 14
12:30 – 1:30 p.m.

Looking Back and Looking Ahead – Your QTIP semester in
review

Participation Agreement in Action *(cont.)*

| Criteria/Activity | Opportunities to Meet/Participate | Requirement |
|-----------------------------------|-----------------------------------|---|
| Learning collaborative attendance | Bi-annually | Three practice members attend |
| QIDA data entry | Monthly | Entered by the end of the month (due on the 15 th) |
| Workshop participation | Bi-annually | One every 24 months |
| Quality improvement | Bi-annually | Activities discussed during site visit (PDSA forms, chart audits, planning, meeting note, etc.) |
| Monthly calls | Monthly | Attend four calls |
| Site visits | Bi-annually | Full practice QTIP team attendance; participate with more practice employees/sites |
| Mental health summer survey | Annually | By deadline; before Learning Collaborative |



Learning, Laughing, Leading Together

Regional Site Visits

- Collaborative, in-person sessions designed to:
 - Reinforce key learning collaborative content
 - Share and discuss practice progress since LC
 - Offer a space to share QI progress and lessons learned
 - Provide tailored QI coaching and data review
 - Address mental health workflows and support needs



Learning, Laughing, Leading Together *(cont.)*

Fall 2025 Schedule



Participation Agreement in Action *(cont.)*

| Criteria/Activity | Opportunities to Meet/Participate | Requirement |
|-----------------------------------|-----------------------------------|---|
| Learning collaborative attendance | Bi-annually | Three practice members attend |
| QIDA data entry | Monthly | Entered by the end of the month (due on the 15 th) |
| Workshop participation | Bi-annually | One every 24 months |
| Quality improvement | Bi-annually | Activities discussed during site visit (PDSA forms, chart audits, planning, meeting note, etc.) |
| Monthly calls | Monthly | Attend four calls |
| Site visits | Bi-annually | Full practice QTIP team attendance; participate with more practice employees/sites |
| Mental health summer survey | Annually | By deadline; before Learning Collaborative |



Mental Health for the Fall



STABILIZATION COMPONENT 3

Affect Modulation & Regulation

It's normal to experience uncomfortable emotions (sadness, fear, anger, nervousness). But **if a patient lacks basic skills to identify and manage difficult emotions, negative coping behaviors develop instead.**



SCAN HERE TO
REQUEST MEETING
LINKS

All trainings are on Tuesdays!

7:30AM

12:30PM

8/26

9/23

9/2

9/30

9/16

6PM

10/7

10/7

This training gives you **5-minute CBT-based tools** to use during patient **appointments** and homework assignments for patients to complete independently or with a caregiver. Your **patients will learn how to identify tough emotions, express them, and use cognitive tools to regulate them.**



This Weekend and Beyond

Why This Weekend Matters



It is an opportunity to pause, reflect and realign.



We're introducing **tiers**, not to divide but to **support teams where you are.**



“This is a time to take stock of what works, learn from each other and get re-energized for the year ahead.”



A Great Big Thank You to Our Sponsors



www.allfreethankyounotes.com



A Great Big Thank You to Our Sponsors *(cont.)*



www.allfreethankyounotes.com



Door prizes
“4th Trimester” workshop
sponsor

A Great Big Thank You to Our Sponsors *(cont.)*



www.allfreethankyounotes.com



“BE SMART About Asthma”
workshop sponsor

A Great Big Thank You to Our Sponsors *(cont.)*



www.allfreethankyounotes.com



Humana
Healthy Horizons®
in South Carolina



Q.T.I.P. AWARD



This Summer 2025 award is presented to:

AnMed Pediatrics

For using QI tools and skills to achieve their practice implementations

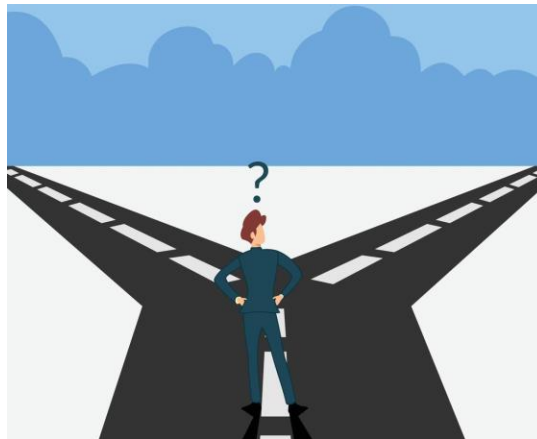
Saturday Morning Breakouts

- **Track A:** *Quality Improvement Strategies*

- Session 1: Digging into the Data
- Session 2: Process Makes Perfect!

- **Track B:** *Mental Health Integration*

- Session 1: Stabilization Component Two - Relaxation in Review
- Session 2: Stabilization Component Three - Affect Expression and Regulation



Breakout Logistics

Breakout Discussions *(Please choose one room per time slot)* Divide and Conquer

| Time | Room | Title | Moderator |
|--------------------------------|---------------|--|-------------------------------------|
| Session 1: 9:40 to 10:15 a.m. | Eisenhower FG | Stabilization Component 2 – Relaxation in Review | Kelli Scurry, LISW-CP |
| | Coolidge DE | Digging into the Data | Shiann Bradley, MSHS Addison Lee |
| 10:15 to 10:25 a.m. | Break | | |
| Session 2: 10:25 to 11:30 a.m. | Eisenhower FG | Stabilization Component 3 – Affect Expression and Regulation | Kelli Scurry, LISW-CP |
| | Coolidge DE | Process Makes Perfect! | Shiann Bradley, MSHS Addison Lee |

Bingo

- Mingle with your fellow attendees and find practices/individuals who fit each category.
- Write the attendee's name or practice on the corresponding category.
- You **cannot** use the same attendee for multiple categories.
- The first person to complete their entire sheet will earn a door prize.



